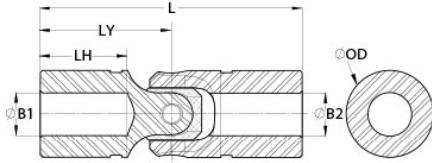




## US16-7-6-SS

Ruland US16-7-6-SS, 7/16" x 3/8" Single Universal Joint, Friction Bearing, Stainless Steel, 0.995" OD, 3.380" Length



### Description

Ruland US16-7-6-SS is a single cardan friction bearing universal joint with 0.4375" x 0.3750" bores, 0.995" OD, and 3.380" length. It is ideal for applications with space constraints and has higher torque capacity than equivalently sized double universal joints. This plain bearing universal joint is comprised of pins and blocks that are precision machined, selectively heat treated, and ground for high strength, accuracy, and wear resistance. The combination of these components with precision ground and hardened yoke ears allow for a longer lifespan, increased performance in demanding applications, and greater angular misalignment of up to 45° when compared to commodity style single universal joints. US16-7-6-SS is made from high grade stainless steel for increased corrosion resistance. It can be combined with boot UBOOT16/25-NI-KIT to protect the joint from unwanted contaminants such as dust or water and self lubricate reducing maintenance time. This single cardan universal joint is manufactured in the USA by Belden Universal for strict control of processes.

### Product Specifications

<b>Bore (B1)</b>	0.4375 in	<b>Small Bore (B2)</b>	0.3750 in
<b>B1 Max Shaft Penetration</b>	1.190 in	<b>B2 Max Shaft Penetration</b>	1.190 in
<b>Joint Outer Diameter (OD)</b>	0.995 in	<b>Bore Tolerance</b>	+0.0010 in / -0.0000 in
<b>Length (L)</b>	3.380 in	<b>Yoke Length (LY)</b>	1.688 in
<b>Hub Depth (LH)</b>	1.190 in	<b>Peak Torque</b>	1,575 in-lb
<b>Rated Torque</b>	315 in-lb	<b>Max Operating Angle</b>	45°
<b>Material Specification</b>	Yokes: 303 Stainless Steel Pins and Blocks: 416 Stainless Steel	<b>Manufacturer</b>	Belden Universal
<b>Country of Origin</b>	USA	<b>Recommended Lubricant</b>	LUBRIPLATE No. 1200-2
<b>Matching Boot Cover</b>	<a href="#">UBOOT16/25-NI-KIT</a>	<b>UPC</b>	63452933020
<b>Tariff Code</b>	8483.60.4000	<b>UNSPC</b>	25173810
<b>Note 1</b>	Performance ratings are for guidance only. The user must determine suitability for a particular application.		
<b>Prop 65</b>	⚠ <b>WARNING</b> This product can expose you to the chemical Nickel (metallic), known to the State of California to cause cancer. For more information go to <a href="http://www.P65Warnings.ca.gov">www.P65Warnings.ca.gov</a> .		