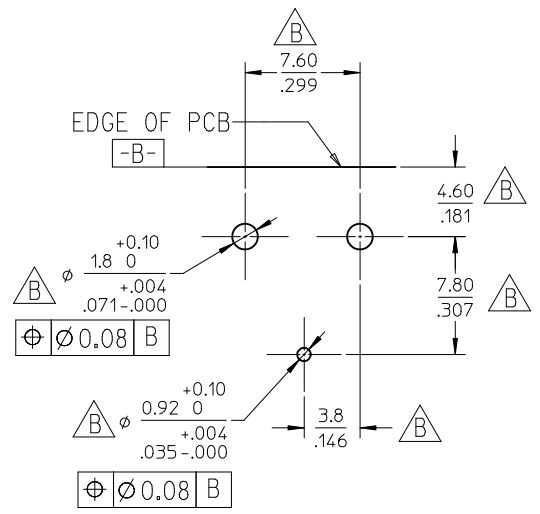
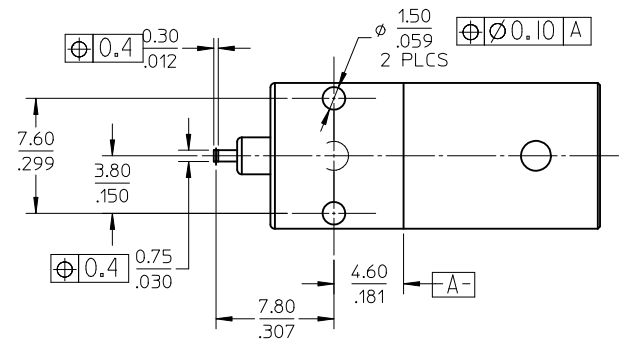
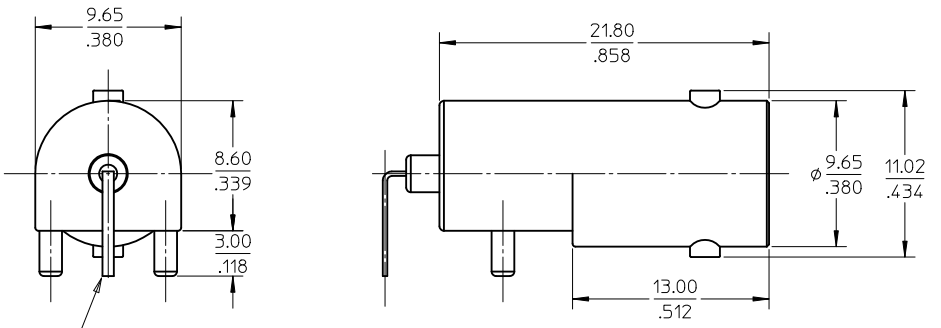


MATERIALES AND FINISHES

BODY ZINC ALLOY  
 PLATED TIN  
 CENTER CONTACT PHOSPHOR BRONZE  
 PLATED GOLD / TIN  
 INSULATOR POLYPROPYLENE



THIS LEAD IS FORMED TO FIT  
 RECOMMENDED PCB PATTERN  
 DURING INSTALLATION



BOTTOM VIEW  $\triangle B$

73171-4230	ONE PER BAG
73100-0154	TRAY
PART NO.	PACKAGING


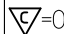

PS-89675-1030	PRODUCT SPECIFICATIONS
SPECIFICATION	DESCRIPTION

CHG: ADD -4230 EC NO: URF2011-0634 DRWN: JWIENER 2011/04/27 CHKD: SSS 2011/04/27 APPR: JWIENER 2011/05/02	QUALITY SYMBOLS $\nabla = 0$ $\triangle C = 0$	GENERAL TOLERANCES (UNLESS SPECIFIED) mm INCH 4 PLACES $\pm$ --- $\pm$ --- 3 PLACES $\pm$ --- $\pm$ --- 2 PLACES $\pm 0.25$ $\pm$ --- 1 PLACE $\pm 0.25$ $\pm$ --- ANGULAR $\pm$ ---°	DIMENSION STYLE MM/IN DRAWN BY IRIS WANG CHECKED BY A CHANG APPROVED BY A CHANG MATERIAL NO. SEE TABLE	SCALE DESIGN UNITS METRIC THIRD ANGLE PROJECTION	TITLE BNC JACK R/A PCB 50 OHM BNC-JPCB MOLEX INCORPORATED DOCUMENT NO. SD-73100-0154 SHEET NO. 1 OF 1
	DRAFT WHERE APPLICABLE MUST REMAIN WITHIN DIMENSIONS	SIZE A3 THIS DRAWING CONTAINS INFORMATION THAT IS PROPRIETARY TO MOLEX INCORPORATED AND SHOULD NOT BE USED WITHOUT WRITTEN PERMISSION			

MATERIALS AND FINISHES

SEE SD-73100-0154

P/N: 73171-4230: THIS IS P/N: 73100-0154 PLACED IN A SINGLE BAG

CHG: NEW RELEASE EC NO: URF2011-0634 DRWN: JWIENER 2011/04/29 CHKD: SSS 2011/04/29 APPR: JWIENER 2011/05/02	QUALITY SYMBOLS  = 0  = 0	GENERAL TOLERANCES (UNLESS SPECIFIED)		DIMENSION STYLE MM/IN		SCALE	DESIGN UNITS METRIC	THIRD ANGLE PROJECTION																													
		<table border="1"> <thead> <tr> <th></th> <th>mm</th> <th>INCH</th> </tr> </thead> <tbody> <tr> <td>4 PLACES</td> <td>± ---</td> <td>± ---</td> </tr> <tr> <td>3 PLACES</td> <td>± ---</td> <td>± ---</td> </tr> <tr> <td>2 PLACES</td> <td>± ---</td> <td>± ---</td> </tr> <tr> <td>1 PLACE</td> <td>± ---</td> <td>± ---</td> </tr> <tr> <td colspan="3">ANGULAR ± ---°</td> </tr> </tbody> </table>		mm	INCH	4 PLACES	± ---	± ---	3 PLACES	± ---	± ---	2 PLACES	± ---	± ---	1 PLACE	± ---	± ---	ANGULAR ± ---°			<table border="1"> <thead> <tr> <th>DRAWN BY</th> <th>DATE</th> </tr> </thead> <tbody> <tr> <td>JWIENER</td> <td>2011/04/29</td> </tr> <tr> <th>CHECKED BY</th> <th>DATE</th> </tr> <tr> <td>SSS</td> <td>2011/04/29</td> </tr> <tr> <th>APPROVED BY</th> <th>DATE</th> </tr> <tr> <td>JWIENER</td> <td>2011/05/02</td> </tr> </tbody> </table>	DRAWN BY	DATE	JWIENER	2011/04/29	CHECKED BY	DATE	SSS	2011/04/29	APPROVED BY	DATE	JWIENER	2011/05/02	TITLE BNC JACK R/A PCB THRU-HOLE 50 OHMS BNC-JPCB EWR-N/A		 MOLEX INCORPORATED	
	mm	INCH																																			
4 PLACES	± ---	± ---																																			
3 PLACES	± ---	± ---																																			
2 PLACES	± ---	± ---																																			
1 PLACE	± ---	± ---																																			
ANGULAR ± ---°																																					
DRAWN BY	DATE																																				
JWIENER	2011/04/29																																				
CHECKED BY	DATE																																				
SSS	2011/04/29																																				
APPROVED BY	DATE																																				
JWIENER	2011/05/02																																				
A	REV	DRAFT WHERE APPLICABLE MUST REMAIN WITHIN DIMENSIONS		SIZE C	THIS DRAWING CONTAINS INFORMATION THAT IS PROPRIETARY TO MOLEX INCORPORATED AND SHOULD NOT BE USED WITHOUT WRITTEN PERMISSION																																