

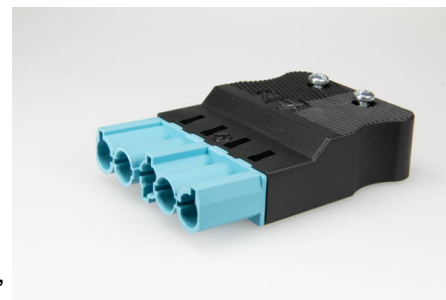


Building Installation Connector System AC 166®

G

Plug and Socket Connectors Flat Version

AC 166 GSTF/515 PB ZEL SW



plug, connection type: screw, 5 pole, pastel blue black, coding: 2 (DALI), cable diameter min.: 9.3 mm, cable diameter max.: 10.3 mm, voltage rating: 400 V, current rating: 20 A, cross-section rating: 2.5 mm²

Order Info

reference number (ref.no.)	17995
PU	100
EAN	4028012110964

Type

type	plug
number of poles	5 pole
clamping units per pole	1
colour	pastel blue black
coding	2 (DALI)
cross-section rating	2.5 mm ²
connection type	screw
PE function	yes
protection against incorrect plugging	yes

Technical Data

voltage rating	400 V
current rating	20 A
impulse voltage rating	4.0 kV
insulating material	PA
contact material	brass
core cross-section min.	0.5 mm ²
core cross-section max.	4.0 mm ²
flammability rating	V-2
max. ambient temperature operation	70 °C
IP code	IP20
IP code when plugged	IP40
type of conductor solid	yes
type of conductor flexible	yes
type of conductor stranded	yes

stripping length	7.0 mm
dismantling length PE	39.0 mm
dismantling length	32.0 mm
assembly contact screw	0,5x3,0 / \cup 0,3 Nm
assembly strain relief	PZ 1 / \cup 0.5 Nm
cable diameter min.	9.3 mm
cable diameter max.	10.3 mm
strain relief	yes

Approvals

acc. to EN 61535	Download PDF
acc. to UL	Download PDF
acc. to CSA	Download PDF

Accessories

AC 166 VSF SW	169563
AC 166 VSF WS	169553