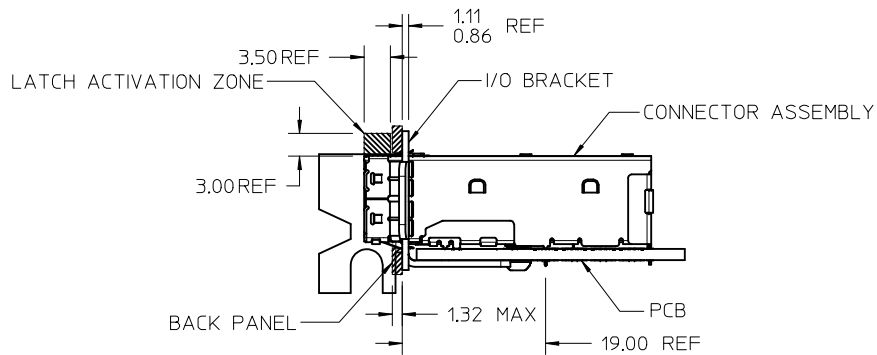


- NOTES:
- MATERIALS:
 - CONNECTOR HOUSING: HIGH TEMPERATURE THERMOPLASTIC GLASS FILLED, UL 94V-0
 - EMI CAGE: NICKEL SILVER ALLOY
 - EMI CAGE BASE: STAINLESS STEEL
 - EMI FINGERS: COPPER ALLOY
 - TERMINALS: COPPER ALLOY
 - FINISHES:
 - EMI FINGERS: 0.50µM MIN NICKEL
 - CONTACT AREA: 0.76µM MIN GOLD OVER 2.54µM MIN NICKEL
 - TAIL AREA: 0.76µM-1.52µM TIN OVER 2.54µM MIN NICKEL
 - PRODUCT SPECIFICATION: PS-76866-001
 - PACKAGING SPECIFICATION: PK-76866-001
 - MATES WITH: MOLEX CABLE SERIES 111068 & 111073
 - RECOMMENDED MOUNTING HARDWARE: REFER TO APPLICATION SPECIFICATION AS-76866-001
 - PLUG MODULE PCB LAYOUT REFER TO SD-76866-9900

MEXICO	DDDY
CHINA	MSHDDDY
MANUFACTURING LOCATION	DATE CODE

ADDED PF NUT CAGE EC NO: UCP2016-0275 DRWN:TMCCLELL 2016/01/19 CHKD:TMCCLELLAND 2016/07/06 APPR:SMILLER 2016/07/06	QUALITY SYMBOLS ∇=0 ∇=0 ∇=0	GENERAL TOLERANCES (UNLESS SPECIFIED)		DIMENSION STYLE MM ONLY		SCALE 2:1		DESIGN UNITS METRIC		THIRD ANGLE PROJECTION																					
		<table border="1"> <tr> <th></th> <th>mm</th> <th>INCH</th> </tr> <tr> <td>4 PLACES</td> <td>± ---</td> <td>± ---</td> </tr> <tr> <td>3 PLACES</td> <td>± ---</td> <td>± ---</td> </tr> <tr> <td>2 PLACES</td> <td>± 0.13</td> <td>± ---</td> </tr> <tr> <td>1 PLACE</td> <td>± 0.25</td> <td>± ---</td> </tr> <tr> <td>0 PLACE</td> <td>±</td> <td>±</td> </tr> </table>			mm	INCH	4 PLACES	± ---	± ---	3 PLACES	± ---	± ---	2 PLACES	± 0.13	± ---	1 PLACE	± 0.25	± ---	0 PLACE	±	±	DRAWN BY DATE KLANG 2009/03/4		CHECKED BY DATE TMCCLELLAND 2010/01/14		APPROVED BY DATE MBANAKIS 2010/01/14		TITLE IPASS PLUS HD 1X4 ASSY		DOCUMENT NO. SD-76866-003	
			mm	INCH																											
		4 PLACES	± ---	± ---																											
3 PLACES	± ---	± ---																													
2 PLACES	± 0.13	± ---																													
1 PLACE	± 0.25	± ---																													
0 PLACE	±	±																													
ANGULAR ±1/2°		MATERIAL NO. 76866-0013		SIZE C		THIS DRAWING CONTAINS INFORMATION THAT IS PROPRIETARY TO MOLEX INCORPORATED AND SHOULD NOT BE USED WITHOUT WRITTEN PERMISSION		SHEET NO. 1 OF 6		DRAFT WHERE APPLICABLE MUST REMAIN WITHIN DIMENSIONS																					
MOLEX																															

PCI ADD-IN CARD APPLICATION



ASSEMBLED VIEW

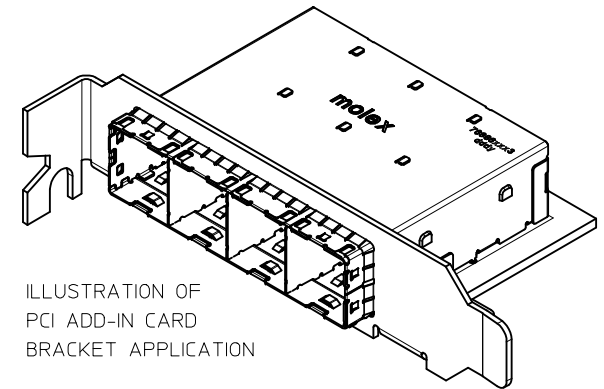
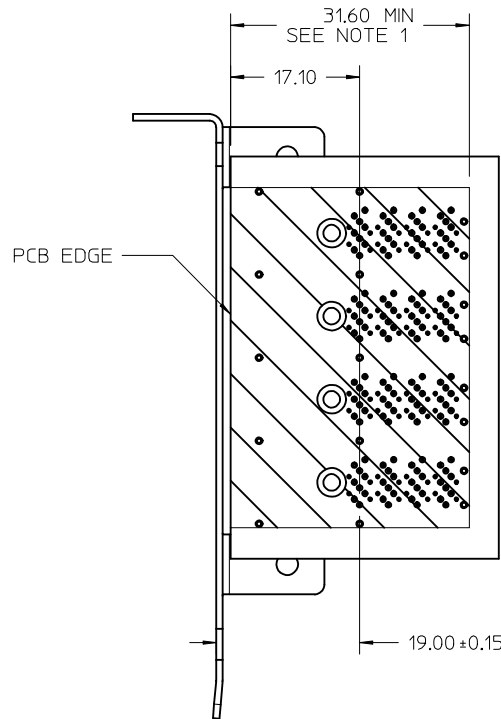
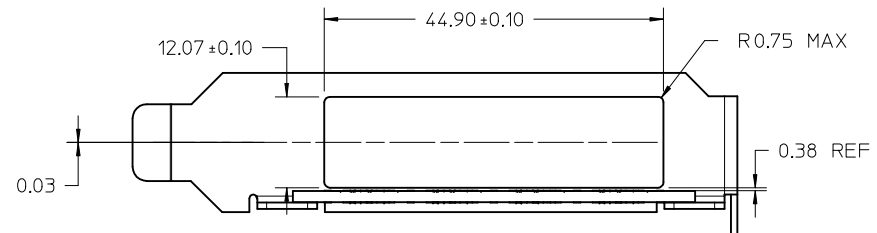


ILLUSTRATION OF
PCI ADD-IN CARD
BRACKET APPLICATION



PCB TO BRACKET VIEW

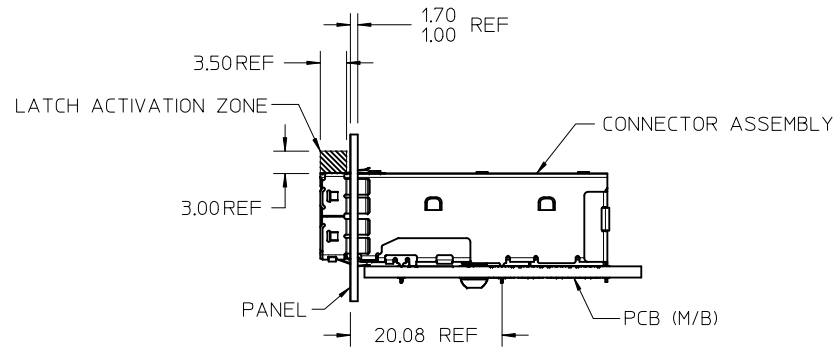


I/O BRACKET CUT OUT
(BRACKET NOT SUPPLIED)

NOTES:
1. CONNECTOR KEEP OUT ZONE: PCB COMPONENTS ARE NOT ALLOWED IN THIS AREA.

SEE SHEET 1 EC NO: UCP2016-0275 DRWN:TMCCLELL 2016/01/19 CHKD:TMCCLELLAND 2016/07/06 APPR:SMILLER 2016/07/06	QUALITY SYMBOLS ∇=0 ∇=0 ∇=0	GENERAL TOLERANCES (UNLESS SPECIFIED) mm INCH 4 PLACES ± --- ± --- 3 PLACES ± --- ± --- 2 PLACES ± 0.13 ± --- 1 PLACE ± 0.25 ± --- 0 PLACE ± ±	DIMENSION STYLE MM ONLY DRAWN BY DATE KLANG 2009/03/4 CHECKED BY DATE TMCCLELLAND 2010/01/14 APPROVED BY DATE MBANAKIS 2010/01/14	SCALE 2:1 DESIGN UNITS METRIC THIRD ANGLE PROJECTION	TITLE IPASS PLUS HD 1X4 ASSY	DOCUMENT NO. SD-76866-003	SHEET NO. 2 OF 6	
	ANGULAR ±1/2°	DRAFT WHERE APPLICABLE MUST REMAIN WITHIN DIMENSIONS	MATERIAL NO. SEE SHEET 1	THIS DRAWING CONTAINS INFORMATION THAT IS PROPRIETARY TO MOLEX. INCORPORATED AND SHOULD NOT BE USED WITHOUT WRITTEN PERMISSION				

ALL OTHER (M/B) APPLICATIONS



ASSEMBLED VIEW

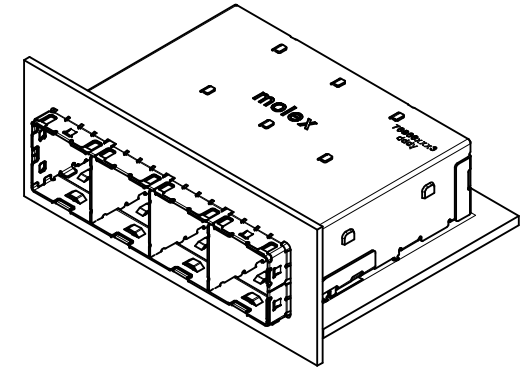
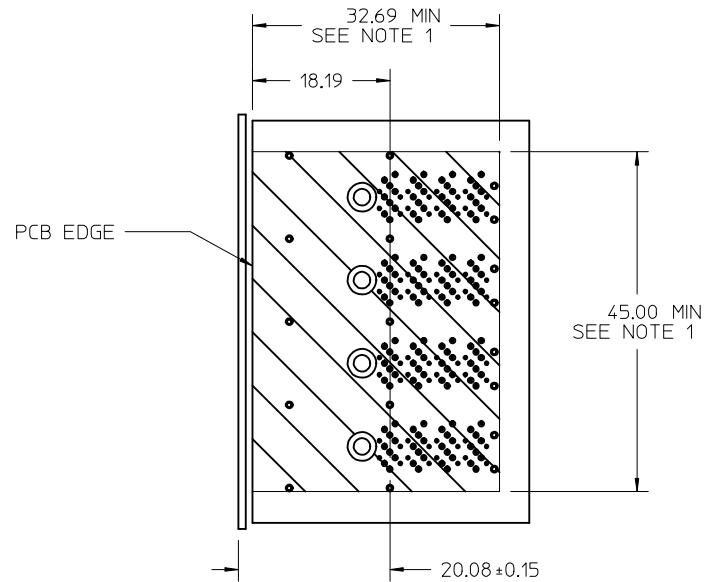
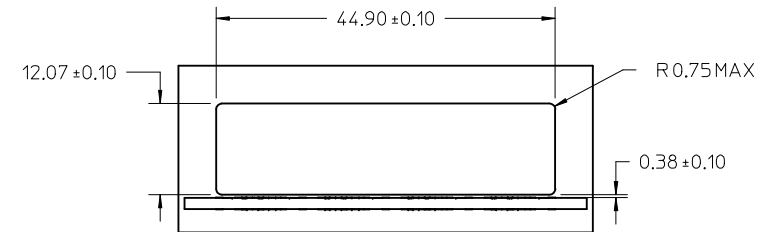


ILLUSTRATION OF ALL OTHER M/B BRACKET APPLICATION



PCB TO BRACKET VIEW



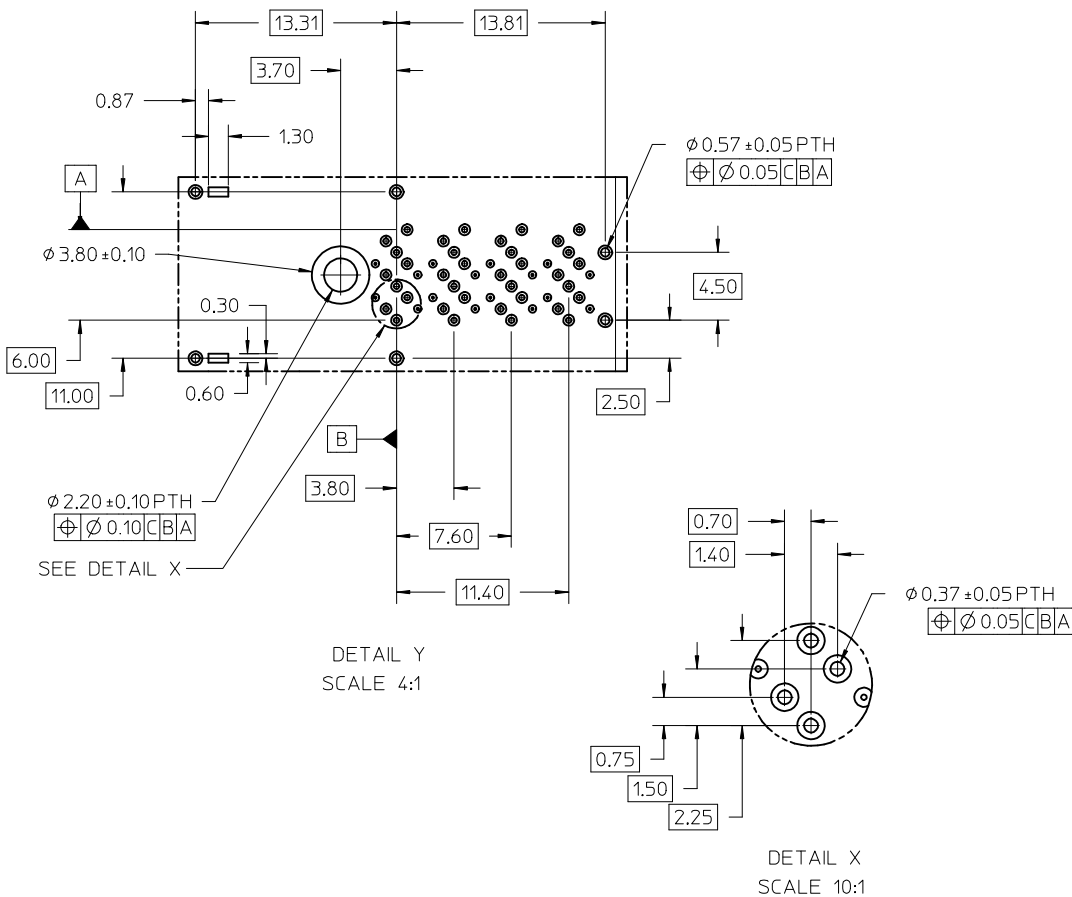
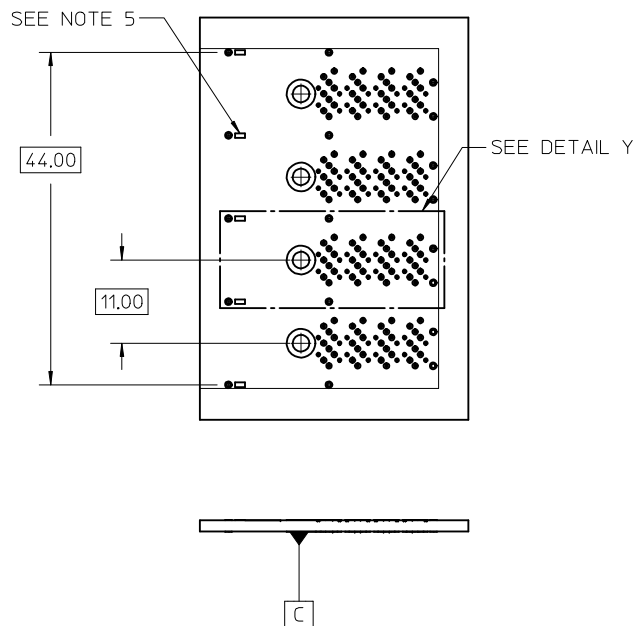
I/O BRACKET CUT OUT (BRACKET NOT SUPPLIED)

NOTES:
1. CONNECTOR KEEP OUT ZONE: PCB COMPONENTS ARE NOT ALLOWED IN THIS AREA.

SEE SHEET 1 EC NO: UCP2016-0275 DRAWN: TMCCLELL 2016/01/19 CHYKD: TMCCLELL AND 2016/07/06 APPR: SMILLER 2016/07/06	QUALITY SYMBOLS ▽=0 ▽=0 ▽=0	GENERAL TOLERANCES (UNLESS SPECIFIED)		DIMENSION STYLE MM ONLY		SCALE 2:1	DESIGN UNITS METRIC	THIRD ANGLE PROJECTION			
		4 PLACES ± --- ± ---	3 PLACES ± --- ± ---	2 PLACES ± 0.13 ± ---	1 PLACE ± 0.25 ± ---	0 PLACE ± ±	DRAWN BY KLANG	DATE 2009/03/4	TITLE IPASS PLUS HD 1X4 ASSY		
		ANGULAR ±1/2°					CHECKED BY TMCCLELLAND	DATE 2010/01/14	APPROVED BY MBANAKIS		
		DRAFT WHERE APPLICABLE MUST REMAIN WITHIN DIMENSIONS					MATERIAL NO. SEE SHEET 1	DATE 2010/01/14	DOCUMENT NO. SD-76866-003		SHEET NO. 3 OF 6

THIS DRAWING CONTAINS INFORMATION THAT IS PROPRIETARY TO MOLEX INCORPORATED AND SHOULD NOT BE USED WITHOUT WRITTEN PERMISSION

RECOMMENDED FOOTPRINT



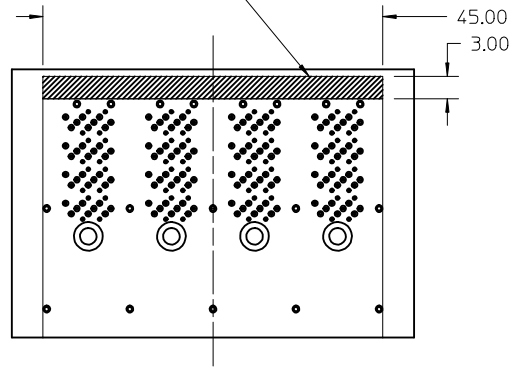
NOTES:

1. RECOMMENDED DRILL SIZE AND ANNULAR RING FOR 0.37ϕ FINISHED PTH - REFER TO APPLICATION SPECIFICATION AS-76866-001
2. MINIMUM RECOMMENDED SPACING: 47.00MM
3. MINIMUM PCB THICKNESS: 1.57MM
4. RECOMMENDED DRILL SIZE AND ANNULAR RING FOR 0.57ϕ FINISHED PTH - REFER TO APPLICATION SPECIFICATION AS-76866-001
5. CAGE STAND OFF AREA, NO TRACES ON SURFACE OF PCB IN THESE AREAS

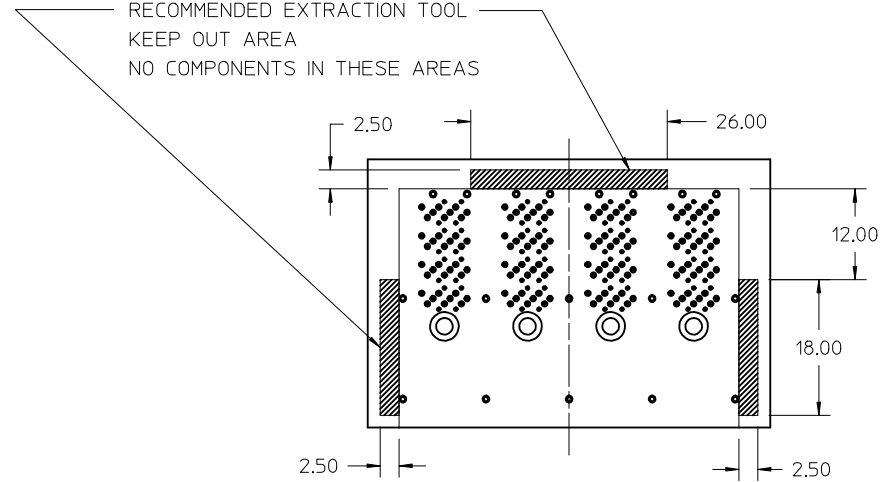
SEE SHEET 1 EC NO: UCP2016-0275 DRAWN: TMCCLELL 2016/01/19 CHKD: TMCCLELL AND 2016/07/06 APPR: SMILLER 2016/07/06	QUALITY SYMBOLS $\nabla = 0$ $\nabla = 0$ $\nabla = 0$	GENERAL TOLERANCES (UNLESS SPECIFIED)		DIMENSION STYLE	SCALE	DESIGN UNITS	THIRD ANGLE PROJECTION
		mm	INCH	MM ONLY	2:1	METRIC	
REV	DESCRIPTION	4 PLACES	± 0.13	DRAWN BY	DATE	IPASS PLUS HD 1X4 ASSY	
		3 PLACES	± 0.25	KLANG	2009/03/4		
		2 PLACES	± 0.13	CHECKED BY	DATE	molex	
		1 PLACE	± 0.25	TMCCLELLAND	2010/01/14		
		0 PLACE	\pm	APPROVED BY	DATE		
		MBANAKIS	2010/01/14	DOCUMENT NO.		SHEET NO.	
		ANGULAR $\pm 1/2^\circ$		SEE SHEET 1		SD-76866-003	4 OF 6
DRAFT WHERE APPLICABLE MUST REMAIN WITHIN DIMENSIONS		SIZE	THIS DRAWING CONTAINS INFORMATION THAT IS PROPRIETARY TO MOLEX INCORPORATED AND SHOULD NOT BE USED WITHOUT WRITTEN PERMISSION				

RECOMMENDED TOOLING KEEP OUT AREAS

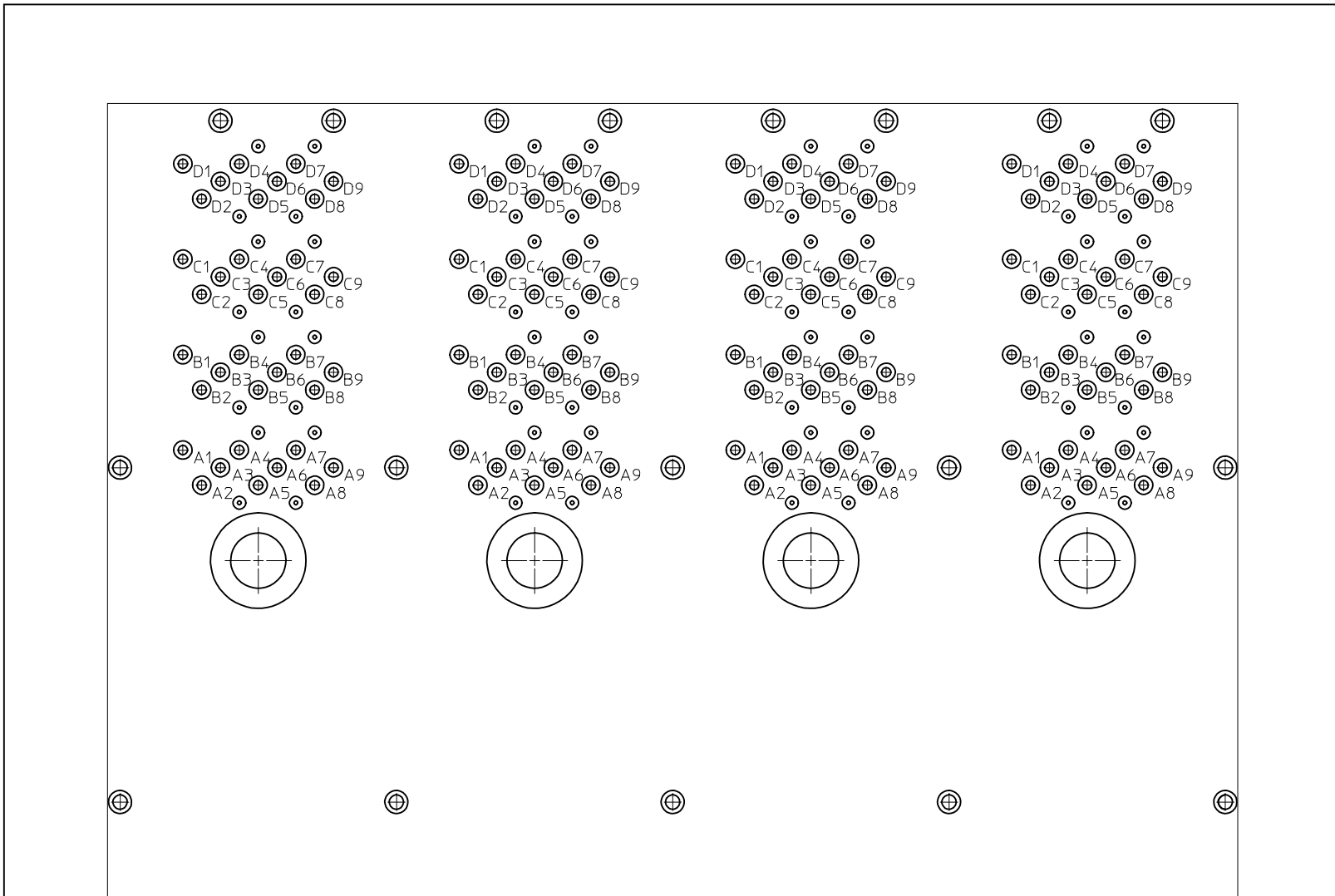
RECOMMENDED INSERTION TOOL
KEEP OUT AREA
NO COMPONENTS IN THIS AREA
MORE THAN 7.50 mm TALL



RECOMMENDED EXTRACTION TOOL
KEEP OUT AREA
NO COMPONENTS IN THESE AREAS



SEE SHEET 1 EC NO: UCP2016-0275 DRWN:TMCCLELL 2016/01/19 CHKD:TMCCLELLAND 2016/07/06 APPR:SMILLER 2016/07/06	QUALITY SYMBOLS	GENERAL TOLERANCES (UNLESS SPECIFIED)	DIMENSION STYLE MM ONLY	SCALE 2:1	DESIGN UNITS METRIC	THIRD ANGLE PROJECTION
	▽=0	mm INCH	DRAWN BY DATE KLANG 2009/03/4	TITLE IPASS PLUS HD 1X4 ASSY		
	▽=0	4 PLACES ± --- ± ---	CHECKED BY DATE TMCCLELLAND 2010/01/14	molex DOCUMENT NO. SD-76866-003 SHEET NO. 5 OF 6		
	▽=0	3 PLACES ± --- ± ---	APPROVED BY DATE MBANAKIS 2010/01/14			
REV	DESCRIPTION	ANGULAR ±1/2°	MATERIAL NO.	SIZE C THIS DRAWING CONTAINS INFORMATION THAT IS PROPRIETARY TO MOLEX INCORPORATED AND SHOULD NOT BE USED WITHOUT WRITTEN PERMISSION		
		DRAFT WHERE APPLICABLE MUST REMAIN WITHIN DIMENSIONS	SEE SHEET 1			



CIRCUIT IDENTIFICATION

SEE SHEET 1 EC NO: UCP2016-0275 DRWN: TMCCLELL 2016/01/19 CHKD: TMCCLELLAND 2016/07/06 APPR: SMILLER 2016/07/06	QUALITY SYMBOLS ▽=0 ▽=0 ▽=0	GENERAL TOLERANCES (UNLESS SPECIFIED) <table border="1"> <tr> <th></th> <th>mm</th> <th>INCH</th> </tr> <tr> <td>4 PLACES</td> <td>± .005</td> <td>± .0004</td> </tr> <tr> <td>3 PLACES</td> <td>± .008</td> <td>± .0003</td> </tr> <tr> <td>2 PLACES</td> <td>± 0.13</td> <td>± .005</td> </tr> <tr> <td>1 PLACE</td> <td>± 0.25</td> <td>± .010</td> </tr> <tr> <td>0 PLACE</td> <td>±</td> <td>±</td> </tr> </table>		mm	INCH	4 PLACES	± .005	± .0004	3 PLACES	± .008	± .0003	2 PLACES	± 0.13	± .005	1 PLACE	± 0.25	± .010	0 PLACE	±	±	DIMENSION STYLE MM ONLY	SCALE 8:1	DESIGN UNITS METRIC	THIRD ANGLE PROJECTION
		mm	INCH																					
	4 PLACES	± .005	± .0004																					
	3 PLACES	± .008	± .0003																					
2 PLACES	± 0.13	± .005																						
1 PLACE	± 0.25	± .010																						
0 PLACE	±	±																						
MATERIAL NO. MBANAK1S	DATE 2010/01/14	DRAWN BY KLANG		TITLE IPASS PLUS HD 1X4 ASSY		DOCUMENT NO. SD-76866-003																		
DRAFT WHERE APPLICABLE MUST REMAIN WITHIN DIMENSIONS		CHECKED BY TMCCLELLAND		DATE 2010/01/14																				
SEE SHEET 1		APPROVED BY MBANAK1S		DATE 2010/01/14		SHEET NO. 6 OF 6																		
THIS DRAWING CONTAINS INFORMATION THAT IS PROPRIETARY TO MOLEX INCORPORATED AND SHOULD NOT BE USED WITHOUT WRITTEN PERMISSION																								