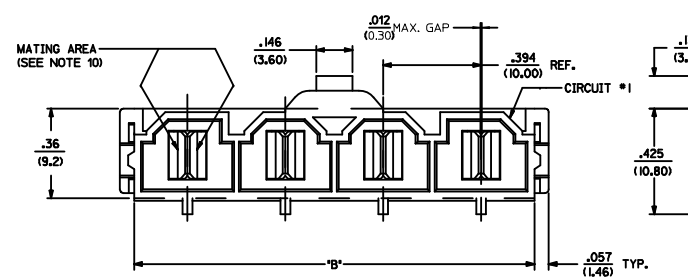
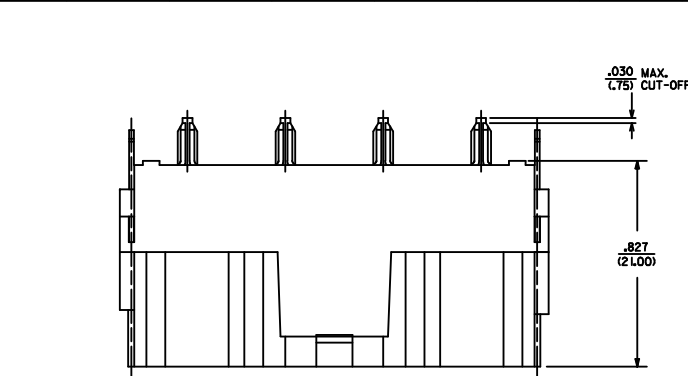
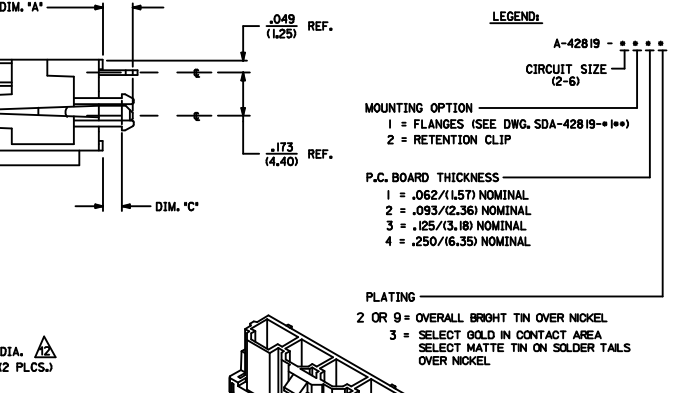


| ITEM NUMBER | CKT. SIZE | DIM. 'A' | DIM. 'B' | DIM. 'C' | TERMINAL PLATING | CLIP PLATING |
|-------------|-----------|-------------|---------------|-------------|----------------------------------|--------------|
| 42819-2212 | 2 | .138/(3.50) | .823/(20.90) | .071/(1.80) | | |
| 42819-2222 | 2 | .201/(5.10) | .823/(20.90) | .102/(2.60) | | |
| 42819-2229 | 2 | .201/(5.10) | .823/(20.90) | .102/(2.60) | | |
| 42819-2232 | 2 | .201/(5.10) | .823/(20.90) | .134/(3.40) | | |
| 42819-2242 | 2 | .327/(8.30) | .823/(20.90) | .259/(6.58) | | |
| 42819-3212 | 3 | .138/(3.50) | 1.216/(30.90) | .071/(1.80) | | |
| 42819-3222 | 3 | .201/(5.10) | 1.216/(30.90) | .102/(2.60) | | |
| 42819-3232 | 3 | .201/(5.10) | 1.216/(30.90) | .134/(3.40) | | |
| 42819-3242 | 3 | .327/(8.30) | 1.216/(30.90) | .259/(6.58) | | |
| 42819-4212 | 4 | .138/(3.50) | 1.610/(40.90) | .071/(1.80) | | |
| 42819-4222 | 4 | .201/(5.10) | 1.610/(40.90) | .102/(2.60) | | |
| 42819-4232 | 4 | .201/(5.10) | 1.610/(40.90) | .134/(3.40) | | |
| 42819-4242 | 4 | .327/(8.30) | 1.610/(40.90) | .259/(6.58) | | |
| 42819-5212 | 5 | .138/(3.50) | 2.004/(50.90) | .071/(1.80) | | |
| 42819-5222 | 5 | .201/(5.10) | 2.004/(50.90) | .102/(2.60) | | |
| 42819-5232 | 5 | .201/(5.10) | 2.004/(50.90) | .134/(3.40) | | |
| 42819-5242 | 5 | .327/(8.30) | 2.004/(50.90) | .259/(6.58) | | |
| 42819-6212 | 6 | .138/(3.50) | 2.398/(60.90) | .071/(1.80) | | |
| 42819-6222 | 6 | .201/(5.10) | 2.398/(60.90) | .102/(2.60) | | |
| 42819-6232 | 6 | .201/(5.10) | 2.398/(60.90) | .134/(3.40) | | |
| 42819-6242 | 6 | .327/(8.30) | 2.398/(60.90) | .259/(6.58) | | |
| 42819-2213 | 2 | .138/(3.50) | .823/(20.90) | .071/(1.80) | NONE | |
| 42819-2223 | 2 | .201/(5.10) | .823/(20.90) | .102/(2.60) | | |
| 42819-2233 | 2 | .201/(5.10) | .823/(20.90) | .134/(3.40) | | |
| 42819-2243 | 2 | .327/(8.30) | .823/(20.90) | .259/(6.58) | | |
| 42819-3213 | 3 | .138/(3.50) | 1.216/(30.90) | .071/(1.80) | | |
| 42819-3223 | 3 | .201/(5.10) | 1.216/(30.90) | .102/(2.60) | | |
| 42819-3233 | 3 | .201/(5.10) | 1.216/(30.90) | .134/(3.40) | | |
| 42819-3243 | 3 | .327/(8.30) | 1.216/(30.90) | .259/(6.58) | SELECT GOLD IN CONTACT AREA | |
| 42819-4213 | 4 | .138/(3.50) | 1.610/(40.90) | .071/(1.80) | | |
| 42819-4223 | 4 | .201/(5.10) | 1.610/(40.90) | .102/(2.60) | | |
| 42819-4233 | 4 | .201/(5.10) | 1.610/(40.90) | .134/(3.40) | | |
| 42819-4243 | 4 | .327/(8.30) | 1.610/(40.90) | .259/(6.58) | SELECT MATTE TIN ON SOLDER TAILS | |
| 42819-5213 | 5 | .138/(3.50) | 2.004/(50.90) | .071/(1.80) | | |
| 42819-5223 | 5 | .201/(5.10) | 2.004/(50.90) | .102/(2.60) | | |
| 42819-5233 | 5 | .201/(5.10) | 2.004/(50.90) | .134/(3.40) | | |
| 42819-5243 | 5 | .327/(8.30) | 2.004/(50.90) | .259/(6.58) | | |
| 42819-6213 | 6 | .138/(3.50) | 2.398/(60.90) | .071/(1.80) | | |
| 42819-6223 | 6 | .201/(5.10) | 2.398/(60.90) | .102/(2.60) | | |
| 42819-6233 | 6 | .201/(5.10) | 2.398/(60.90) | .134/(3.40) | | |
| 42819-6243 | 6 | .327/(8.30) | 2.398/(60.90) | .259/(6.58) | | |

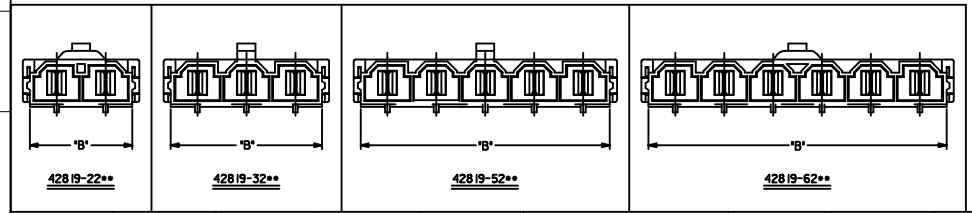


- NOTES:**
- MATERIAL:
HOUSING MATERIAL: 30% GLASS-FILLED NYLON4/6, U.L.L. 94V-0, COLOR: BLACK.
TERMINAL MATERIAL: ALLOY 15L
 - FINISH: 2 = .000100/(.00254) MIN. *TIN OVER .000050/(.00127) MIN. NICKEL.
3 = .000030/(.00076) MIN. SELECT GOLD IN CONTACT AREA. .000100/(.00254) MIN. SELECT *TIN ON SOLDER TAILS OVER .000050/(.00127) MIN. NICKEL.
* THE PRIMARY SHIPPING CARTON WILL BE LABELED "COMPLIANT TO ROHS DIRECTIVE 2002/95/EC AND ELV ANNEX II OF DIRECTIVE 2000/53/EC". CARTONS WITHOUT THIS LABEL MAY CONTAIN PRODUCT WITH TIN-LEAD.
 - PRODUCT SPECIFICATION: PS-42815-001
 - PACKAGING INFORMATION: PK-42819-2375
 - PART MATES WITH MOLEX RECEPTACLE *42816-*** WITH T.P.A.
 - PART IS DESIGNED IN METRIC.
 - AN "X" IN FRONT OF THE ITEM NUMBER INDICATES THE PART IS NOT TOOLED.
 - THIS PART MEETS U.L.L. 1950 REQUIREMENTS FOR CREEPAGE AND CLEARANCE AT 600 VAC AND 840 VDC.
 - PARTS ARE NOT TO BE MATED OR UNMATED WHILE CIRCUITS ARE LIVE.
 - WHEN USING OVERALL TIN PLATED TERMINALS; FOR APPLICATIONS INVOLVING VIBRATION AND/OR THERMAL CYCLING, MOLEX STRONGLY RECOMMENDS THE USE OF NYE LUBRICANT (NYGEL 760G) ON THE MATING SURFACES OF THE TERMINAL.
 - PARTS CONFORMS TO CLASS 'B' REQUIREMENTS OF COSMETIC SPECIFICATION PS-45499-002
- ⚠ BOARD CLIP HOLE MAY OR MAY NOT BE PLATED. REFER TO CHART FOR PLATED / UNPLATED CLIPS.



RECOMMENDED P.C. BOARD PLATED-THRU HOLE LAYOUT
(4 CKT. SHOWN FOR REF.)

HEADER WITH VERTICAL TERMINAL & CLIP
ISO VIEW



| ADD TERM. GAP DIM. E.C. NO. UCP2013-0293 DRAWN: AELHAG 2012/07/23 CHECKED: J.BELL 2012/07/23 APPROVED: M.W.H. 2012/09/11 REV. DESCRIPTION | QUALITY SYMBOLS ▽=0 ▽=0 | GENERAL TOLERANCES (UNLESS SPECIFIED) <table border="1"> <thead> <tr> <th></th> <th>mm</th> <th>INCH</th> </tr> </thead> <tbody> <tr> <td>4 PLACES</td> <td>±.005</td> <td>±.0005</td> </tr> <tr> <td>3 PLACES</td> <td>±.008</td> <td>±.0008</td> </tr> <tr> <td>2 PLACES</td> <td>±.015</td> <td>±.0015</td> </tr> <tr> <td>1 PLACE</td> <td>±.025</td> <td>±.0025</td> </tr> </tbody> </table> ANGULAR ±1/2° | | mm | INCH | 4 PLACES | ±.005 | ±.0005 | 3 PLACES | ±.008 | ±.0008 | 2 PLACES | ±.015 | ±.0015 | 1 PLACE | ±.025 | ±.0025 | DIMENSION STYLE IN/MM SCALE 4:1 DESIGN UNITS METRIC THIRD ANGLE PROJECTION | MATERIAL NO. SEE CHART DOCUMENT NO. SDA-42819-0002 SHEET NO. 1 OF 1 |
|---|--------------------------------------|---|--|----|------|----------|-------|--------|----------|-------|--------|----------|-------|--------|---------|-------|--------|---|---|
| | | | | mm | INCH | | | | | | | | | | | | | | |
| 4 PLACES | ±.005 | ±.0005 | | | | | | | | | | | | | | | | | |
| 3 PLACES | ±.008 | ±.0008 | | | | | | | | | | | | | | | | | |
| 2 PLACES | ±.015 | ±.0015 | | | | | | | | | | | | | | | | | |
| 1 PLACE | ±.025 | ±.0025 | | | | | | | | | | | | | | | | | |
| DRAFT WHERE APPLICABLE MUST REMAIN WITHIN DIMENSIONS | MOLEX INCORPORATED | | | | | | | | | | | | | | | | | | |