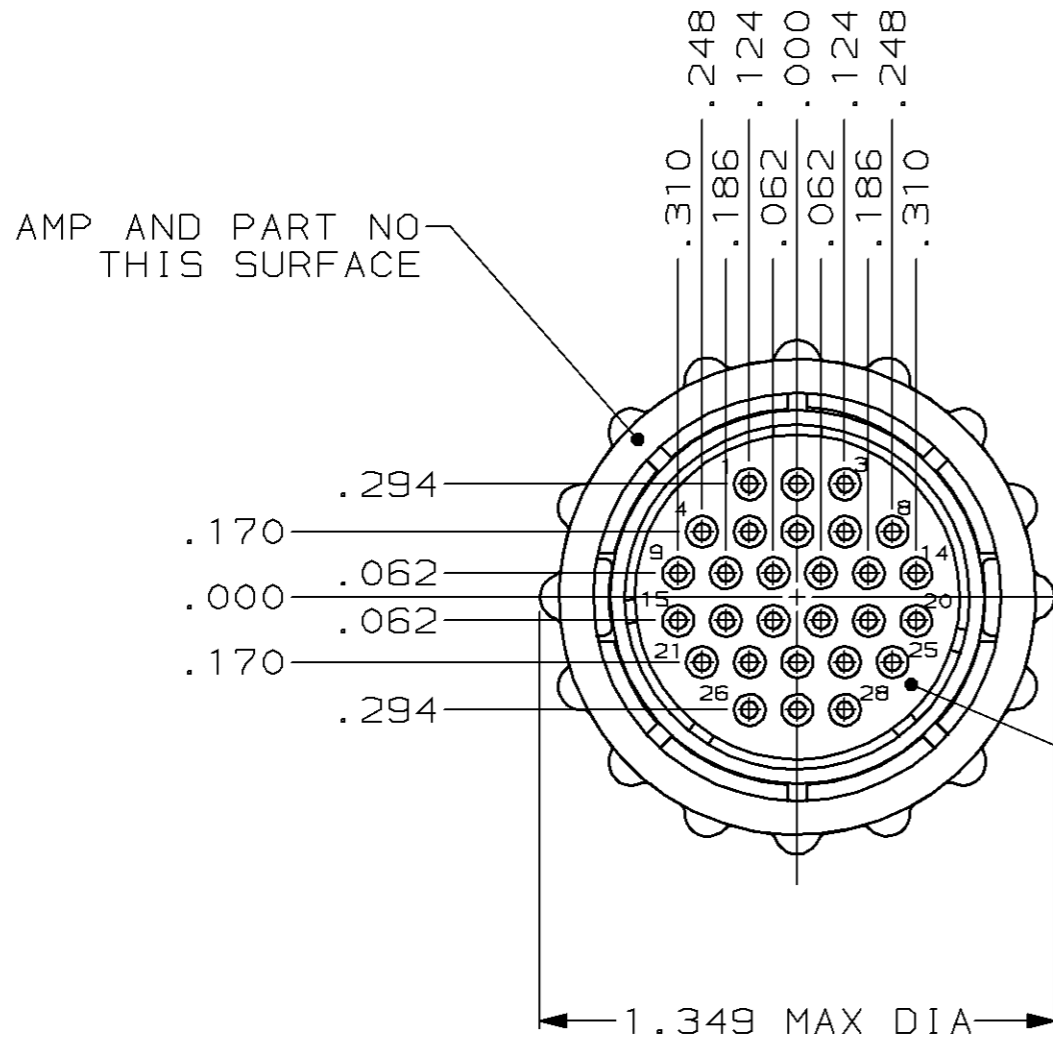


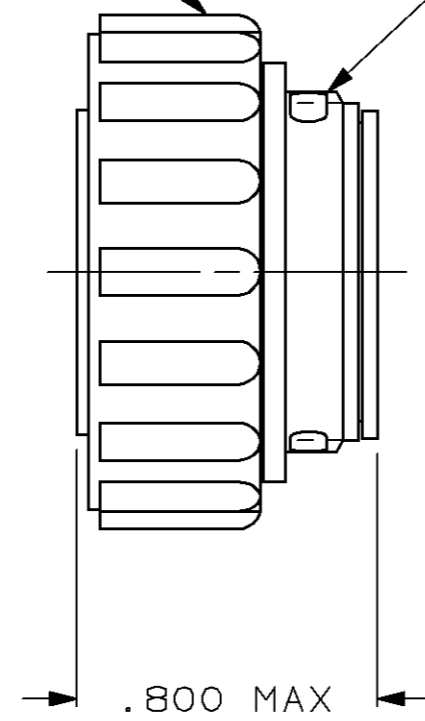
THIS DRAWING IS UNPUBLISHED. RELEASED FOR PUBLICATION, 19 .
 © COPYRIGHT 19 BY AMP INCORPORATED. ALL INTERNATIONAL RIGHTS RESERVED.

| LOC | DIST | P | F | REVISIONS | | | | |
|-----|------|---|---|-----------|-----|------------------------|-----------|------|
| | | | | ZONE | LTR | DESCRIPTION | DATE | APPD |
| FT | 4 | | | | E | REDRAWN | 4/1/91 | - |
| | | | | | F | REV PER EC 0020-568-95 | 19 JUL 95 | AF |
| | | | | | G | REV PER EC 0320-244-97 | 06 OCT 97 | KD |



POLYESTER, BLACK

GLASS FILLED NYLON, 6/6, BLACK



MATING FACE

206126-1
 PART NUMBER

- CONTACT CAVITIES IDENTIFIED BY CHARACTERS ON FRONT AND REAR FACES OF CONNECTOR.
- WILL ACCEPT (28) SIZE 20 SOCKET CONTACTS.

| | | |
|---|----------------------------|--|
| DO NOT SCALE PRINT, UNLESS SPECIFIED DIMENSIONS IN INCHES TOLERANCES ON: 2 PLC DEC ± - 3 PLC DEC ± .005 ANGLES ± - | DR 4/1/91 A. STAUB BG | AMP Incorporated Harrisburg, PA 17105-3608 |
| | CHK 7-23-92 W.G. LENKER | |
| | APPD 7-23-92 K. BEAVER | |
| | APPD 7-23-92 C. ROHDE | |
| MATERIAL SEE CALLOUTS | PRODUCT SPEC 108-10024 | NAME PLUG ASSEMBLY, FEED-THRU, SERIES 2, 17-28, CPC |
| FINISH - | APPLICATION SPEC - | SIZE B CAGE CODE 00779 DRAWING NO 206126 |
| | WEIGHT - | SCALE 2:1 SHEET 1 OF 1 |