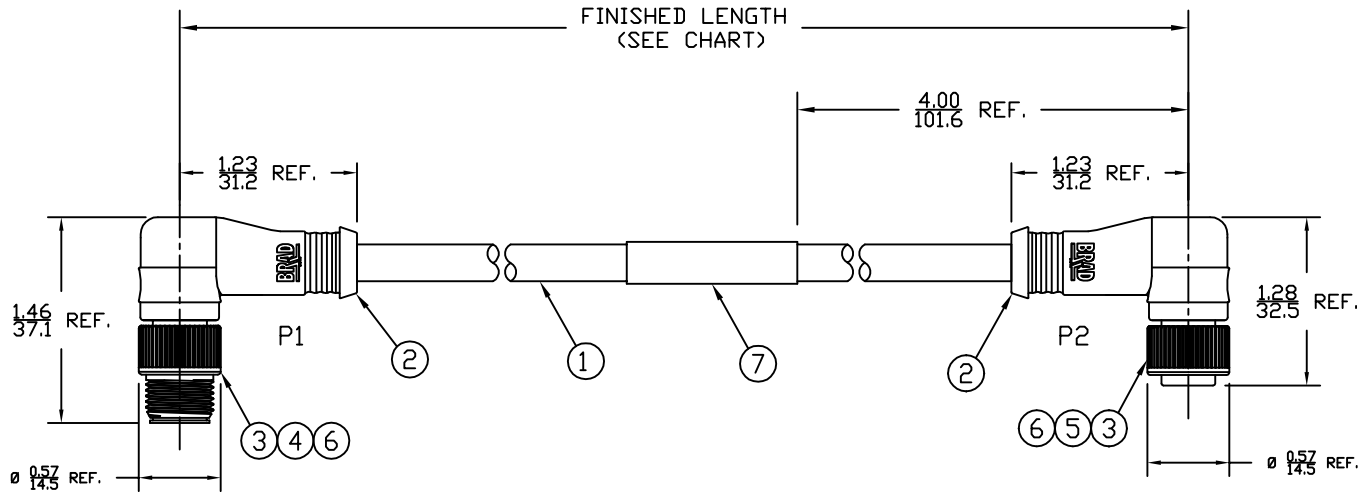
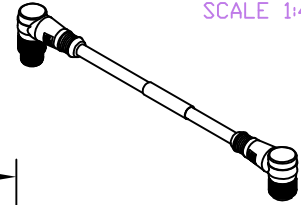


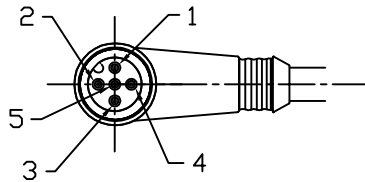
PART NUMBER	ENGINEERING NO.	LENGTH ± TOLERANCE
1300280183	DNDF33A-M010	3' 3" +2.19"/-0" [ 1M +55.6/-0 mm ]
1300280249	DNDF33A-M030	9' 10" +3.50"/-0" [ 3M +88.9/-0 mm ]
1300280185	DNDF33A-M050	16' 5" +6.50"/-0" [ 5M +165.1/-0 mm ]

AUX VIEW  
SCALE 1:4

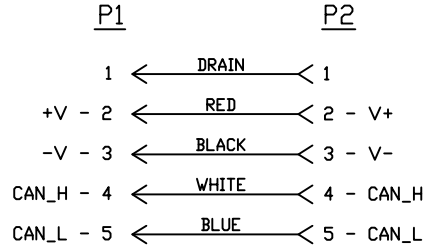


NOTES:

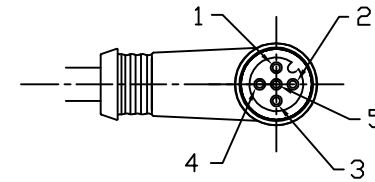
- MATERIAL: SEE TABLE
- FINISHES: SEE TABLE
- CABLE: #22/2, 24/2 + DRAIN, DEVICENET THIN HIGH FLEX EACH PAIR: SHIELDED, TWISTED OVERALL: SHIELDED, TPE
- ELECTRICAL DATA:  
MAX. VOLTAGE: 250V AC/DC  
MAX. CURRENT 4A
- ENVIRONMENTAL:  
PROTECTION IP67  
TEMPERATURE RANGE: -20°C TO 80°C
- WRAP LABEL IS MARKED WITH P/N, DATE CODE, VOLTAGE & AMPERAGE.
- ASSEMBLY IS RoHS COMPLIANT.



MALE- FACE VIEW



SCHEMATIC



FEMALE- FACE VIEW

ITEM	QTY.	DESCRIPTION	MATERIAL	FINISH
7	1	LABEL	PLASTIC FILM	BLACK/YELLOW
6	2	INSERT	NYLON	BLACK
5	5	SOCKET CONTACT	COPPER ALLOY	GOLD PLATED
4	5	PIN CONTACT	COPPER ALLOY	GOLD PLATED
3	2	M12 COUPLING NUT	ZINC DIE-CAST	BLACK
2	2	OVERMOLD	TPE	GRAY
1	1	DEVICENET CABLE	TPE JACKET	GRAY

SD RELEASE EC NO: WNA2010-0076 DRWN: VOU CHKD: BWOODMAN APPR: JFMURPHY 2009/08/10	8/5/09	DESCRIPTION REV
	QUALITY SYMBOLS	
	▽=0	
	▽C=0	
A		

GENERAL TOLERANCES (UNLESS SPECIFIED)	
	IN/MM
4 PLACES	±.005
3 PLACES	±.010
2 PLACES	±.015
1 PLACE	±.020
ANGULAR ±1/2°	
DRAFT WHERE APPLICABLE MUST REMAIN WITHIN DIMENSIONS	

DRAWN BY <b>VOU</b>	DATE <b>2009/07/30</b>
CHECKED BY <b>BWOODMAN</b>	DATE <b>2009/07/31</b>
APPROVED BY	DATE
MATERIAL NO.	DOCUMENT NO. <b>SD-130028-006</b>
SIZE <b>A</b>	THIS DRAWING CONTAINS INFORMATION THAT IS PROPRIETARY TO MOLEX INCORPORATED AND SHOULD NOT BE USED WITHOUT WRITTEN PERMISSION

DIMENSION STYLE <b>IN/MM</b>	SCALE <b>3:4</b>	DESIGN UNITS <b>INCH</b>	THIRD ANGLE PROJECTION
TITLE <b>M12 DEVICENET CABLE ASSY 5P MALE/FEM 90/90 #22/2 24/2 TPE -THIN FLX</b>			
<b>MOLEX INCORPORATED</b>			
SHEET NO. <b>1 OF 1</b>			