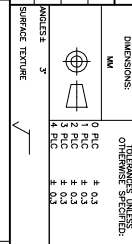


- NOTE  
 1. ARRANGE THE CONNECTOR DIRECTION FOLLOW A TRIANGLE MARK.  
 2. MATERIAL / PARTS WHICH ARE CONTAINED THE PROHIBITION SUBSTANCE FOR 4.3 (ENVIRONMENT RELATED SUBSTANCE) OF ENVIRONMENT RELATED SUBSTANCE CONTROL STANDARD (14-2.5.0.6) MUST NOT USE IN PRODUCT AND MANUFACTURING PROCESS.  
 3. CADMIUM CONTENT: 5ppm UNDER. ■: DIP INSPECTION ITEM.

LOC  
 DIS17

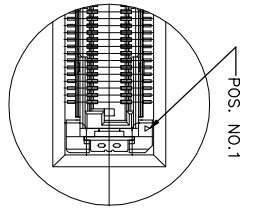
11JUN2018 3-430m 1E323629

REV	DESCRIPTION	DATE	BY	CHK
A1	RELEASED PER EDO-18-009117	07JUN2018	R.L	H.L

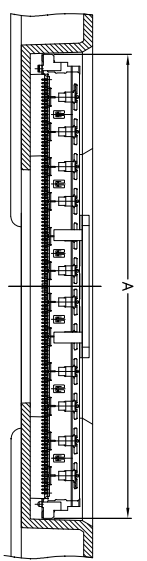


TRAY NO.	CONN. PIN	ON CAP	POS.	A	B	ROW	QTY	SIF COATING	NON SIF
412025-2	3	50	66.8	240	3	30	Y	NON SIF	NON SIF
			61.8	220	Y	NON SIF	NON SIF		
			56.8	200	N	NON SIF	NON SIF		
			51.8	180	N	NON SIF	NON SIF		
7-912066-4	3	70	49.3	170	5	50	Y	SIF COATING	SIF COATING
			44.3	150	Y	SIF COATING	SIF COATING		
			39.3	130	N	SIF COATING	SIF COATING		
			34.3	110	N	SIF COATING	SIF COATING		

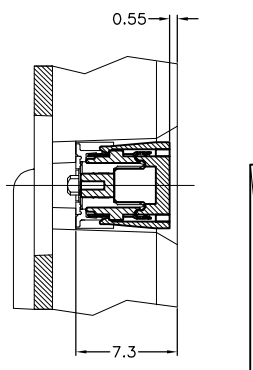
DETAIL A (SCALE 4:1)



SECT. A-A (SCALE 2:1)



SECT. B-B (SCALE 4:1)



SCALE: 1:1	DATE: 07JUN2018	REV: A1
SHEET 1 OF 1		REV: A1
P LTR		REVISION RECORD
DIM. APPD		DATE
INDICATE SURFACE FINISH		DATE
INDICATE SURFACE FINISH		DATE
INDICATE SURFACE FINISH		DATE

DIMENSIONS	0.05	0.1	0.2	0.3
0.1	0.2	0.3	0.4	0.5
0.5	0.6	0.7	0.8	0.9
1.0	1.2	1.5	1.8	2.0

DATE: 07JUN2018	REV: A1
DATE: 07JUN2018	REV: A1
DATE: 07JUN2018	REV: A1
DATE: 07JUN2018	REV: A1

DATE: 07JUN2018	REV: A1
DATE: 07JUN2018	REV: A1
DATE: 07JUN2018	REV: A1
DATE: 07JUN2018	REV: A1

DATE: 07JUN2018	REV: A1
DATE: 07JUN2018	REV: A1
DATE: 07JUN2018	REV: A1
DATE: 07JUN2018	REV: A1

DATE: 07JUN2018	REV: A1
DATE: 07JUN2018	REV: A1
DATE: 07JUN2018	REV: A1
DATE: 07JUN2018	REV: A1

DATE: 07JUN2018	REV: A1
DATE: 07JUN2018	REV: A1
DATE: 07JUN2018	REV: A1
DATE: 07JUN2018	REV: A1

DATE: 07JUN2018	REV: A1
DATE: 07JUN2018	REV: A1
DATE: 07JUN2018	REV: A1
DATE: 07JUN2018	REV: A1

DATE: 07JUN2018	REV: A1
DATE: 07JUN2018	REV: A1
DATE: 07JUN2018	REV: A1
DATE: 07JUN2018	REV: A1

DATE: 07JUN2018	REV: A1
DATE: 07JUN2018	REV: A1
DATE: 07JUN2018	REV: A1
DATE: 07JUN2018	REV: A1