

ITEM	PART#	DESCRIPTION	QTY	UOM
A,B	19091066	6CKT 2.36MM REC HOUSING 319106R1201	2	PC
C	2091102	093 Female Term Chain Tin 14-20	12	PC
D	--	PAPER PRINTED PAPER WHITE	1	PC

FROM	TO	DESCRIPTION	COLOR
A1	B3	1X14AWG DISC PVC BK UL1015 HOOKUP	BLACK
A2	B2	1X14AWG DISC PVC BK UL1015 HOOKUP	BLACK
A3	B1	1X14AWG DISC PVC BK UL1015 HOOKUP	BLACK
A4	B6	1X14AWG DISC PVC BK UL1015 HOOKUP	BLACK
A5	B5	1X14AWG DISC PVC BK UL1015 HOOKUP	BLACK
A6	B4	1X14AWG DISC PVC BK UL1015 HOOKUP	BLACK

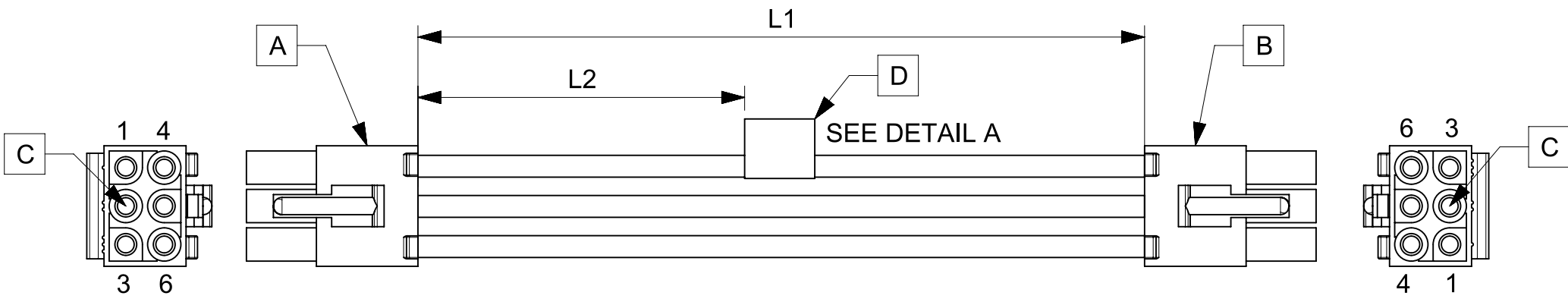


TABLE			
PART NUMBER	L1	L2	TITLE
2162901061	150±8	63 REF	STANDARD .093 6 CIRCUIT R TO R 150MM
2162901062	300±10	138 REF	STANDARD .093 6 CIRCUIT R TO R 300MM
2162901063	600±10	288 REF	STANDARD .093 6 CIRCUIT R TO R 600MM

NOTES

1. Cable assembly must pass 100% continuity and polarity test.
2. Connector view shown is from mating side.
3. Label text must be 2mm max. in height with Arial font.
4. Label must be wrapped in Flag type on a single cable.

MOLEX P/N
MOLEX
BATCH WK/YR
DETAIL A

REVISION			
DATE	REV	DESCRIPTION	CHANGER
2020/06/22	A	INITIAL RELEASE	ARAJU

FUNCTIONAL SYMBOLS $\frac{E}{A} = 0$ $\frac{E}{E} = 0$ $\frac{E}{P} = 0$ DIVISIONAL SYMBOLS	THIS DRAWING CONTAINS INFORMATION THAT IS PROPRIETARY TO MOLEX ELECTRONIC TECHNOLOGIES, LLC AND SHOULD NOT BE USED WITHOUT WRITTEN PERMISSION		CURRENT REV DESC:		
	DIMENSION UNITS	SCALE	GENERAL TOLERANCES (UNLESS SPECIFIED)		
	mm	NTS	ANGULAR TOL ± °		
	4 PLACES ±		3 PLACES ±		
3 PLACES ±		2 PLACES ±		EC NO: 643258	PRODUCT CUSTOMER DRAWING DOCUMENT NUMBER: 2162901061 DOC TYPE: PSD DOC PART: 000 REVISION: A
2 PLACES ±		1 PLACE ±		DRWN: ARAJU	
1 PLACE ±		0 PLACES ±		APPR: RDESAI01	
DRAFT WHERE APPLICABLE MUST REMAIN WITHIN DIMENSIONS		THIRD ANGLE PROJECTION	DRAWING	SERIES	
			A4-SIZE	216290	MATERIAL NUMBER: SEE TABLE
					CUSTOMER: GENERAL MARKET
					SHEET NUMBER: 1 OF 1