

4

3

2

1

THIS DRAWING IS UNPUBLISHED.

RELEASED FOR PUBLICATION

© COPYRIGHT

ALL RIGHTS RESERVED.

LOC DIST


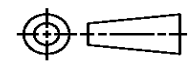
REVISIONS

P	LTR	DESCRIPTION	DATE	DWN	APVD

REPLACED BY OCEAN STYLE APPLICATOR PART NUMBER

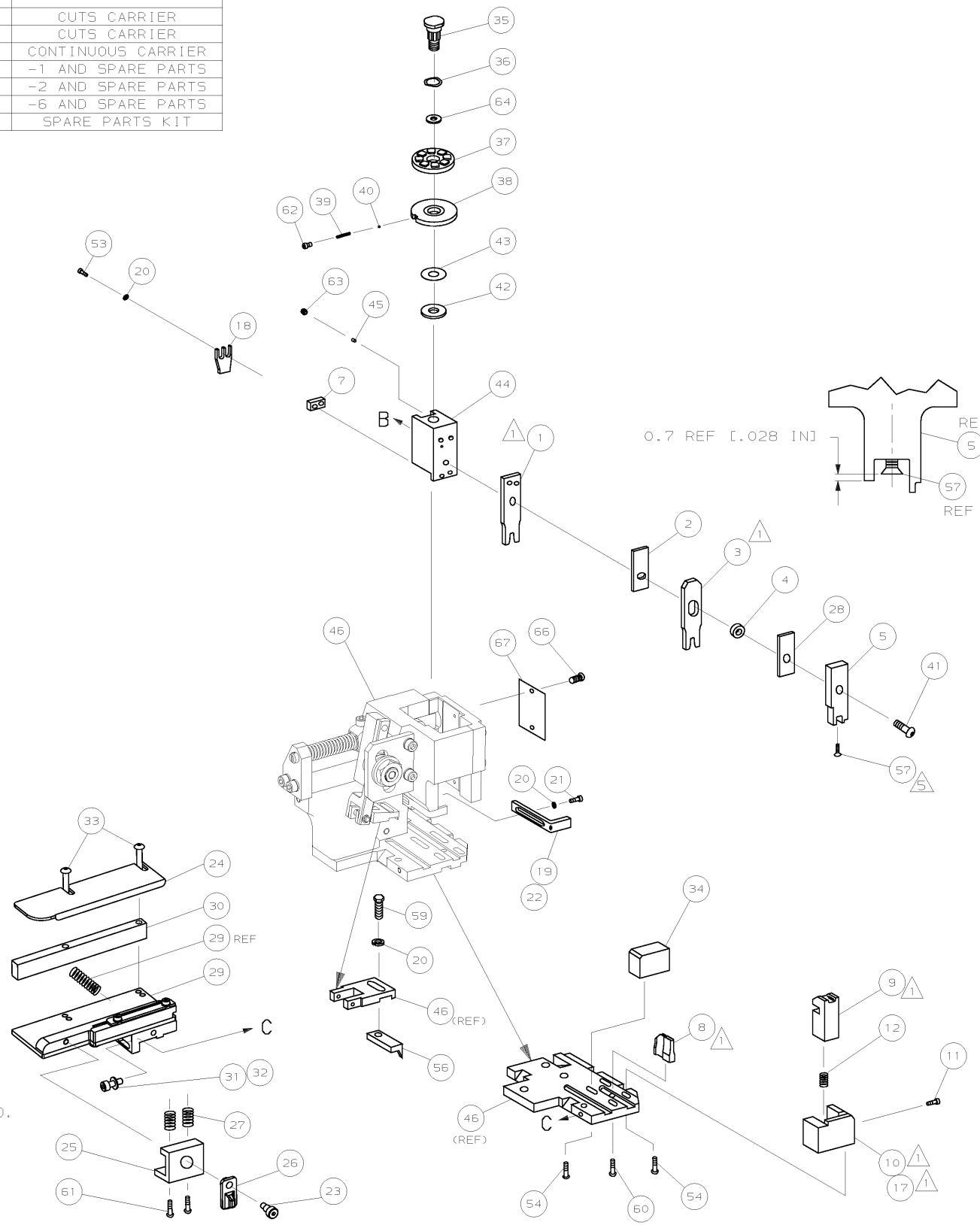
FOR REPLACEMENT PARTS FOR APPLICATOR REFER TO ADDITIONAL PAGE(S). SPARE PARTS KIT (IF LISTED) WILL REMAIN AVAILABLE.

THE REPLACEMENT OCEAN STYLE APPLICATOR HAS THE SAME TERMINATOR/PRESS INTERFACE AS APPLICATOR

THIS DRAWING IS A CONTROLLED DOCUMENT.		DWN	 TE Connectivity		
DIMENSIONS:		CHK			
TOLERANCES UNLESS OTHERWISE SPECIFIED:		APVD	NAME		
		PRODUCT SPEC	RESTRICTED TO		
		APPLICATION SPEC	SIZE	CAGE CODE	DRAWING NO
MATERIAL	FINISH	WEIGHT	A3	C-	
		SCALE	SHEET	OF	REV

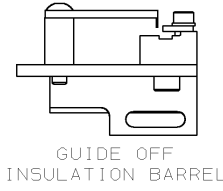
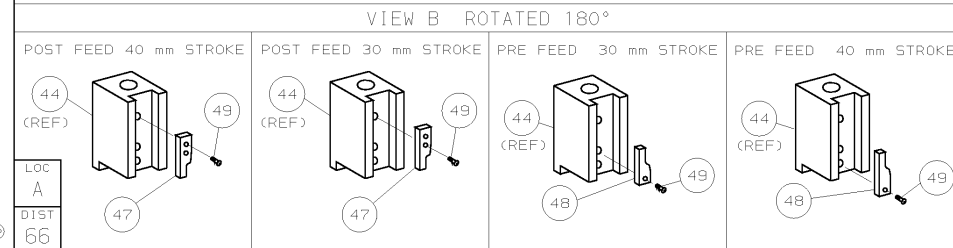
PART NUMBER	REV	FIRST USED	TERMINATOR	FEED TYPE	DESCRIPTION
1426471-1	A	-	LEADMAKER	MECH POST FEED	CUTS CARRIER
1426471-2	A	-	BENCH	MECH PRE FEED	CUTS CARRIER
1426471-6	A	-	LEADMAKER	MECH POST FEED	CONTINUOUS CARRIER
7-1426471-1	A	-	LEADMAKER	MECH POST FEED	-1 AND SPARE PARTS
7-1426471-2	A	-	BENCH	MECH PRE FEED	-2 AND SPARE PARTS
7-1426471-6	A	-	LEADMAKER	MECH POST FEED	-6 AND SPARE PARTS
7-1426471-7	A	-	-	-	SPARE PARTS KIT

CRIMP DATA AMP TERMINAL AMP CRIMP SPECS			
TERMINAL NAME: CRIMP CONTACT ELO			
CRIMP	SIZE	TYPE	RANGE
WIRE	1.40 [.055 IN]	F	0.35-0.50mm ²
INSUL	3.05 [.120 IN]	0	2.60 [.102 IN]
WIRE STRIP LENGTH		APPL INSTRUCTION	
3.70-3.90 [.146-.154 IN]		408-8322	
TERMINAL	FEED		
APPL SPEC 114-18432	10.16 [.400 IN]		
TERMINALS APPLIED			
TERMINAL	SEAL		
1411554	1393457-1	-	-
1411556	1393457-2	-	-
1411572	-	-	-
1411578	-	-	-
WIRE SIZE	CRIMP HEIGHT	PIN PN AND LENGTH [IN]	
0.50mm ²	1.00 ±0.03 [.039 ±.001 IN]	4-354779-2 [.3200]	
0.35mm ²	0.92 ±0.03 [.036 ±.001 IN]	4-354779-8 [.3230]	



QTY	REQD	PER	ASSY	PART NO	DESCRIPTION	ITEM NO		
-	1	1	1	1	1	1426471	PRINT, APPLICATOR LOG SHEET	73
-	1	1	1	1	1	1338705-1	DOCUMENTATION PACKAGE	72
-	-	-	-	-	-	-	-	71
-	-	-	-	-	-	-	-	70
-	-	-	-	-	-	-	-	69
-	-	-	-	-	-	-	-	68
-	1	1	1	1	1	461264-1	PLATE, IDENTIFICATION	67
-	2	2	2	2	2	21017-2	SCR,DRIVE (#2x.19) ID PLATE	66
-	-	-	-	-	-	-	-	65
-	1	1	1	1	1	986950-1	WASHER, FLAT PRECISION	64
-	1	1	1	1	1	3-18031-0	SCR,SKT SET (M6X6) RAM	63
-	1	1	1	1	1	18023-9	SCR,SHC (M4X6) INS DISC	62
-	2	2	2	2	2	1-18024-5	SCR,BHC (M5X25) DRAG	61
-	1	1	1	1	1	18024-7	SCR,BHC (M4X10) ANVIL	60
-	1	1	1	1	1	5-18022-2	SCR,HEX (M4X8) FEED FINGER	59
-	-	-	-	-	-	-	-	58
-	1	1	1	1	1	985575-3	SCR,FHC (M3X10) DEP	57
-	1	1	1	1	1	1338685-1	PAWL, FEED	56
-	-	-	-	-	-	-	-	55
-	4	4	4	4	4	18024-8	SCR,BHC (M4X12) SHEAR HOLDER	54
-	2	2	2	2	2	1-18023-1	SCR,SHC (M4X10) TERM HLD DWN	53
-	-	-	-	-	-	-	-	52
-	-	-	-	-	-	-	-	51
-	-	-	-	-	-	-	-	50
-	1	1	1	1	1	18024-3	SCR,BHC (M3X10) CAM	49
-	1	1	1	1	1	1338675-1	CAM, PRE FEED 30 & 40 mm ST	48
-	1	1	1	1	1	1338676-1	CAM, POST FEED 30 & 40 mm ST	47
-	1	1	1	1	1	1320999-3	APPLICATOR BASIC SUBASSY	46
-	1	1	1	1	1	690191-1	PLUG, NYLON	45
-	1	1	1	1	1	1338660-1	RAM	44
-	1	1	1	1	1	690125-1	WASHER, LAMINATED	43
-	1	1	1	1	1	690124-1	WASHER, RAM	42
-	1	1	1	1	1	2-18024-6	SCR,BHC (M8X25) RAM	41
-	1	1	1	1	1	23241-1	BALL, STEEL	40
-	1	1	1	1	1	2-22278-7	SPRING, COMPRESSION	39
-	1	1	1	1	1	1320922-1	DISC, INSULATION	38
-	1	1	1	1	1	354777-1	WIRE DISC, PLASTIC	37
-	1	1	1	1	1	22480-5	WASHER, SPRING	36
-	1	1	1	1	1	690212-1	POST, RAM	35
-	1	1	1	1	1	1320934-6	SUPPORT, TERMINAL	34
-	2	2	2	2	2	1-18024-0	SCR,BHC (M4X20) STRIP GUIDE	33
-	1	1	1	1	1	18027-2	WASHER, FLAT (M4)	32
-	1	1	1	1	1	1-18023-2	SCR,SKT CAP (M4X12) MOUNT BLOCK	31
-	1	1	1	1	1	1320908-1	SPACER, STRIP GUIDE	30
-	1	1	1	1	1	1633073-1	STRIP GUIDE PLATE ASSY	29
-	1	1	1	1	1	2-455888-4	SPACER, FRONT SHEAR DEP	28
-	2	2	2	2	2	1-22284-0	SPRING, DRAG	27
-	1	1	1	1	1	356835-1	LEVER, DRAG RELEASE	26
-	1	1	1	1	1	240792-1	DRAG, TERMINAL	25
-	1	1	1	1	1	1320928-1	PLATE, STRIP GUIDE	24
-	1	1	1	1	1	980371-4	SCR,SHC SHLD	23
-	1	1	1	1	1	690472-2	STRIPPER	22
-	1	1	1	1	1	1-18023-1	SCR,SHC (M4X10) STRIPPER	21
-	4	4	4	4	4	18025-2	WASHER,LOCK (M4) STRIPPER	20
-	-	-	-	-	-	-	-	19
-	1	1	1	1	1	879657-2	HOLDER, TERMINAL	18
-	1	-	-	-	-	1338684-2	HOLDER, SHEAR, FRONT (NO-CUT)	17
-	-	-	-	-	-	-	-	16
-	-	-	-	-	-	-	-	15
-	-	-	-	-	-	-	-	14
-	-	-	-	-	-	-	-	13
-	1	1	1	1	1	5-22280-0	SPRING, SHEAR	12
-	1	1	1	1	1	356885-5	STOP, SHEAR	11
-	-	-	-	-	-	-	-	10
-	1	1	1	1	1	1-1320921-0	HOLDER, SHEAR, FRONT (CUT)	9
-	1	2	2	2	2	318707-3	SHEAR, FLOAT (FRONT)	8
-	1	1	1	1	1	5-1333201-4	ANVIL	7
-	-	-	-	-	-	-	-	6
-	-	-	-	-	-	-	-	5
-	1	1	1	1	1	1338680-2	DEPRESSOR, SHEAR (FRONT)	4
-	1	1	1	1	1	238011-4	SPACER, BLOCK CRIMPER	3
-	1	2	2	2	2	1-562244-8	CRIMPER, INSULATION	2
-	1	1	1	1	1	455888-4	SPACER, CRIMPER	1
-	1	2	2	2	2	1-456402-4	CRIMPER, WIRE	1

- 1. RECOMMENDED SPARE PARTS.
- 2. GREASE RAM, CAM, CAM FOLLOWER AND FEED ROD LIGHTLY.
- 3. LUBRICATE DAILY PER THE APPLICATOR INSTRUCTION SHEET SUPPLIED WITH THE APPLICATOR.
- 4. THIS APPLICATOR APPLIES TERMINAL WITH A SEAL. INSULATION Ø QUOTED IS OUTER Ø OF SEAL & THE INSULATION DIAMETER IS DEPENDENT UPON SEAL BEING APPLIED. SEE CUSTOMER DRGS. FOR SEAL INS. RANGES AND FOR TERMINAL TO SEAL COMPATIBILITY.
- 5. APPLY TORQ-SEAL IN ALLEN SOCKET TO FILL HOLE AFTER FLAT HD HAS BEEN ADJUSTED TO CORRECT HEIGHT AT QUALIFICATION. APPLY #1-23419-5 LOC-TITE TO THREADS.



REVISION RECORD

REV	DATE	DESCRIPTION
A	015A-0085-04	SEE ECN
O1	0.22mm ² WIRE DELETED	
P1	REVISION RECORD	

DATE: L.J.L. JAN04

SCALE: 1:1

DR: M. CLIFFORD

CHK: -

REL: 30 JAN04

APP: 09DEC03

APP: 09DEC03

F. BACKHURST

L. LOFTHOUSE

AMP

Yogo Electronics

Harrisburg, PA 17105-3608

NAME: SIDE FEED HD-I APPLICATOR

MACHINE REF: HD-I APPL

SCALE: 1:1

DWG NO: 1426471

SHEET: 1 of 1

REV: A

CUSTOMER AND ASSEMBLY DRAWING

THIS DRAWING IS A CONTROLLED DOCUMENT

LAYOUT L1426471

SET UP GAGE 458637-3

PREPARED FOR PUBLICATION BY AMP INCORPORATED. ALL RIGHTS RESERVED.

AMP 1756 REV 3-92

1426471