

**SAFETY ORGANIZATION(S):**

THIS FILTER HAS BEEN FORMALLY RECOGNIZED, CERTIFIED OR APPROVED BY THE LISTED AGENCY. THEREFORE, ALL TEST/REQUIREMENTS SPECIFIED IN THE LATEST REVISION OF THE FOLLOWING AGENCY STANDARDS HAVE BEEN MET.

UL RECOGNIZED                   UL 1283, 544  
 CSA CERTIFIED                CSA 22.2, NO.0,0.4,8  
 VDE APPROVED                VDE 565-3, 625

**RELIABILITY SPECIFICATIONS:**

STORAGE TEMPERATURE:           -40°C TO +85°C  
 HUMIDITY:                           21 DAYS @ 40°C 95% RH  
 CURRENT OVERLOAD TEST:         6 TIMES RATED CURRENT FOR 8 SECONDS  
**TEST SPECIFICATIONS:**  
 INDUCTANCE:                       .93mH NOMINAL  
 CAPACITANCE: (MEASURED @ 1 KHz, 0.25 VAC MAX., 25°C ±1°C)

LINE TO LINE:                       .009µF ±20%  
 DISCHARGE RESISTOR:             1.5 MΩ  
 LINE/GROUND AND LINE/LINE     6000 MΩ (MIN) AT 100 VDC  
 INSULATION RESISTANCE         20°C AND 50% RH  
 (W/O DISCHARGE RESISTOR)

**RECOMMENDED RECEIVING INSPECTION HIPOT:**  
 LINES TO GROUND:               1500 VAC FOR 1 MINUTE  
 LINE TO LINE:                    1450 VDC FOR 1 MINUTE

**FILTER APPROVAL:**  
 THE BEST WAY TO SELECT AND QUALIFY A FILTER IS FOR YOUR ENGINEERING TO TEST THE UNIT IN YOUR EQUIPMENT.

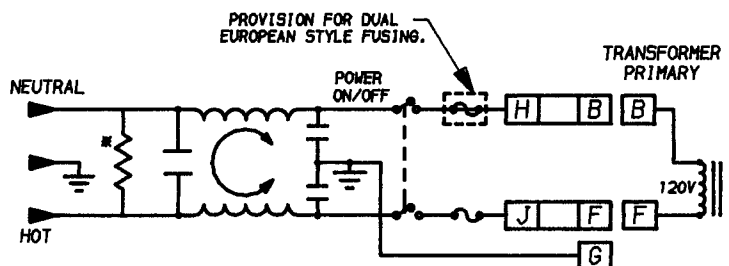
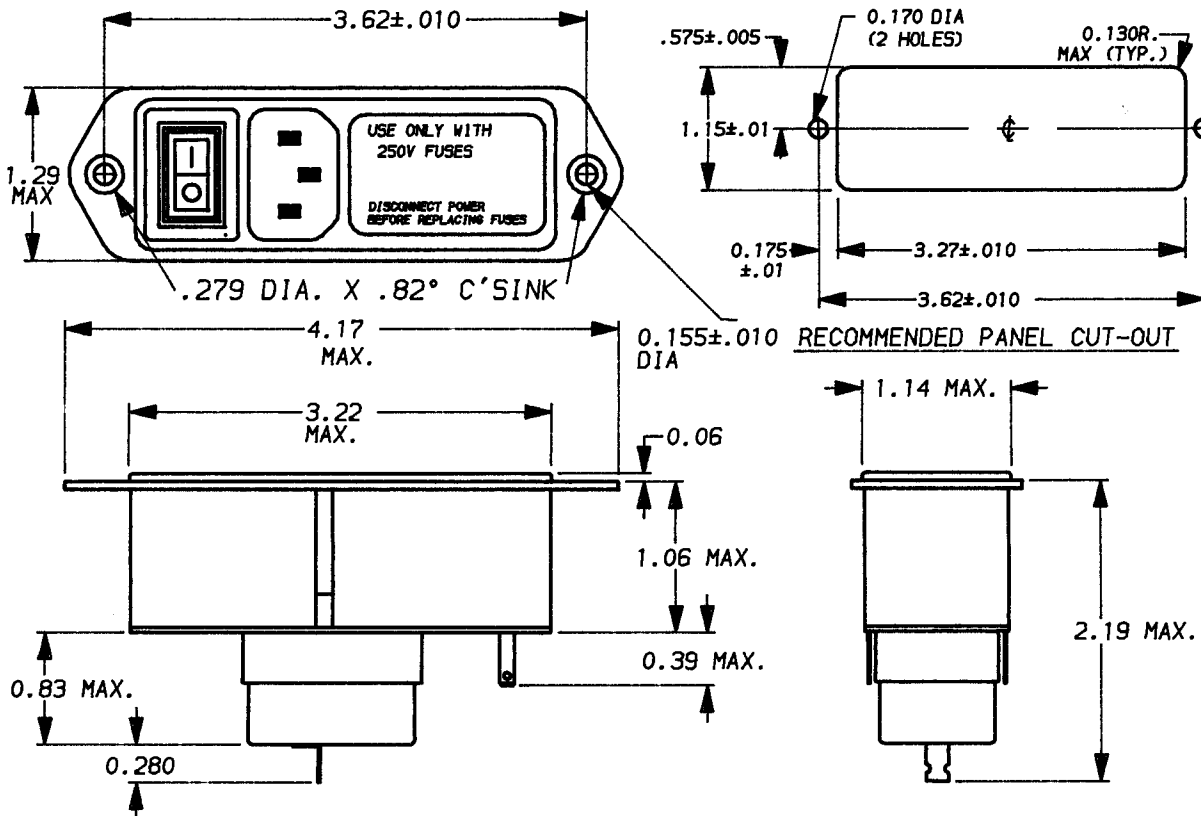
**OPERATING SPECIFICATIONS:**

LINE VOLTAGE/CURRENT:           5 AMP., 120 VAC  
    4 AMP., 250 VAC  
    4 AMP./40°C, 250 VAC  
 LINE FREQUENCY:                 50-60Hz  
 MAX. LEAKAGE CURRENT, EACH   2µA AT 120V 60Hz  
    5µA AT 250V 50Hz  
 OPERATING AMBIENT TEMP. RANGE: -10°C TO +40°C @ RATED CURRENT, I<sub>r</sub>

IN AN AMBIENT, T<sub>a</sub>, HIGHER THAN 40°C, THE MAXIMUM OPERATING CURRENT, I<sub>o</sub>, IS AS FOLLOWS:

$$I_o = I_r \sqrt{\frac{85 - T_a}{45}}$$

SEHM1S



\*RESISTOR ADDED TO PRODUCT BUILT AFTER 3-30-92 (9212).

50Ω - 50Ω (MINIMUM) INSERTION LOSS								
FREQUENCY MHz	.15	.50	1.0	2.0	5.0	10	20	30
COMMON dB	14	18	19	21	22	22	19	17
DIFF. dB								

	UNLESS OTHERWISE SPECIFIED, TOLERANCE TO BE ±.025 MATERIAL & FINISH: AS SUPPLIED	 LIBERTYVILLE, IL 60048 <b>POWER LINE FILTER</b>	
	This document is proprietary to CORCOM INC. and is not to be reproduced nor used for manufacturing purposes except on CORCOM'S prior written consent.		
			CAD NO.