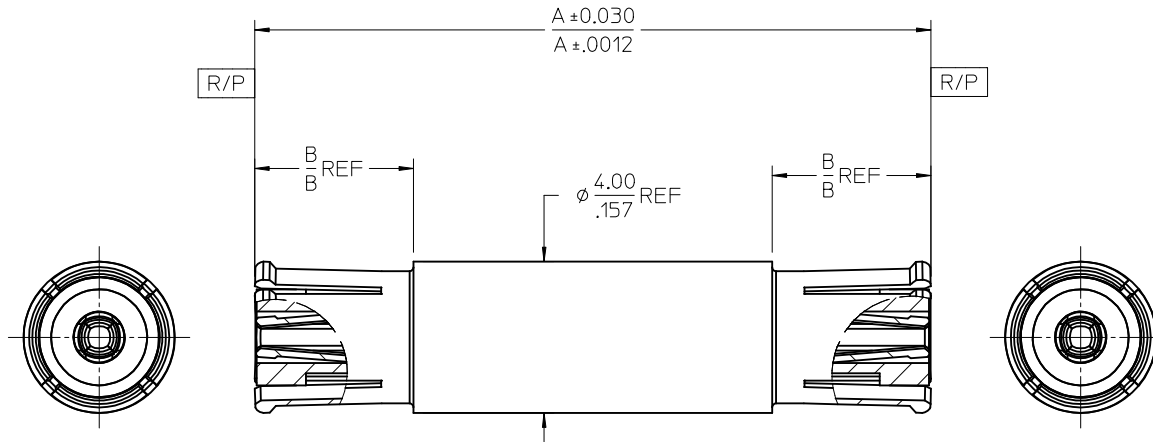
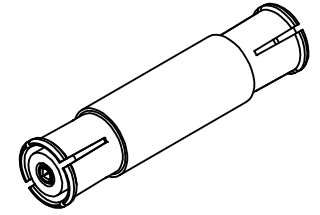


MATERIALS AND FINISHES:

BODY: BERYLLIUM COPPER  
PLATED: SEE TABLE

INSULATOR: PTFE

CONTACT: BERYLLIUM COPPER  
PLATED: GOLD (8μ-in MIN)  
OVER NICKEL PHOSPHOR (80μ-in MIN)



NOTE:

RATED VOLTAGE: 1000 Vrms

ELECTRICAL

1.07 / -30dB	1.09 / -27 dB	1.14 / -24 dB
DC - 2 GHz	2 - 4 GHz	4 - 6 GHz
VSWR / RL		

NOTE: ABOVE DATA ARE FOR INDIVIDUAL CONNECTOR.

73420-5366	TRI-M3	TRAY, 80 PCS
73420-5365	TRI-M3	TRAY, 80 PCS
73420-5364	GOLD (1μ-in MIN) OVER NICKEL PHOSPHOR (80μ-in MIN)	SMALL TRAY, 20 PCS
73420-5363	TRI-M3	SMALL TRAY, 20 PCS
73420-5362	GOLD (8μ-in MIN) OVER NICKEL PHOSPHOR (80μ-in MIN)	TRAY, 54 PCS
73420-5361	GOLD (1μ-in MIN) OVER NICKEL PHOSPHOR (80μ-in MIN)	TRAY, 80 PCS
73420-5360	TRI-M3	TRAY, 80 PCS
PART NO.	DESCRIPTION, BODY FINISH	PACKAGING

73420-5366	15.60/.614	5.00/.197
73420-5365	14.90/.587	4.20/.165
73420-5364	11.35/.447	4.20/.165
73420-5363	17.90/.705	4.20/.165
73420-5362	49.15/1.935	4.20/.165
73420-5361	11.35/.447	4.20/.165
73420-5360	17.90/.705	4.20/.165
PART NO	DIM A (MM/IN)	DIM B (MM/IN)

PS-89675-3760	ELEC/MECH PERFORMANCE
SPECIFICATION	DESCRIPTION

CHG: ADD TOLERANCE TO DIM A IN IZ ZONE. UPD MATERIALS AND FINISHES NOTE. EC NO: URF-2018-0002 DRWIN: PRAKASH01 2017/07/07 CHKD: 888 2017/07/07 APPR: AROBERTSON 2017/08/16	QUALITY SYMBOLS
	▽=0
	▽=0
	▽=0
REV	DESCRIPTION
A7	

GENERAL TOLERANCES (UNLESS SPECIFIED)

	mm	INCH
4 PLACES	± .010	± .0004
3 PLACES	± .010	± .0004
2 PLACES	± 0.25	± .010
1 PLACE	± .010	± .0004
0 PLACE	± .010	± .0004

ANGULAR ± 2 °

DRAFT WHERE APPLICABLE MUST REMAIN WITHIN DIMENSIONS

DIMENSION STYLE		SCALE
MM/IN		METRIC
DRAWN BY	DATE	TITLE
RYEH	2012/12/21	SMP-MAX JACK/JACK BULLET FEMALE TO FEMALE 4 SLOTS SMPMAX-BULLET
CHECKED BY	DATE	
JOANNE	2012/12/21	
APPROVED BY	DATE	
MATERIAL NO.	DOCUMENT NO.	SHEET NO.
SEE TABLE	SD-73420-536	1 OF 1

THIRD ANGLE PROJECTION

**molex**

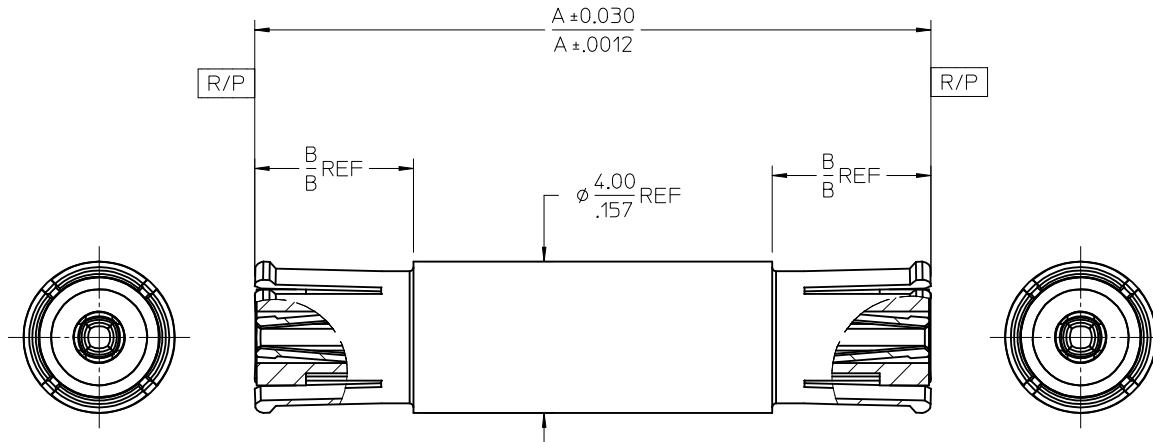
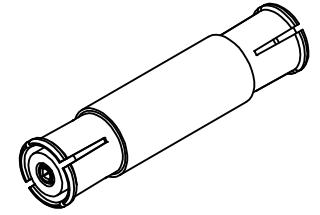
THIS DRAWING CONTAINS INFORMATION THAT IS PROPRIETARY TO MOLEX INCORPORATED AND SHOULD NOT BE USED WITHOUT WRITTEN PERMISSION

MATERIALS AND FINISHES:

BODY: BERYLLIUM COPPER  
PLATED: SEE TABLE

INSULATOR: PTFE

CONTACT: BERYLLIUM COPPER  
PLATED: GOLD (8μ-in MIN)  
OVER NICKEL PHOSPHOR (80μ-in MIN)



NOTE:

RATED VOLTAGE: 1000 Vrms

ELECTRICAL

1.07 / -30dB	1.09 / -27 dB	1.14 / -24 dB
DC - 2 GHz	2 - 4 GHz	4 - 6 GHz
VSWR / RL		

NOTE: ABOVE DATA ARE FOR INDIVIDUAL CONNECTOR.

73420-5366	TRI-M3	TRAY, 80 PCS
73420-5365	TRI-M3	TRAY, 80 PCS
73420-5364	GOLD (1μ-in MIN) OVER NICKEL PHOSPHOR (80μ-in MIN)	SMALL TRAY, 20 PCS
73420-5363	TRI-M3	SMALL TRAY, 20 PCS
73420-5362	GOLD (8μ-in MIN) OVER NICKEL PHOSPHOR (80μ-in MIN)	TRAY, 54 PCS
73420-5361	GOLD (1μ-in MIN) OVER NICKEL PHOSPHOR (80μ-in MIN)	TRAY, 80 PCS
73420-5360	TRI-M3	TRAY, 80 PCS
PART NO.	DESCRIPTION, BODY FINISH	PACKAGING

73420-5366	15.60/.614	5.00/.197
73420-5365	14.90/.587	4.20/.165
73420-5364	11.35/.447	4.20/.165
73420-5363	17.90/.705	4.20/.165
73420-5362	49.15/1.935	4.20/.165
73420-5361	11.35/.447	4.20/.165
73420-5360	17.90/.705	4.20/.165
PART NO	DIM A (MM/IN)	DIM B (MM/IN)

PS-89675-3760	ELEC/MECH PERFORMANCE
SPECIFICATION	DESCRIPTION

CHG: ADD TOLERANCE TO DIM A IN IZ ZONE. UPD MATERIALS AND FINISHES NOTE. EC NO: URF-2018-0002 DRWIN: PRAKASH01 2017/07/07 CHKD: 888 2017/07/07 APPR: AROBERTSON 2017/08/16	QUALITY SYMBOLS
	▽=0
	▽=0
	▽=0
REV	DESCRIPTION
A7	

GENERAL TOLERANCES (UNLESS SPECIFIED)	
mm	INCH
4 PLACES ± .010	± .0004
3 PLACES ± .010	± .0004
2 PLACES ± 0.25	± .010
1 PLACE ± .010	± .0004
0 PLACE ± .010	± .0004
ANGULAR ± 2 °	
DRAFT WHERE APPLICABLE MUST REMAIN WITHIN DIMENSIONS	

DIMENSION STYLE	
MM/IN	
DRAWN BY	DATE
RYEH	2012/12/21
CHECKED BY	DATE
JOANNE	2012/12/21
APPROVED BY	DATE
MATERIAL NO.	
SEE TABLE	
DOCUMENT NO.	
SD-73420-536	

SCALE	DESIGN UNITS	THIRD ANGLE PROJECTION
	METRIC	
TITLE		
SMP-MAX JACK/JACK BULLET FEMALE TO FEMALE 4 SLOTS SMPMAX-BULLET		
<b>molex</b>		
DOCUMENT NO.		SHEET NO.
SD-73420-536		1 OF 1
THIS DRAWING CONTAINS INFORMATION THAT IS PROPRIETARY TO MOLEX INCORPORATED AND SHOULD NOT BE USED WITHOUT WRITTEN PERMISSION		