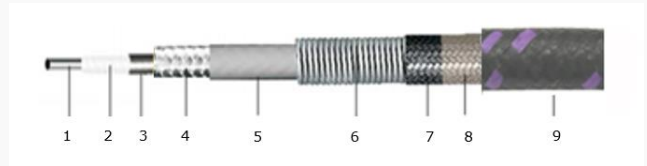
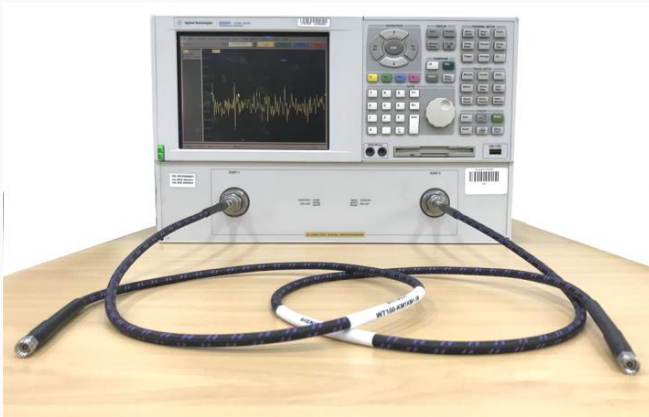


**W-Test Cable Assemblies** are complete line of high precision flexible microwave cable assemblies, specially for stable phase testing. These **WT110 Cable Assemblies** are designed by excellent microwave interconnection technologies and have **good phase and amplitude stability up to 110GHz**. It is claimed to have excellent insertion loss, high phase/amplitude stability in relation to temperature.



## Features



1. Center Conductor : Silver Plated Copper
2. Dielectric core : LD PTFE
3. Outer Conductor : Silver Plated Copper Ribbon
4. Inner Braiding : SPC
5. Jacket : FEP
6. Crush Protection Layer
7. Braiding
8. PTFE Stable Gum.
9. Braided Outer Jacket

## Specification

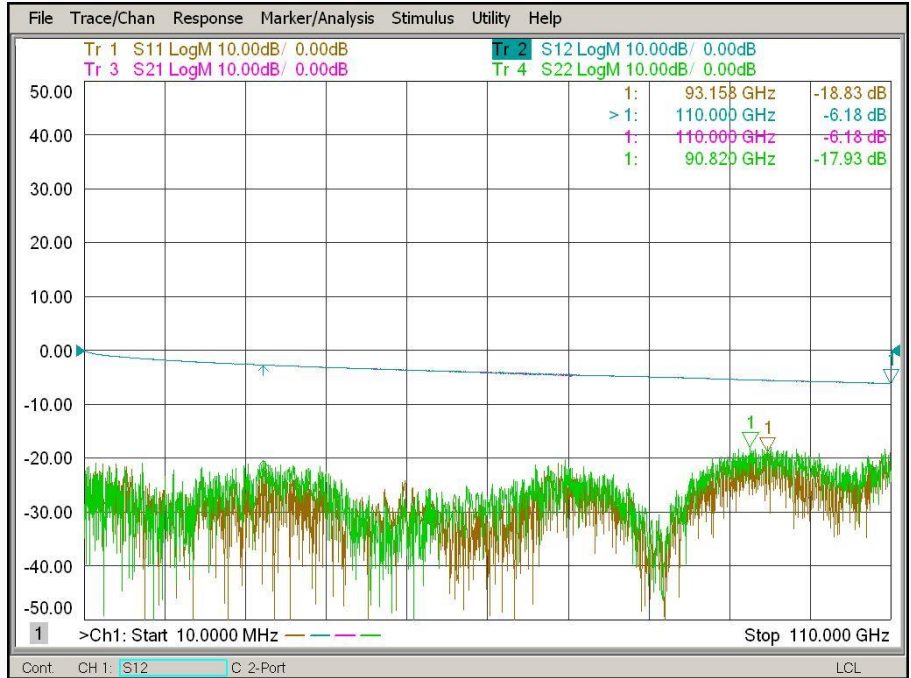
Scope	Specification	WT110 (110 GHz)
Electrical	Impedance(Ohm)	50
	Operation Freq.(GHz)	110
	VSWR(Max)	1.4
	Amplitude stability (dB) *	<+/- 0.2
	Phase stability (degree) *	<+/- 7.0
	Attenuation (dB/M)	10.0 @ 110 GHz
Physical	Velocity of propagation(%)	80
	Bending radius(Min)	20 mm
	Connector	1.0 mm
Environmental	Cable Diameter(mm)	6.4
	Operating Temperature (degree)	- 55 to +125

\* Cable (length : 1 meter) was wrapped 360 degree around  $\Phi$  30 mm mandrel

**Test Result**

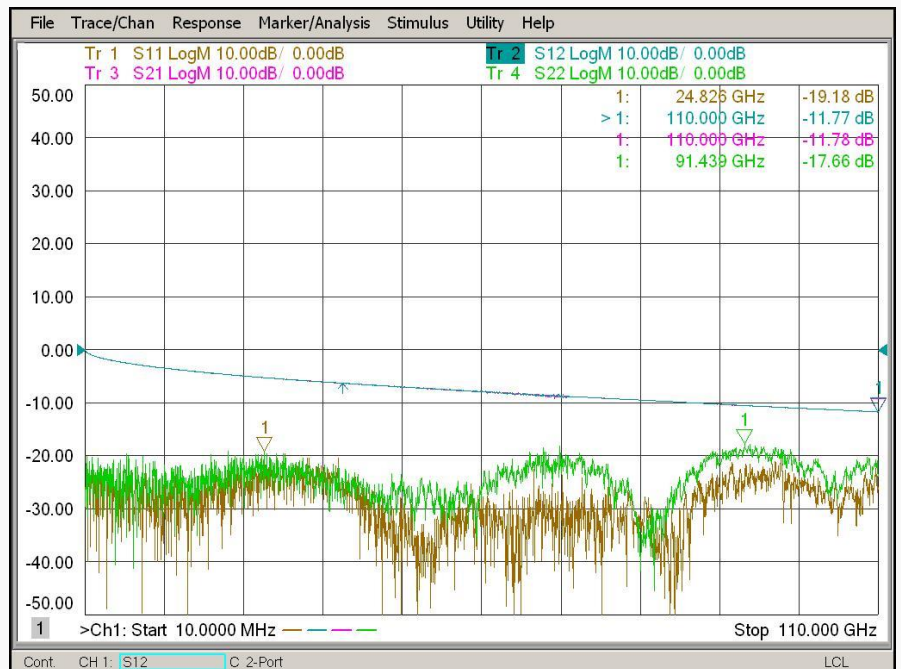
**Part No. : WT110-WM1WM1-0.5M**

- Frequency : DC to 110 GHz
- Connector : 1.0 mm (Male)
- Cable Length : 0.5 meter



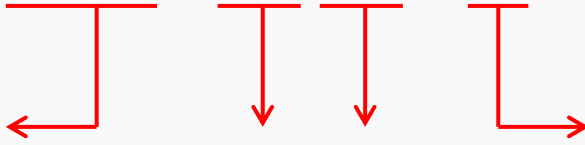
**Part No. : WT110-WM1WM1-1M**

- Frequency : DC to 110 GHz
- Connector : 1.0 mm (Male)
- Cable Length : 1 meter



■ **Selection Guide**

**WT110 – WM1WM1 – 1M**



**Cable Type**

WT110 (110 GHz)

**Connector Type**

WM1: 1.0 mm Male  
WF1 : 1.0 mm Female

**Cable Length**

Unit : Meter



■ **Revision History**

<b>Revision</b>	<b>Date</b>	<b>Changes</b>
Ver 1.0 Ver 1.1	2019-10-21 2020-05-20	Release New WT110 Cable Assembly (110 GHz) Updated Specficiation