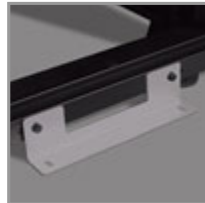


45U SmartRack Deep Rack Enclosure Cabinet with doors & side panels

MODEL NUMBER: SR45UBDP



Description

The SR45UBDP is a DEEP version of our standard 45U SmartRack. This enclosure is 1143mm deep (45") compared to the standard 1050mm deep (42"). This extra depth allows for high density equipment installations. It allows extra space for moving the cable management back as well as providing space for mounted equipment that has hot-swap, removable power supplies out the back of the enclosure.

The SR45UBDP features a massive front-to rear-ventilation capacity that meets or exceeds server manufacturer requirements. Its integrated baying tabs make it easy to combine multiple enclosures in rows for data center applications. This enclosure is also compatible with hot-aisle/cold-aisle configurations.

With its locking, reversible, removable front and rear doors, and locking, removable side panels, the SR45UBDP provides ultimate equipment safety. The side panels are half size for ease of removal and reinstallation. The split rear door design allows the enclosure to be placed closer to a wall. The SR45UBDP meets all requirements toward PCI DSS compliance.

The top panel of the SR45UBDP is vented to help remove warm air from the enclosure and draw in cool air by convection. The top panel includes ports for cable routing, and can be quickly removed without tools. To facilitate cable access, the SR45UBDP is open-bottom.

All components of the SR45UBDP are grounded to the enclosure frame. Front and rear threaded grounding points are provided for connection to the facility earth ground. The removable front and rear doors feature quick-release ground wires.

It houses 3000 lb of standard 19-inch rack equipment in 45U. To simplify deployment, the SR45UBDP comes with preinstalled casters that enable it to be easily maneuvered into the desired location, where it can be secured by adjusting the preinstalled levelers. Note: the casters are intended for minor position adjustments and are not designed for moving the enclosure over long distances.

The SR45UBDP comes with a 5-year product warranty. As part of the SmartRack family, the SR45UBDP is compatible with Tripp Lite's extensive range of rackmount accessories, enabling you to customize your solution to meet any requirement.

Features

Highlights

- Standard 24" (600mm) width for optimizing floor space
- 45" (1143mm) depth for extra space need for mounting deep equipment
- Ships fully assembled
- 3000 lb stationary / 2250 lb rolling load capacity
- Locking, removable, reversible front and rear doors; Locking, removable side panels keyed alike with doors
- Pre-installed casters and leveling feet
- Meets all enclosure requirements towards PCI DSS (Payment Card Industry Data Security Standard) Compliance

Package Includes

- SR45UBDP Rack Enclosure
- (4) Side panels
- (4) Side panel locks
- (2) Door & side panel keys
- (50) M6 screws
- (50) M6 cage nuts
- (50) M6 washers
- Owner's Manual

- Ships fully assembled for rapid deployment and roll into place on pre-installed casters allowing the enclosures to be pre-configured and rolled to the final installation location. (casters are removable)
- Front and rear sets of equipment mounting rails adjust in 1/4" increments. Adjustment is quick and convenient. The easy-view depth index ensures consistent rail placement without requiring time-consuming measurements.
- Toolless accessory mounting rails (2 rails per enclosure) include slots for quick installation of compatible PDUs and vertical cable managers. Mounting slots are arranged in an industry-standard pattern compatible with a wide variety of accessories. Each rail can accommodate two vertical PDUs or cable managers side-by-side (four items per enclosure).
- Enclosure includes mounting hardware of M6 cage nuts and 50 pieces of M6 screws
- Textured powder coat finish for tough resistance to environmental concerns such as deployment in warehouses.
- Massive front to rear ventilation capacity. 65+% open space in door perforation pattern meets or exceeds server manufacturer requirements.
- Maximum usable internal depth of 42 inches (front to rear rail).
- Weight ratings of 3000 lb stationary and 2250 lb rolling.
- Front door is locking, reversible and removable.
- Rear doors are locking and reversible. Split rear door design reduces clearance requirements for service entry allowing the enclosure to be placed closer to a wall.
- Locking removable side panels are 'half size' to make them smaller and lighter improving ease of installation and servicing. Two side panels per side (4 panels total). Side panels are keyed alike to the front and rear doors.
- Built in baying tabs allow enclosures to be combined securely in rows. Center-to-center width can be set at 600mm or 24".
- Leveling feet extend to allow enclosure to be positioned on uneven floors. Levelers are removable.
- Convenient grounding system. All components are grounded to the enclosure frame which includes multiple connections for facility ground. Front and rear doors include quick-release ground wires.
- Open bottom for cable access.
- Top panel has generous cable access holes. Panel can be removed toollessly in seconds without having to disconnect cables first.
- Included stabilizing brackets are used for shipment and can be reattached at the bottom of the enclosure frame on the inside or outside of the rack.
- Meets all enclosure requirements towards PCI DSS (Payment Card Industry Data Security Standard) Compliance
- Compatibility with airflow optimization accessories as well as cable management accessories.

Specifications



OVERVIEW	
UPC Code	037332174918
Rack Type	Enclosure
PHYSICAL	
Color	Black
Factory Preset Rack Depth (cm)	71.4
Factory Preset Rack Depth (in.)	28.125
Factory Preset Rack Depth (mm)	714
Maximum Device Depth (cm)	106.68
Maximum Device Depth (in.)	42
Maximum Device Depth (mm)	1,067
Minimum Device Depth (cm)	10.16
Minimum Device Depth (in.)	4
Minimum Device Depth (mm)	102
Rack Height	45U
Shipping Dimensions (hwd / cm)	229.36 x 66.04 x 134.62
Shipping Dimensions (hwd / in.)	90.30 x 26.00 x 53.00
Shipping Weight (kg)	176.90
Shipping Weight (lbs.)	390.00
Unit Dimensions (hwd / cm)	212.725 x 60.02 x 120.14
Unit Dimensions (hwd / in.)	83.75 x 23.63 x 47.30
Unit Weight (kg)	154.22
Unit Weight (lbs.)	340
Weight Capacity - Rolling (kg)	1,021
Weight Capacity - Rolling (lbs.)	2250
Weight Capacity - Stationary (kg)	1,361
Weight Capacity - Stationary (lbs.)	3000
SPECIAL FEATURES	
Grounding Lug	Front and Back door frames
Built-in Cable Management	Yes
CERTIFICATIONS	
Certifications	UL60950; RoHS, CE; IP20 Protection Rating
Approvals	EIA/ECA-310-E



Tripp Lite
1111 W. 35th Street
Chicago, IL 60609 USA
Telephone: 773.869.1234
www.tripplite.com

WARRANTY	
Product Warranty Period (Worldwide)	5-year limited warranty

© 2019 Tripp Lite. All rights reserved. All product and company names are trademarks or registered trademarks of their respective holders. Use of them does not imply any affiliation with or endorsement by them. Tripp Lite has a policy of continuous improvement. Specifications are subject to change without notice. Tripp Lite uses primary and third-party agencies to test its products for compliance with standards. See a list of Tripp Lite's testing agencies: <https://www.tripplite.com/products/product-certification-agencies>