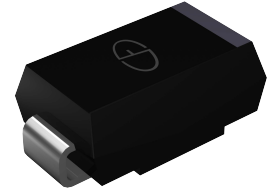


GR2A thru GR2M

Fast Recovery Surface Mount Rectifiers
 Reverse Voltage 50 to 1000 Volts Forward Current 2.0 Amperes

Features

- ◆ Glass passivated junction chip
- ◆ For surface mounted application
- ◆ Low forward voltage drop
- ◆ Low profile package
- ◆ Built-in strain relief, ideal for automated placement
- ◆ Fast switching for high efficiency
- ◆ High temperature soldering: 260°C/10 seconds at terminals
- ◆ Plastic package has Underwriters Laboratory Flammability Classification 94V-0



Package: DO-214AA (SMB)

Mechanical Data

- ◆ Case: Molded plastic
- ◆ Terminals: Solder plated
- ◆ Polarity: Indicated by cathode end
- ◆ Weight: 0.003ounce, 0.093gram



Electrical Characteristics (T_A=25°C unless otherwise noted)

Parameter	Symbols	GR2A	GR2B	GR2D	GR2G	GR2J	GR2K	GR2M	Units
Maximum Repetitive Peak Reverse Voltage	V _{RRM}	50	100	200	400	600	800	1000	Volts
Maximum RMS Voltage	V _{RMS}	35	70	140	280	420	560	700	Volts
Maximum DC Blocking Voltage	V _{DC}	50	100	200	400	600	800	1000	Volts
Maximum Average Forward Rectified Current T _L =100°C	I _{F(AV)}	2.0							Amps
Peak Forward Surge Current (8.3ms single half sine-wave superimposed on rated load) (JEDEC Method)	I _{FSM}	50.0							Amps
Maximum Instantaneous Forward Voltage at 2A	V _F	1.35							Volts
Maximum DC Reverse Current at Rated DC Blocking Voltage	@ T _A =25°C	5.0							uA
	@ T _A =125°C	200							
Typical Reverse Recovery Time at I _F =0.5A, I _R =1.0A, I _{RR} =0.25A	T _{RR}	150				250	500		nS
Typical Junction Capacitance at 4.0V, 1MHz	C _J	50							pF
Typical Thermal Resistance(Note 1)	R _{THJA}	55							°C/W
	R _{THJL}	18							
Operating Junction Temperature Range	T _J	-55 to +150							°C
Storage Temperature Range	T _{STG}	-55 to +150							°C

Notes: 1. Thermal resistance from junction to ambient and from junction to lead frame P.C.B. mounted on 0.3×0.3"(8.0×8.0mm) copper pad areas.

GR2A thru GR2M

Fast Recovery Surface Mount Rectifiers

Reverse Voltage 50 to 1000 Volts Forward Current 2.0 Amperes

Typical Electrical Characteristic Curves

FIG.1- MAXIMUM FORWARD CURRENT DERATING CURVE

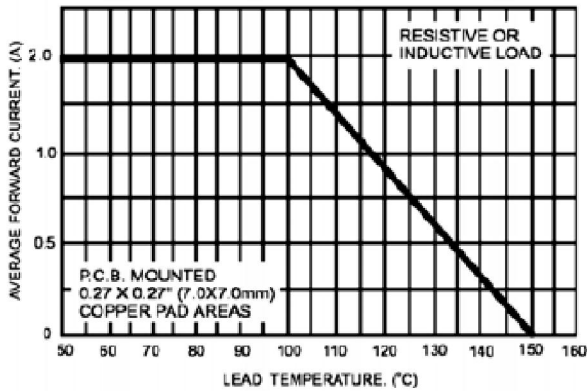


FIG.2- MAXIMUM NON-REPETITIVE PEAK FORWARD SURGE CURRENT

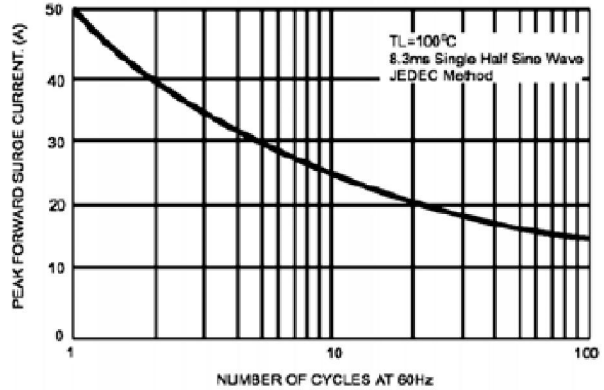


FIG.3- TYPICAL INSTANTANEOUS FORWARD CHARACTERISTICS

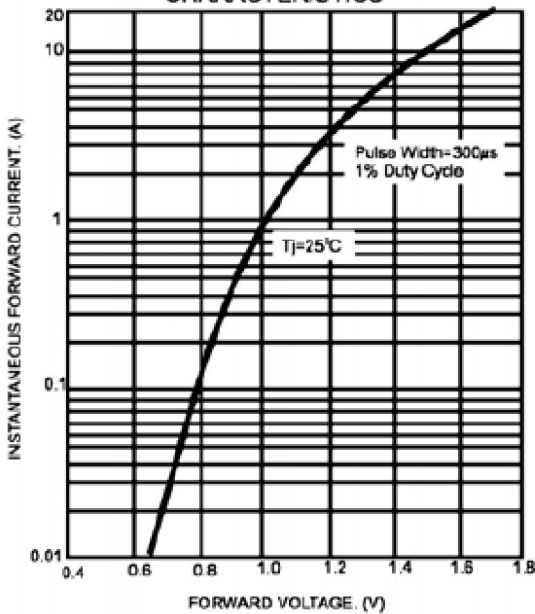


FIG.4- TYPICAL REVERSE CHARACTERISTICS

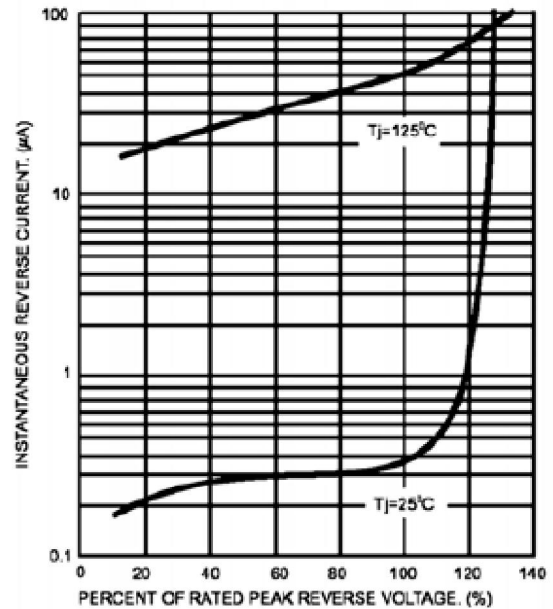
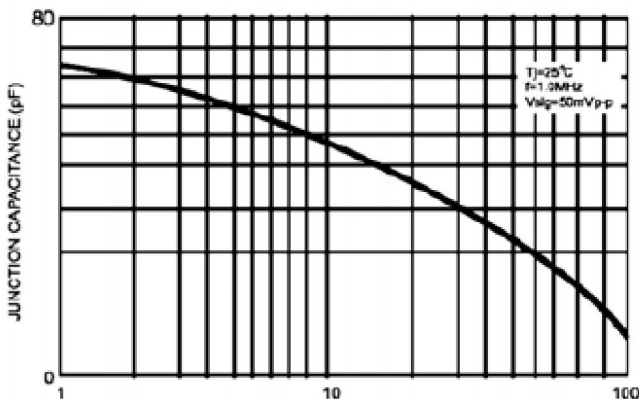


FIG.5- TYPICAL JUNCTION CAPACITANCE



GR2A thru GR2M

Fast Recovery Surface Mount Rectifiers

Reverse Voltage 50 to 1000 Volts Forward Current 2.0 Amperes

Package Outline Dimensions

DO-214AA (SMB)

Dimensions in inches and (millimeters)

