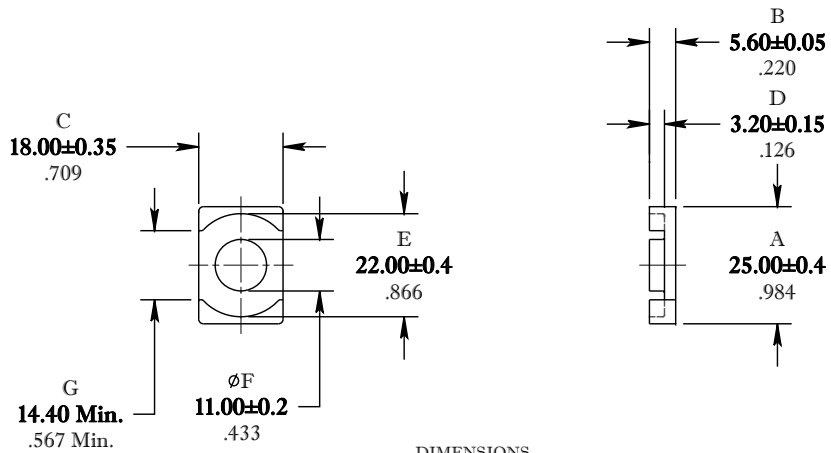


\*\* Not all features are shown in this drawing. For more detailed information, please contact your Fair-Rite representative.

UNCONTROLLED ~CATALOG~ DRAWING

SIZE	PART NO.	REV.
B	9567250602	~




DIMENSIONS  
**BOLD NUMBERS ARE IN MILLIMETERS**  
 LIGHT NUMBERS ARE IN INCHES

ELECTRICAL SPECIFICATIONS						
$\Sigma l/A(\text{mm}^{-1})$	$l_e$ (mm)	$A_e$ (mm <sup>2</sup> )	$A_{\text{Min}}$ (mm <sup>2</sup> )	$V_e$ (mm <sup>3</sup> )	$A_L$ (nH) @10kHz <10gauss	$Q$ @ 50MHz <1gauss
0.352	32.8	93.3	82.8	3060	110 Min.	> 50
MATE PAIR: CLAMPING FORCE = 10 lbs.						

POWER LOSS @ 25°C

f = 5 MHz, 100g P.L. < 0.37 Watts  
 f = 10 MHz, 100g P.L. < 1.05 Watts

 <b>FAIR-RITE PRODUCTS CORP.</b>						
TITLE "EQ" CORE						
DRAWN BY D. FOOTE	DATE 4/12/2019	SIZE	PART NO.		REV.	
CHKD BY		B	9567250602		~	
APPRVD BY		SCALE	NONE	SHEET	1 of 1	

FR# 67