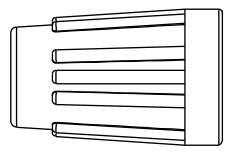
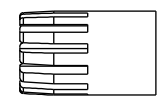


THIS DOCUMENT IS SUBJECT TO CHANGE WITHOUT NOTICE. IT IS CONFIDENTIAL AND A PROPERTY OF Amphenol LTW. DISCLOSURE TO THIRD PARTY HAS TO BE AUTHORIZED BY Amphenol LTW.

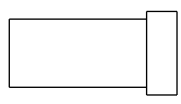
| | | | | |
|------|---------|------|------|-------------|
| REV. | ECN NO. | DATE | SIGN | DESCRIPTION |
| | | | | |



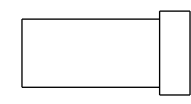
7 Sealing Nut



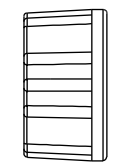
6 Clamp Ring



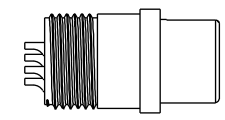
5 Seals B2



4 Seals B1



3 Nut



2 Connector



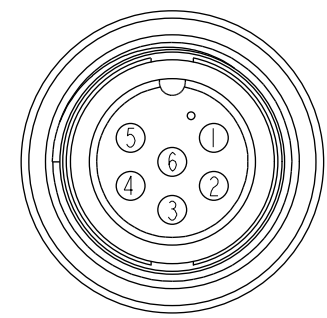
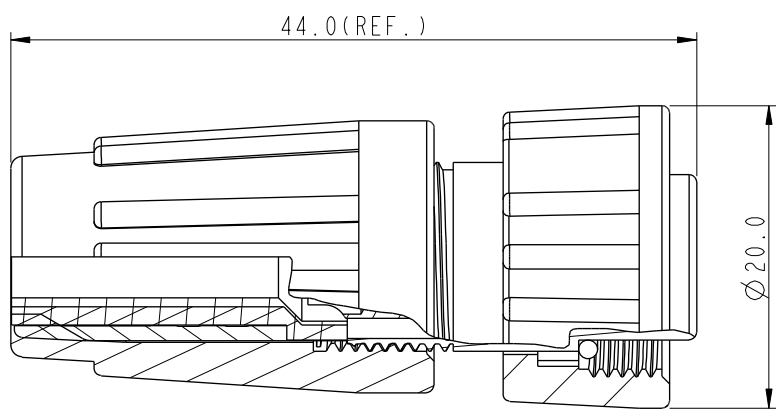
1 O-Ring

ALTW
DCC. DEPT.
CONFIDENTIAL
2012-04-03
ISSUED

ALTW
CONFIDENTIAL
2012-03-23
R&D DEPT.

Note:

- * Seals B1 for Cable OD: $\varnothing 4.5\text{mm} - \varnothing 6.5\text{mm}$
(防水墊圈B1線徑: $\varnothing 4.5\text{mm} - \varnothing 6.5\text{mm}$)
- * Seals B2 for Cable OD: $\varnothing 3.5\text{mm} - \varnothing 5.3\text{mm}$
(防水墊圈B2線徑: $\varnothing 3.5\text{mm} - \varnothing 5.3\text{mm}$)
- * One Set Unassembled in One PE Bag
(每一組未組裝, 放置於一個PE袋, 並封口)
- * CC Important Dimension.
- * Waterproof Rate : IP66
- * Ring: Black, EPDM
- * Housing: Black, Nylon+GF
- * Pin: Copper Alloy, Gold Plated
- * Screw Nut: Black, Nylon+GF
- * Seals: Black, EPDM
- * Clamping Ring: Black, Nylon
- * Sealing Nut: Black, Nylon
- * PE Bag: 90mm*85mm



Pin Assignments
Front View 前視圖

| | | | | | | | |
|--|--|--|----------------|--|------------------------------|-----------------------|--------------------|
| UNIT: mm | | TITLE Standard, Assy Lock 6Pin F Conn F Pin | | | ITEM NO. BD-06BFFA-SL6001 | DRAWN BY SamChang | DATE 2012-03-23 |
| | | SCALE 1:1 | SIZE A4 | SHEET 1 OF 1 | DWG NO. BD-06BFFA-SL6001 | CHECKED BY Jeffrey | DATE 2012-04-03 |
| | | REV. A | WC-REV. A.2 | CC : Inspection item | CUSTOMER ALTW | APPROVED BY Lion | DATE 2012-04-03 |
| <h2 style="text-align: center;">Amphenol LTW</h2> <p style="text-align: center;">安費諾亮泰企業股份有限公司</p> | | | | <p style="text-align: right;">8 FMM10702-01-02A1</p> | | | |