

6

5

4

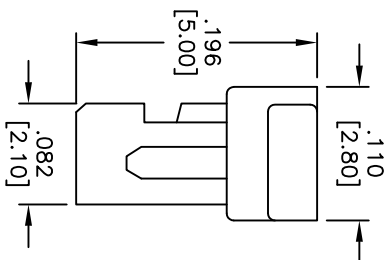
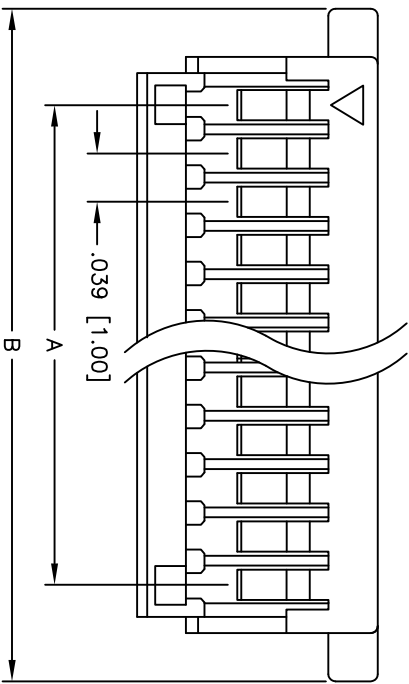
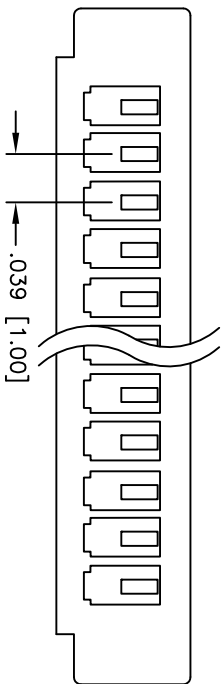
3

2

1

APPROVED: _____
DATE: _____ TITLE: _____

Rev	AWO #	Description	Date	Appr
-		RELEASED	01/17/07	
A		REVISED COLOR	9/24/10	
B		REVISED SPEC.	9/26/13	AV/SL



POLES	DIMENSIONS INCHES [mm]	
	A	B
2	.039 [1.00]	.197 [5.00]
3	.079 [2.00]	.236 [6.00]
4	.118 [3.00]	.276 [7.00]
5	.157 [4.00]	.315 [8.00]
6	.197 [5.00]	.354 [9.00]
7	.236 [6.00]	.394 [10.00]
8	.276 [7.00]	.433 [11.00]
9	.315 [8.00]	.472 [12.00]
10	.354 [9.00]	.512 [13.00]
11	.394 [10.00]	.551 [14.00]
12	.433 [11.00]	.591 [15.00]
13	.472 [12.00]	.630 [16.00]
14	.512 [13.00]	.669 [17.00]
15	.551 [14.00]	.709 [18.00]
16	.591 [15.00]	.748 [19.00]
17	.630 [16.00]	.787 [20.00]
18	.669 [17.00]	.827 [21.00]
19	.709 [18.00]	.866 [22.00]
20	.748 [19.00]	.906 [23.00]

SPECIFICATIONS:

Material: Nylon 66, rated UL 94V-0
 Insulator color: White
 Electrical:
 Operating voltage: 50 VAC max
 Current rating: 1 Amp AC, DC max
 Insulation resistance: 100 Mohms min @ 500 VDC
 Dielectric withstanding voltage: 500 VAC for 1 minute
 Contact resistance: 20 mohms max.
 Temperature Rating:
 Operating temperature: -25°C to +85°C
 Environmental:
 Lead free, RoHS compliant



ADAM TECH

909 Rahway Avenue, Union, NJ 07083
 Phone: 908-687-5000 Fax: 908-687-5710

1.0mm CRIMP HOUSING

UNLESS OTHERWISE SPECIFIED ALL DIMENSIONS ARE INCHES [MM] TOLERANCES: EXCEPT AS NOTED	
INCHES	HOLES
.X ± .10	ØX ± .10
.XX ± .020	ØXX ± .015
.XXX ± .015	ØXXX ± .010
APPROVALS	DATE
DRAWN	BW
CHECKED	
APPROVED	

TITLE		PART NO.		REV.
1.0mm CRIMP HOUSING		1CH-A-XX		B
SIZE	SCALE	WTS	SHEET	1 OF 1
X	INTS			

A

B

C

D

A

B

C

D

6

5

4

3

2

1