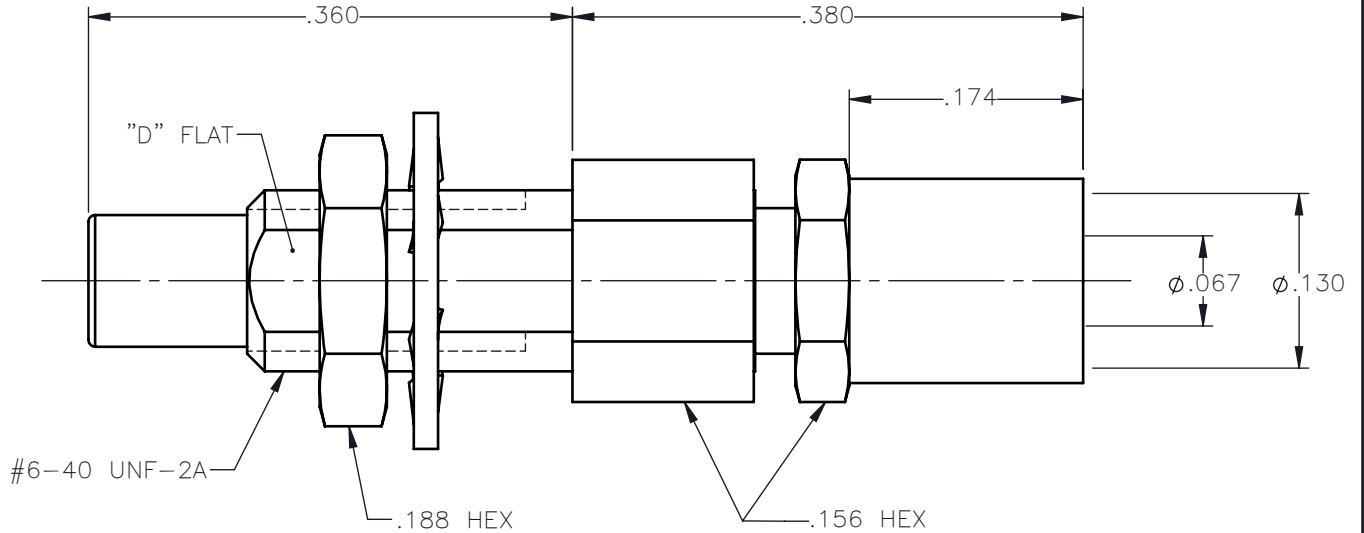
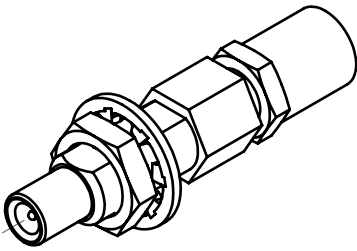


REVISIONS			
REV.	DESCRIPTION	DATE	APPROVED
A	INITAL RELEASE	06/04/15	N.D.






NOTES:

MATERIALS:

1. BODY & CONTACT = BERYLLIUM COPPER PER ASTM B196, ALLOY C17300, TEMPER TD04.
2. INSULATORS = VIRGIN WHITE TEFLON PER ASTM D1710, GRADE 1, TYPE I, CLASS "B".
3. CRIMP NUT & NUT = BRASS PER ASTM B16, ALLOY C36000, TEMPER H02.
4. LOCKWASHER = PHOSPHOR BRONZE PER ASTM B139, COPPER ALLOY C53400, TEMPER H04.
5. CRIMP SLEEVE = SEAMLESS LOWLEAD BRASS TUBE, ALLOY 330, SOFT ANNEAL TEMPER, .025/.060 GRAIN SIZE OR SEAMLESS COPPER TUBE PER ASTM B75, TYPE C12000, TEMPER: LIGHT ANNEAL O50 EXCEPT YIELD STRENGTH.
6. SHRINK TUBE = RNF100, YELLOW (NOT SHOWN).

FINISHES:

1. CONTACT = GOLD PLATE PER ASTM B488-01, TYPE II, 50 $\mu$ in MIN, GRADE C, OVER 100 TO 200 $\mu$ in STRESS FREE SULFAMATE NICKEL PER QQ-N-290.
2. ALL OTHER METAL PARTS = GOLD PLATE PER ASTM B488-01, TYPE II, 30 $\mu$ in MIN, GRADE C OVER 100 TO 200 $\mu$ in COPPER STRIKE PER MIL-C-14550.

UNLESS OTHERWISE SPECIFIED DIMENSIONS ARE IN INCHES TOLERANCES ON	DWN:	DATE	 Property of Radiall This document cannot be reproduced or communicated to a third party without prior written permission of RADIALL.	
	N.D.	06/04/15		
DECIMAL	ANGLE	CHKD:	DATE	<b>SSMC STRAIGHT JACK          BULKHEAD CRIMP TYPE          FOR RG-316DS &amp; SIMILAR CABLES</b>
		D.N.	06/04/15	
		APVD:	DATE	
		J.S.	06/04/15	SIZE: A FSCM NO.: 19505 DWG NO.: 7003-1572-019 REV: A
REFERENCE:	MATERIALS AND FINISHES:		SCALE: 7:1	THIRD ANGLE PROJECTION 
ORIGINATED: N.D. DATE: 06/04/15	SEE NOTES		SHEET 1 OF 1	

7003-1572-019