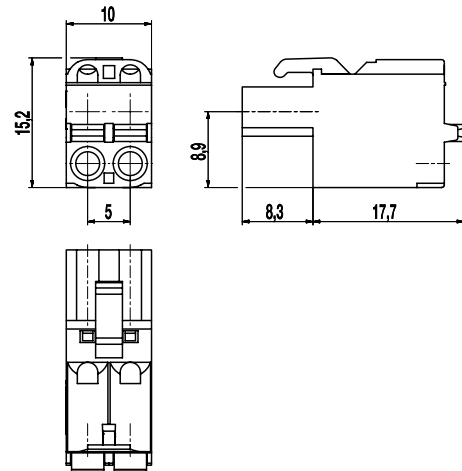
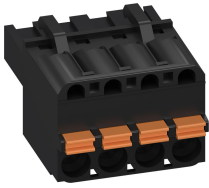


120-FEP-311

Plug connector
Screwless connection, Push-In



GENERAL INFORMATION

Pitch	5 mm
No. of poles	2 - 24
Usable with	120-ME-211, 120-ME-221

TECHNICAL DATA

Clamping Range	<i>solid / stranded / AWG</i> 0,2 - 4,0 mm ² / 0,2 - 4,0 mm ² / 24 - 12 AWG
Rated Cross Section	2,5 mm ² / 14 AWG
Wire Stripping Length	max. 10 mm
Rated Impulse Voltage	4 kV
Rated Insulation Voltage	250 V acc. EN 61984
Rated Current	12 A

APPROVALS

	Current [A]	Voltage [V]	Group	AWG	[Nm]
	16	300	B, D	30-12	

MATERIAL

Moulding	PA V0, housing black, pusher orange
Insulating Group	I
Temperature Range	-40°C up to 130°C
Terminal body	copper alloy, tin-plated
Spring	Steel

OPTIONS / ACCESSORIES

- Coding elements

CONFIGURATIONS

Poles	Item	Article number	Length (L)	Packaging	PU
2	120-FEP-311/02	10.808.932	10 mm	Box	250
3	120-FEP-311/03	10.808.933	15 mm	Box	250
4	120-FEP-311/04	10.808.934	20 mm	Box	250
5	120-FEP-311/05	10.808.935	25 mm	Box	
6	120-FEP-311/06	10.808.936	30 mm	Box	
7	120-FEP-311/07	10.808.937	35 mm	Box	
8	120-FEP-311/08	10.808.938	40 mm	Box	
9	120-FEP-311/09	10.808.939	45 mm	Box	
10	120-FEP-311/10	10.808.940	50 mm	Box	100
11	120-FEP-311/11	10.808.941	55 mm	Box	
12	120-FEP-311/12	10.808.942	60 mm	Box	

further number of poles on request

