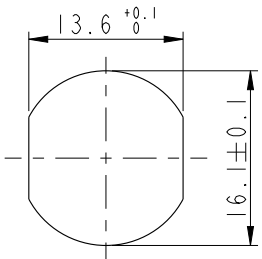
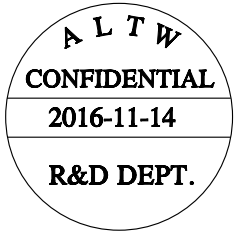
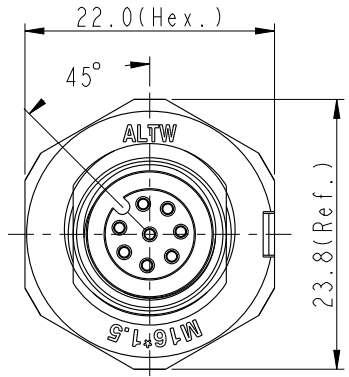
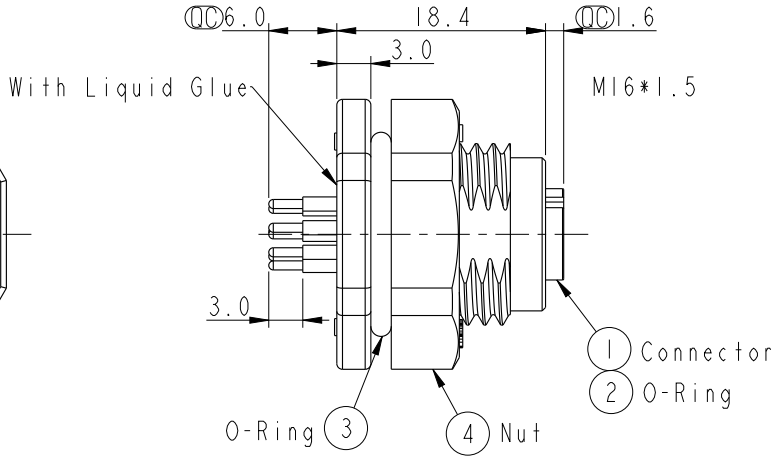
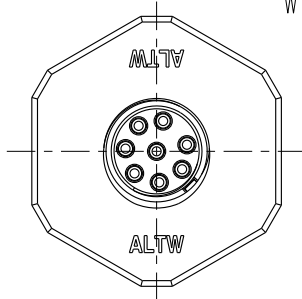


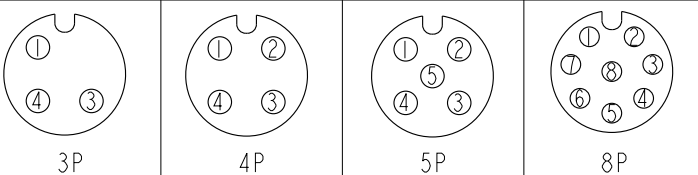
REV.	ECN NO.	DATE	SIGN	DESCRIPTION



Recommended Panel Cut-Out



- Note:
- * \varnothing Important Dimension To Check
 - * Waterproof Rate: IP68 (水深1米, 24hrs)
 - * Connector: Nylon+GF, 94V-0, Black
 - * Female Pin: Copper Alloy, Gold Plated
 - * Shield: Nylon+GF, 94V-0, Black
 - * Nut: Nylon+GF, 94V-0, Black
 - * O-Ring (Inner): Silicone, Gray, 94V-0
 - * O-Ring (Outer): Silicone, Gray, 94V-0
 - * Rated Voltage: 3 & 4Pin 250V dc. or ac.
5Pin 60V dc. or ac.
8Pin 30V dc. or ac.
 - * Rated Current: 3-5Pin 4A
8Pin 2A
 - * For panel Thickness Max 4.0mm



Pin Assignment Front View

M12A-03PMMS-SF8002
M12A-04PMMS-SF8002
M12A-05PMMS-SF8002
M12A-08PMMS-SF8002

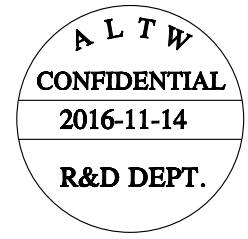
Item No.

UNIT: mm		TITLE: M12 A-Code Female Conn. PCB Front Type (Plastic)			ITEM NO.	DRAWN BY: Yulong_wang	DATE: 2016-11-14
		SCALE: 3:2	SIZE: A4	SHEET: 1 OF 2			
TOLERANCE		SCALE: 3:2	SIZE: A4	SHEET: 1 OF 2	DWG NO: MSAP-XXPFFP-SF8002	CHECKED BY: Jinhai	DATE: 2016-11-14
.X ±0.25		REV: A	WC-REV: A.2	\varnothing : Inspection item	CUSTOMER: ALTW	APPROVED BY: Jerry	DATE: 2016-11-14
.XX ±0.1							
.XXX ±0.05							
ANGLES ±1°							

Amphenol LTW
安費諾亮泰企業股份有限公司

THIS DOCUMENT IS SUBJECT TO CHANGE WITHOUT NOTICE. IT IS CONFIDENTIAL AND A PROPERTY OF AMPHENOL LTW. DISCLOSURE TO THIRD PARTY HAS TO BE AUTHORIZED BY AMPHENOL LTW.

THIS DOCUMENT IS SUBJECT TO CHANGE WITHOUT NOTICE. IT IS CONFIDENTIAL AND A PROPERTY OF Amphenol LTW. DISCLOSURE TO THIRD PARTY HAS TO BE AUTHORIZED BY Amphenol LTW.

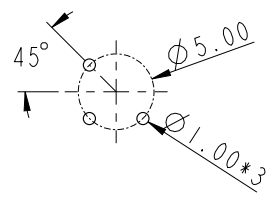


M SAP - XX P F F P - S F 8 002

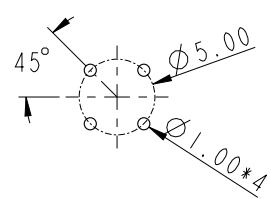
SAP: A-Code Plastic
 03: 3Pin
 04: 4Pin
 05: 5Pin
 08: 8Pin

P: Panel (板端)
 F: Female Connector (母座)

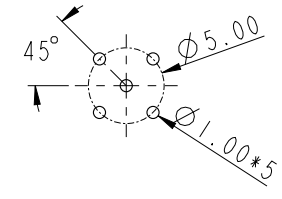
002: M16*1.5
 8: IP68 (防水等級68)
 F: Front Fasten (前鎖式/Enclosure Rear Mount)
 S: Screw (螺紋式)
 P: 180° PCB THT/DIP Type (180° 基板插件式)
 F: Female Pin (母Pin)



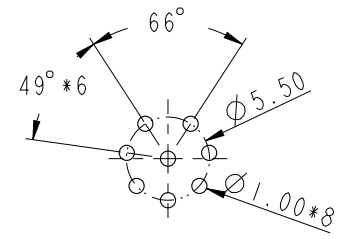
PCB Layout (3P)



PCB Layout (4P)



PCB Layout (5P)



PCB Layout (8P)

UNIT: mm		
TOLERANCE	.X ±0.25	
.XX ±0.1		
.XXX ±0.05		
ANGLES	±1°	

TITLE M12 A-Code Female Conn. PCB Front Type (Plastic)			
SCALE 3:2	SIZE A4	SHEET 2 OF 2	
REV. 01	WC-REV. A.2	QC: Inspection item	

Amphenol LTW
 安費諾亮泰企業股份有限公司

ITEM NO	DRAWN BY Yulong_wang	DATE 2016-11-14
DWG NO MSAP-XXPFFP-SF8002	CHECKED BY Jinhai	DATE 2016-11-14
CUSTOMER ALTW	APPROVED BY Jerry	DATE 2016-11-14

DATE 2016-11-14
DATE 2016-11-14
DATE 2016-11-14