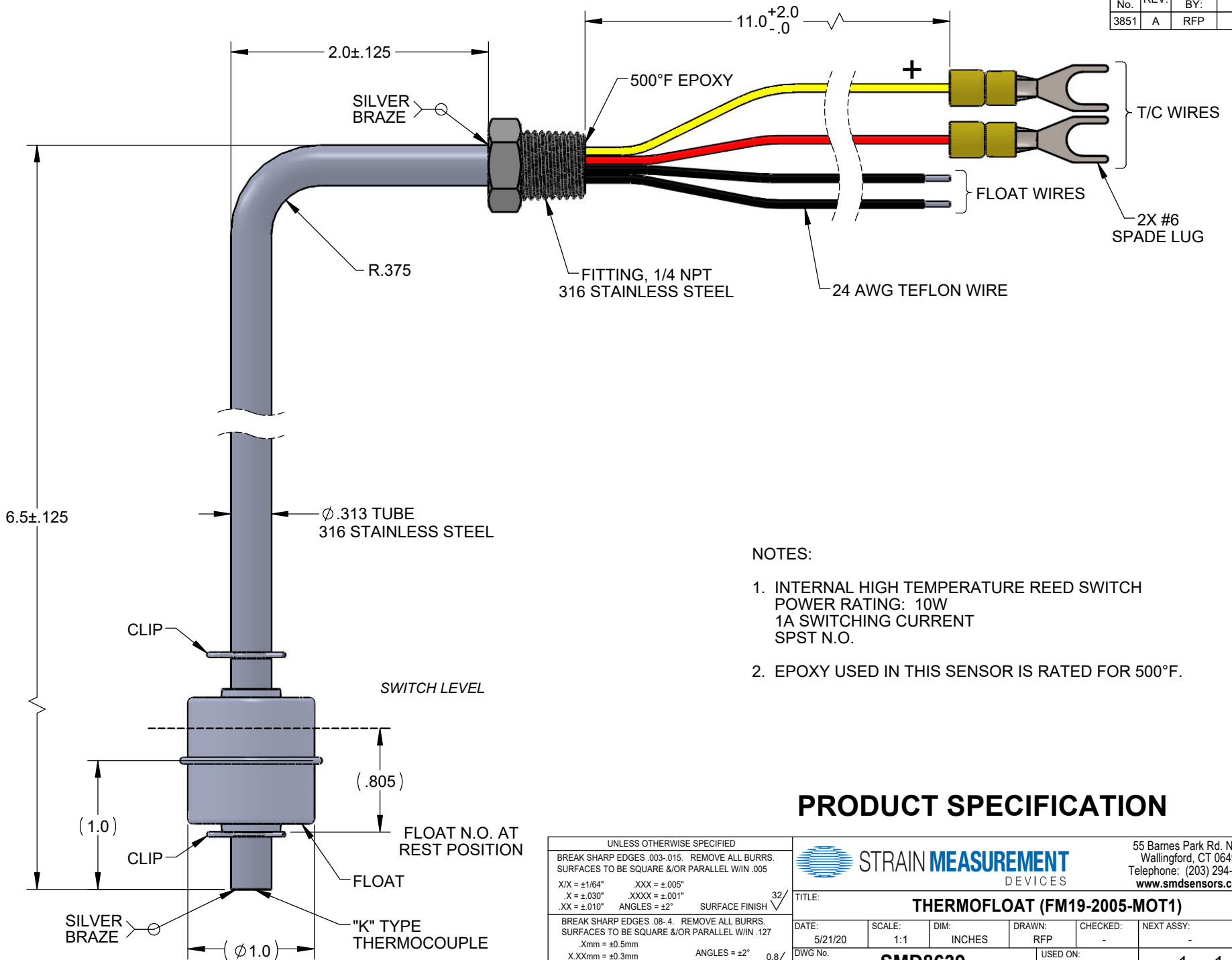


REVISIONS			
MOD No.	REV.	DRAWN BY:	DATE
3851	A	RFP	



NOTES:

- INTERNAL HIGH TEMPERATURE REED SWITCH
POWER RATING: 10W
1A SWITCHING CURRENT
SPST N.O.
- EPOXY USED IN THIS SENSOR IS RATED FOR 500°F.

PRODUCT SPECIFICATION

UNLESS OTHERWISE SPECIFIED	
BREAK SHARP EDGES .003-.015. REMOVE ALL BURRS. SURFACES TO BE SQUARE &/OR PARALLEL W/IN .005	
X/X = ±1/64"	.XXX = ±.005"
.X = ±.030"	.XXXX = ±.001"
.XX = ±.010"	ANGLES = ±2°
SURFACE FINISH 32/	
BREAK SHARP EDGES .08-.4. REMOVE ALL BURRS. SURFACES TO BE SQUARE &/OR PARALLEL W/IN .127	
.Xmm = ±0.5mm	ANGLES = ±2°
X.XXmm = ±0.3mm	SURFACE FINISH 0.8/
X.XXXmm = ±0.15mm	

		55 Barnes Park Rd. North Wallingford, CT 06492 Telephone: (203) 294-5800 www.smdsensors.com	
TITLE: THERMOFLOAT (FM19-2005-MOT1)			
DATE: 5/21/20	SCALE: 1:1	DIM: INCHES	DRAWN: RFP
DWG No. SMD8639	CHECKED: -	NEXT ASSY: -	REV: A
USED ON: -		SHT 1 OF 1	