

Han 8D FEMALE INSERT CRIMP

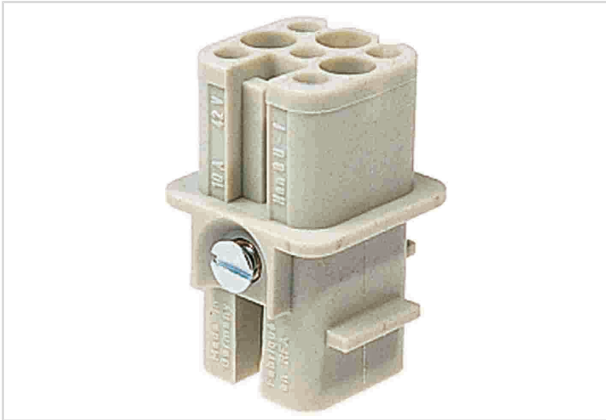


Image is for illustration purposes only. Please refer to product description.

Part number	09 36 008 3101
Specification	Han 8D FEMALE INSERT CRIMP
HARTING eCatalogue	https://b2b.harting.com/09360083101

Identification

Category	Inserts
Series	Han D®

Version

Termination method	Crimp termination
Gender	Female
Size	3 A
Number of contacts	8
Details	Please order crimp contacts separately. for thermoplastics and metal hoods/housings

Technical characteristics

Conductor cross-section	0.14 ... 2.5 mm ²
Rated current	10 A
Rated voltage	50 V
Rated voltage	50 V AC 120 V DC
Rated impulse voltage	0.8 kV
Pollution degree	3
Rated voltage acc. to UL	50 V
Rated voltage acc. to CSA	50 V
Insulation resistance	>10 ¹⁰ Ω
Limiting temperature	-40 ... +125 °C



Pushing Performance

Technical characteristics

Mating cycles	≥500
---------------	------

Material properties

Material (insert)	Polyamide (PA)
Colour (insert)	RAL 7032 (pebble grey)
Material flammability class acc. to UL 94	HB
RoHS	compliant with exemption
RoHS exemptions	6(c): Copper alloy containing up to 4 % lead by weight
ELV status	compliant with exemption
China RoHS	50
REACH Annex XVII substances	No
REACH ANNEX XIV substances	No
REACH SVHC substances	Yes
REACH SVHC substances	Lead
ECHA SCIP number	5dbb3851-b94e-4e88-97a1-571845975242
California Proposition 65 substances	Yes
California Proposition 65 substances	Nickel Lead

Specifications and approvals

Specifications	EN 60664-1 IEC 61984 EN 175301-801
Approvals	DNV GL
UL / CSA	UL 1977 ECBT2.E235076 CSA-C22.2 No. 182.3 ECBT8.E235076

Commercial data

Packaging size	10
Net weight	7.8 g
Country of origin	Germany
European customs tariff number	85389099
eCl@ss	27440205 Contact insert for industrial connectors