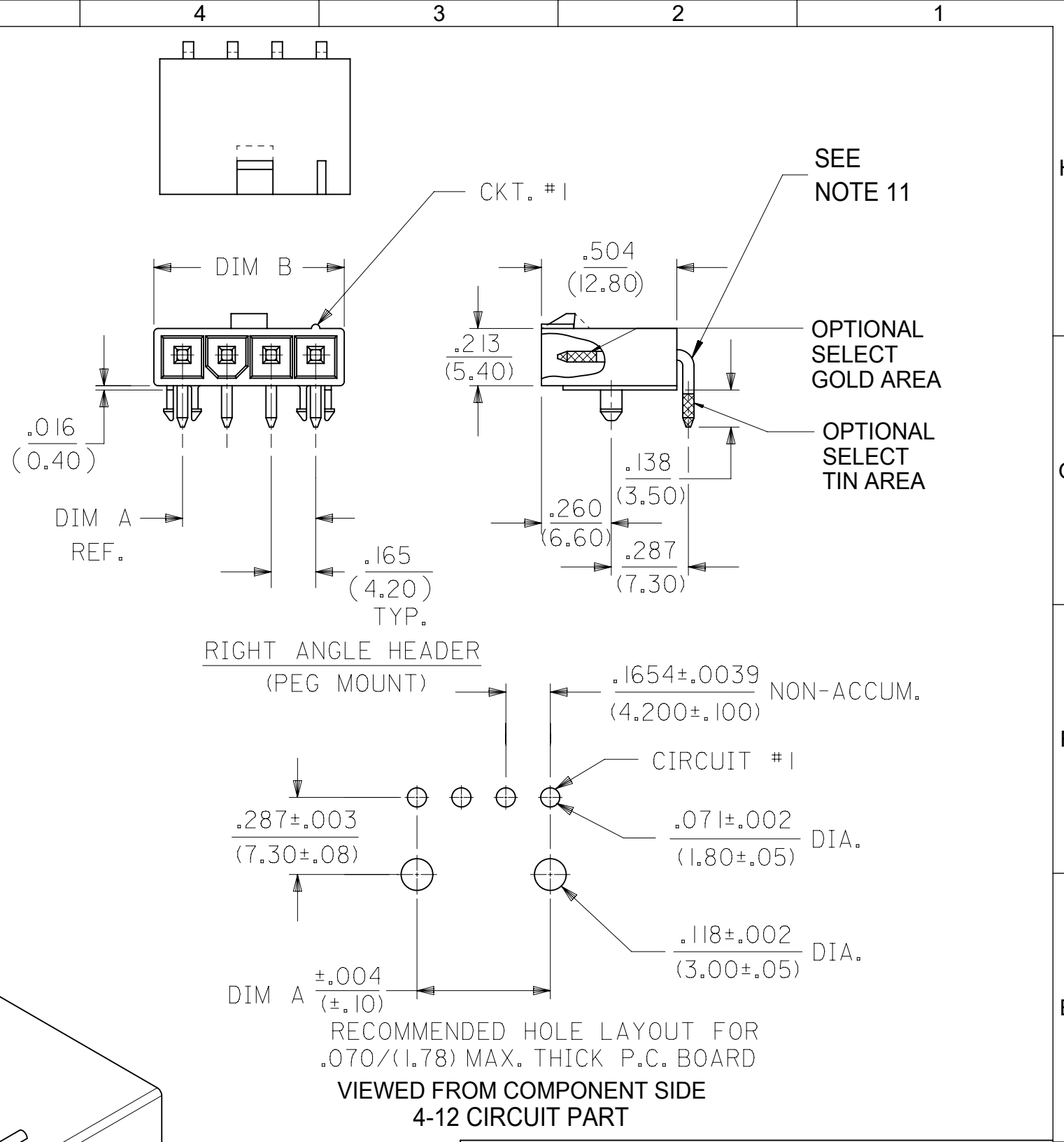
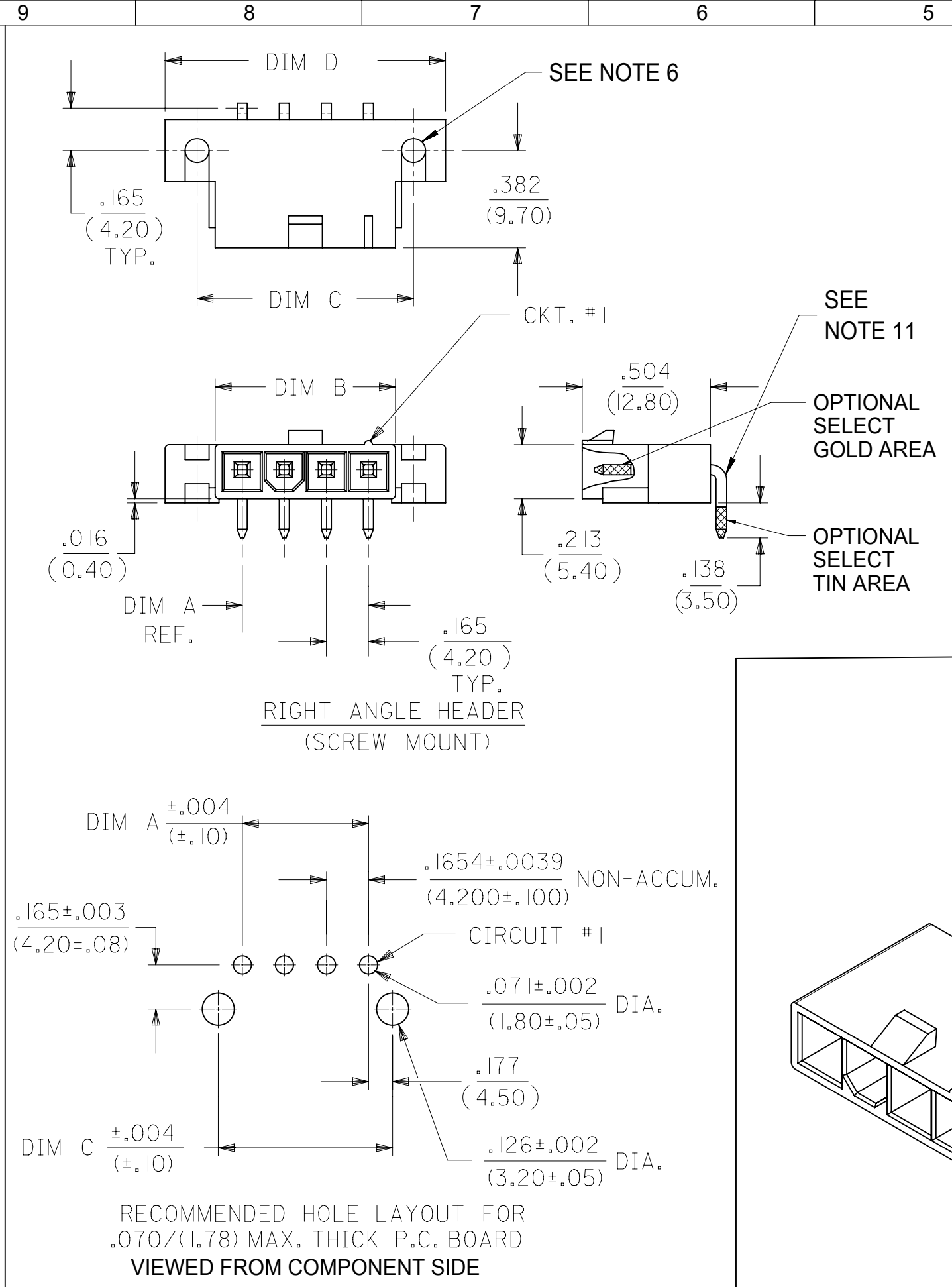


| CKT SIZE | DIM A            | DIM B            | DIM C            | DIM D            |
|----------|------------------|------------------|------------------|------------------|
| 2        | .165<br>(4.20)   | .378<br>(9.60)   | .520<br>(13.20)  | .772<br>(19.60)  |
| 4        | .496<br>(12.60)  | .709<br>(18.00)  | .850<br>(21.60)  | 1.102<br>(28.00) |
| 5        | .661<br>(16.80)  | .874<br>(22.20)  | 1.016<br>(25.80) | 1.268<br>(32.20) |
| 6        | .827<br>(21.00)  | 1.039<br>(26.40) | 1.181<br>(30.00) | 1.433<br>(36.40) |
| 7        | .992<br>(25.20)  | 1.205<br>(30.60) | 1.346<br>(34.20) | 1.598<br>(40.60) |
| 8        | 1.157<br>(29.40) | 1.370<br>(34.80) | 1.512<br>(38.40) | 1.764<br>(44.80) |
| 9        | 1.323<br>(33.60) | 1.535<br>(39.00) | 1.677<br>(42.60) | 1.929<br>(49.00) |
| 10       | 1.488<br>(37.80) | 1.701<br>(43.20) | 1.843<br>(46.80) | 2.094<br>(53.20) |
| 11       | 1.654<br>(42.00) | 1.866<br>(47.40) | 2.008<br>(51.00) | 2.260<br>(57.40) |
| 12       | 1.819<br>(46.20) | 2.031<br>(51.60) | 2.173<br>(55.20) | 2.425<br>(61.60) |

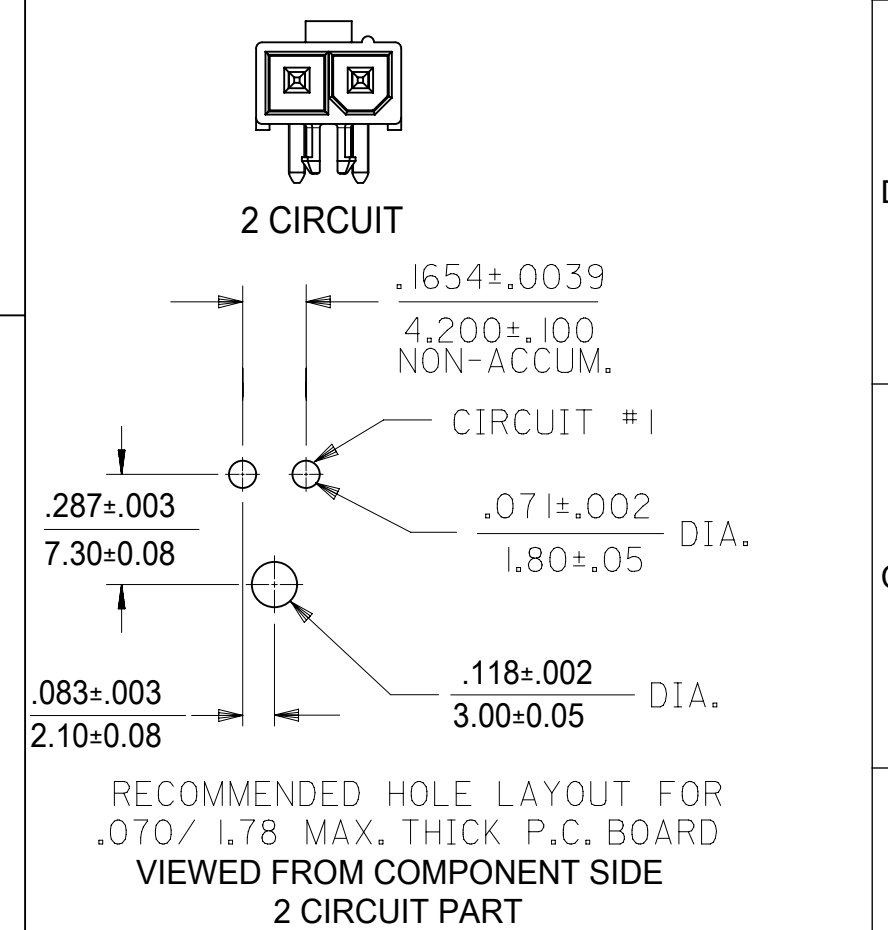
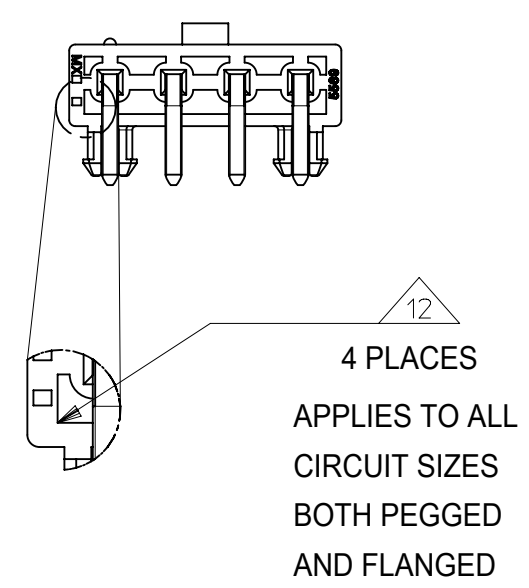
**NOTES:**

- HOUSING MATERIAL:  
 "BLANK" = NYLON 6/6, U.L. 94V-2, COLOR: NATURAL.  
 210 = NYLON 6/6, U.L. 94V-0, COLOR: NATURAL.  
 BL = NYLON 6/6, U.L. 94V-2, COLOR: BLACK.  
 400 = NYLON 6/6, U.L. 94V-O. COLOR: BLACK.  
 TERMINAL MATERIAL: BRASS, ALLOY.
- TERMINAL PLATING:  
 G, GS - .000030/(.00076) MIN. SELECT GOLD AND .000100/(.00127) MIN. SELECT MATTE TIN OVER .000050/(.00127) MIN NICKEL OVERALL.  
 G2, GS2 - .00015/(.00038) MIN. SELECT GOLD AND .000100/(.00254) MIN. SELECT MATTE TIN OVER .000050/(.00127) MIN. NICKEL OVERALL.  
 RM - .000060/(.00152) MIN REFLOWED MATTE TIN OVER .000050/(.00127) MIN. NICKEL OVERALL.  
 BLANK, S, MS - .000100/(.00254) MIN. MATTE TIN OVER .000050/(.00127) MIN. NICKEL OVERALL.
- PRODUCT SPECIFICATION: PS-5556-001
- PACKAGING SPECIFICATION : BULK PACK PER PK-5569-002 TRAY PACK PER PK-5569-005
- PART MATES WITH MOLEX RECEPTACLE #5557.
- PART IS DESIGNED FOR USE WITH #4 OR M3 SELF TAPPING SCREWS.
- DISCOLORATION IN THE BANDOLIER CARRIER AREA OF THE PIN IS INHERENT TO THE PLATING PROCESS AND IS DUE TO THE MASKING EFFECT OF THE CARRIER. THIS DISCOLORATION IS IN A NON-FUNCTIONAL AREA OF THE PIN AND WILL NOT AFFECT THE PERFORMANCE OF THE HEADER ASSEMBLY.
- CONNECTORS ARE NOT TO BE MATED OR UNMATED WHILE CIRCUIT ARE LIVE.
- PARTS NOT DESIGNED FOR CURRENT SHARING.
- PART CONFORMS TO CLASS "B" REQUIREMENTS OF COSMETIC SPECIFICATION PS-45499-002.
- FORMING MARKS ON PINS ARE ACCEPTABLE
- CORNER CORE-OUTS ARE OPTIONAL AND MAY OR MAY NOT BE PRESENT.
- TEXT ON PART IS FOR REFERENCE ONLY. TEXT AND TEXT LOCATION MAY VARY DEPENDING ON PART NUMBER AND/OR TOOL.



**LEGEND:**

- 5569 - \*\* A \* \* - \*
- CKT. SIZE \_\_\_\_\_
- (02-12)
- ASSEMBLY \_\_\_\_\_
- MOUNTING & LOCK OPTION: \_\_\_\_\_
- 3 = SCREW MOUNT, POSITIVE LOCK  
 4 = PEG MOUNT, POSITIVE LOCK  
 5 = PEG MOUNT, PASSIVE LOCK
- PLATING OPTION: \_\_\_\_\_
- (SEE NOTE 2)
- MATERIAL OPTION: \_\_\_\_\_
- (SEE NOTE 1)



|   |  |          |  |                   |  |                           |  |          |  |
|---|--|----------|--|-------------------|--|---------------------------|--|----------|--|
| THIS DRAWING CONTAINS INFORMATION THAT IS PROPRIETARY TO MOLEX ELECTRONIC TECHNOLOGIES, LLC AND SHOULD NOT BE USED WITHOUT WRITTEN PERMISSION |  |          |  |                   |  |                           |  |          |  |
| DIMENSION UNITS   |  | SCALE    |  | CURRENT REV DESC: |  |                           |  |          |  |
| IN/MM   |  | NTS      |  |                   |  |                           |  |          |  |
| GENERAL TOLERANCES (UNLESS SPECIFIED)   |  |          |  |                   |  |                           |  |          |  |
|   |  | MM       |  | INCH              |  |                           |  |          |  |
| 4 PLACES  |  | ±        |  | ±                 |  | EC NO: 728634             |  |          |  |
| 3 PLACES  |  | ±        |  | ± 0.015           |  | DRWN: JERRYW8 2022/11/15  |  |          |  |
| 2 PLACES  |  | ± 0.38   |  | ±                 |  | CHK'D: XQZHANG 2022/11/16 |  |          |  |
| 1 PLACE   |  | ±        |  | ±                 |  | APPR: XQZHANG 2022/11/16  |  |          |  |
| 0 PLACES  |  | ±        |  | ±                 |  | INITIAL REVISION:         |  |          |  |
| ANGULAR TOL   |  | ± 3.0 °  |  |                   |  | DRWN: KSS 2/14/89         |  |          |  |
| DRAFT WHERE APPLICABLE MUST REMAIN WITHIN DIMENSIONS  |  |          |  |                   |  | APPR: RAS 2/14/89         |  |          |  |
| THIRD ANGLE PROJECTION  |  | DRAWING  |  | SERIES            |  | DOCUMENT NUMBER           |  |          |  |
| C-SIZE  |  | 5569     |  | SEE CHARTS        |  | 55690004-SD               |  |          |  |
| MATERIAL NUMBER   |  | CUSTOMER |  | DOC TYPE          |  | DOC PART                  |  | REVISION |  |
| GENERAL MARKET  |  | 1 OF 2   |  | PSD               |  | 000                       |  | A2       |  |

THIS DRAWING REPLACES DRAWING SDA-5569-NL\*

| UL94V-2                          |              |           |                 |             |                      |                     |                  |
|----------------------------------|--------------|-----------|-----------------|-------------|----------------------|---------------------|------------------|
| E.D.P. NO.                       | ENG. NO.     | CKT. SIZE | MOUNTING OPTION | LOCK OPTION | PLATING (SEE NOTE 2) | MAT'L. (SEE NOTE 1) | PACKAGING OPTION |
| <b>SCREW MOUNT POSITIVE LOCK</b> |              |           |                 |             |                      |                     |                  |
| 39-30-3041                       | 5569-04A3MS  | 4         | SCREWS          | POSITIVE    | TIN/NICKEL           | 94V-2               | BULK             |
| 39-30-3051                       | 5569-05A3MS  | 5         | SCREWS          | POSITIVE    | TIN/NICKEL           | 94V-2               | BULK             |
| 39-30-3043                       | 5569-04A3GS  | 4         | SCREWS          | POSITIVE    | 30 GOLD              | 94V-2               | BULK             |
| 39-30-3053                       | 5569-05A3GS  | 5         | SCREWS          | POSITIVE    | 30 GOLD              | 94V-2               | BULK             |
| <b>PEG MOUNT POSITIVE LOCK</b>   |              |           |                 |             |                      |                     |                  |
| 39-30-3045                       | 5569-04A4    | 4         | PEGS            | POSITIVE    | TIN/NICKEL           | 94V-2               | BULK             |
| 39-30-3055                       | 5569-05A4    | 5         | PEGS            | POSITIVE    | TIN/NICKEL           | 94V-2               | BULK             |
| 46999-0709                       | 5569-02A4G   | 2         | PEGS            | POSITIVE    | 30 GOLD              | 94V-2               | TRAY             |
| 39-30-3047                       | 5569-04A4G   | 4         | PEGS            | POSITIVE    | 30 GOLD              | 94V-2               | BULK             |
| 39-30-3057                       | 5569-05A4G   | 5         | PEGS            | POSITIVE    | 30 GOLD              | 94V-2               | BULK             |
| 46999-0710                       | 5569-06A4G   | 6         | PEGS            | POSITIVE    | 30 GOLD              | 94V-2               | TRAY             |
| 46999-0713                       | 5569-02A4MS  | 2         | PEGS            | POSITIVE    | TIN/NICKEL           | 94V-2               | TRAY             |
| 46999-0100                       | 5569-05A4MS  | 5         | PEGS            | POSITIVE    | TIN/NICKEL           | 94V-2               | BULK             |
| 46999-0714                       | 5569-06A4MS  | 6         | PEGS            | POSITIVE    | TIN/NICKEL           | 94V-2               | TRAY             |
| 46999-0098                       | 5569-05A4RM  | 5         | PEGS            | POSITIVE    | REFLOW/NICKEL        | 94V-2               | BULK             |
| <b>PEG MOUNT, PASSIVE LOCK</b>   |              |           |                 |             |                      |                     |                  |
| NO E.D.P.                        | 5569-04A5MS  | 4         | PEGS            | PASSIVE     | TIN/NICKEL           | 94V-2               | BULK             |
| 15-24-1501                       | 5569-05A5MS  | 5         | PEGS            | PASSIVE     | TIN/NICKEL           | 94V-2               | BULK             |
| NO E.D.P.                        | 5569-04A5GS2 | 4         | PEGS            | PASSIVE     | 15 GOLD              | 94V-2               | BULK             |
| 15-27-1501                       | 5569-05A5GS2 | 5         | PEGS            | PASSIVE     | 15 GOLD              | 94V-2               | BULK             |

| UL94V-0                          |                   |           |                 |             |                      |                     |                  |
|----------------------------------|-------------------|-----------|-----------------|-------------|----------------------|---------------------|------------------|
| E.D.P. NO.                       | ENG. NO.          | CKT. SIZE | MOUNTING OPTION | LOCK OPTION | PLATING (SEE NOTE 2) | MAT'L. (SEE NOTE 1) | PACKAGING OPTION |
| <b>SCREW MOUNT POSITIVE LOCK</b> |                   |           |                 |             |                      |                     |                  |
| 50-30-4469                       | 5569-04A3MS-210   | 4         | SCREW           | POSITIVE    | TIN/NICKEL           | 94V-0               | BULK             |
| NO E.D.P.                        | 5569-05A3MS-210   | 5         | SCREW           | POSITIVE    | TIN/NICKEL           | 94V-0               | BULK             |
| NO E.D.P.                        | 5569-04A3GS-210   | 4         | SCREW           | POSITIVE    | 30 GOLD              | 94V-0               | BULK             |
| NO E.D.P.                        | 5569-05A3GS-210   | 5         | SCREW           | POSITIVE    | 30 GOLD              | 94V-0               | BULK             |
| <b>PEG MOUNT POSITIVE LOCK</b>   |                   |           |                 |             |                      |                     |                  |
| 46999-0703                       | 5569-02A4MS-210   | 2         | PEGS            | POSITIVE    | TIN/NICKEL           | 94V-0               | TRAY             |
| 39-30-3046                       | 5569-04A4MS-210   | 4         | PEGS            | POSITIVE    | TIN/NICKEL           | 94V-0               | BULK             |
| 39-30-3056                       | 5569-05A4MS-210   | 5         | PEGS            | POSITIVE    | TIN/NICKEL           | 94V-0               | BULK             |
| 39-30-3054                       | 5569-05A4MS-210-T | 5         | PEGS            | POSITIVE    | TIN/NICKEL           | 94V-0               | TRAY             |
| 46999-0704                       | 5569-06A4MS-210   | 6         | PEGS            | POSITIVE    | TIN/NICKEL           | 94V-0               | TRAY             |
| 46999-0711                       | 5569-02A4G-210    | 2         | PEGS            | POSITIVE    | 30 GOLD              | 94V-0               | TRAY             |
| 39-30-3048                       | 5569-04A4G-210    | 4         | PEGS            | POSITIVE    | 30 GOLD              | 94V-0               | BULK             |
| 39-30-3058                       | 5569-05A4G-210    | 5         | PEGS            | POSITIVE    | 30 GOLD              | 94V-0               | BULK             |
| 46999-0712                       | 5569-06A4G-210    | 6         | PEGS            | POSITIVE    | 30 GOLD              | 94V-0               | TRAY             |
| 46999-0432                       | 5569-04A4GS-400   | 4         | PEGS            | POSITIVE    | 30 GOLD              | 94V-0               | BULK             |
| 50-30-4436                       | 5569-05A4GS-400   | 5         | PEGS            | POSITIVE    | 30 GOLD              | 94V-0               | BULK             |
| 46999-0707                       | 5569-02A4MS-400   | 2         | PEGS            | POSITIVE    | TIN/NICKEL           | 94V-0               | TRAY             |
| 46999-0288                       | 5569-04A4MS-400   | 4         | PEGS            | POSITIVE    | TIN/NICKEL           | 94V-0               | BULK             |
| 46999-0289                       | 5569-05A4MS-400   | 5         | PEGS            | POSITIVE    | TIN/NICKEL           | 94V-0               | BULK             |
| 46999-0708                       | 5569-06A4MS-400   | 6         | PEGS            | POSITIVE    | TIN/NICKEL           | 94V-0               | TRAY             |

|   |  |         |              |                           |            |          |  |   |  |                 |  |                |  |              |  |
|---|--|---------|--------------|---------------------------|------------|----------|--|---|--|-----------------|--|----------------|--|--------------|--|
| THIS DRAWING CONTAINS INFORMATION THAT IS PROPRIETARY TO MOLEX ELECTRONIC TECHNOLOGIES, LLC AND SHOULD NOT BE USED WITHOUT WRITTEN PERMISSION |  |         |              |                           |            |          |  |   |  |                 |  |                |  |              |  |
| DIMENSION UNITS   |  | SCALE   |              | CURRENT REV DESC:         |            |          |  | <b>molex</b>  |  |                 |  |                |  |              |  |
| IN/MM   |  | NTS     |              |                           |            |          |  |   |  |                 |  |                |  |              |  |
| GENERAL TOLERANCES (UNLESS SPECIFIED)   |  |         |              | EC NO: 728634             |            |          |  | RIGHT ANGLE HEADER ASSY<br>(SINGLE ROW) (MINI-FIT JR. SERIES) |  |                 |  |                |  |              |  |
|   |  | MM      | INCH         | DRWN: JERRYW8 2022/11/15  |            |          |  |   |  |                 |  |                |  |              |  |
| 4 PLACES  |  | ±       | ±            | CHK'D: XQZHANG 2022/11/16 |            |          |  | PRODUCT CUSTOMER DRAWING                                      |  |                 |  |                |  |              |  |
| 3 PLACES  |  | ±       | ± 0.015      | APPR: XQZHANG 2022/11/16  |            |          |  |   |  |                 |  |                |  |              |  |
| 2 PLACES  |  | ±       | 0.38 ±       | INITIAL REVISION:         |            |          |  | DOCUMENT NUMBER<br><b>55690004-SD</b>                         |  |                 |  |                |  |              |  |
| 1 PLACE   |  | ±       | ±            | DRWN: KSS 2/14/89         |            |          |  |   |  |                 |  |                |  |              |  |
| 0 PLACES  |  | ±       | ±            | APPR: RAS 2/14/89         |            |          |  | DOC TYPE  |  | DOC PART        |  | REVISION       |  |              |  |
| ANGULAR TOL   |  | ± 3.0 ° |              | THIRD ANGLE PROJECTION    |            | DRAWING  |  | SERIES  |  | MATERIAL NUMBER |  | CUSTOMER       |  | SHEET NUMBER |  |
| DRAFT WHERE APPLICABLE MUST REMAIN WITHIN DIMENSIONS  |  |         |              |                           |            | C-SIZE   |  | 5569  |  | SEE CHARTS      |  | GENERAL MARKET |  | 2 OF 2       |  |
| DOCUMENT STATUS   |  | P1      | RELEASE DATE |                           | 2022/11/16 | 09:25:17 |  |   |  |                 |  |                |  |              |  |