

Push-to-Reset Circuit Breaker

Small Package

UL489 Protector

Cadmium - Free

High Capacity 5000AIC



Series 02

Raising the Bar

MP - Count on it



Mechanical Products Company

Series 02 Overview

MP Series 02 includes Models 252, 600, and 601 Push-to-Reset circuit breakers. A distinctive characteristic of this design is its double-contact break mechanism. This configuration allows some models in this family to withstand short circuit conditions as high as 5,000A and continue to function. Model 252 (push-to-reset) and Model 752 (Switchable) are the smallest devices available that are capable of withstanding a 5,000A short circuit.

Series 02 offers:

- AC/DC ratings from 5 to 30A
- UL, CSA, VDE, CCC
- ROHS Compliance - Cd Free
- Superior Interrupt Capacity
- High Capacity in a Small Package

Series 02 Specifications

Standard Amp Ratings

Model 252 is offered in ratings of 10A, 15A & 20A
 Model 600 is offered in ratings of 5A*, 7A*, 10A, 15A, and 20A
 Model 601 is offered in ratings of 30A

*Consult factory for amperage ratings 5-7A

Minimum Ultimate Trip

Series 02 has a minimum ultimate trip of 100% of rated current at 25°C/77°F

Voltage Ratings

Model 252 - 120VAC
Model 600 - 277VAC/32VDC
Model 601 - 277VAC

Interrupt Capacity (UL489 and UL1077)

Model 252
 5,000A/120VAC per UL489
Model 600
 5,000A/277VAC per UL1077
 1,000A/120VAC per UL1077
Model 601
 5,000A/277VAC per UL1077

Dielectric Strength

Series 02 models have a dielectric strength that exceeds 1,500V.

Inrush Capacity

Series 02 models will not trip at 35X rated current for 1/2 cycle (0.008 sec.)

Maximum Ultimate Trip

Series 02 has a maximum ultimate trip of 135% of rated current at 25°C/77°F

Regulatory Approvals

Model 252
 UL - Recognized per UL489 (File #14942)
 suitable for branch circuit protection
 CSA -Certified per C22.2 No. 5 (File #LR13089)
 VDE -Licensed to IEC STD 60934 (License #40011788)
 CCC -CQC STD GB17701-2008 (Certificate #2005010307139109)
Model 600
 UL -Recognized per UL1077 (File #E27727)
 CSA -Certified per C22.2 No. 235 (File #LR27156)
 VDE -Licensed to IEC STD 60934 (License #40011788)
 CCC -CQC STD GB17701-2008 (Certificate #2005010307139109)
Model 601
 UL - Recognized per UL1077 (File #E27727)
 CSA -Certified per C22.2 No. 235 (File #LR27156)
 CCC - CQC STD GB17701-2008 (Certificate #2005010307139109)

Ambient Temperature Correction Factor

Current Rating	°F	32	77	104	122	140
	°C	0	25	40	50	60
5 & 7A		0.84	1.00	1.15	1.3	1.53
10 to 30A		0.88	1.00	1.11	1.2	1.32

Factors are typical for amperages listed

Voltage Drop

Model	Ampere Range	Voltage Drop
252	10 & 20A	0.25V
600	5 & 7A	0.35V
	10 & 20A	0.25V
601	30A	0.15V

Overload Trip Time Data (in seconds)

Current Rating	200%	300%	400%	500%	600%	800%	1000%
5 - 7 A	5 - 20	1.7 - 6.4	0.9 - 3.1	0.5 - 1.9	0.35 - 1.4	0.2 - 0.76	0.17 - 0.53
10 - 30 A	5 - 30	1.8 - 10	0.9 - 5	0.5 - 3.3	0.38 - 2.3	0.2 - 1.3	0.15 - 0.9

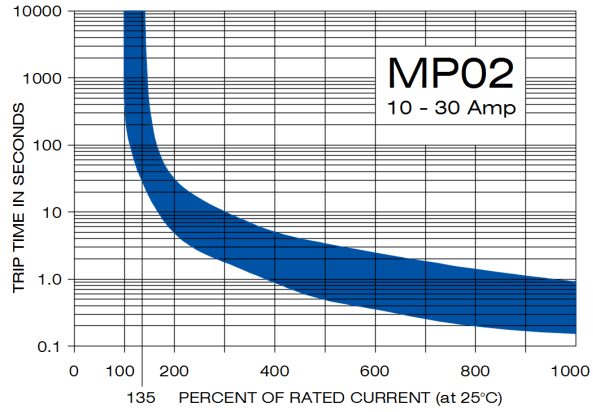
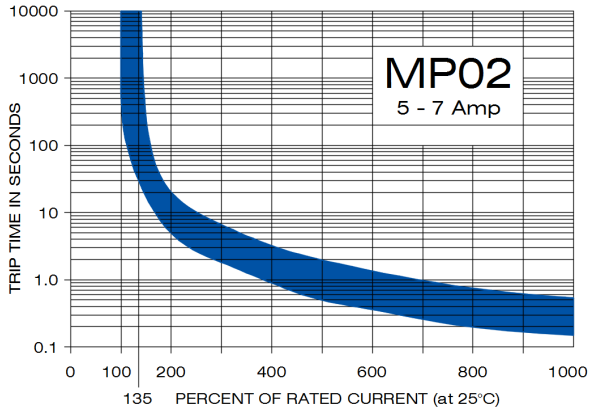


Mechanical Products Company

1112 Garfield St. Lombard, IL 60148 helpme@mechprod.com phone 630 | 953 | 4100 fax 630 | 953 | 4110 www.mechprod.com
 Specifications Subject to Change

QC-4001-B

Series 02 Operating Characteristics

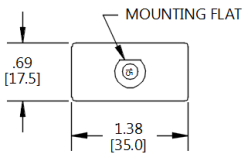


Trip curves presented are based on typical samples and are for reference.
Please consult the factory for more specific application information
Trip curves are specified at 25°C / 77°F

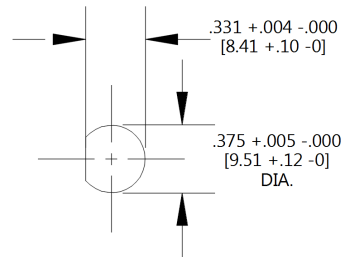
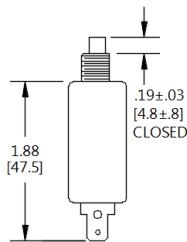
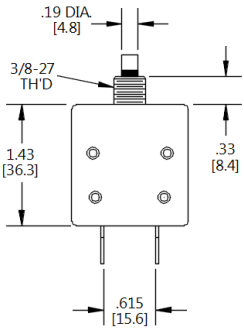
Series 02 Physical Configuration

Case Sizes: Models 252 - 600

(See Part Numbering Guide)



Models 252 and 600 offer single-pole, push-to-reset circuit protection. Standard terminals are 0.250" quick-connect type. Standard through-hole mounting is threaded 3/8"-27 bushing with a D-shaped flat for anti-rotation requirements.



SUGGESTED PANEL MOUNTING HOLE

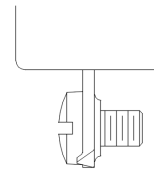
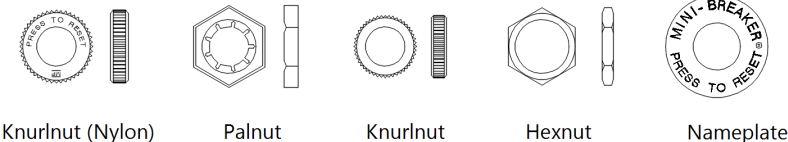
If the actuator button is imprinted with the amp rating, the flat on the panel cutout should be to the left of the actuator in vertical orientation. If no amp stamp is specified, the flat can be oriented parallel.

Mounting Hardware

(See Part Numbering Guide)

Note: All dimensions are in inches [mm]

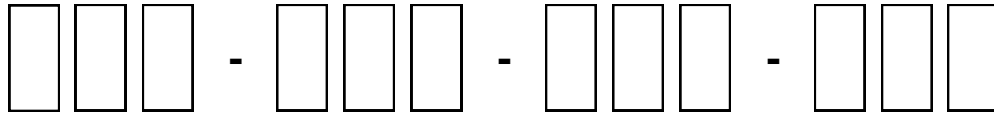
Standard terminals on Model 601



Model 601, rated at 30A comes with standard #10-32 screw terminals

Series 02 Part Numbering Guide

P/N:



Code	Model	Code	Variation	Code	Amp Ratings	Code	Hardware		
252	UL489 recognized CSA certified 5,000A interrupt @ 120VAC	001	3/8"-27 dia. Threaded mounting bushing w/ anti-rotation flat. 0.250" quick-connect terminals. White Actuator with trip indicator.	100	10.0A	050	Palnut / Knurlnut / Name Plate		
		041	3/8"-27 dia. Threaded mounting bushing w/ anti-rotation flat . 0.250" quick-connect terminals. Terminals bent outbound 90 degrees White Actuator with trip indicator.	150	15.0A				
		401	3/8"-27 dia. Threaded mounting bushing w/ anti-rotation flat. 0.250" quick-connect terminals. White Actuator with trip indicator. Black ampere rating marking on actuator.	200	20.0A				
600	UL1077 recognized CSA certified: 5,000A interrupt @ 277VAC 1,000A interrupt @ 32VDC	001	3/8"-27 dia. Threaded mounting bushing w/ anti-rotation flat. 0.250" quick-connect terminals. White Actuator with trip indicator.	050	5.0A*			051	Palnut / Knurlnut
		011	3/8"-27 dia. Threaded mounting bushing w/ anti-rotation flat. 0.250" quick-connect terminals. White actuator with trip indicator. ampere rating marking on actuator.	070	7.0A*				
		017	3/8"-27 dia. Threaded mounting bushing w/ anti-rotation flat. 0.250" quick-connect terminals. Terminals bent outbound 90 degrees. White actuator with trip indicator.	100	10.0A				
601	UL1077 recognized CSA certified: 5,000A interrupt @ 277VAC	001	3/8"-27 dia. Threaded mounting bushing w/ anti-rotation flat. #10-32 UNF screw terminals. White Actuator with trip indicator.	150	15.0A	054	Hexnut / Hexnut		
				200	20.0A				
				300	30.0A				

*Consult factory for amperage ratings 5-7A



WARNING: CANCER & REPRODUCTIVE HARM – www.P65Warnings.Ca.Gov/

• For More Information visit www.mechprod.com/MP Prop 65



Mechanical Products Company

1112 N. Garfield St. Lombard, IL 60148 helpme@mechprod.com phone 630 | 953 | 4100 fax 630 | 953 | 4110 www.mechprod.com

Specifications subject to change