

Change Notice

M2100 & LB Series

Changes to LED Specifications for M2100 Series Paddles

Type of Change:

- Engineering Part Number
 Product Appearance

1. The LED specifications for M2100 Series illuminated paddles will be undergoing changes. These changes apply to the single color LED tipped paddle. This will result in revisions to the electrical values and will apply to models with red, yellow or green single color LEDs. The changes will effect both standard and custom switches. Following is the comparison between the specifications before and after the changes. Effected standard part numbers are on page 2.



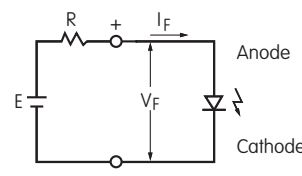
M2100 Series Paddles will have changes to the single color LEDs.

CHANGES TO SPECIFICATIONS FOR SINGLE COLOR LED

| | | Before Change | | | After Change | | |
|---|--------------|-----------------|--------------------|-------------------|----------------------|--------------------|-------------------|
| | | C Red | E Yellow | F Green | C Red | E Yellow | F Green |
| The electrical specifications shown are determined at a basic temperature of 25°C. The LED is an integral part of the switch and not available separately. Single Color LED with 1 Element | | | | | | | |
| Maximum Forward Current | I_{FM} | 25mA | 30mA | 25mA | 30mA | 30mA | 30mA |
| Typical Forward Current | I_F | 20mA | 20mA | 20mA | 20mA | 20mA | 20mA |
| Forward Voltage | V_F | 2.25V | 2.1V | 2.2V | 2.1V | 2.1V | 2.2V |
| | | $I_F = 20mA$ | $I_F = 20mA$ | $I_F = 20mA$ | $I_F = 20mA$ | $I_F = 20mA$ | $I_F = 20mA$ |
| Maximum Reverse Voltage | V_{RM} | 5V | 5V | 5V | 5V | 5V | 5V |
| Current Reduction Rate Above 25°C | ΔI_F | 0.33mA/°C | 0.40mA/°C | 0.33mA/°C | 0.40mA/°C | 0.40mA/°C | 0.40mA/°C |
| Ambient Temperature Range | | -25°C ~ +50°C | | | -25°C ~ +70°C | | |

Notes

- The LED circuit is isolated and requires an external power source.
- For best results and safe use of LEDs, the supply voltage should be more than the LED forward voltage. Also, an appropriately valued ballast resistor should be used. Without the ballast resistor, the LED will be damaged or destroyed. The resistor value can be calculated by using the formula shown here.
- There are no changes to the switches' external dimensions.
- Contact information is below if more details are needed.



$$R = \frac{E - V_F}{I_F}$$

Where: R = Resistor Value (Ohms)
 E = Source Voltage (V)
 V_F = Forward Voltage (V)
 I_F = Forward Current (A)

Effective Dates

Changes for M2100 Series Paddles with single color LEDs will be effective November 2021.

NKK
SWITCHES

www.nkkswitches.com • 1.877.2BUYNKK (228.9655)

7850 East Gelding Drive • Scottsdale, AZ 85260 • Telephone 480.991.0942 • Fax 480.998.1435

Change Notice

M2100 & LB Series

Changes to LED Specifications for M2100 Series Paddles

| EFFECTED STANDARD PART NUMBERS | | | | | | |
|--------------------------------|------------|------------|------------|------------|------------|------------|
| M2112PCW01 | M2112PCW02 | M2112PCW03 | M2112PCW13 | M2112PCG01 | M2112PCG02 | M2112PCG03 |
| M2112PEW01 | M2112PEW02 | M2112PEW03 | M2112PEW13 | M2112PEG01 | M2112PEG02 | M2112PEG03 |
| M2112PFW01 | M2112PFW02 | M2112PFW03 | M2112PFW13 | M2112PFG01 | M2112PFG02 | M2112PFG03 |
| M2112JCW01 | M2112JCW02 | M2112JCW03 | M2112JCW13 | M2112JCG01 | M2112JCG02 | M2112JCG03 |
| M2112JEW01 | M2112JEW02 | M2112JEW03 | M2112JEW13 | M2112JEG01 | M2112JEG02 | M2112JEG03 |
| M2112JFW01 | M2112JFW02 | M2112JFW03 | M2112JFW13 | M2112JFG01 | M2112JFG02 | M2112JFG03 |
| M2113PCW01 | M2113PCW02 | M2113PCW03 | M2113PCW13 | M2113PCG01 | M2113PCG02 | M2113PCG03 |
| M2113PEW01 | M2113PEW02 | M2113PEW03 | M2113PEW13 | M2113PEG01 | M2113PEG02 | M2113PEG03 |
| M2113PFW01 | M2113PFW02 | M2113PFW03 | M2113PFW13 | M2113PFG01 | M2113PFG02 | M2113PFG03 |
| M2113JCW01 | M2113JCW02 | M2113JCW03 | M2113JCW13 | M2113JCG01 | M2113JCG02 | M2113JCG03 |
| M2113JEW01 | M2113JEW02 | M2113JEW03 | M2113JEW13 | M2113JEG01 | M2113JEG02 | M2113JEG03 |
| M2113JFW01 | M2113JFW02 | M2113JFW03 | M2113JFW13 | M2113JFG01 | M2113JFG02 | M2113JFG03 |

| EFFECTED STANDARD PART NUMBERS | | | | | | |
|--------------------------------|------------|------------|------------|------------|------------|------------|
| M2112PCG13 | M2122PCW01 | M2122PCW02 | M2122PCW03 | M2122PCG01 | M2122PCG02 | M2122PCG03 |
| M2112PEG13 | M2122PEW01 | M2122PEW02 | M2122PEW03 | M2122PEG01 | M2122PEG02 | M2122PEG03 |
| M2112PFG13 | M2122PFW01 | M2122PFW02 | M2122PFW03 | M2122PFG01 | M2122PFG02 | M2122PFG03 |
| M2112JCG13 | M2122JCW01 | M2122JCW02 | M2122JCW03 | M2122JCG01 | M2122JCG02 | M2122JCG03 |
| M2112JEG13 | M2122JEW01 | M2122JEW02 | M2122JEW03 | M2122JEG01 | M2122JEG02 | M2122JEG03 |
| M2112JFG13 | M2122JFW01 | M2122JFW02 | M2122JFW03 | M2122JFG01 | M2122JFG02 | M2122JFG03 |
| M2113PCG13 | M2123PCW01 | M2123PCW02 | M2123PCW03 | M2123PCG01 | M2123PCG02 | M2123PCG03 |
| M2113PEG13 | M2123PEW01 | M2123PEW02 | M2123PEW03 | M2123PEG01 | M2123PEG02 | M2123PEG03 |
| M2113PFG13 | M2123PFW01 | M2123PFW02 | M2123PFW03 | M2123PFG01 | M2123PFG02 | M2123PFG03 |
| M2113JCG13 | M2123JCW01 | M2123JCW02 | M2123JCW03 | M2123JCG01 | M2123JCG02 | M2123JCG03 |
| M2113JEG13 | M2123JEW01 | M2123JEW02 | M2123JEW03 | M2123JEG01 | M2123JEG02 | M2123JEG03 |
| M2113JFG13 | M2123JFW01 | M2123JFW02 | M2123JFW03 | M2123JFG01 | M2123JFG02 | M2123JFG03 |

Note: This change also includes part numbers shown with suffixes -A, -B, -E, -F, -G or -H.



www.nkkswitches.com • 1.877.2BUYNKK (228.9655)
7850 East Gelding Drive • Scottsdale, AZ 85260 • Telephone 480.991.0942 • Fax 480.998.1435

Change Notice

M2100 & LB Series

Changes to LED Specifications for LB Series Spot Illuminated Pushbuttons

Type of Change:

- Engineering Part Number
 Product Appearance

2. The LED specifications for snap-in LB Series spot illuminated pushbuttons will be undergoing changes. This will result in revisions to the electrical values and will apply to red, yellow and green single color LEDs. The changes will effect both standard and custom switches. Following is the comparison between the specifications before and after the changes. Effected standard part numbers are on the table below and the following two pages.

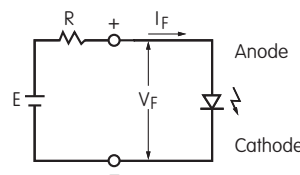
CHANGES TO SPECIFICATIONS FOR SINGLE COLOR LED

| | | Before Change | | | After Change | | |
|-----------------------------------|--------------|---------------|--------------|--------------|---------------|--------------|--------------|
| | | 1C | 1D | 1F | 1C | 1D | 1F |
| | | Red | Amber | Green | Red | Amber | Green |
| Single Color LED with 1 Element | | | | | | | |
| Maximum Forward Current | I_{FM} | 25mA | 30mA | 25mA | 30mA | 30mA | 30mA |
| Typical Forward Current | I_F | 20mA | 20mA | 20mA | 20mA | 20mA | 20mA |
| Forward Voltage | V_F | 2.25V | 2.1V | 2.2V | 2.1V | 2.1V | 2.2V |
| | | $I_F = 20mA$ | $I_F = 20mA$ | $I_F = 20mA$ | $I_F = 20mA$ | $I_F = 20mA$ | $I_F = 20mA$ |
| Maximum Reverse Voltage | V_{RM} | 5V | 5V | 5V | 5V | 5V | 5V |
| Current Reduction Rate Above 25°C | ΔI_F | 0.33mA/°C | 0.40mA/°C | 0.33mA/°C | 0.40mA/°C | 0.40mA/°C | 0.40mA/°C |
| Ambient Temperature Range | | -25°C ~ +70°C | | | -25°C ~ +50°C | | |

The electrical specifications shown are determined at a basic temperature of 25°C. The LED is an integral part of the switch and not available separately. Single color LEDs are colored in OFF state. Polarity marks are on the switch.

Notes

- The LED circuit is isolated and requires an external power source.
- For best results and safe use of LEDs, the supply voltage should be more than the LED forward voltage. Also, an appropriately valued ballast resistor should be used. Without the ballast resistor, the LED will be damaged or destroyed. The resistor value can be calculated by using the formula shown here.
- There are no changes to the switches' external dimensions.
- Contact information is below if more details are needed.



$$R = \frac{E - V_F}{I_F}$$

Where: R = Resistor Value (Ohms)
 E = Source Voltage (V)
 V_F = Forward Voltage (V)
 I_F = Forward Current (A)

EFFECTED STANDARD PART NUMBERS

| AT480 Square Spot Illuminated Cap | | | | AT4016 Round Spot Illuminated Cap | | | |
|-----------------------------------|---------|---------|---------|-----------------------------------|----------|----------|----------|
| AT480CA | AT480CB | AT480CC | AT480CF | AT4016CA | AT4016CB | AT4016CC | AT4016CF |
| AT480DA | AT480DB | AT480DC | AT480DF | AT4016DA | AT4016DB | AT4016DC | AT4016DF |
| AT480FA | AT480FB | AT480FC | AT480FF | AT4016FA | AT4016FB | AT4016FC | AT4016FF |

Effective Dates

Changes for LB Series Pushbuttons with single color LEDs and spot illumination will be effective November 2021.

NKK
SWITCHES

www.nkkswitches.com • 1.877.2BUYNKK (228.9655)

7850 East Gelding Drive • Scottsdale, AZ 85260 • Telephone 480.991.0942 • Fax 480.998.1435

Change Notice

M2100 & LB Series

Changes to LED Specifications for LB Series Spot Illuminated Pushbuttons

EFFECTED STANDARD ASSEMBLED PART NUMBERS

| | | | | | | | |
|----------------|----------------|----------------|----------------|----------------|----------------|----------------|----------------|
| LB15SKW01-1C-A | LB15SKW01-1C-B | LB15SKW01-1C-C | LB15SKW01-1C-F | LB15SKG01-1C-A | LB15SKG01-1C-B | LB15SKG01-1C-C | LB15SKG01-1C-F |
| LB15SKW01-1D-A | LB15SKW01-1D-B | LB15SKW01-1D-C | LB15SKW01-1D-F | LB15SKG01-1D-A | LB15SKG01-1D-B | LB15SKG01-1D-C | LB15SKG01-1D-F |
| LB15SKW01-1F-A | LB15SKW01-1F-B | LB15SKW01-1F-C | LB15SKW01-1F-F | LB15SKG01-1F-A | LB15SKG01-1F-B | LB15SKG01-1F-C | LB15SKG01-1F-F |
| LB16SKW01-1C-A | LB16SKW01-1C-B | LB16SKW01-1C-C | LB16SKW01-1C-F | LB16SKG01-1C-A | LB16SKG01-1C-B | LB16SKG01-1C-C | LB16SKG01-1C-F |
| LB16SKW01-1D-A | LB16SKW01-1D-B | LB16SKW01-1D-C | LB16SKW01-1D-F | LB16SKG01-1D-A | LB16SKG01-1D-B | LB16SKG01-1D-C | LB16SKG01-1D-F |
| LB16SKW01-1F-A | LB16SKW01-1F-B | LB16SKW01-1F-C | LB16SKW01-1F-F | LB16SKG01-1F-A | LB16SKG01-1F-B | LB16SKG01-1F-C | LB16SKG01-1F-F |
| LB25SKW01-1C-A | LB25SKW01-1C-B | LB25SKW01-1C-C | LB25SKW01-1C-F | LB25SKG01-1C-A | LB25SKG01-1C-B | LB25SKG01-1C-C | LB25SKG01-1C-F |
| LB25SKW01-1D-A | LB25SKW01-1D-B | LB25SKW01-1D-C | LB25SKW01-1D-F | LB25SKG01-1D-A | LB25SKG01-1D-B | LB25SKG01-1D-C | LB25SKG01-1D-F |
| LB25SKW01-1F-A | LB25SKW01-1F-B | LB25SKW01-1F-C | LB25SKW01-1F-F | LB25SKG01-1F-A | LB25SKG01-1F-B | LB25SKG01-1F-C | LB25SKG01-1F-F |
| LB26SKW01-1C-A | LB26SKW01-1C-B | LB26SKW01-1C-C | LB26SKW01-1C-F | LB26SKG01-1C-A | LB26SKG01-1C-B | LB26SKG01-1C-C | LB26SKG01-1C-F |
| LB26SKW01-1D-A | LB26SKW01-1D-B | LB26SKW01-1D-C | LB26SKW01-1D-F | LB26SKG01-1D-A | LB26SKG01-1D-B | LB26SKG01-1D-C | LB26SKG01-1D-F |
| LB26SKW01-1F-A | LB26SKW01-1F-B | LB26SKW01-1F-C | LB26SKW01-1F-F | LB26SKG01-1F-A | LB26SKG01-1F-B | LB26SKG01-1F-C | LB26SKG01-1F-F |

| | | | | | | | |
|----------------|----------------|----------------|----------------|----------------|----------------|----------------|----------------|
| LB15CKW01-1C-A | LB15CKW01-1C-B | LB15CKW01-1C-C | LB15CKW01-1C-F | LB15CKG01-1C-A | LB15CKG01-1C-B | LB15CKG01-1C-C | LB15CKG01-1C-F |
| LB15CKW01-1D-A | LB15CKW01-1D-B | LB15CKW01-1D-C | LB15CKW01-1D-F | LB15CKG01-1D-A | LB15CKG01-1D-B | LB15CKG01-1D-C | LB15CKG01-1D-F |
| LB15CKW01-1F-A | LB15CKW01-1F-B | LB15CKW01-1F-C | LB15CKW01-1F-F | LB15CKG01-1F-A | LB15CKG01-1F-B | LB15CKG01-1F-C | LB15CKG01-1F-F |
| LB16CKW01-1C-A | LB16CKW01-1C-B | LB16CKW01-1C-C | LB16CKW01-1C-F | LB16CKG01-1C-A | LB16CKG01-1C-B | LB16CKG01-1C-C | LB16CKG01-1C-F |
| LB16CKW01-1D-A | LB16CKW01-1D-B | LB16CKW01-1D-C | LB16CKW01-1D-F | LB16CKG01-1D-A | LB16CKG01-1D-B | LB16CKG01-1D-C | LB16CKG01-1D-F |
| LB16CKW01-1F-A | LB16CKW01-1F-B | LB16CKW01-1F-C | LB16CKW01-1F-F | LB16CKG01-1F-A | LB16CKG01-1F-B | LB16CKG01-1F-C | LB16CKG01-1F-F |
| LB25CKW01-1C-A | LB25CKW01-1C-B | LB25CKW01-1C-C | LB25CKW01-1C-F | LB25CKG01-1C-A | LB25CKG01-1C-B | LB25CKG01-1C-C | LB25CKG01-1C-F |
| LB25CKW01-1D-A | LB25CKW01-1D-B | LB25CKW01-1D-C | LB25CKW01-1D-F | LB25CKG01-1D-A | LB25CKG01-1D-B | LB25CKG01-1D-C | LB25CKG01-1D-F |
| LB25CKW01-1F-A | LB25CKW01-1F-B | LB25CKW01-1F-C | LB25CKW01-1F-F | LB25CKG01-1F-A | LB25CKG01-1F-B | LB25CKG01-1F-C | LB25CKG01-1F-F |
| LB26CKW01-1C-A | LB26CKW01-1C-B | LB26CKW01-1C-C | LB26CKW01-1C-F | LB26CKG01-1C-A | LB26CKG01-1C-B | LB26CKG01-1C-C | LB26CKG01-1C-F |
| LB26CKW01-1D-A | LB26CKW01-1D-B | LB26CKW01-1D-C | LB26CKW01-1D-F | LB26CKG01-1D-A | LB26CKG01-1D-B | LB26CKG01-1D-C | LB26CKG01-1D-F |
| LB26CKW01-1F-A | LB26CKW01-1F-B | LB26CKW01-1F-C | LB26CKW01-1F-F | LB26CKG01-1F-A | LB26CKG01-1F-B | LB26CKG01-1F-C | LB26CKG01-1F-F |



www.nkkswitches.com • 1.877.2BUYNKK (228.9655)

7850 East Gelding Drive • Scottsdale, AZ 85260 • Telephone 480.991.0942 • Fax 480.998.1435

Change Notice

M2100 & LB Series

Changes to LED Specifications for LB Series Spot Illuminated Pushbuttons

| EFFECTED STANDARD ASSEMBLED PART NUMBERS | | | | | | | |
|--|----------------|----------------|----------------|----------------|----------------|----------------|-----------------------|
| LB15SGW01-1C-A | LB15SGW01-1C-B | LB15SGW01-1C-C | LB15SGW01-1C-F | LB15SGG01-1C-A | LB15SGG01-1C-B | LB15SGG01-1C-C | LB15SGG01-1C-F |
| LB15SGW01-1D-A | LB15SGW01-1D-B | LB15SGW01-1D-C | LB15SGW01-1D-F | LB15SGG01-1D-A | LB15SGG01-1D-B | LB15SGG01-1D-C | LB15SGG01-1D-F |
| LB15SGW01-1F-A | LB15SGW01-1F-B | LB15SGW01-1F-C | LB15SGW01-1F-F | LB15SGG01-1F-A | LB15SGG01-1F-B | LB15SGG01-1F-C | LB15SGG01-1F-F |
| LB16SGW01-1C-A | LB16SGW01-1C-B | LB16SGW01-1C-C | LB16SGW01-1C-F | LB16SGG01-1C-A | LB16SGG01-1C-B | LB16SGG01-1C-C | LB16SGG01-1C-F |
| LB16SGW01-1D-A | LB16SGW01-1D-B | LB16SGW01-1D-C | LB16SGW01-1D-F | LB16SGG01-1D-A | LB16SGG01-1D-B | LB16SGG01-1D-C | LB16SGG01-1D-F |
| LB16SGW01-1F-A | LB16SGW01-1F-B | LB16SGW01-1F-C | LB16SGW01-1F-F | LB16SGG01-1F-A | LB16SGG01-1F-B | LB16SGG01-1F-C | LB16SGG01-1F-F |
| LB25SGW01-1C-A | LB25SGW01-1C-B | LB25SGW01-1C-C | LB25SGW01-1C-F | LB25SGG01-1C-A | LB25SGG01-1C-B | LB25SGG01-1C-C | LB25SGG01-1C-F |
| LB25SGW01-1D-A | LB25SGW01-1D-B | LB25SGW01-1D-C | LB25SGW01-1D-F | LB25SGG01-1D-A | LB25SGG01-1D-B | LB25SGG01-1D-C | LB25SGG01-1D-F |
| LB25SGW01-1F-A | LB25SGW01-1F-B | LB25SGW01-1F-C | LB25SGW01-1F-F | LB25SGG01-1F-A | LB25SGG01-1F-B | LB25SGG01-1F-C | LB25SGG01-1F-F |
| LB26SGW01-1C-A | LB26SGW01-1C-B | LB26SGW01-1C-C | LB26SGW01-1C-F | LB26SGG01-1C-A | LB26SGG01-1C-B | LB26SGG01-1C-C | LB26SGG01-1C-F |
| LB26SGW01-1D-A | LB26SGW01-1D-B | LB26SGW01-1D-C | LB26SGW01-1D-F | LB26SGG01-1D-A | LB26SGG01-1D-B | LB26SGG01-1D-C | LB26SGG01-1D-F |
| LB26SGW01-1F-A | LB26SGW01-1F-B | LB26SGW01-1F-C | LB26SGW01-1F-F | LB26SGG01-1F-A | LB26SGG01-1F-B | LB26SGG01-1F-C | LB26SGG01-1F-F |
| LB15CGW01-1C-A | LB15CGW01-1C-B | LB15CGW01-1C-C | LB15CGW01-1C-F | LB15CGG01-1C-A | LB15CGG01-1C-B | LB15CGG01-1C-C | LB15CGG01-1C-F |
| LB15CGW01-1D-A | LB15CGW01-1D-B | LB15CGW01-1D-C | LB15CGW01-1D-F | LB15CGG01-1D-A | LB15CGG01-1D-B | LB15CGG01-1D-C | LB15CGG01-1D-F |
| LB15CGW01-1F-A | LB15CGW01-1F-B | LB15CGW01-1F-C | LB15CGW01-1F-F | LB15CGG01-1F-A | LB15CGG01-1F-B | LB15CGG01-1F-C | LB15CGG01-1F-F |
| LB16CGW01-1C-A | LB16CGW01-1C-B | LB16CGW01-1C-C | LB16CGW01-1C-F | LB16CGG01-1C-A | LB16CGG01-1C-B | LB16CGG01-1C-C | LB16CGG01-1C-F |
| LB16CGW01-1D-A | LB16CGW01-1D-B | LB16CGW01-1D-C | LB16CGW01-1D-F | LB16CGG01-1D-A | LB16CGG01-1D-B | LB16CGG01-1D-C | LB16CGG01-1D-F |
| LB16CGW01-1F-A | LB16CGW01-1F-B | LB16CGW01-1F-C | LB16CGW01-1F-F | LB16CGG01-1F-A | LB16CGG01-1F-B | LB16CGG01-1F-C | LB16CGG01-1F-F |
| LB25CGW01-1C-A | LB25CGW01-1C-B | LB25CGW01-1C-C | LB25CGW01-1C-F | LB25CGG01-1C-A | LB25CGG01-1C-B | LB25CGG01-1C-C | LB25CGG01-1C-F |
| LB25CGW01-1D-A | LB25CGW01-1D-B | LB25CGW01-1D-C | LB25CGW01-1D-F | LB25CGG01-1D-A | LB25CGG01-1D-B | LB25CGG01-1D-C | LB25CGG01-1D-F |
| LB25CGW01-1F-A | LB25CGW01-1F-B | LB25CGW01-1F-C | LB25CGW01-1F-F | LB25CGG01-1F-A | LB25CGG01-1F-B | LB25CGG01-1F-C | LB25CGG01-1F-F |
| LB26CGW01-1C-A | LB26CGW01-1C-B | LB26CGW01-1C-C | LB26CGW01-1C-F | LB26CGG01-1C-A | LB26CGG01-1C-B | LB26CGG01-1C-C | LB26CGG01-1C-F |
| LB26CGW01-1D-A | LB26CGW01-1D-B | LB26CGW01-1D-C | LB26CGW01-1D-F | LB26CGG01-1D-A | LB26CGG01-1D-B | LB26CGG01-1D-C | LB26CGG01-1D-F |
| LB26CGW01-1F-A | LB26CGW01-1F-B | LB26CGW01-1F-C | LB26CGW01-1F-F | LB26CGG01-1F-A | LB26CGG01-1F-B | LB26CGG01-1F-C | LB26CGG01-1F-F |



www.nkkswitches.com • 1.877.2BUYNKK (228.9655)

7850 East Gelding Drive • Scottsdale, AZ 85260 • Telephone 480.991.0942 • Fax 480.998.1435