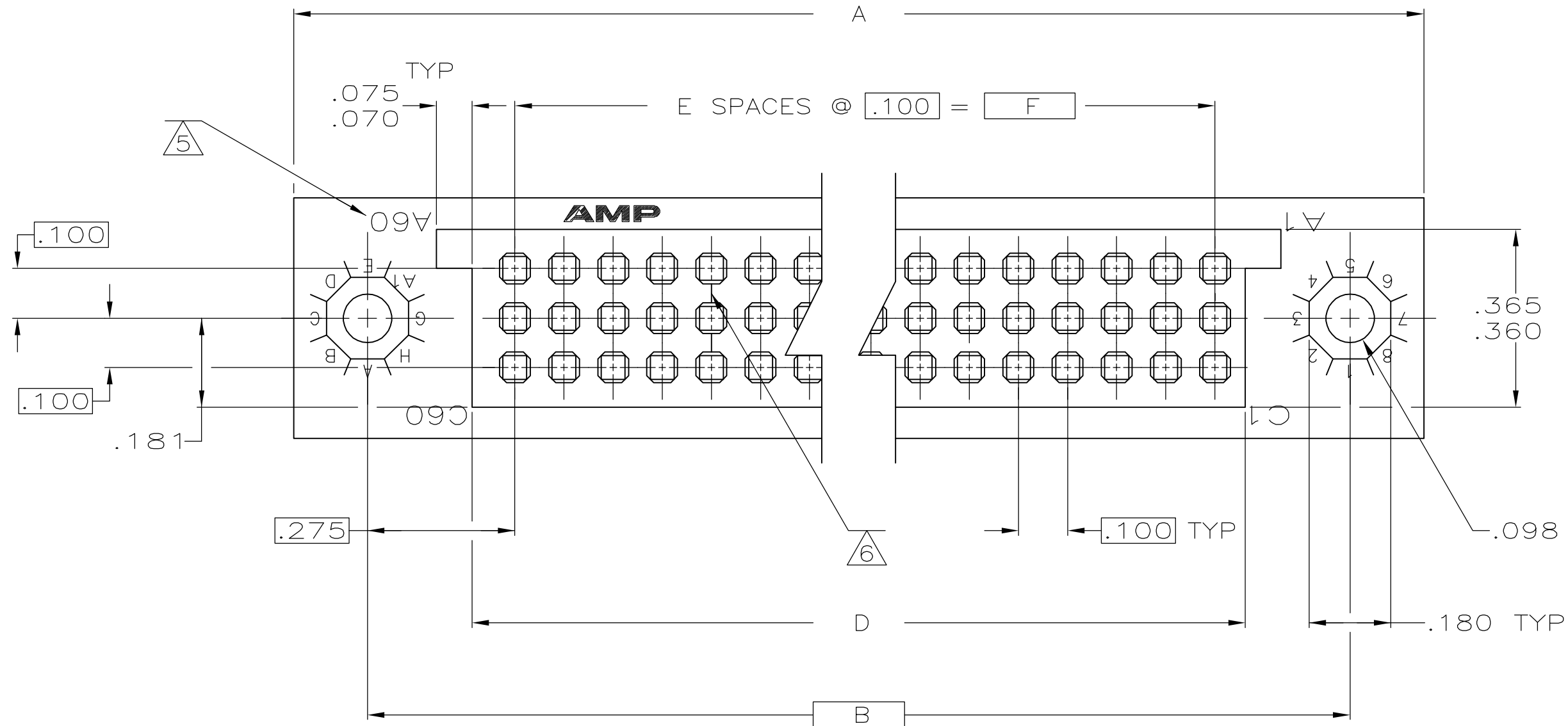
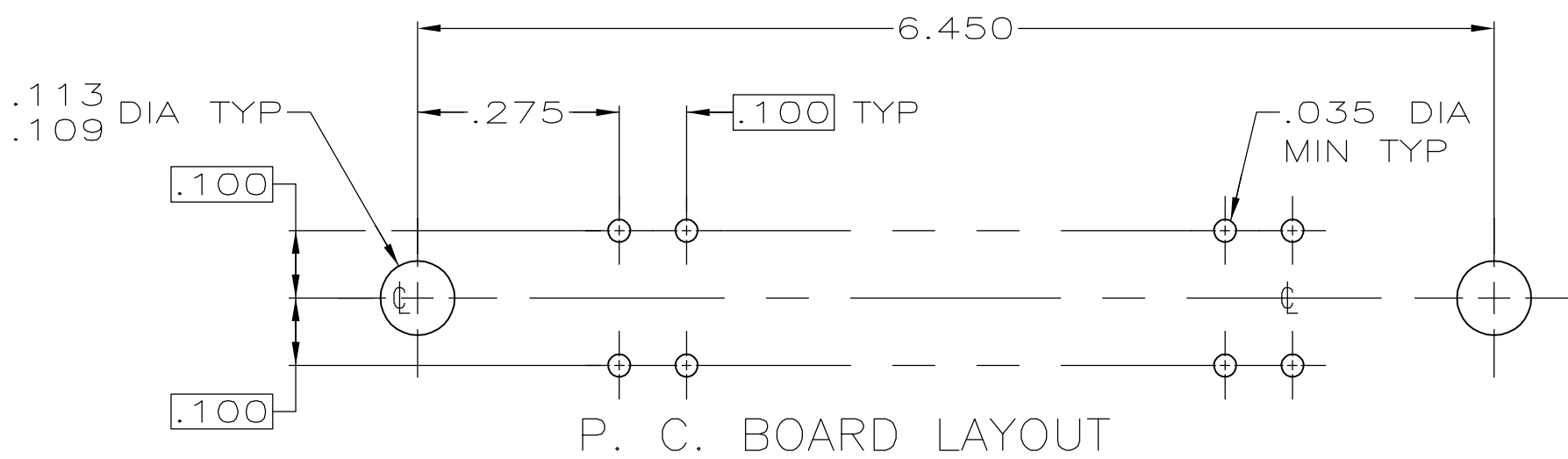
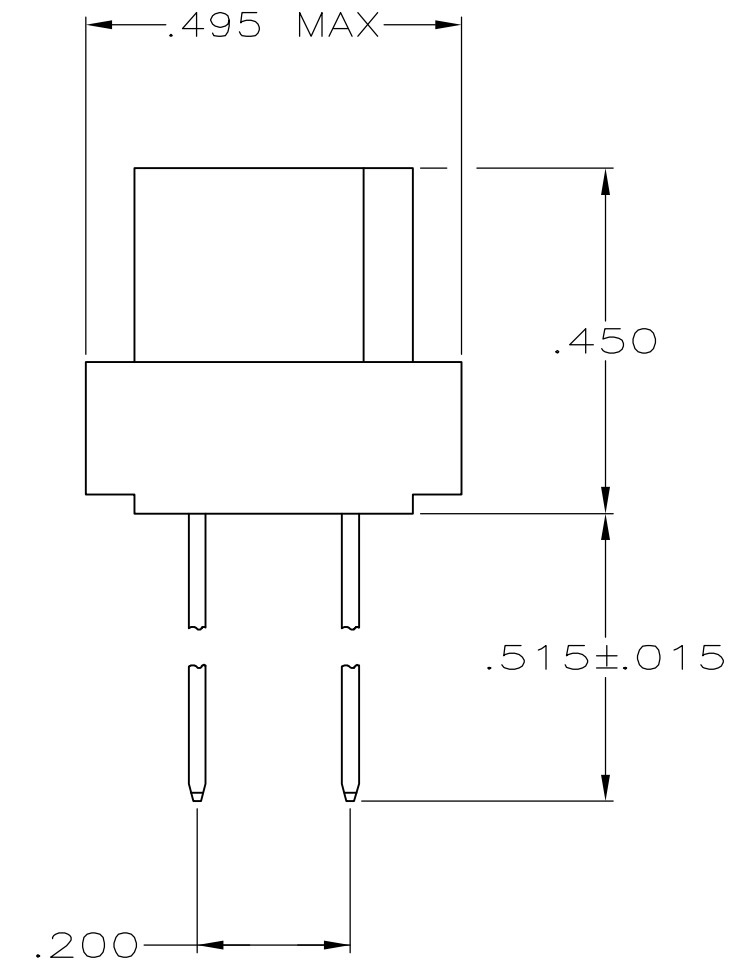
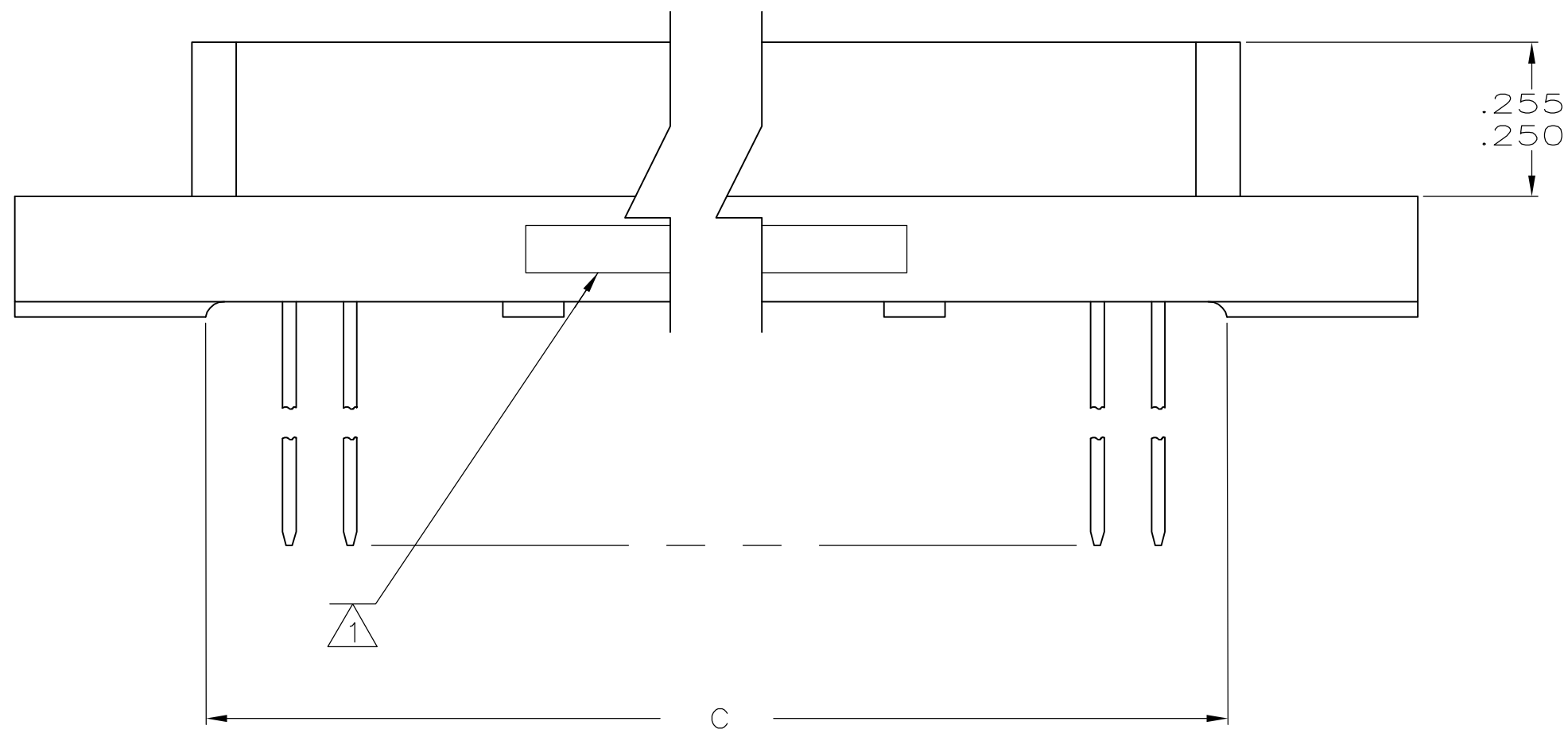


THIS DRAWING IS UNPUBLISHED. RELEASED FOR PUBLICATION  
 © COPYRIGHT BY TYCO ELECTRONICS CORPORATION. ALL RIGHTS RESERVED.

LOC		DIST		REVISIONS			
P	LTR	DESCRIPTION		DATE	DWN	APVD	
DF	F0	C		REV PER ECO 05-013558	12DEC05	VF	CT



- 1 (CUSTOMER P/N), AMP, DATE CODE, AMP P/N, MARKED THIS AREA.
- 2 HOUSING MATERIAL: POLYPHENYLENE SULFIDE, GST-40F PER MIL-M-24519.
- 3 CONTACT MATERIAL: BERYLLIUM COPPER (BeCu) OR COPPER-NICKEL-SILICON (CuNiSi).
- 4 CONTACT FINISH: .000030 GOLD OVER .000030 NICKEL IN CONTACT AREA .000150 MIN BRIGHT TIN-LEAD (93/7) ON POSTS.
- 5 LETTERS INDICATING OUTSIDE ROWS AND NUMBERS INDICATING END CAVITIES MARKED THIS AREA.
- 6 LINES INDICATING EVERY FIVE CAVITIES MARKED ON MATING FACE.
- 7. ONLY ROWS A AND C ARE LOADED WITH CONTACTS.



3.900	39	4.024	4.125	4.450	4.750	120	(774444-6)	445458-2
5.900	59	6.024	6.125	6.450	6.750	180	(774444-5)	445458-1
F	E	D	C	B	A	POS	CUSTOMER P/N	PART NO

THIS DRAWING IS A CONTROLLED DOCUMENT.

DIMENSIONS: INCHES	TOLERANCES UNLESS OTHERWISE SPECIFIED:	DWN T. SHUEY 8-5-88	Tyco Electronics Corporation Harrisburg, PA 17105-3608
	0 PLC ± -	CHK D. MILLER 9-13-88	
	1 PLC ± -	APVD T. SHUEY 8-15-88	
	2 PLC ± -	PRODUCT SPEC	
MATERIAL	FINISH	APPLICATION SPEC	NAME
		WEIGHT	RECEPTACLE ASSEMBLY, 3-ROW BOX 100 C/L, W/MOUNTING EARS AND 2-HIGH WIRE WRAP POSTS
			SIZE CAGE CODE DRAWING NO RESTRICTED TO
			A2 00779 C=445458
		CUSTOMER DRAWING	SCALE 4:1 SHEET 1 of 1 REV C