

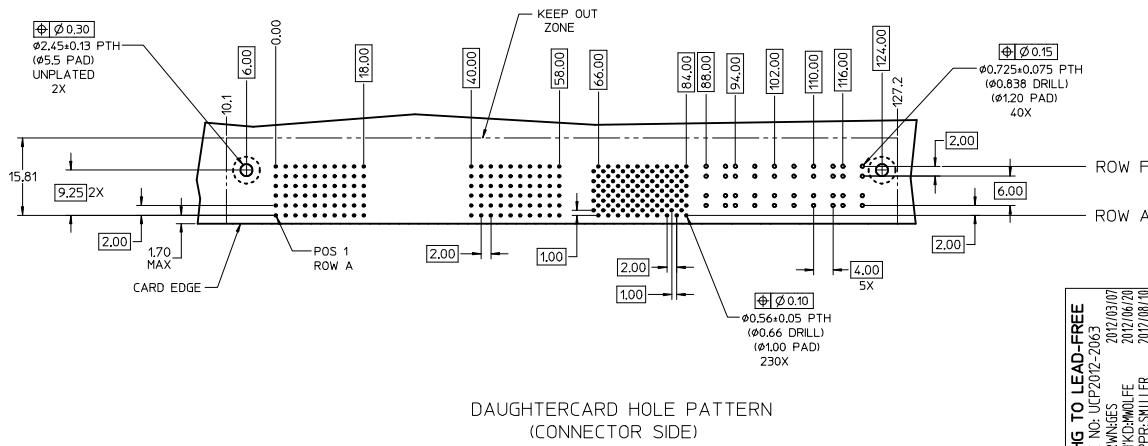
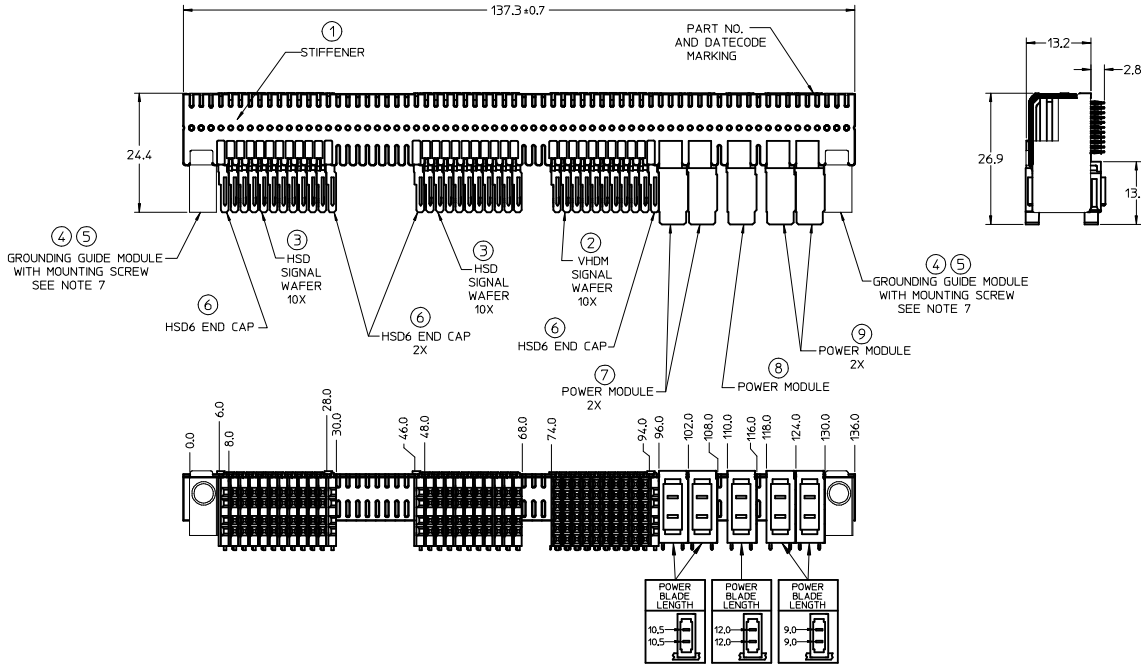
CUSTOMER: BROADBUS TECHNOLOGIES

NOTES: (UNLESS OTHERWISE SPECIFIED)

1. MATERIALS: HOUSING - LIQUID CRYSTAL POLYMER (LCP)  
GLASS-FILLED, UL94V-0, BLACK  
TERMINALS - HIGH PERFORMANCE COPPER ALLOY  
STIFFENER - STAINLESS STEEL
2. FINISH: SELECTIVE GOLD (Au) IN CONTACT AREA,  
0.76 MICROMETERS MINIMUM THICKNESS; SELECTIVE  
MATTE TIN (Sn) ON PCB TAILS,  
NICKEL (Ni) UNDERPLATE OVERALL.
3. REFER TO MOLEX PRODUCT SPECIFICATION PS-74031-999 FOR  
PERFORMANCE SPECIFICATIONS.
4. REFER TO MOLEX DOCUMENT SD-74031-002 FOR ADDITIONAL  
DETAIL ON THE VHDM SIGNAL WAFER.
5. REFER TO MOLEX DOCUMENT SD-74881-002 FOR ADDITIONAL  
DETAIL ON THE HSD SIGNAL WAFER.
6. REFER TO MOLEX DOCUMENT SD-75885-001 FOR ADDITIONAL  
DETAIL ON THE POWER MODULE.
7. MOUNTING SCREWS WILL BE BAGGED WITH EACH CONNECTOR.
8. PARTS ARE PACKAGED IN TUBES PER PK-70873-5040.
9. REFER TO MOLEX DOCUMENT SD-74039-028 FOR ADDITIONAL  
DETAIL ON THE GROUNDED GUIDE MODULE.
10. THIS PART CONFORMS TO CLASS 'B' REQUIREMENT OF MOLEX  
COSMETIC SPECIFICATION PS-45499-002.

LEAD-FREE  
PLATING

ITEM	PART NUMBER	DESCRIPTION	QTY
1	74036-0137	STIFFENER	1
2	74031-1001	SIGNAL WAFER - VHDM6, LF	10
3	74881-1001	SIGNAL WAFER - HSD6, LF	20
4	74039-6816	GROUNDED GUIDE MODULE	2
5	73774-0000	GRND/JOINER MNTG SCREW	2
6	74888-0001	END CAP - HSD6	4
7	75885-6330	POWER MODULE, LF	2
8	75885-6440	POWER MODULE, LF	1
9	75885-6220	POWER MODULE, LF	2



<b>CHG TO LEAD-FREE</b> IEC NO: UICP2012-2063 DRAWINGS: 2012/03/07 CHKD: WOLFE 2012/06/20 APPR: SMILLER 2012/08/10	QUALITY SYMBOLS	GENERAL TOLERANCES (UNLESS SPECIFIED)	DIMENSION STYLE	SCALE	DESIGN UNITS	THIRD ANGLE PROJECTION																		
	$\nabla=0$ $\nabla=0$ $\nabla=0$	<table border="1"> <tr> <th></th> <th>mm</th> <th>INCH</th> </tr> <tr> <td>4 PLACES</td> <td>±---</td> <td>±---</td> </tr> <tr> <td>3 PLACES</td> <td>±---</td> <td>±---</td> </tr> <tr> <td>2 PLACES</td> <td>±0.25</td> <td>±---</td> </tr> <tr> <td>1 PLACE</td> <td>±0.38</td> <td>±---</td> </tr> <tr> <td>0 PLACE</td> <td>±</td> <td>±</td> </tr> </table>		mm	INCH	4 PLACES	±---	±---	3 PLACES	±---	±---	2 PLACES	±0.25	±---	1 PLACE	±0.38	±---	0 PLACE	±	±	MM ONLY	1:1	METRIC	
		mm	INCH																					
	4 PLACES	±---	±---																					
3 PLACES	±---	±---																						
2 PLACES	±0.25	±---																						
1 PLACE	±0.38	±---																						
0 PLACE	±	±																						
ANGULAR ±1/2° DRAFT WHERE APPLICABLE MUST REMAIN WITHIN DIMENSIONS	DRAWN BY: LAURX 03/03/28 CHECKED BY: MARTIN 03/03/28 APPROVED BY: BIXLER 03/03/28	MATERIAL NO: <b>74886-0016</b> DOCUMENT NO: <b>SD-74886-016</b>	TITLE: <b>6 ROW HSD HYBRID, LF DAUGHTERCARD SALES DRAWING</b> 	SHEET NO: 1 OF 1																				