

Table 2 of length tolerances

Over	Up to and including	Tolerance (+)
0	305	+19
305	915	+45
915	1830	+56
1830	3660	+89
3660	7320	+165
7320	14640	+317
14640	30500	+622
30500	>	+2% of length

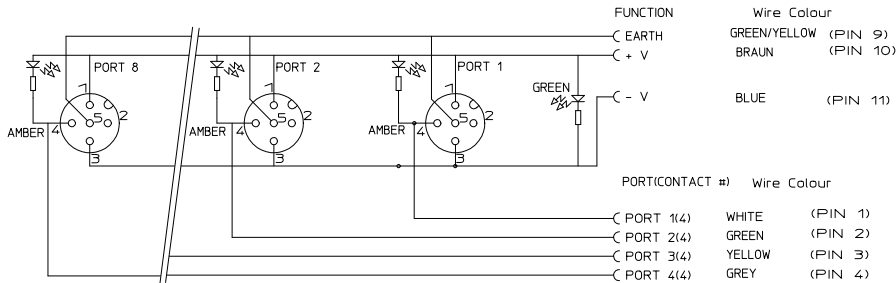
ITEM	QTY	DESCRIPTION	MATERIAL
1	1	HOUSING	PBT YELLOW
2	4	SHELL	NICKEL PLATED BRASS
3	2	PROTECTING CAB	PP
4	4	O-RING	VITRON
5	5	FIBER-OPTIC	GRILLAMID
6	1	PCB	-
7	16	CONTACT	GOLD PLATED BRASS
8	1	CABLE PLATE	PBT YELLOW
9	5	LABEL	ABS
10	-	POTTING MATERIAL	RESIN PU55FL
11	-	POTTING MATERIAL	RESIN HARDENER
12	-	SEE TABLE 1	-
13	1	OVERMOLDING	PVC YELLOW
14	1	COUPLING NUT	AL BLACK ANODISED
15	1	INSERT	PVC YELLOW
16	12	CONTACT	GOLD PLATED BRASS

<b>ENTER DESCRIPTION</b> EC NO: IPG2012-0918 DRW:ULETTENMEIER 2012/05/22 CHK:RSILLER 2012/05/23 APPR:CBURGER 2012/05/29	QUALITY SYMBOLS ▽=0 ∇=0	GENERAL TOLERANCES (UNLESS SPECIFIED) mm INCH 4 PLACES ± --- ± --- 3 PLACES ± --- ± --- 2 PLACES ± 0.1 ± --- 1 PLACE ± 0.2 ± --- ANGULAR ± 2 °	DIMENSION STYLE MM ONLY DRAWN BY DATE ULETTENMEIER 2011/11/07 CHECKED BY DATE ZISMAYILOV 2011/12/14 APPROVED BY DATE CBURGER 2011/12/20	SCALE 1:1 DESIGN UNITS METRIC THIRD ANGLE PROJECTION	TITLE MPIS M12 MC PNP NPN 4P 4PT 12P AC FE MA STR PUR PVC MA XM
	DRAFT WHERE APPLICABLE MUST REMAIN WITHIN DIMENSIONS		MATERIAL NO. SEE TABLE 1	DOCUMENT NO. SD-120005-019	SHEET NO. 1 OF 2
	THIS DRAWING CONTAINS INFORMATION THAT IS PROPRIETARY TO MOLEX INCORPORATED AND SHOULD NOT BE USED WITHOUT WRITTEN PERMISSION				
	MOLEX INCORPORATED				

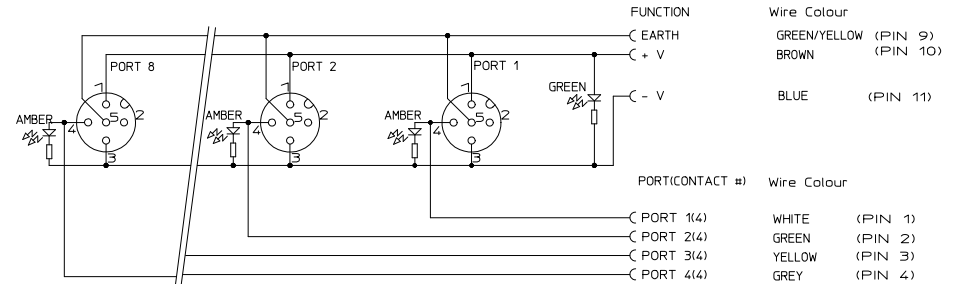
TABLE 1

MOLEX PN	ENG. NO.	DESCRIPTION	CABLE	L - lenght[M]
1200051033	BTY406N-FBP	MPIS M12 MC NPN 4P 4PT 12P AC FE STR PUR MA STR 0,3M	CABLE PUR BLK 3X0.75 8X0.34 SM	0.3
1200051034	BTY406P-FBP	MPIS M12 MC PNP 4P 4PT 12P AC FE STR PUR MA STR 0,3M	CABLE PUR BLK 3X0.75 8X0.34 SM	0.3

Wiring Diagram NPN



Wiring Diagram PNP



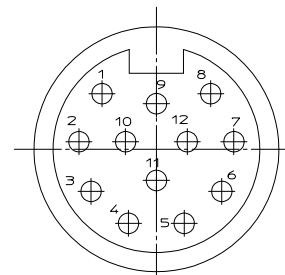
GENERAL CHARACTERISTICS:

NOMINAL VOLTAGE: 10-30 V DC  
 RATED VOLTAGE: 32 V EFF.  
 POLUTION DEGREE: 3  
 RATED CURRENT: 4 A PER PORT / 12 A MAX: TOTAL  
 CONTACT RESISTANCE: ≤ 5 mOHM  
 ISULATION RESISTANCE: > 10<sup>9</sup> OHM  
 IP DEGREE OF PROTECTION: IP 68 REFER TO TEST SUMMARY TS-120005-016

TEMPERATURE RANGE: WITH PUR CABLE (CABLE PUR BLK 3X0.75 4X0.34 SM) -5°C / +90°C  
 WITH PVC CABLE (ROVV 19AWGx3C+22AWGx4C) -10°C / +80°C

FLAMMABYLITY: Insert: V0  
 HOUSING: V0

PACKAGING: CABLE LENGTH OVER 5M: BAG, STRINGED, 450X500  
 P/N: 908487016  
 CABLE LENGTH UP TO 5M: BAG 200X300X 05  
 P/N: 908486937



CONNECTOR FACE VIEW

ENTER DESCRIPTION EC NO: IPG2012-0918 DRW:ULETTENMEIER 2012/05/22 CHK:DRSTILLER 2012/05/23 APPR:CBURGER 2012/05/29	QUALITY SYMBOLS	GENERAL TOLERANCES (UNLESS SPECIFIED)	DIMENSION STYLE	SCALE	DESIGN UNITS	THIRD ANGLE PROJECTION	
	▼=0 ◻=0	mm INCH 4 PLACES ± --- ± --- 3 PLACES ± --- ± --- 2 PLACES ± 0.1 ± --- 1 PLACE ± 0.2 ± --- ANGULAR ± 2 °	MM ONLY	1:1	METRIC		
		DRAFT WHERE APPLICABLE MUST REMAIN WITHIN DIMENSIONS	DRAWN BY DATE ULETTENMEIER 2011/11/07 CHECKED BY DATE ZISMAYILOV 2011/12/14 APPROVED BY DATE CBURGER 2011/12/20	TITLE	MPIS M12 MC PNP NPN 4P 4PT 12P AC FE MA STR PUR PVC MA XM		
	A1		SEE TABLE 1	MATERIAL NO.	DOCUMENT NO.	MOLEX INCORPORATED SD-120005-019 SHEET NO. 2 OF 2	