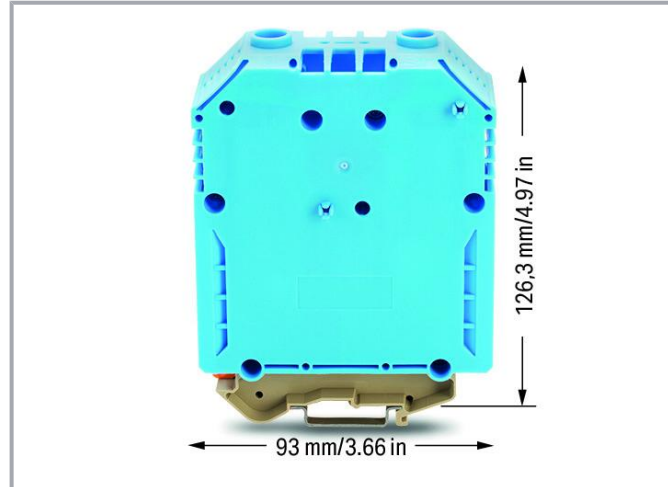


Data sheet | Item number: 883-2404

2-conductor through terminal block; 240 mm²; with screw-type connection;
240,00 mm²; blue

www.wago.com/883-2404



Data

Electrical data

Ratings per IEC/EN

Ratings per	IEC/EN 60947-7-1
Nominal voltage (III/3)	1000 V
Rated impulse voltage (III/3)	8 kV
Rated current	380 A
Legend (ratings)	(III / 3) ≙ Overvoltage category III / Pollution degree 3

Subject to changes. Please also observe the further product documentation!

WAGO GmbH & Co. KG
Hansastr. 27
32423 Minden
Phone: +49571 887-0 | Fax: +49571 887-169
Email: info.de@wago.com | Web: www.wago.com

Do you have any questions about our products?
We are always happy to take your call at +49 (571) 887-44222.



Ratings per UL 1059

Approvals per	UL 1059
Rated voltage UL (Use Group B)	600 V
Rated current UL (Use Group B)	370 A
Rated voltage UL (Use Group C)	600 V
Rated current UL (Use Group C)	370 A

Ratings per CSA

Approvals per	CSA 22.2 No 158
Rated voltage CSA (Use Group C)	600 V
Rated current CSA (Use Group C)	370 A

Power loss

Power loss, per pole (potential)	11.552 W
Rated current I_N for specified power loss	380 A
Resistance value for specified, current-dependent power loss	8 Ω

Connection data

Connection points	2
Total number of potentials	1
Number of levels	1
Number of jumper slots	2

Connection 1

Connection technology	Screw connection
Actuation type	T-wrench; 8 mm
Connectable conductor materials	Copper Aluminum
Connectable conductor materials (note)	<p>Terminating Aluminum Conductors</p> <p>Both restrictions and application notes must be observed when terminating aluminum conductors. These instructions can be found in the WAGO Webshop under "Downloads – Documentation – Additional Information: Terminating Aluminum Conductors."</p>
Nominal cross-section	240 mm ²
Solid conductor	70 ... 240 mm ² / 2/0 AWG ... 500 kcmil
Stranded conductor	70 ... 240 mm ² / 2/0 AWG ... 500 kcmil

Subject to changes. Please also observe the further product documentation!



Fine-stranded conductor	70 ... 240 mm ² / 2/0 AWG ... 500 kcmil
Fine-stranded conductor; with insulated ferrule	70 ... 185 mm ² / 2/0 AWG ... 350 kcmil
Strip length	38 mm / 1.5 inches
Wiring direction	Side-entry wiring
Screw thread	M10

Physical data

Width	36 mm / 1.417 inches
Height	93 mm / 3.661 inches
Depth from upper-edge of DIN-rail	126.3 mm / 4.972 inches

Mechanical Data

Tightening torque	10 ... 20 Nm
Mounting type	DIN-35/32 rail
Marking level	Side marking

Material Data

Note (material data)	Information on material specifications can be found here
Color	blue
Insulation material	Polyamide (PA66)
Flammability class per UL94	V2
Weight	352.4 g

Environmental requirements

Continuous operating temperature	-35 ... +105 °C
----------------------------------	-----------------

Commercial data

ETIM 8.0	EC000897
ETIM 7.0	EC000897
PU (SPU)	5 pcs
Packaging type	box
Country of origin	DE
GTIN	4055143940474
Customs tariff number	85369010000

Subject to changes. Please also observe the further product documentation!

WAGO GmbH & Co. KG
 Hansastr. 27
 32423 Minden
 Phone: +49571 887-0 | Fax: +49571 887-169
 Email: info.de@wago.com | Web: www.wago.com

Do you have any questions about our products?
 We are always happy to take your call at +49 (571) 887-44222.

Environmental Product Compliance

RoHS Compliance Status

Compliant, No Exemption

Optional accessories

Tool

Operating tool

**Item no.: 285-172**

Allen wrench; with a partially insulated shaft; green

www.wago.com/285-172**Item no.: 285-173**

Allen wrench; with a partially insulated shaft; with anti-rotation protection; green

www.wago.com/285-173

Marking accessories

Marker

**Item no.: 2009-115/000-002**

WMB-Inline; for Smart Printer; 1500 pieces on roll; stretchable 5 - 5.2 mm; plain; snap-on type; yellow

www.wago.com/2009-115/000-002**Item no.: 2009-115/000-007**

WMB-Inline; for Smart Printer; 1500 pieces on roll; stretchable 5 - 5.2 mm; plain; snap-on type; gray

www.wago.com/2009-115/000-007**Item no.: 2009-115/000-017**

WMB-Inline; for Smart Printer; 1500 pieces on roll; stretchable 5 - 5.2 mm; plain; snap-on type; light green

www.wago.com/2009-115/000-017**Item no.: 2009-115/000-023**

WMB-Inline; for Smart Printer; 1500 pieces on roll; stretchable 5 - 5.2 mm; plain; snap-on type; green

www.wago.com/2009-115/000-023**Item no.: 2009-115/000-024**

WMB-Inline; for Smart Printer; 1500 pieces on roll; stretchable 5 - 5.2 mm; plain; snap-on type; violet

www.wago.com/2009-115/000-024**Item no.: 2009-115**

WMB-Inline; for Smart Printer; 1500 pieces on roll; stretchable 5 - 5.2 mm; plain; snap-on type; white

www.wago.com/2009-115**Item no.: 793-5501/000-007**

WMB marking card; as card; for terminal block width 5 - 17.5 mm; stretchable 5 - 5.2 mm; plain; snap-on type; gray

www.wago.com/793-5501/000-007

Subject to changes. Please also observe the further product documentation!

WAGO GmbH & Co. KG

Hansastr. 27

32423 Minden

Phone: +49571 887-0 | Fax: +49571 887-169

Email: info.de@wago.com | Web: www.wago.com

Do you have any questions about our products?

We are always happy to take your call at +49 (571) 887-44222.



Item no.: 793-5501/000-012

WMB marking card; as card; for terminal block width 5 - 17.5 mm; stretchable 5 - 5.2 mm; plain; snap-on type; orange

www.wago.com/793-5501

/000-012



Item no.: 793-5501/000-014

WMB marking card; as card; for terminal block width 5 - 17.5 mm; stretchable 5 - 5.2 mm; plain; snap-on type; brown

www.wago.com/793-5501

/000-014



Item no.: 793-5501/000-017

WMB marking card; as card; for terminal block width 5 - 17.5 mm; stretchable 5 - 5.2 mm; plain; snap-on type; light green

www.wago.com/793-5501

/000-017



Item no.: 793-5501/000-023

WMB marking card; as card; for terminal block width 5 - 17.5 mm; stretchable 5 - 5.2 mm; plain; snap-on type; green

www.wago.com/793-5501

/000-023



Item no.: 793-5501/000-024

WMB marking card; as card; for terminal block width 5 - 17.5 mm; stretchable 5 - 5.2 mm; plain; snap-on type; violet

www.wago.com/793-5501

/000-024



Item no.: 793-501/000-002

WMB marking card; as card; not stretchable; plain; snap-on type; yellow

www.wago.com/793-501

/000-002



Item no.: 793-501/000-007

WMB marking card; as card; not stretchable; plain; snap-on type; gray

www.wago.com/793-501

/000-007

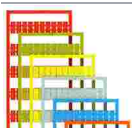


Item no.: 793-501/000-017

WMB marking card; as card; not stretchable; plain; snap-on type; light green

www.wago.com/793-501

/000-017

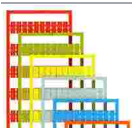


Item no.: 793-501/000-012

WMB marking card; as card; not stretchable; plain; snap-on type; orange

www.wago.com/793-501

/000-012



Item no.: 793-501/000-023

WMB marking card; as card; not stretchable; plain; snap-on type; green

www.wago.com/793-501

/000-023

Subject to changes. Please also observe the further product documentation!

WAGO GmbH & Co. KG

Hansastr. 27

32423 Minden

Phone: +49571 887-0 | Fax: +49571 887-169

Email: info.de@wago.com | Web: www.wago.com

Do you have any questions about our products?

We are always happy to take your call at +49 (571) 887-44222.



Item no.: 793-501/000-006
WMB marking card; as card; not stretchable; plain; snap-on type; blue

www.wago.com/793-501/000-006



Item no.: 793-501/000-005
WMB marking card; as card; not stretchable; plain; snap-on type; red

www.wago.com/793-501/000-005



Item no.: 793-501
WMB marking card; as card; not stretchable; plain; snap-on type; white

www.wago.com/793-501



Item no.: 793-501/000-024
WMB marking card; as card; not stretchable; plain; snap-on type; violet

www.wago.com/793-501/000-024



Item no.: 793-5501/000-005
WMB marking card; as card; for terminal block width 5 - 17.5 mm; stretchable 5 - 5.2 mm; plain; snap-on type; red

www.wago.com/793-5501/000-005



Item no.: 793-5501/000-002
WMB marking card; as card; for terminal block width 5 - 17.5 mm; stretchable 5 - 5.2 mm; plain; snap-on type; yellow

www.wago.com/793-5501/000-002



Item no.: 793-5501/000-006
WMB marking card; as card; for terminal block width 5 - 17.5 mm; stretchable 5 - 5.2 mm; plain; snap-on type; blue

www.wago.com/793-5501/000-006



Item no.: 793-5501
WMB marking card; as card; for terminal block width 5 - 17.5 mm; stretchable 5 - 5.2 mm; plain; snap-on type; white

www.wago.com/793-5501



Item no.: 2009-115/000-012
WMB-Inline; for Smart Printer; 1500 pieces on roll; stretchable 5 - 5.2 mm; plain; snap-on type; orange

www.wago.com/2009-115/000-012



Item no.: 2009-115/000-006
WMB-Inline; for Smart Printer; 1500 pieces on roll; stretchable 5 - 5.2 mm; plain; snap-on type; blue

www.wago.com/2009-115/000-006



Item no.: 2009-115/000-005
WMB-Inline; for Smart Printer; 1500 pieces on roll; stretchable 5 - 5.2 mm; plain; snap-on type; red

www.wago.com/2009-115/000-005

Mounting

Mounting accessories

Subject to changes. Please also observe the further product documentation!



Item no.: 249-117
Screwless end stop; 10 mm wide; for DIN-rail 35 x 15 and 35 x 7.5; gray

www.wago.com/249-117



Item no.: 249-197
Screwless end stop; 14 mm wide; for DIN-rail 35 x 15 and 35 x 7.5; gray

www.wago.com/249-197

Connector

Insertion plate



Item no.: 883-2499
Insertion plate for flat cables; for 883 Series; 240 mm²; silver-colored

www.wago.com/883-2499

Voltage tap

Power tap



Item no.: 883-1230
Power tap; 10,00 mm²; beige

www.wago.com/883-1230

Protective warning marker

Cover



Item no.: 883-2486
Protective warning marker; with high-voltage symbol; yellow

www.wago.com/883-2486

Jumpers

Jumper



Item no.: 883-2442
Jumper; 2-way; insulated; yellow

www.wago.com/883-2442



Item no.: 883-2443
Jumper; 3-way; insulated; yellow

www.wago.com/883-2443

Carrier rail

Mounting accessories



Item no.: 210-197
Steel carrier rail; 35 x 15 mm; 1.5 mm thick; 2 m long; slotted; similar to EN 60715; silver-colored

www.wago.com/210-197



Item no.: 210-198
Copper carrier rail; 35 x 15 mm; 2.3 mm thick; 2 m long; unslotted; according to EN 60715; copper-colored

www.wago.com/210-198



Item no.: 210-504
Steel carrier rail; 35 x 7.5 mm; 1 mm thick; 2 m long; slotted; galvanized; according to EN 60715; silver-colored

www.wago.com/210-504



Item no.: 210-505
Steel carrier rail; 35 x 7.5 mm; 1 mm thick; 2 m long; unslotted; galvanized; according to EN 60715; silver-colored

www.wago.com/210-505

Item no.: 210-506

Subject to changes. Please also observe the further product documentation!

	Steel carrier rail; 35 x 15 mm; 1.5 mm thick; 2 m long; unslotted; galvanized; similar to EN 60715; silver-colored	www.wago.com/210-506
	Item no.: 210-508 Steel carrier rail; 35 x 15 mm; 1.5 mm thick; 2 m long; slotted; galvanized; similar to EN 60715; silver-colored	www.wago.com/210-508
	Item no.: 210-113 Steel carrier rail; 35 x 7.5 mm; 1 mm thick; 2 m long; unslotted; according to EN 60715; silver-colored	www.wago.com/210-113
	Item no.: 210-118 Steel carrier rail; 35 x 15 mm; 2.3 mm thick; 2 m long; unslotted; according to EN 60715; silver-colored	www.wago.com/210-118
	Item no.: 210-112 Steel carrier rail; 35 x 7.5 mm; 1 mm thick; 2 m long; slotted; according to EN 60715; "Hole width 25 mm; silver-colored	www.wago.com/210-112
	Item no.: 210-114 Steel carrier rail; 35 x 15 mm; 1.5 mm thick; 2 m long; unslotted; similar to EN 60715; silver-colored	www.wago.com/210-114
	Item no.: 210-115 Steel carrier rail; 35 x 7.5 mm; 1 mm thick; 2 m long; slotted; according to EN 60715; "Hole width 18 mm; silver-colored	www.wago.com/210-115

Downloads

Documentation

Bid Text

883-2404	docx	Download
X81 - Datei	14.1 kB	

883-2401	xml	Download
docx - Datei	5.3 kB	

Additional Information

Technical Section	pdf	Download
Technical explanations	2.2 MB	

Aluminum Conductors	pdf	Download
Terminating Aluminum Conductors	85.1 kB	

CAD/CAE-Data

CAD data

2D/3D Models 883-2404

Subject to changes. Please also observe the further product documentation!

ZUKEN Portal 883-2404

[URL](#) [Download](#)

CAE data

ZUKEN Portal 883-2404

[URL](#) [Download](#)

EPLAN Data Portal 883-2404

[URL](#) [Download](#)

Environmental Product Compliance

Compliance Search

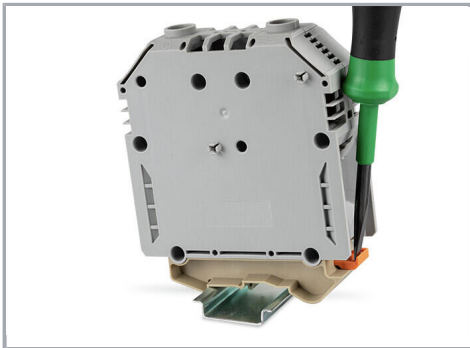
Environmental Product Compliance 883-2404

[URL](#) [Download](#)

2-conductor through terminal block; 240 mm²; with screw-type connection; 240,00 mm²; blue

Installation Notes

Installation



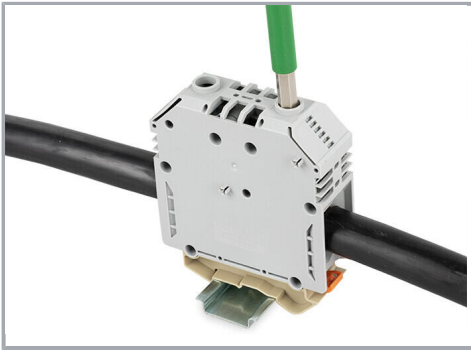
Mounting and Removing Through Terminal Blocks

Mounting is performed by simply snapping the terminal block onto the DIN-rail. The fixed snap-in foot is put on first.

Removal is performed by pushing back the movable snap-in foot and simultaneously tilting it off the rail.

Conductor termination

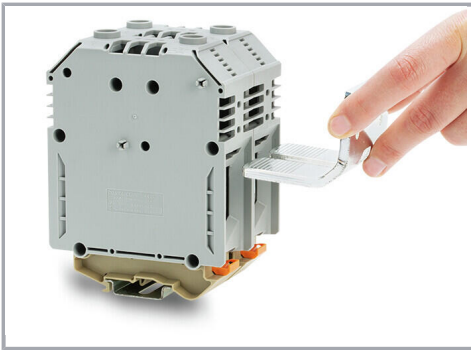
Subject to changes. Please also observe the further product documentation!



Conductor Termination and Clamping Point Actuation

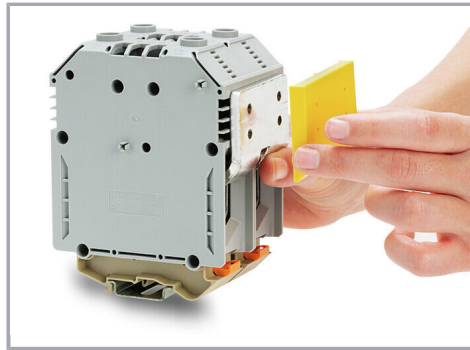
The stripped conductor is inserted into the clamping unit until it hits the backstop. By turning the screw to the right with a 8 mm T-wrench, the conductor is indirectly pressed against the current bar via the clamping bracket.

Commoning



Commoning

Step 1: Insert the 2- or 3-way jumper into the conductor entry to connect adjacent terminal blocks.



Commoning

Step 2: Mount the yellow insulating cap and snap it to the housing to position the jumper in the clamping unit.

Subject to changes. Please also observe the further product documentation!



Commoning

Step 3: By tightening the screw in the actuation slot, the jumper is secured in the conductor entry. If required, a conductor can also be inserted into the conductor entry and clamped together with the jumper.

A multiple potential distribution is possible due to the conductor entry on both sides. The jumpers are designed for the rated current of the screw terminal block.

Cover

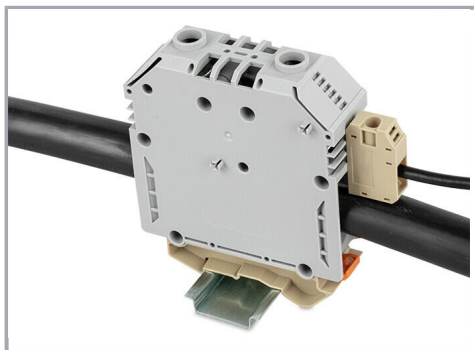


Protective Warning Marker

The warning covers marked with a lightning arrow (high voltage) are snapped onto the screw terminal block from above and close the actuation slot. This safeguard prevents actuation of the clamping point under voltage and guarantees protection against accidental contact.

Power tap

Subject to changes. Please also observe the further product documentation!



Power Tap

The power tap is inserted into the slot above the conductor entry. The power tap is pressed indirectly against the current bar via the clamping bracket when the clamping point is actuated.

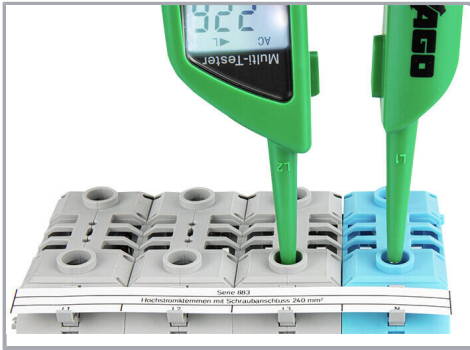


Insertion Plate

To connect flat cables, the insertion plates are mounted into the clamping bracket to compensate for the V-shaped geometry and provide a secure conductor connection.

Power tap

Subject to changes. Please also observe the further product documentation!



Testing

Voltage measurements can be performed via the screw heads in the actuation slot (e.g., via 2-pole 206-707 Voltage Tester).

Marking



Marking

The screw terminal blocks can be labeled quickly and easily with the WMB Inline marking system. The markers are inserted into the receptacles provided for this purpose.



Marking

The 2009-198 Marker Carrier allows marking strips to be used.

Subject to changes. Please also observe the further product documentation!