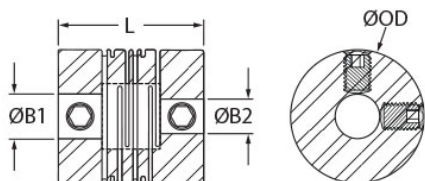




MRSS6-2-2-A

Ruland MRSS6-2-2-A, 2mm x 2mm Short Slit Coupling, Aluminum, Set Screw Style, 6.0mm OD, 9.4mm length



Description

Ruland MRSS6-2-2-A is a set screw style slit coupling with 2mm x 2mm bores, 6.0mm OD, and 9.4mm length. It is manufactured from a single piece of material and has two sets of intermittent slit cuts allowing for a maintenance-free coupling with high torsional stiffness in relation to comparable couplings, such as beam type. MRSS6-2-2-A has small dimensions and is designed to mate with micro motors, ball screws, and lead screws in high precision medical and scientific equipment. This short style slit coupling is ideal for compact installations where the long type may not fit. It is a suitable alternative to comparatively sized disc couplings due to the ability to accommodate all forms of misalignment whereas a single disc coupling has no accommodation for parallel misalignment. MRSS6-2-2-A is zero-backlash, has a balanced design for reduced vibration at speeds up to 70,000 RPM, and can accommodate all forms of misalignment with light bearing loads. It is manufactured by Reliance Precision Ltd. in their County Cork, Ireland factory from 7075 aluminum for lightweight and low inertia. MRSS6-2-2-A is inventoried by Ruland and RoHS3 and REACH compliant.

Product Specifications

Bore (B1)	2 mm	Small Bore (B2)	2 mm
B1 Max Shaft Penetration	4.8 mm	B2 Max Shaft Penetration	4.8 mm
Outer Diameter (OD)	6 mm	Bore Tolerance	+0.010 mm / -0.000 mm
Length (L)	9.4 mm	Slotted Set Screw	M1.2
Screw Material	18-8 300 Series Stainless Steel	Screw Finish	Bright
Number of Screws	4	Dynamic Torque Reversing	0.10 Nm
Angular Misalignment	1.7°	Dynamic Torque Non-Reversing	0.15 Nm
Parallel Misalignment	0.02 mm	Peak Torque	0.25 Nm
Axial Motion	0.06 mm	Torsional Stiffness	0.1 Nm/Deg
Moment of Inertia	0.00001002 lb-in ²	Maximum Speed	70,000 RPM
Full Bearing Support Required?	Yes	Zero-Backlash?	Yes
Balanced Design	Yes	Material Specification	7075-T651 Extruded and Drawn Aluminum Bar
Temperature	-110°F to 175°F (-80°C to 80°C)	Finish Specification	SurTec 650
Manufacturer	Reliance Precision Limited	Country of Origin	Ireland
Weight (lbs)	0.001300	UPC	634529296493
Tariff Code	8483.60.8000	UNSPC	31163003
Note 1	Performance ratings are for guidance only. The user must determine suitability for a particular application.		

Prop 65

⚠ WARNING This product can expose you to the chemical Nickel (metallic), known to the State of California to cause cancer. For more information go to www.P65Warnings.ca.gov.