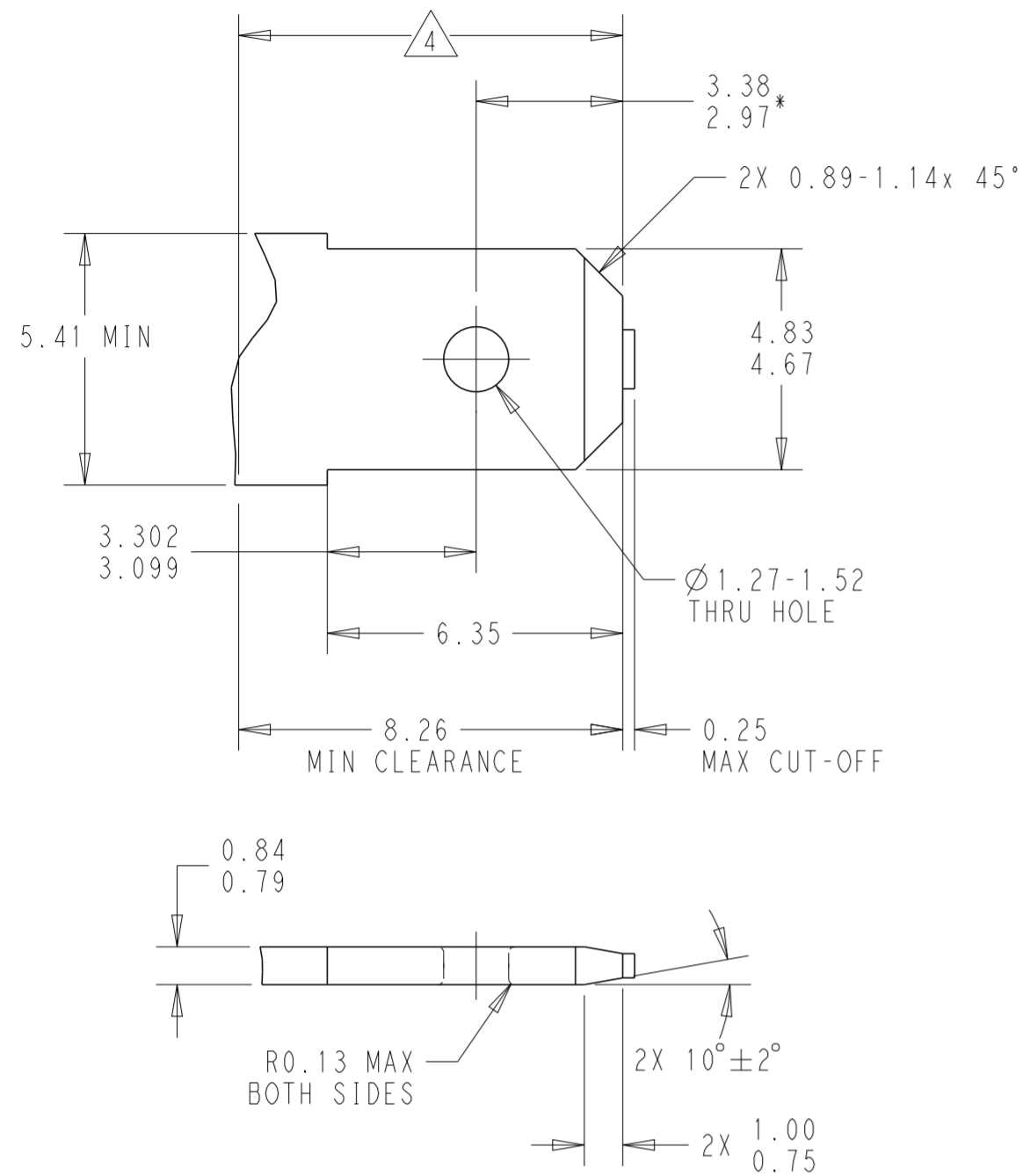
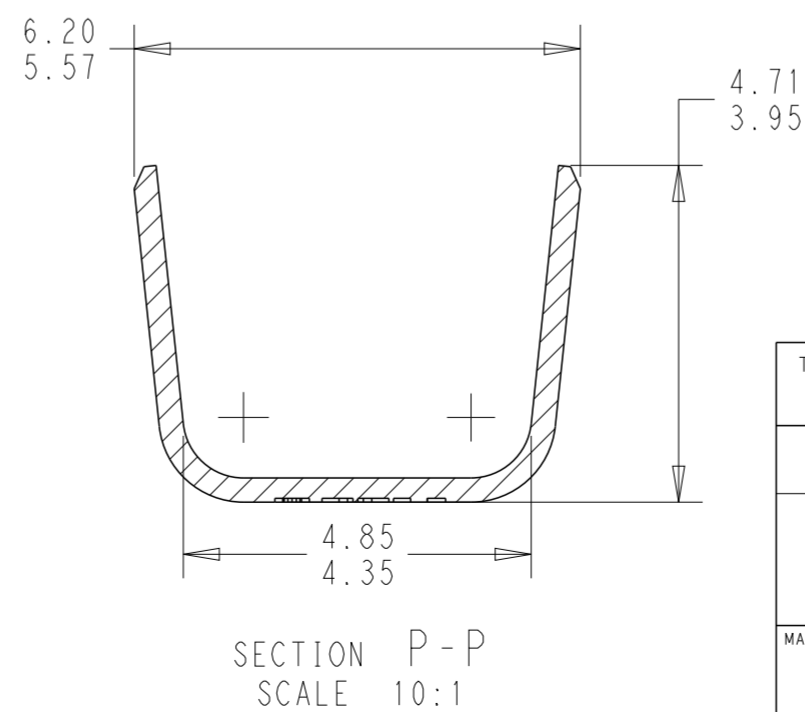
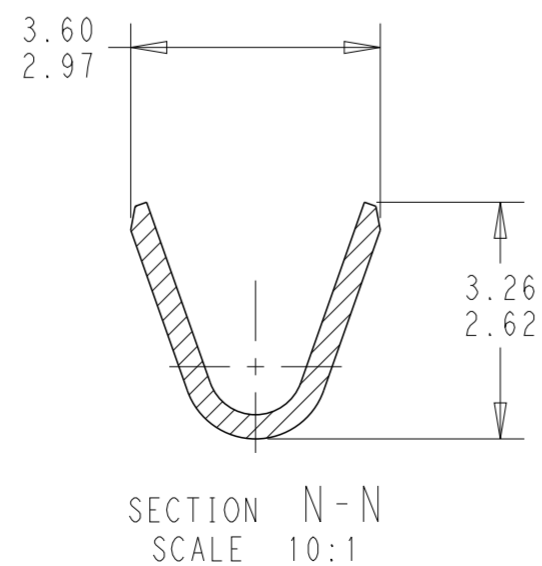


SUGGESTED MATING TAB

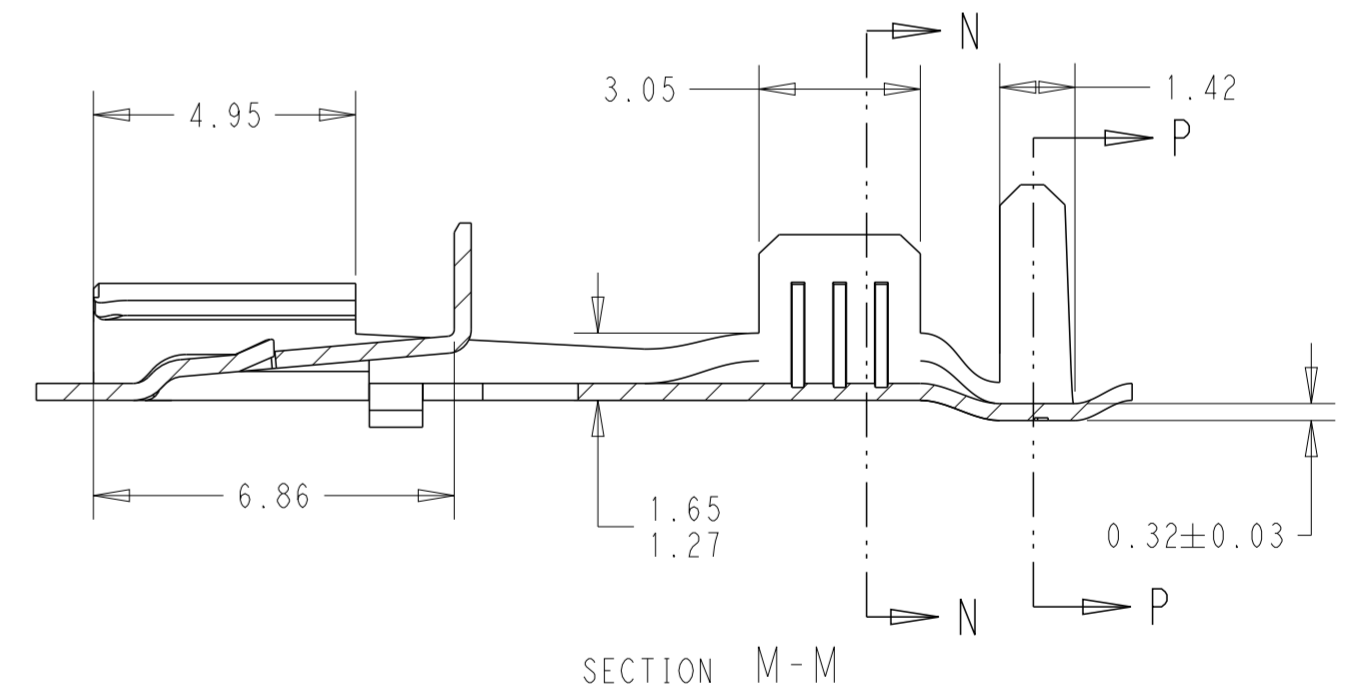
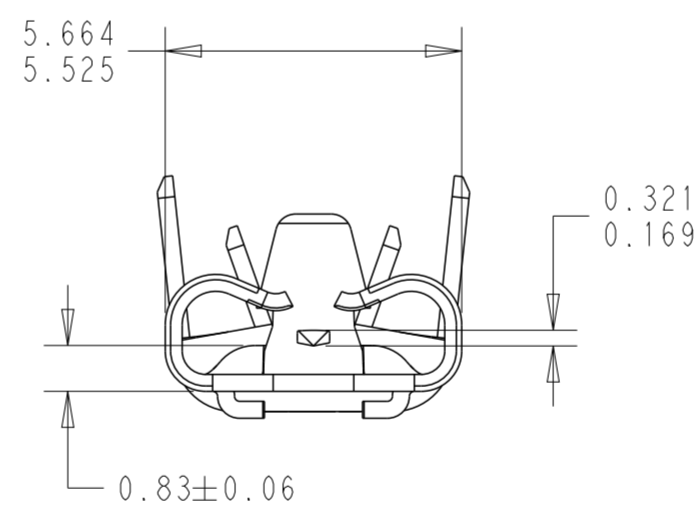
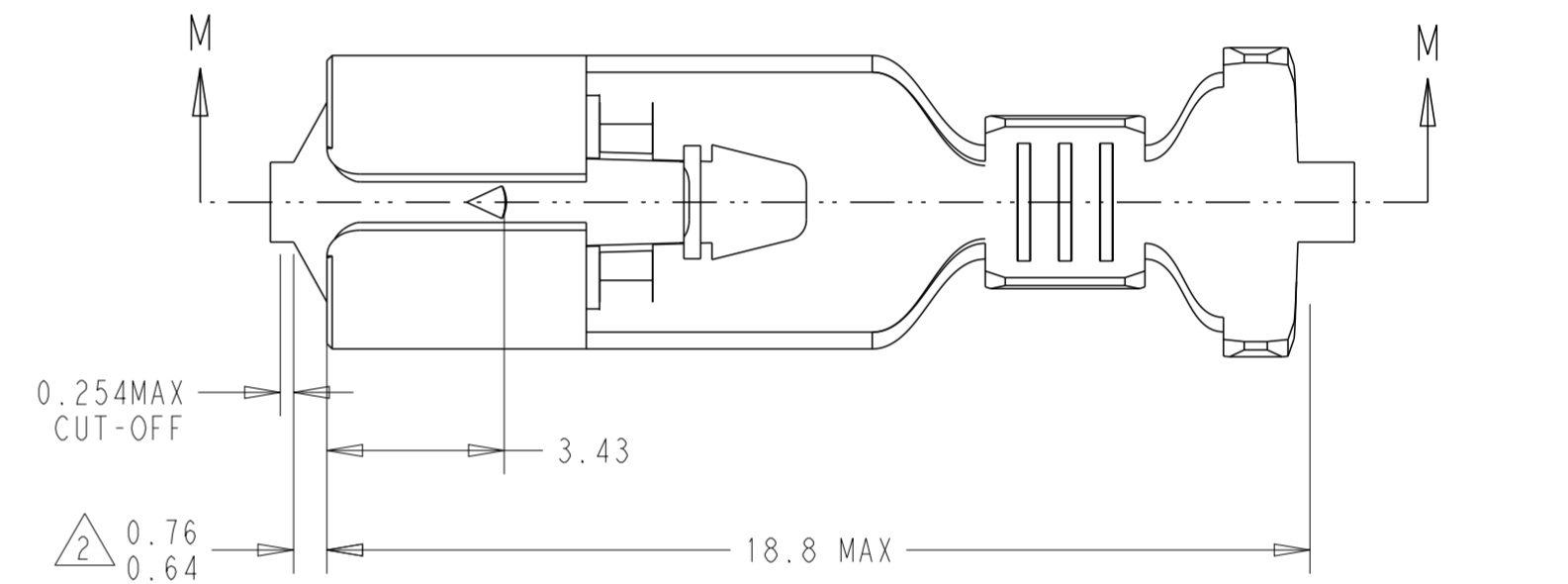


1. MATERIAL: #2 HARD BRASS OR NICKEL PLATED STEEL
 2. NO BURRS PERMISSIBLE AROUND HOLE
 3. TIN PLATING IS REQUIRED ON BRASS WHEN TERMINAL TEMPERATURE IS OVER 225°F
 4. MUST BE FLAT WITHIN 0.08 OVER THIS LENGTH
 5. HOLE MUST BE SYMMETRICAL ABOUT TAB \varnothing WITHIN 0.08.
- * TO BE USED ONLY WHEN SHOULDER IS ELIMINATED.



| REVISIONS | | | | |
|-----------|-----|----------------------------|-----------|--------|
| P | LTR | DESCRIPTION | DATE | APVD |
| A | | RELEASED PER ECN-21-101089 | 10MAR2021 | BKW KR |
| A1 | | REVISED PER ECN-22-173509 | 07SEP2022 | TDB KR |
| B | | REVISED PER ECN-23-193388 | 12JAN2023 | TDB KR |

1. CONTINUOUS STRIP ON REELS.
2. THIS DIMENSION MUST BE MAINTAINED FOR PROPER FUNCTION OF THE LATCHING MECHANISM.
3. WIRE RANGE: 20-16 AWG STRANDED SINGLE WIRE
(2) 22 AWG STRANDED DOUBLE WIRE
(2) 20 AWG STRANDED DOUBLE WIRE
4. INSULATION RANGE: 2.56-3.11 DIAMETER SINGLE WIRE
(2) 2.38 DIAMETER DOUBLE WIRE
(2) 2.56 DIAMETER DOUBLE WIRE
5. THIS TERMINAL MUST BE USED WITH A TIN PLATED TAB



| | | |
|---------------------|----------|-------------|
| UNPLATED $\Delta 5$ | BRASS | 2238279-1 |
| FINISH | MATERIAL | PART NUMBER |

| | | | | |
|---|-----------|-----------------------------|--|-----------------|
| THIS DRAWING IS A CONTROLLED DOCUMENT. | | DWN B. WEAVER 05 JUN 2020 | TE Connectivity NAME: RECEPTACLE, POSITIVE-LOCK, 187 SERIES | |
| DIMENSIONS: mm | | CHK K. RANDOLPH 05 JUN 2020 | | |
| TOLERANCES UNLESS OTHERWISE SPECIFIED: | | APVD W. MOYER 05 JUN 2020 | | |
| 0 PLC ± 1 PLC ± 2 PLC ± 3 PLC ±0.25 4 PLC ± ANGLES ± FINISH | | PRODUCT SPEC - | | |
| MATERIAL SEE TABLE | SEE TABLE | APPLICATION SPEC - | SIZE A2 | CAGE CODE 00779 |
| CUSTOMER DRAWING | | WEIGHT - | DRAWING NO. C-2238279 | RESTRICTED TO - |
| | | SCALE 7:1 | SHEET 1 OF 1 | REV B |