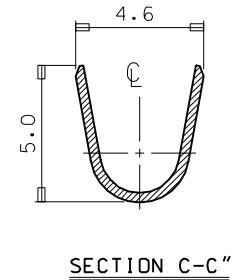
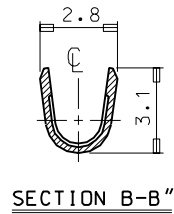
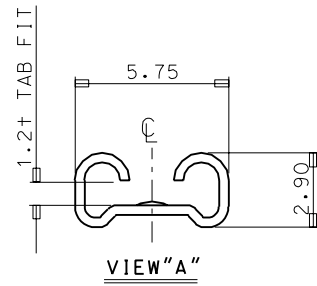
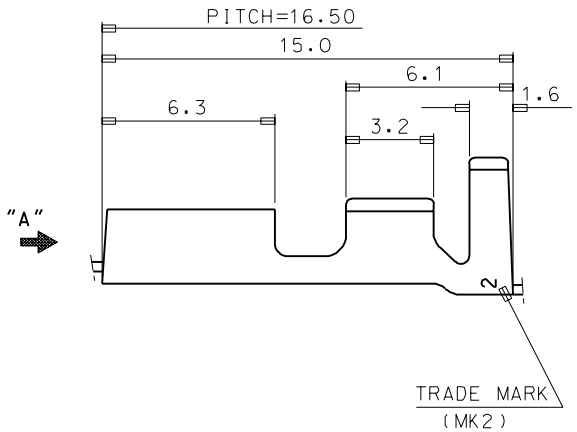
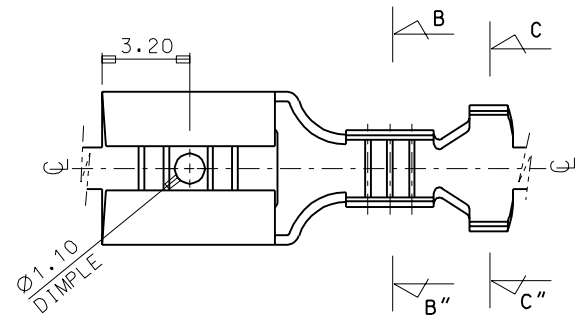


PROJECT NO. EDP NO. SD 35718-11\*0



- NOTES
1. MATERIAL: BRASS , 0.35THICKNESS
  2. FINISH: 35718-1100:UNPLATED  
35718-1110:POST-TIN PLATED

WIRE RANGE AWG #20-#16 (0.52-1.31mm <sup>2</sup> )					MATERIAL SEE NOTES	MOLEX-KOREA CO.,LTD. DRAWN BY W. Y. YANG CHK'D BY APP'D BY SCALE 6:1
INSULATION RANGE $\varnothing 2.6-3.5$	B	REVISED	95-007	95.1.17	GENERAL TOLERANCE DIMENSION : 1p1cs:±0.30 ANGLE : 2p1cs:±0.20	
DIE FEED: //	A	CAD REDRAWING	93-011	93.5.24	DIMENSION CLASSIFICATION ▽ : CRITICAL ▼ : MAJOR ( ) : REFERENCE	TITLE: .187 SLIP-ON REC'
APPLICATOR FEED: 16.5	LTR	REVISION RECORD	ECN	DATE	ASS'Y PART DESCRIPTION ENG. NO.	SHEET 1 of 1
O'TY/ REEL OR PACK 7,000 O'ty/Reel	REVISE ONLY ON CAD SYSTEM				//	ENG. NO. SD 35718-11*0