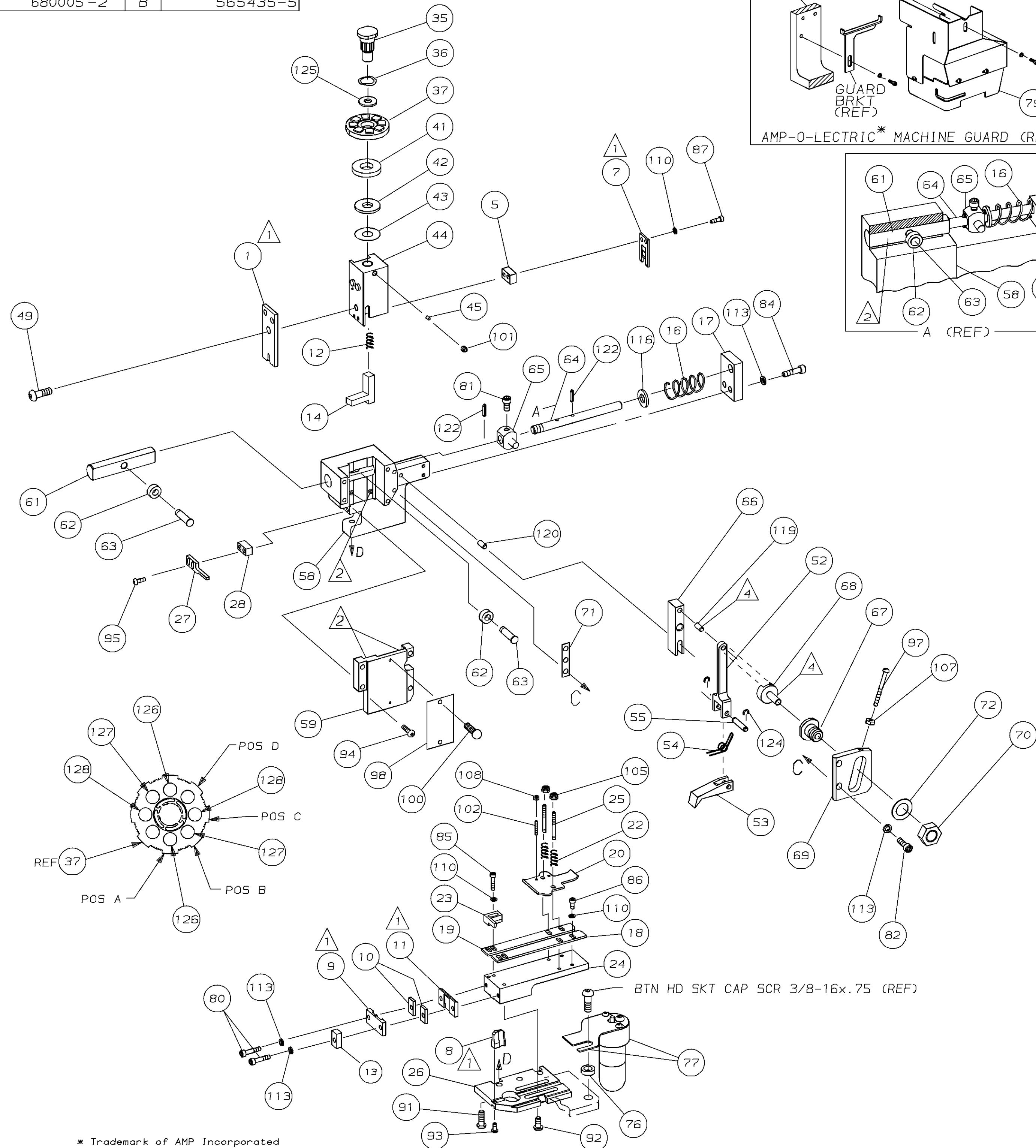
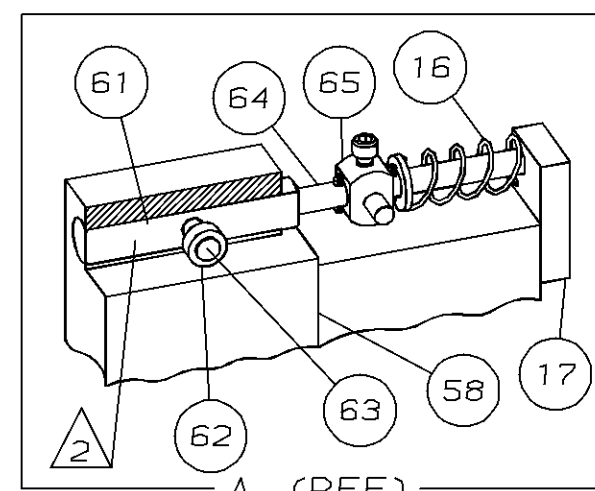
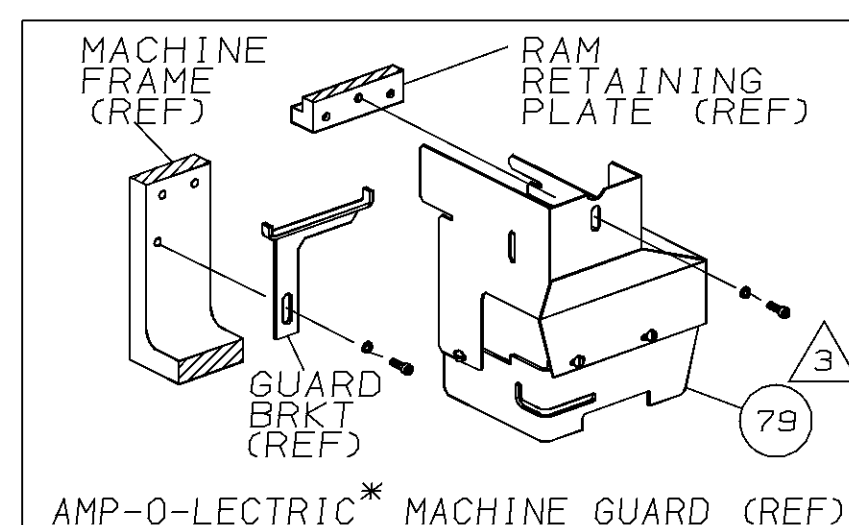
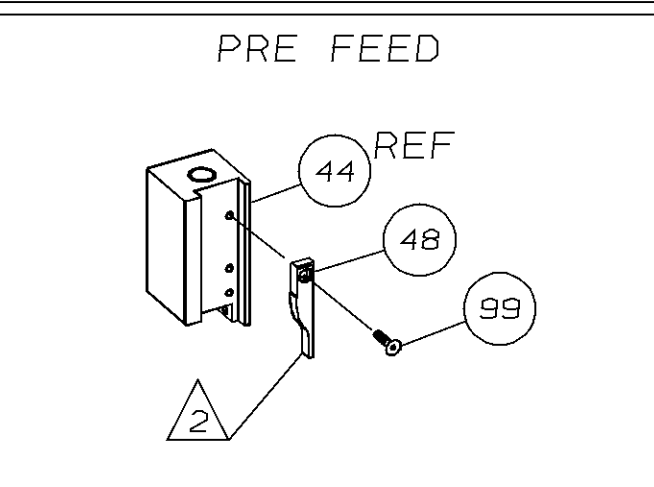
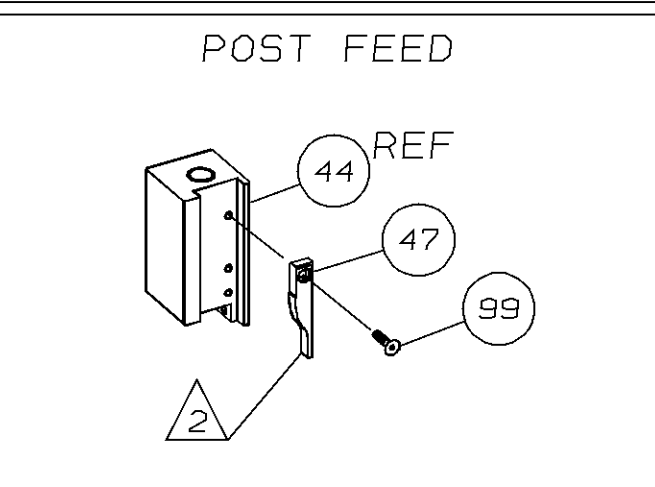


PART NUMBER	REV	FIRST USED
680005-1	A	854400-1
680005-2	B	565435-5

PRELIMINARY



* Trademark of AMP Incorporated



- 1 RECOMMENDED SPARE PARTS.
- 2 GREASE LIGHTLY.
- 3 GUARD MUST BE IN PLACE WHEN OPERATING APPLICATOR IN AMP-O-LECTRIC MACHINE.
- 4 LUBRICATE DAILY USING NO. 20 MACHINE OIL.
- 5 FEED OFF RECEPTACLE.
- 6 LUBRICATION REQUIRED WITH NICKEL PLATED TERMINALS.

TERMINAL NAME:
.180 DIA PLUG RECPT

42868	
42891	

CRIMPING DATA

PAD LTR	CRIMP HEIGHT	WIRE SIZE	
A	.085 ±.002	3.0 mm ²	
B	.081 ±.002	2.5 mm ²	
C	.076 ±.002	2.0 mm ²	
D	NOT USED		
CRIMP	SIZE	TYPE	RANGE
WIRE	.130	F	2.0-3.0 mm ²
INSUL	-	-	-
FEED:	APPL INST	SET UP GAGE	LAYOUT
.895	408-8039	458638-1	932
WIRE STRIP LENGTH -			

QTY	REV	U/M	DWG SIZE	PART NO	DESCRIPTION	ITEM NO
2	2	-	C	6-354778-9	PIN, WIRE DISC (.2840)C	129
2	2	-	C	5-354778-9	PIN, WIRE DISC (.2790)B	128
2	2	-	C	5-354778-1	PIN, WIRE DISC (.2750)A	126
1	1	-	A	986950-1	WASHER, FLAT PRECISION	125
2	2	-	A	21045-3	RING, RET "C" (Ø.187)FD PIN	124
						123
2	2	-	A	5-21028-1	PIN, STD SPRING (Ø.12)FD ADJ ROD	122
						121
1	1	-	A	1-21030-7	PIN, DOWEL (Ø.187x1.50)HSG	120
1	1	-	A	1-21030-1	PIN, DOWEL (Ø.187x.50)LEVER	119
						118
						117
1	1	-	A	21899-4	WASHER, FLAT (Ø5/16)SCR ADJ	116
						115
						114
6	6	-	A	21024-5	WASHER, LOCK (NO.10)SHEAR PL	113
						112
						111
7	7	-	A	21024-4	WASHER, LOCK (NO.8)SHEAR BL	110
						109
2	2	-	A	21018-4	NUT, HEX (4-40)DRAG	108
1	1	-	A	21018-5	NUT, HEX (6-32)FD ADJ PL	107
						106
2	2	-	A	21022-2	NUT, HEX SL (8-32)DRAG STUD	105
						104
						103
2	2	-	A	4-21078-8	SKT SKT SET (4-40x.75)DRAG	102
1	1	-	A	21009-2	SCR, SKT SET (1/4-20x.25)RAM	101
2	2	-	A	21017-2	SCR, DRIVE (#2x.19) ID PLATE	100
1	1	-	A	1-21002-7	SCR, BHC (6-32x.38) CAM	99
1	1	-	B	461264-1	PLATE, IDENTIFICATION	98
1	1	-	A	6-23715-5	SCR, PAN HD (6-32x1.50)FEED ADJ	97
						96
2	2	-	A	2-21002-2	SCR, BHC (8-32x.50) STRIPPER	95
4	4	-	A	2-21002-9	SCR, BHC (10-32x.75)HSG CAP	94
1	1	-	A	22733-8	SCR, BHC (8-32x.38 LW) ANVIL	93
4	4	-	A	3-21002-3	SCR, BHC (1/4-20x.50) ST ØD PL	92
3	3	-	A	2-22733-8	SCR, BHC (1/4-20x.62)BASE PL	91
						90
						89
						88
2	2	-	A	2-21000-8	SCR, SHC (8-32x.62) SLUG BLADE	87
3	3	-	A	2-21000-6	SCR, SHC (8-32x.38) STRIP GUIDE	86
2	2	-	A	2-21000-9	SCR, SHC (8-32x.75)R STRIP GUIDE	85
2	2	-	A	3-21000-7	SCR, SKT CAP (10-32x.75)FD GDE	84
						83
2	2	-	A	3-21000-6	SCR, SKT CAP (10-32x.62)FD ADJ P	82
1	1	-	A	3-21000-4	SCR, SKT CAP (10-32x.38) PIVOT BL	81
2	2	-	A	3-21000-8	SCR, SKT CAP (10-32x.88)SH PL	80
REF	-	-	A	455745-1	GUARD, WINDOW	79
						78
1	-	-	C	465184-9	LUBRICATOR ASSY	77
1	-	-	A	454406-1	SPACER, LUB BRACKET	76
						75
						74
						73
1	1	-	A	458109-1	WASHER, FLAT (SPECIAL)	72
1	1	-	A	690517-1	SPACER	71
						70
						69
						68
						67
						66
						65
						64
						63
						62
						61
						60
						59
						58
						57
						56
						55
						54
						53
						52
						51
						50
1	1	-	A	7-21002-9	BOLT, CRIMPER (5/16-24x1.00)	49
1	-	-	B	576179-4	CAM, PRE FEED	48
-	1	-	B	576179-3	CAM, POST FEED	47
						46
1	1	-	A	690191-1	PLUG, NYLON	45
1	1	-	C	455674-1	RAM	44
1	1	-	A	690125-1	WASHER, LAMINATED	43
1	1	-	A	690124-1	WASHER, RAM	42
1	1	-	A	690223-2	SPACER, INSULATION DISC	41
						40
						39
						38
1	1	-	D	354777-1	WIRE DISC, PLASTIC	37
1	1	-	A	22480-5	WASHER, SPRING	36
1	1	-	B	690212-1	POST, RAM	35
						34
						33
						32
						31
						30
						29
1	1	-	B	3-690451-2	SPACER, STRIPPER	28
1	1	-	A	240639-1	STRIPPER	27
1	1	-	C	455676-1	PLATE, BASE	26
2	2	-	A	22354-8	DRAG, STUD	25
1	1	-	B	455678-1	PLATE, STRIP GUIDE	24
1	1	-	C	240825-6	PLATE, STRIP HOLD DOWN	23
2	2	-	A	4-22281-1	SPRING, DRAG	22
						21
1	1	-	A	2-576118-4	DRAG, STOCK	20
						19
2	2	-	C	454204-4	GUIDE, STRIP (FRONT)	18
1	1	-	A	454178-1	GUIDE, FEED ROD	17
1	1	-	A	4-22284-9	SPRING, FEED RETURN	16
						15
1	1	-	D	5-455892-5	HOLD DOWN	14
1	1	-	B	690481-2	SPACER, HOLD DOWN	13
1	1	-	A	23846-1	SPRING, HOLD DOWN	12
1	1	-	B	240644-1	PLATE, REAR SHEAR	11
2	2	-	C	1-240645-7	SPACER, SHEAR PLATE	10
1	1	-	B	240642-1	PLATE, FRONT SHEAR	9
1	1	-	D	3-240654-4	ANVIL	8
1	1	-	B	6-240651-0	BLADE, SLUG	7
						6
						5
						4
						3
						2
1	1	-	C	456410-5	CRIMPER, WIRE	1

QTY	REV	U/M	DWG SIZE	PART NO	DESCRIPTION	ITEM NO
REVISION OF EACH ASSY NO (WHEN BLANK, USE DWG REVISION)						
PARTS LIST						

QTY	REV	U/M	DWG SIZE	PART NO	DESCRIPTION	ITEM NO
REVISION OF EACH ASSY NO (WHEN BLANK, USE DWG REVISION)						
PARTS LIST						

LOC	LEADMAKER	AMP-O-LECTRIC
A	T TERMINATING UNIT	K TERMINATING UNIT

DIMENSIONS IN INCHES. DO NOT SCALE PRINT. TOLERANCES UNLESS OTHERWISE SPECIFIED.

DR D. SALTZER 8/9/93 APP B.A. WOLFE 5-6-93
 CHK C. ERISMAN 5-5-93 REL M. ENTERLINE 5-13-93

REMOVE BURRS, BREAK SHARP EDGES R.015 MAX

SCALE: - DWG NO: 680005 SHEET 1 OF 1 REV B

THIS DRAWING IS A CONTROLLED DOCUMENT FOR AMP INCORPORATED. IT IS SUBJECT TO CHANGE AND THE CONTROLLING ENGINEERING ORGANIZATION SHOULD BE CONTACTED FOR THE LATEST REVISION.

THIS INFORMATION IS CONFIDENTIAL AND IS DISCLOSED TO YOU ON CONDITION THAT NO FURTHER DISCLOSURE IS MADE BY YOU TO OTHER THAN AMP PERSONNEL WITHOUT WRITTEN AUTHORIZATION FROM AMP INCORPORATED, HARRISBURG, PA.

680005