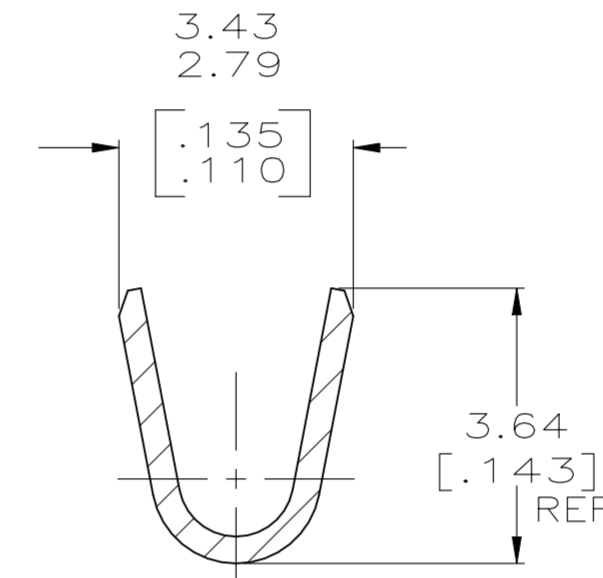
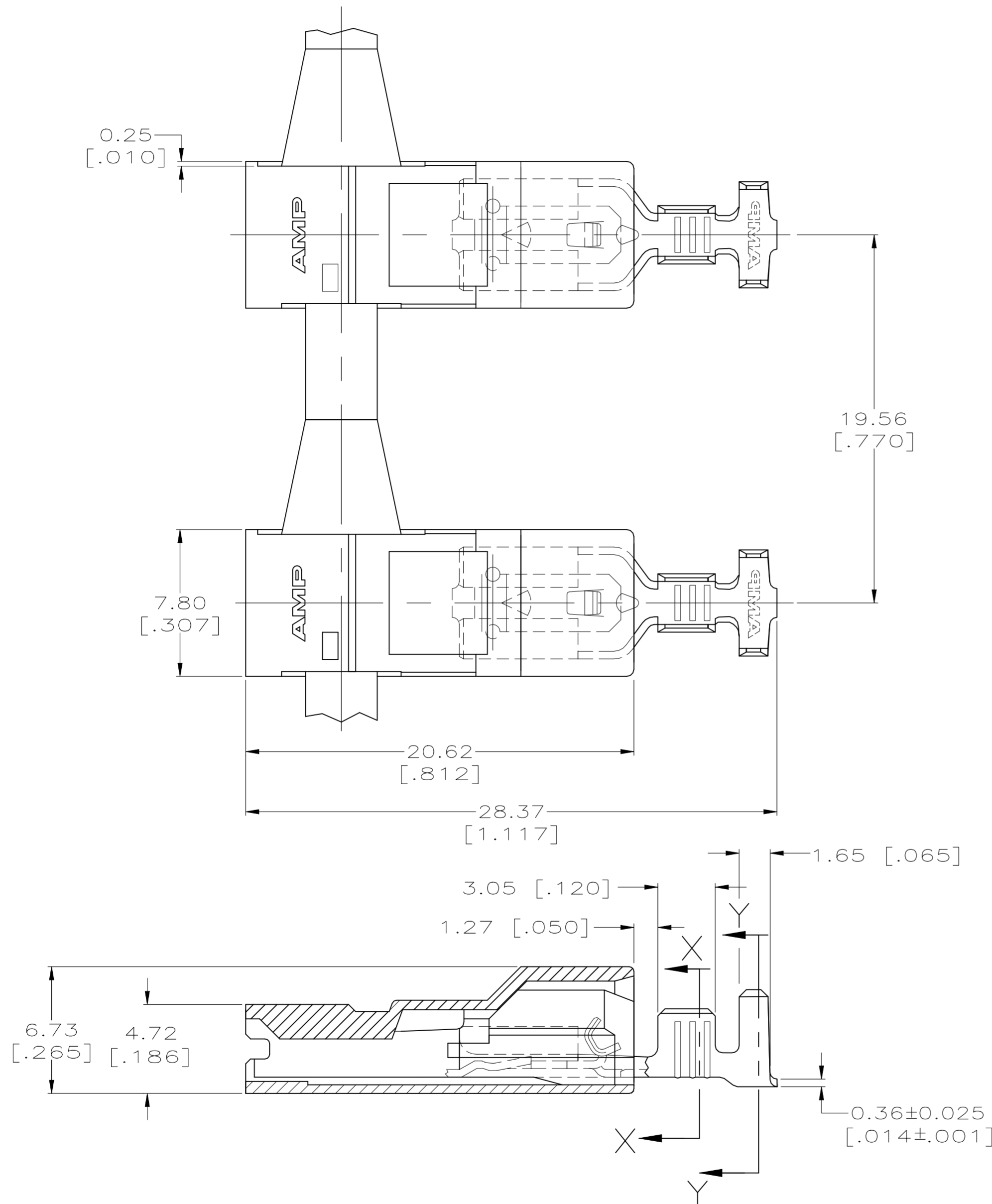
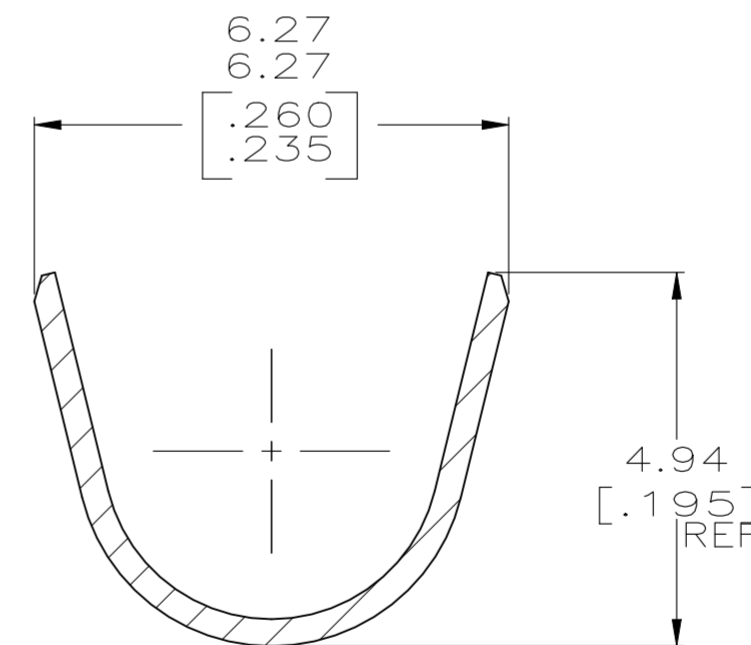


REVISIONS					
P	LTR	DESCRIPTION	DATE	DWN	APVD
F2		REVISED PER ECR-22-160893	14DEC2022	DB	BW

- 1 MATING TAB THK TO BE 0.51 ± 0.025 $[.020 \pm .001]$.
- 2 WIRE SIZE IS [#18-#14] AWG.
- 3 INSULATION RANGE IS 2.79-4.57 $[\.110-.180]$ DIA.
 2.79-3.56 $[\.110-.140]$ DIA - CRIMP WIDTH 4.57 $[\.180]$, F TYPE
 3.56-4.57 $[\.140-.180]$ DIA - CRIMP WIDTH 4.57 $[\.180]$, O TYPE



SECTION X-X
SCALE 10:1



SECTION Y-Y
SCALE 10:1

	6/6 VO NYLON, NATURAL	521212-2
SUPERSEDED BY 521212-2	4/6 V2 NYLON (150° C) BLACK	521212-1
	MATERIAL	PART NO.

THIS DRAWING IS A CONTROLLED DOCUMENT.		DWN	JR RUTH	01APR99		TE Connectivity		
DIMENSIONS:		CHK	MS FEHER	01APR99		NAME		
mm [INCHES]		APVD	J HUMMEL	01APR99		ASSEMBLY, RECEPT, POSI-LOCK, ULTRA-POD, 4.75 $[\.187]$ SERIES		
TOLERANCES UNLESS OTHERWISE SPECIFIED:		PRODUCT SPEC				SIZE	CAGE CODE	DRAWING NO
0 PLC	$\pm -$	APPLICATION SPEC			A2	00779	C=521212	-
1 PLC	$\pm -$				SCALE	5:1	SHEET	1 of 1
2 PLC	± 0.25 $[\.010]$				REV	F2		
3 PLC	$\pm -$							
4 PLC	$\pm -$							
ANGLES	$\pm -$							
MATERIAL	TERMINAL - BRASS	FINISH	TERMINAL - TIN	WEIGHT	0.000000			
HOUSING - SEE TABLE	HOUSING - SEE TABLE		HOUSING - SEE TABLE	CUSTOMER DRAWING				