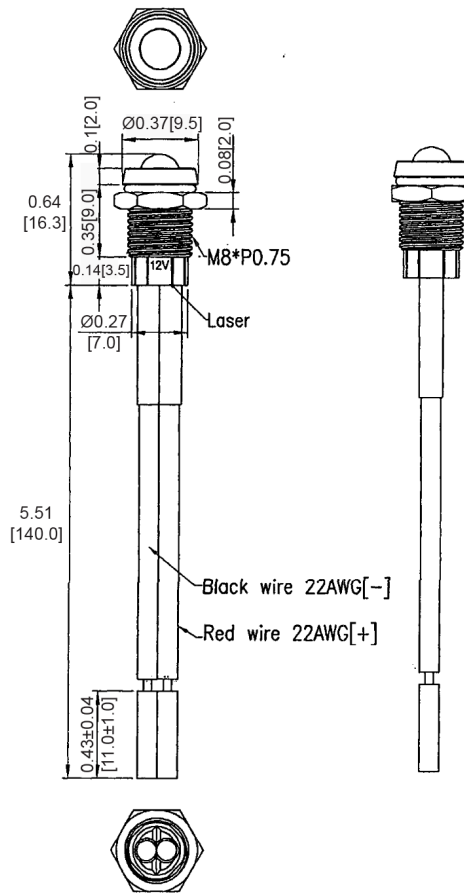


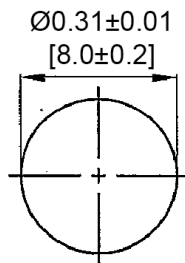
Mechanical Dimensions: Inches [mm]

Tolerances ± 0.012 [0.3] Unless Otherwise Specified



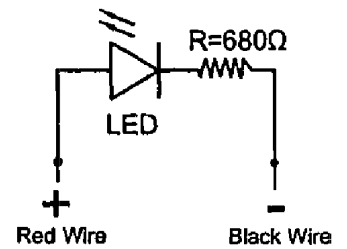
LED Color	Green
Lens Color	Colorless Clear
VF	3.2V
IF	20mA
Iv (mcd)	8000mcd
Viewing Angle	15°

Mounting Hole



Panel Thickness: 0.20 [5.0] max

Circuit Diagram



Electrical Specifications

Voltage Rating	12VDC
Insulation Resistance	DC 500V 1000M ohms
Dielectric Strength	AC 500V 1 min
Operating Temperature	-20°C ~ 80°C

Material Specifications

	IP67
LED Size	5mm
Body	Brass, Nickel Plated, Black
Base	Nylon 66, White
Terminal	Wire 22AWG UL1015, 125mm

Rev **Date of issue** **Revision Notes**

Designed **Approved**

A	11-30-2020	Initial Drawing	RC	OF
---	------------	-----------------	----	----