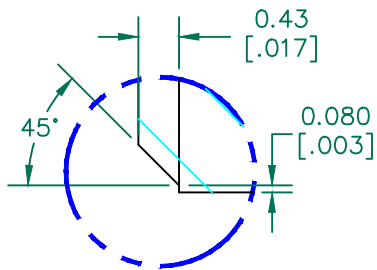


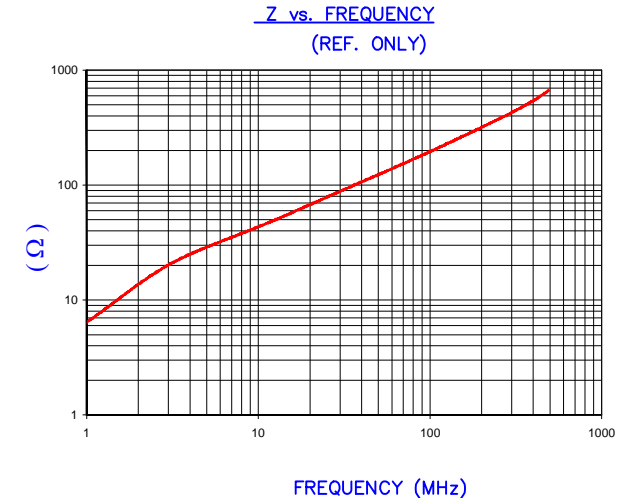
DETAIL A

SECTION A-A



DETAIL A
SCALE 6:1

IMPEDANCE (Z)			
Frequency	25 MHz	100 MHz	300 MHz
Nominal (REF)	78 Ω	192 Ω	418 Ω
Minimum	- Ω	173 Ω	- Ω



AGILENT E4991A Impedance/Material Analyzer
HP 16092A Test Fixture, REF # 2991

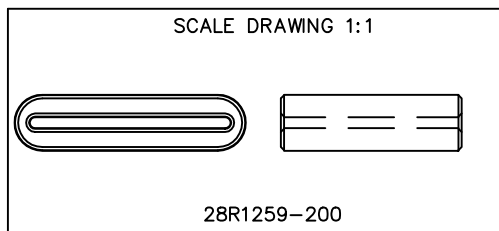
FERRITE CORE DIMENSIONS (SPEC): mm [Inches]

A	32.00 [1.260]	+	0.50 [.020]
B	27.80 [1.094]	+	0.50 [.020]
C	25.00 [.984]	+	1.00 [.039]
D	7.75 [.305]	+	0.50 [.020]
E	1.50 [.060]	+	0.50 [.020]

WEIGHT/1000 23.74 kgs [52.34 Lbs]

NOTES: UNLESS OTHERWISE SPECIFIED

1. COSMETIC SPECIFICATION REFER TO WI-QA-038.



DIMENSIONS ARE IN mm [INCHES].				This print is the property of Laird Tech. and is loaned in confidence subject to return upon request and with the understanding that no copies shall be made without the written consent of Laird Tech. All rights to design or invention are reserved.		Laird			
G	UPDATE LOGO	08/29/16	QIU	PROJECT/PART NUMBER: 28R1259-200		REV	G	PART TYPE: FERRITE RIBBON CORE	DRAWN BY: DTR
F	UPDATE MIN Z SPEC@100 Mhz, ADD REF #	02/03/04	JRK						
E	UPDATE FORMAT CURVE & Z SPECS	05/06/03	JRK						
D	UPDATE TO CNZ FORMAT ADD Z CURVE	07/29/02	JRK						
C	UPDATE PRINT, ADJUST IMPEDANCE VALUES COR. DETAIL "A", CORRECT PART WEIGHT	02/26/02	JRK						
B	CHG Z SPECS & FIRED WEIGHT	06/02/99	BAC	DATE:	03/17/98	SCALE:	3 : 1	SHEET:	
A	ORIGINAL DRAFT	03/17/98	DTR	CAD #	28R1259-200-G	TOOL #	R1259	FERRITE	
REV	DESCRIPTION	DATE	INT						