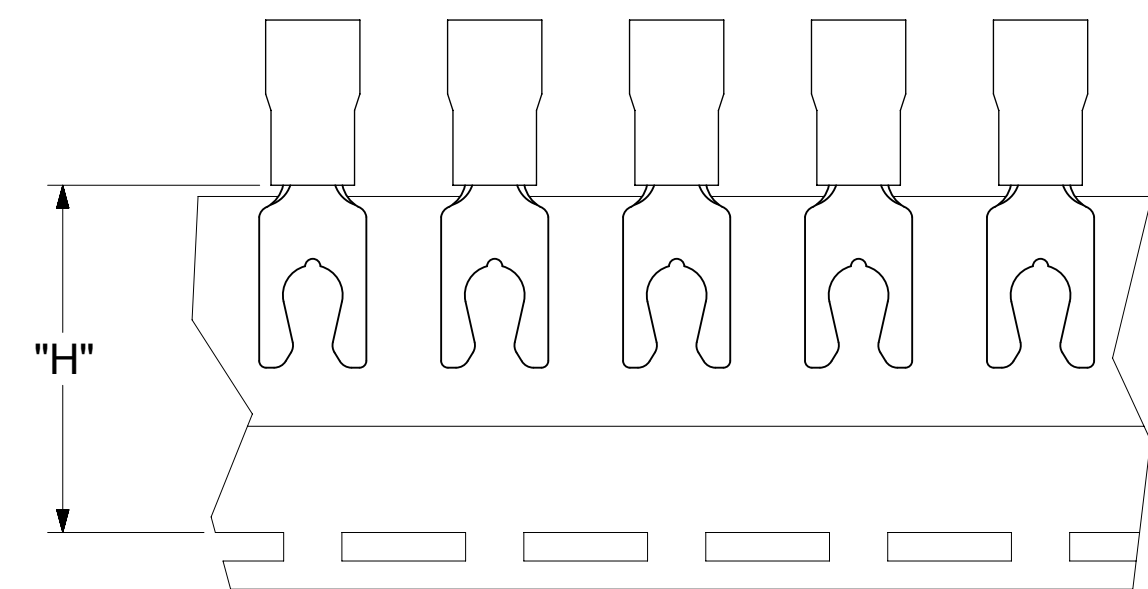
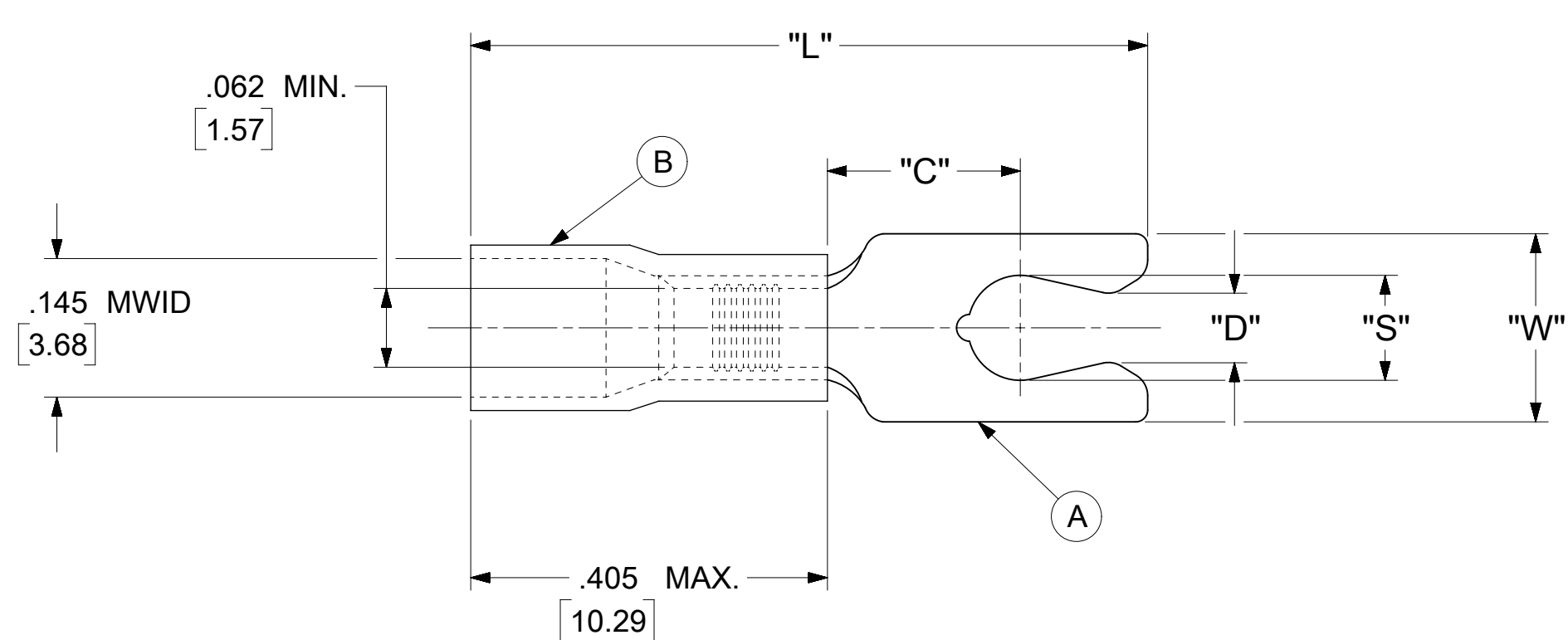


LOOSE PIECE		TAPE MOUNTED		SPECIFICATIONS						
MATERIAL NUMBER	ENGINEERING NUMBER	MATERIAL NUMBER	ENGINEERING NUMBER	STUD SIZE	"S" ±.005 [0.13]	"W" ±.010 [0.25]	"C" MIN.	"L" MAX.	"D" ±.005 [0.13]	"H"
190990013	AA-2714-08X	190990014	AA-2714-08XT	8	.173 [4.39]	.310 [7.87]	.261 [6.63]	.871 [22.12]	.139 [3.53]	.980 [24.89]
190990015	AA-2715-10X	190990016	AA-2715-10XT	10	.198 [5.03]	.330 [8.38]	.261 [6.63]	.919 [23.34]	.156 [3.96]	.980 [24.89]



PARTS ON TAPE

NOTES:

1. MATERIAL:

(A). TERMINAL: COPPER (STOCK THICKNESS $.028 \begin{smallmatrix} +.001 \\ -.000 \end{smallmatrix}$ [0.71])

PLATING: ELECTRO-TIN (.0003 MIN.)

(B). INSULATION: MOLDED PVC (RED)

2. MWID: MAXIMUM WIRE INSULATION DIAMETER

3. WIRE SIZE: 22 -18 AWG

0.25 -1.5 MM²

4. "UL" LISTING #E32244

"CSA" LISTING #18689

5. ALL DIMENSIONS IN INCHES/[MM].

6. PARTS ARE ROHS COMPLIANT.

7. DIMS. SHOWN ARE FOR REFERENCE ONLY.

SYMBOLS	THIS DRAWING CONTAINS INFORMATION THAT IS PROPRIETARY TO MOLEX ELECTRONIC TECHNOLOGIES, LLC AND SHOULD NOT BE USED WITHOUT WRITTEN PERMISSION										
	DIMENSION UNITS	SCALE		CURRENT REV DESC: MIGRATION TO ECTR/NX							
∇ = 0	INCH/MM	NTS		EC NO: 620958							
∇ = 0	GENERAL TOLERANCES (UNLESS SPECIFIED)			DRWN: ABENJAMINLW 2019/07/16						SNAP SPADE TONGUE TERMINAL INSULKRIMP SERIES	
∇ = 0		MM	INCH	CHK'D: GROJAS01 2019/07/19							
S = 0	4 PLACES	±	---	±	---	APPR: JMACNEIL 2019/08/05					
∇ = 0	3 PLACES	±	---	±	.005	INITIAL REVISION:					
∇ = 0	2 PLACES	±	0.13	±	.01	DRWN: GZ 1985/04/05					
∇ = 0	1 PLACE	±	0.25	±	---	APPR: JMACNEIL 2019/08/05					
∇ = 0	0 PLACES	±	---	±	---	DRAFT WHERE APPLICABLE MUST REMAIN WITHIN DIMENSIONS					
∇ = 0	ANGULAR TOL	±	0.5 °	THIRD ANGLE PROJECTION		DRAWING	SERIES	MATERIAL NUMBER	CUSTOMER	SHEET NUMBER	
∇ = 0						C-SIZE	19099	SEE TABLE	GENERAL MARKET	1 OF 1	

DOCUMENT NUMBER				DOC TYPE	DOC PART	REVISION
190990013				PSD	000	A
MATERIAL NUMBER				CUSTOMER		SHEET NUMBER
SEE TABLE				GENERAL MARKET		1 OF 1