



FEATURES

- Efficiency up to 92.8%
- Wide input range, 9V-36V
- Package with Industry Standard Pinout
- Package Dimension:
 - Without heat sink
50.8 x25.4 x10.2mm (2.0" x1.0" x0.40")
 - With heat sink
50.8 x25.4 x17.1mm (2.0" x1.0" x0.67")
- Over voltage protection, hiccup mode
- Over current protection, hiccup mode
- Positive or Negative Remote ON/OFF
- Without tantalum capacitor inside module
- Operating Temperature range - 40°C to +85°C
- Input to Output Isolation: 1500VDC
- RoHS Compliant
- 2 Years Product Warranty
- Heat-sink is option
- EN 50155 Certified
- UL 60950-1 & CSA C22.2 No.60950-1-07



The S24SP family, the power (40W) industrial input range 2"X1" isolated power converter whose pinout follows industry standard. The S24SP series comes with a host of industry-standard features, such as over current protection, over voltage protection, over temperature protection and remote on/off. An optional heatsink is available for more extreme thermal requirements. All models have an ultra-wide 4:1 input voltage range (9V to 36V). With operating temperature of -40°C to +85°C, it is suitable for customers' critical applications, such as process control and automation, transportation, data communication and telecom equipment, test equipment, medical device and everywhere where space on the PCB is critical.

Model List

| Model Number | Input Voltage (Range) | Output Voltage | Output Current | | Input Current (typ input voltage) | | Load Regulation | Maxcapacitive Load (Cap ESR>=10mohm;Full load;5%overshoot of Vout at startup) | Efficiency (typ.) |
|--------------|-----------------------|----------------|----------------|------|-----------------------------------|----------|-----------------|---|-------------------|
| | | | Max. | Min. | @Max. Load | @No Load | | | |
| | VDC | VDC | mA | mA | mA(typ.) | mA(typ.) | mV(max) | uF | % |
| S24SP05008 | 24 (9 ~ 36) | 5V | 8000 | 0 | 1795 | 70 | ±25 | 20000 | 92.8% |
| S24SP12004 | | 12V | 3500 | 0 | 1885 | 60 | ±60 | 6000 | 92.8% |
| S24SP15003 | | 15V | 2700 | 0 | 1800 | 60 | ±75 | 4000 | 93.7% |
| S24SP24002 | | 24V | 1700 | 0 | 1835 | 40 | ±120 | 2000 | 92.5% |

Input Characteristics

| Item | Model | Min. | Typ. | Max. | Unit |
|--|------------------------------|--------------------|------|------|------|
| Input Surge Voltage (100 msec) | All Models | --- | --- | 50 | VDC |
| Input Turn-On Voltage Threshold | All Models | 8 | 8.5 | 9 | VDC |
| Input Turn-Off Voltage Threshold | All Models | 7 | 7.5 | 8 | VDC |
| Input Under-Voltage Lockout Hysteresis | All Models | 0.4 | 1 | 1.7 | VDC |
| Off-Converter Input Current | All Models, Vin=24V | --- | 10 | --- | mA |
| Input reflected ripple current | All Models, with 12uH, 20MHz | --- | 15 | 30 | mA |
| Reverse Polarity Input Current | All Models | --- | --- | 0.5 | A |
| ON/OFF Control, Logic High | All Models | 2.4 | --- | 10 | VDC |
| ON/OFF Control, Logic Low | All Models | -0.7 | --- | 0.8 | VDC |
| Input Filter | All Models | Internal LC Filter | | | |

Output Characteristics

| Item | Conditions | Min. | Typ. | Max. | Unit |
|--------------------------------|--|------|------|------|-------------------|
| Output Voltage Accuracy | | --- | --- | ±1 | %Vo |
| Line Regulation | Vin=9V to 36V | --- | --- | ±0.2 | %Vo |
| Total Output Voltage Range | Over Load, Line and Temperature | --- | --- | ±3 | %Vo |
| Ripple & Noise (Note 2) | Vin=24V, Full Load | --- | 70 | --- | mV _{p-p} |
| Dynamic load response | 5V module 50%-75% full load, 0.1A/uS | --- | 4 | --- | %Vo |
| | 12V,15V,24V module 50%-75% full load, 0.1A/uS | --- | 2 | --- | |
| Output Over Current Protection | Output Voltage 10% Low, Hiccup | 110 | --- | 230 | %Io,max |
| Short Output Protection | Long Term, Auto-recovery | | | | |
| Output Over-Voltage Protection | Hiccup, Auto-recovery | 115 | --- | 140 | %Vo |
| Output Trim Range | Pout ≤ max rated power, Io ≤ Io,max | -10 | --- | +10 | %Vo |

General Characteristics

| Item | Conditions | Min. | Typ. | Max. | Unit |
|-------------------------------|------------|------|------|------|------|
| I/O Isolation Voltage (rated) | | --- | --- | 1500 | VDC |
| I/O Isolation Resistance | | 10 | --- | --- | MΩ |
| I/O Isolation Capacitance | | --- | 2200 | --- | pF |
| Switching Frequency | | --- | 330 | --- | KHz |

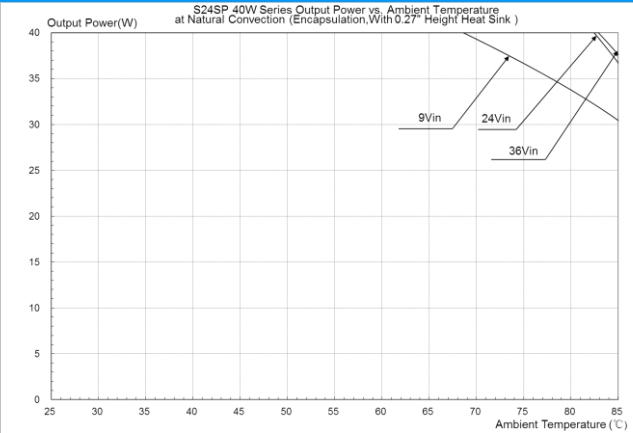
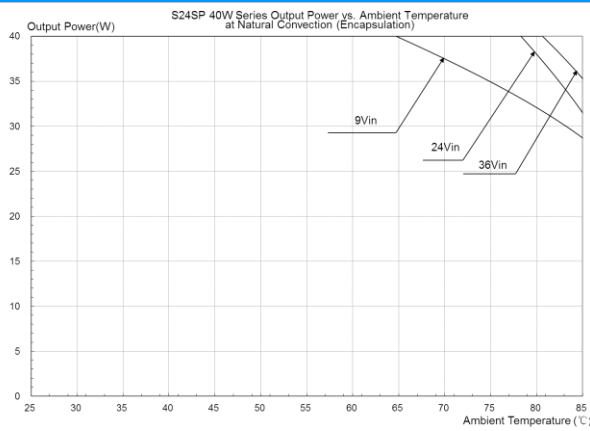
Environmental Specifications

| Parameter | Conditions | Min. | Max. | Unit |
|---|------------|--------------------|------------|----------|
| Operating Temperature Range (with Derating) | Ambient | -40 | +85 | °C |
| Case Temperature(9Vin/24Vin/36Vin) | | --- | 95/105/105 | °C |
| Storage Temperature Range | | -50 | +125 | °C |
| Humidity (non condensing) | | --- | 95 | % rel. H |
| NTC Shutdown Temperature | | 125 | | °C |
| Cooling | | Natural Convection | | |

EMC Specifications

| Parameter | Standards & Level | Performance |
|-------------------------|---------------------------------------|--|
| EMI | EN55022 | Class A (EMI filter circuit see page 9, layout and EMI considerations) |
| ESD | EN61000-4-2 air ± 8KV , Contact ± 6KV | Perf. Criteria A |
| Radiated immunity | EN61000-4-3 20V/m | Perf. Criteria A |
| Fast transient (Note 4) | EN61000-4-4 ±2KV | Perf. Criteria A |
| Surge (Note 4) | EN61000-4-5 ±1KV | Perf. Criteria A |
| Conducted immunity | EN61000-4-6 10V/m | Perf. Criteria A |

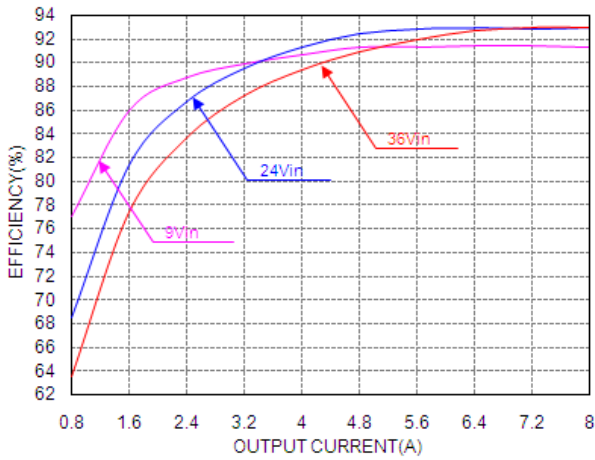
Thermal Derating Curves (No Heat Sink and With Heat Sink)



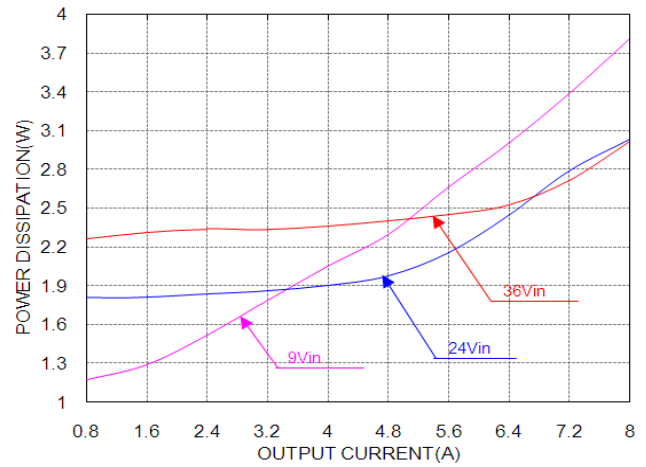
Notes

- 1 Specifications typical at $T_a = +25^\circ\text{C}$, resistive load, nominal input voltage and rated output current unless otherwise noted.
- 2 Ripple & Noise measurement bandwidth is 0-20MHz, with $10\mu\text{F}$, tantalum capacitor and $1\mu\text{F}$ ceramic capacitor.
- 3 DC/DC converters should be externally fused at the front end for protection.
- 4 The external circuit is the same with EMI filter circuit. (EMI filter circuit as page 9 showing)

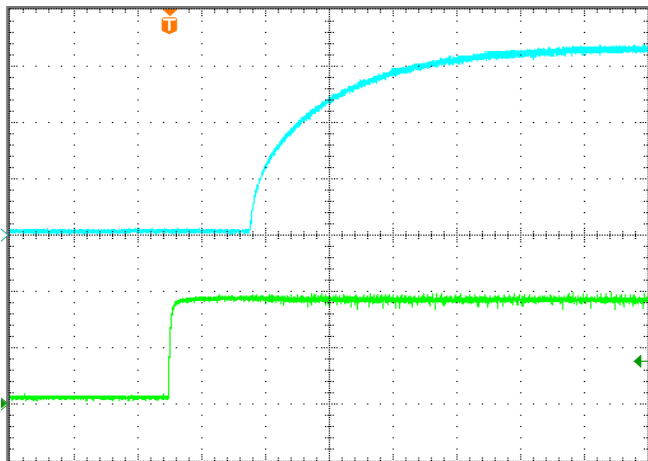
ELECTRICAL CHARACTERISTICS CURVES - S24SP05008, 9-36VIN, 5V/8A



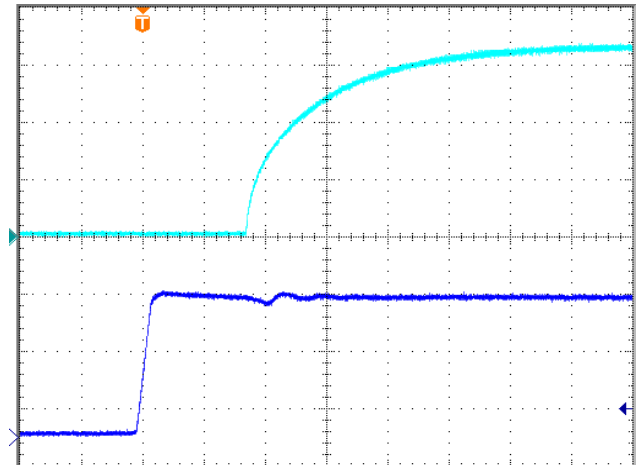
Efficiency vs. load current for various input voltage at 25°C.



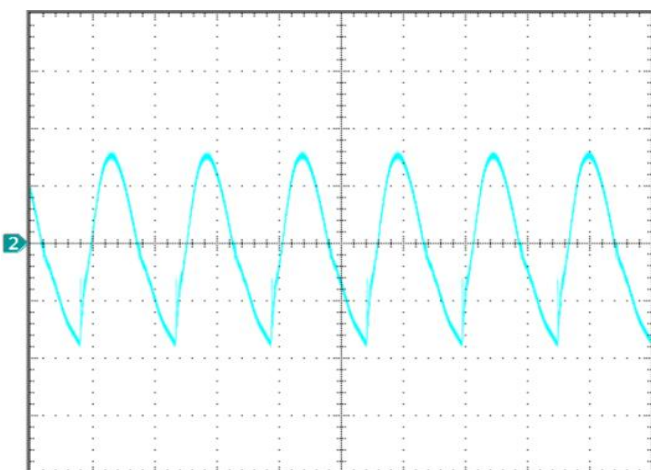
Power dissipation vs. load current at 25°C.



Turn-on transient at full load current (10ms/div).
Top Trace: Vout; 1.5V/div; Bottom Trace: ON/OFF input: 2V/div.

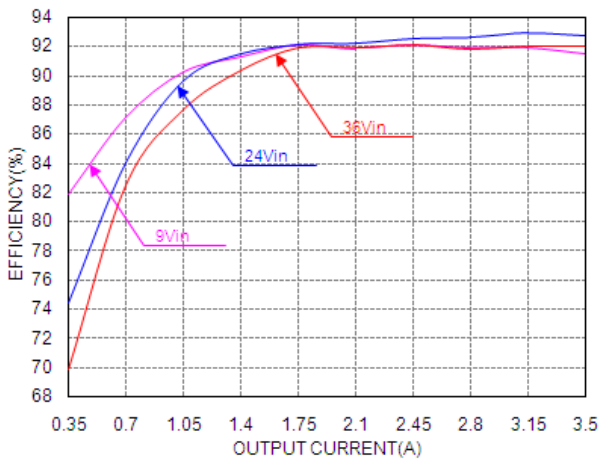


Turn-on transient at full load current (10ms/div).
Top Trace: Vout; 1.5V/div; Bottom Trace: input voltage: 10V/div.

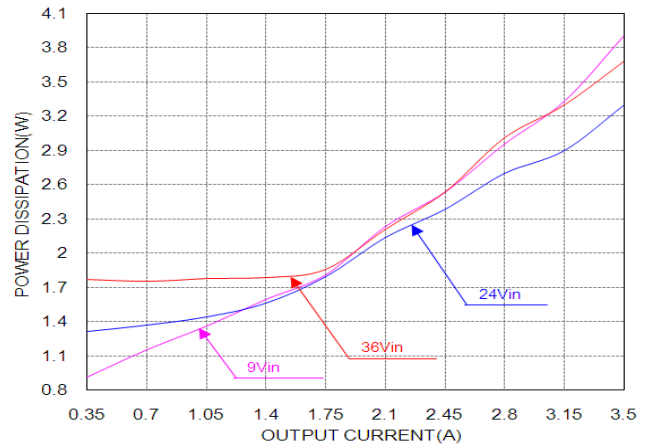


Output voltage ripple at nominal input voltage and max load current (20mV/div, 2us/div)
Load cap: 10μF, tantalum capacitor and 1μF ceramic capacitor.
Bandwidth: 20MHz.

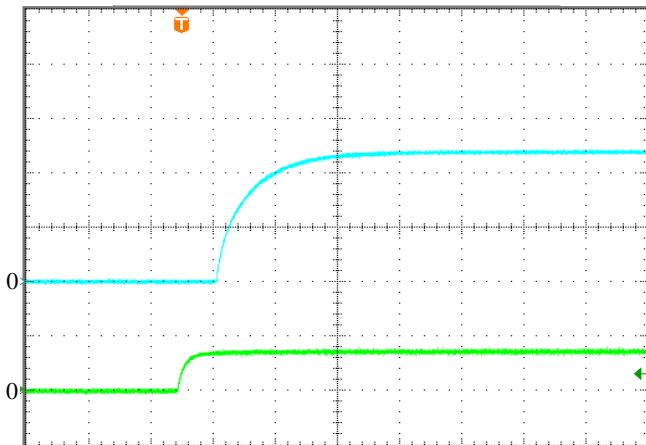
ELECTRICAL CHARACTERISTICS CURVES - S24SP12004, 9-36VIN, 12V/3.5A



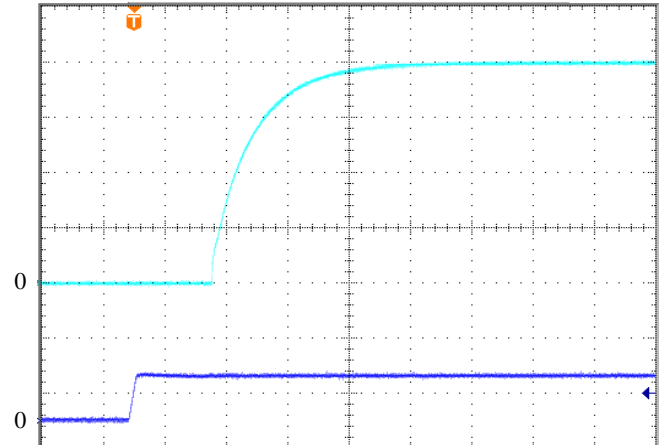
Efficiency vs. load current for various input voltage at 25°C.



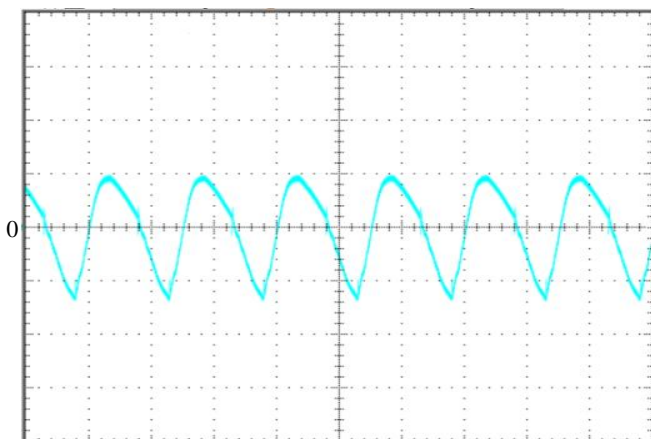
Power dissipation vs. load current at 25°C.



Turn-on transient at full load current (20ms/div).
Top Trace: Vout; 5V/div; Bottom Trace: ON/OFF input: 5V/div.

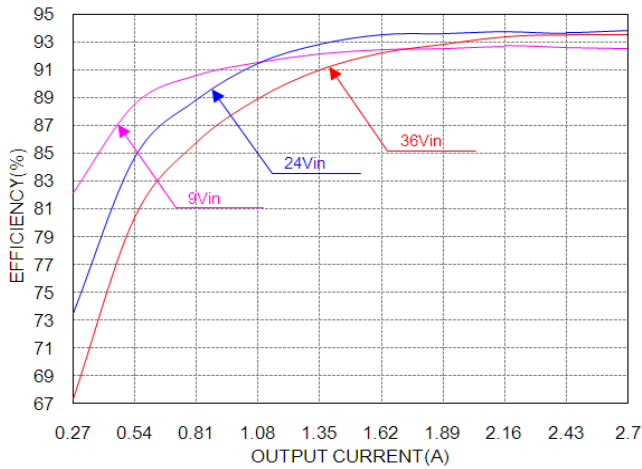


Turn-on transient at full load current (20ms/div).
Top Trace: Vout; 3V/div; Bottom Trace: input voltage: 30V/div.

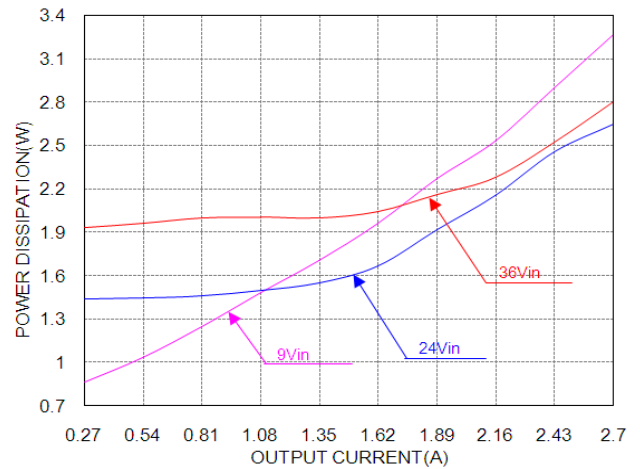


Output voltage ripple at nominal input voltage and max load current (20mV/div, 2us/div)
Load cap: 10μF, tantalum capacitor and 1μF ceramic capacitor.
Bandwidth: 20MHz.

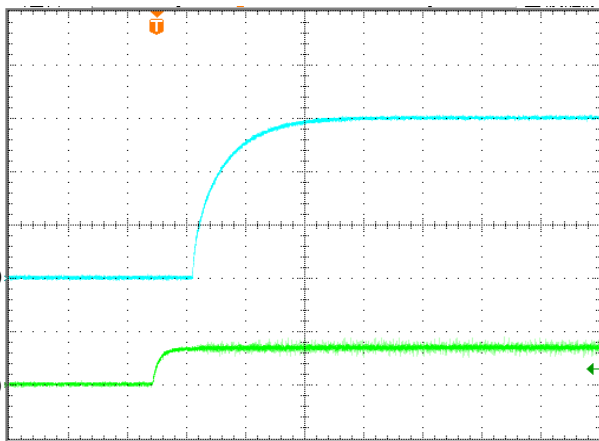
ELECTRICAL CHARACTERISTICS CURVES - S24SP15003, 9-36VIN, 15V/2.7A



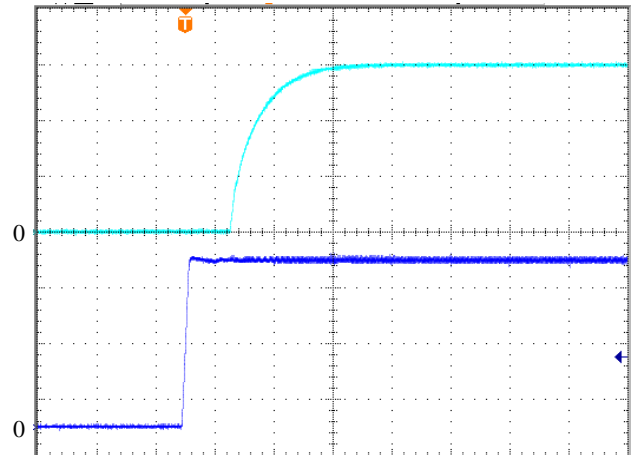
Efficiency vs. load current for various input voltage at 25°C.



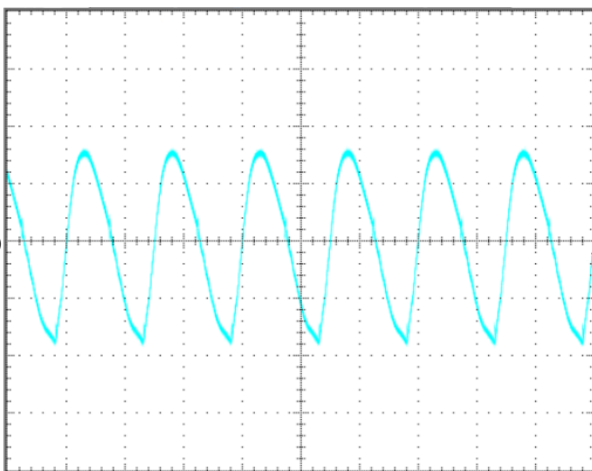
Power dissipation vs. load current at 25°C.



Turn-on transient at full load current (20ms/div).
Top Trace: Vout; 5V/div; Bottom Trace: ON/OFF input: 5V/div.

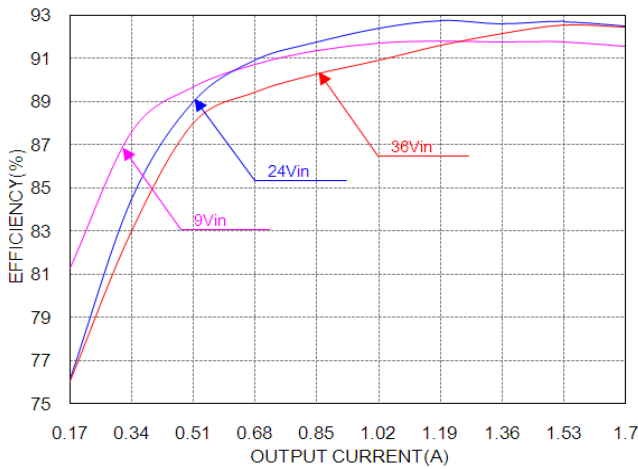


Turn-on transient at full load current (20ms/div).
Top Trace: Vout; 5V/div; Bottom Trace: input voltage: 8V/div.

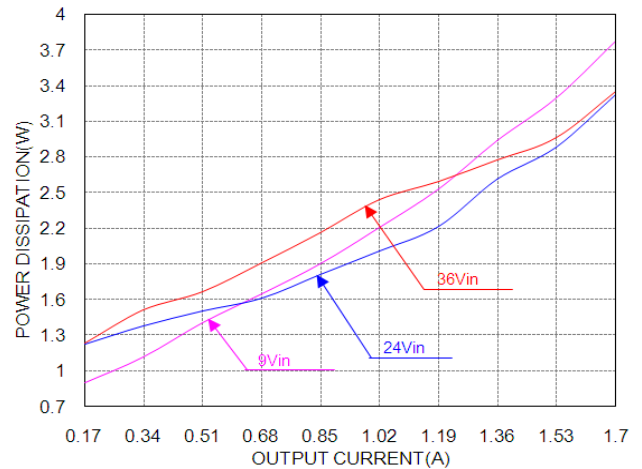


Output voltage ripple at nominal input voltage and max load current (20mV/div, 2us/div)
Load cap: 10μF, tantalum capacitor and 1μF ceramic capacitor.
Bandwidth: 20MHz.

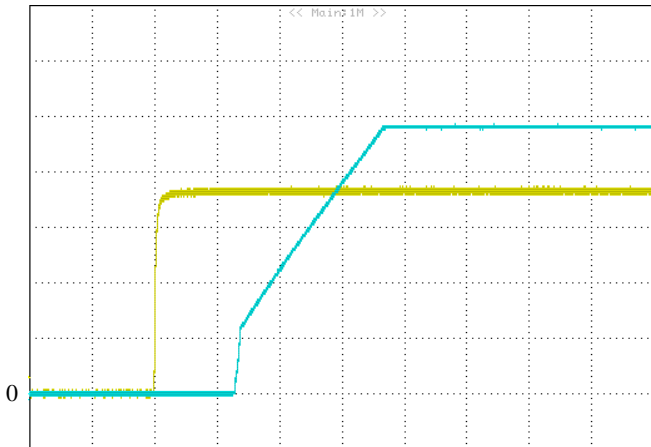
ELECTRICAL CHARACTERISTICS CURVES - S24SP24002, 9-36VIN, 24V/1.7A



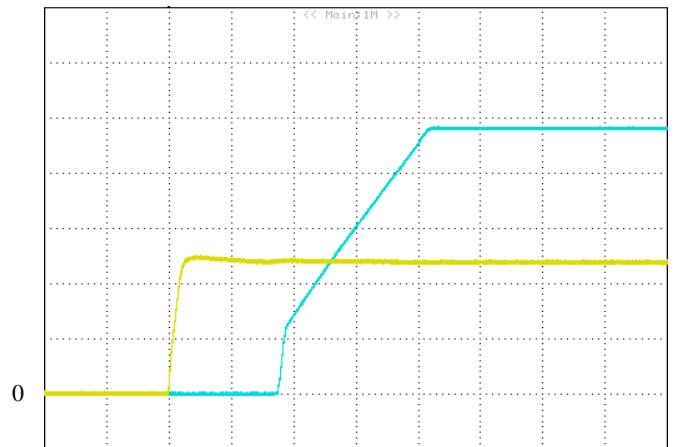
Efficiency vs. load current for various input voltage at 25°C.



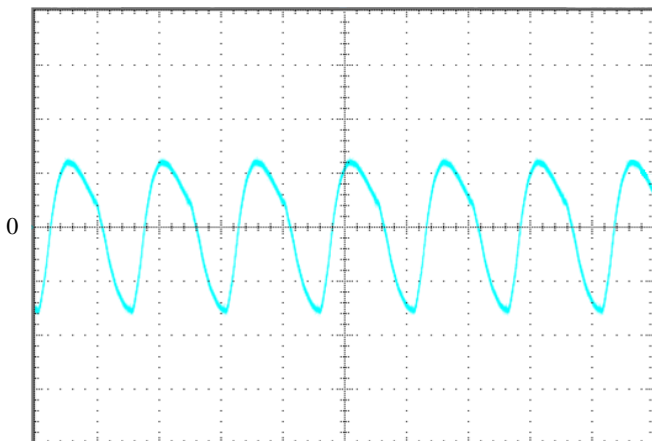
Power dissipation vs. load current at 25°C.



Turn-on transient at full load current (10ms/div).
Top Trace: Vout; 5V/div; Bottom Trace: ON/OFF input: 1V/div.



Turn-on transient at full load current (10ms/div).
Top Trace: Vout; 5V/div; Bottom Trace: input voltage: 10V/div.



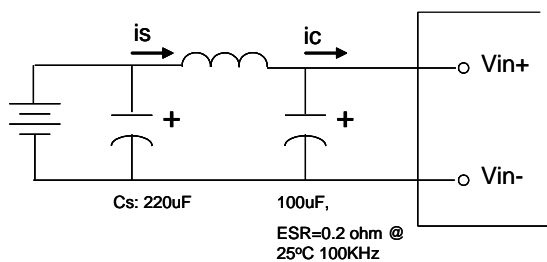
Output voltage ripple at nominal input voltage and max load current
(20mV/div, 2us/div)
Load cap: 10μF, tantalum capacitor and 1μF ceramic capacitor.
Bandwidth: 20MHz.

DESIGN CONSIDERATIONS

Input Source Impedance

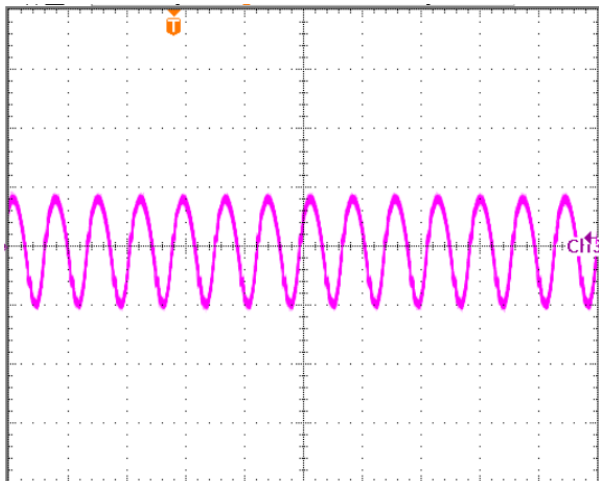
The impedance of the input source connecting to the DC/DC power modules will interact with the modules and affect the stability. A low ac-impedance input source is recommended. If the source inductance is more than a few μH , we advise a $100\mu\text{F}$ electrolytic capacitor mounted close to the input of the module to improve the stability.

Input Reflected Ripple Current

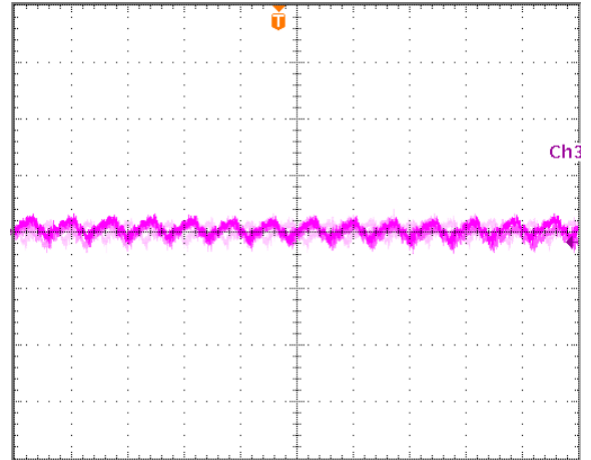


Test set-up diagram showing measurement points for Input Terminal Ripple Current and Input Reflected Ripple Current.

Measured input reflected-ripple current with a simulated source Inductance (LTEST) of $12\mu\text{H}$. Capacitor Cs offset possible battery impedance.

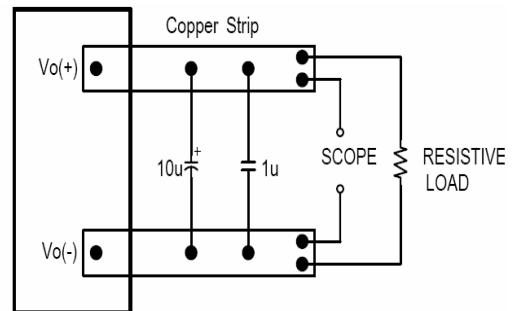


Input Terminal Ripple Current, i_c , at full rated output current and nominal input voltage with $12\mu\text{H}$ source impedance and $100\mu\text{F}$ electrolytic capacitor (250 mA/div, 4us/div).



Input reflected ripple current, i_s , through a $12\mu\text{H}$ source inductor at nominal input voltage and rated load current (25 mA/div, 4us/div)

Output Ripple Noise



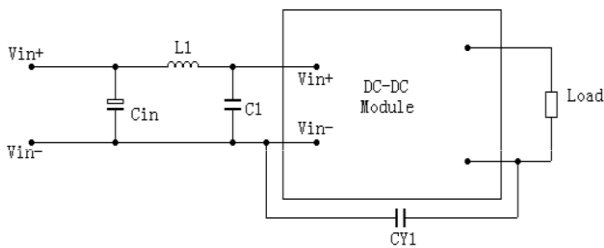
Output voltage ripple test setup.

Load capacitance: $1\mu\text{F}$ ceramic capacitor and $10\mu\text{F}$ tantalum capacitor. Bandwidth: 20 MHz. Scope measurements should be made using a BNC cable (length shorter than 20 inches). Position the load between 51 mm to 76 mm (2 inches to 3 inches) from the module.

DESIGN CONSIDERATIONS

Layout and EMI considerations

Delta's DC/DC power modules are designed to operate in a wide variety of systems and applications. For design assistance with EMC compliance and related PWB layout issues, please contact Delta's technical support team. An external input filter module is available for easier EMC compliance design. Below is the reference design for an input filter to pass EN55022 (VDE0878) class A (both q. peak and average).



EMI filter circuit

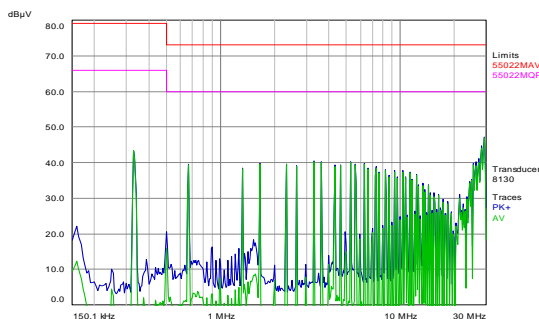
Cin=100uF/50V;Nippon chemi-con,ESR 85 mohm

L1=4.7uH;PCMC063T-4R7MN

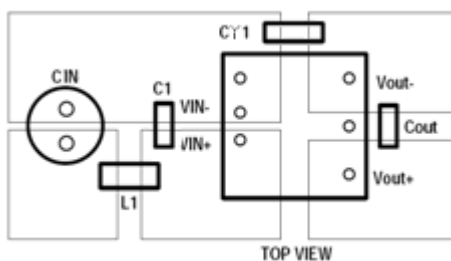
C1=6.8uF/50V/1812/MLCC

CY1=6.8nF/2KV/1210/MLCC

Test Result:



At T = +25°C, Typical input voltage and full load.



Recommended PCB Layout

It is suggested to use multiple layers PCB and large size copper on system board which connects to pins of module, that can achieve better thermal performance.

FEATURES DESCRIPTIONS

Over-Current Protection

The modules include an internal output over-current protection circuit, which will endure current limiting for an unlimited duration during output overload. If the output current exceeds the OCP set point, the modules will shut down (hiccup mode).

The modules will try to restart after shutdown. If the overload condition still exists, the module will shut down again. This restart trial will continue until the overload condition is corrected.

Over-Voltage Protection

The modules include an internal output over-voltage protection circuit, which monitors the voltage on the output terminals. If this voltage exceeds the over-voltage set point, the modules will shut down, and then restart after a hiccup-time (hiccup mode).

If latch mode is needed, please contact with Delta.

Over-Temperature Protection

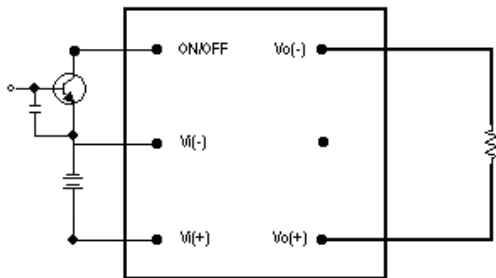
The over-temperature protection consists of circuitry that provides protection from thermal damage. If the temperature exceeds the over-temperature threshold the module will shut down. The module will restart after the temperature is within specification.

Remote On/Off

The remote on/off feature on the module can be either negative or positive logic depend on the part number options on the last page.

- ❖ For Negative logic version, turns the module on during an external logic low and off during a logic high. If the remote on/off feature is not used, please short the on/off pin to Vi (-).
- ❖ For Positive logic version, turns the modules on during an external logic high and off during a logic low. If the remote on/off feature is not used, please leave the on/off pin to floating.

Remote on/off can be controlled by an external switch between the on/off terminal and the Vi (-) terminal. The switch can be an open collector or open drain.



Remote on/off implementation

Output Voltage Adjustment (TRIM)

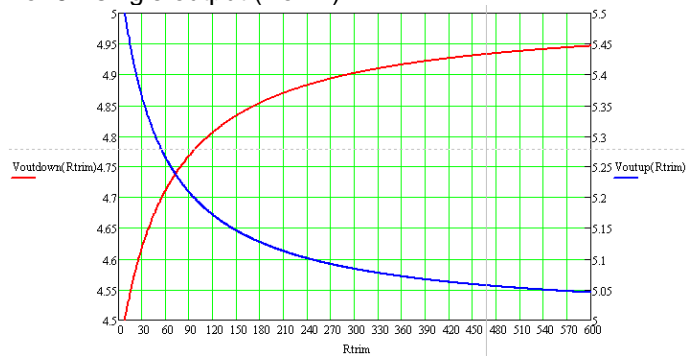
Only single output modules have output adjust function.

To increase the output voltage set point, connect an external resistor between the TRIM pin and the Vout(-).

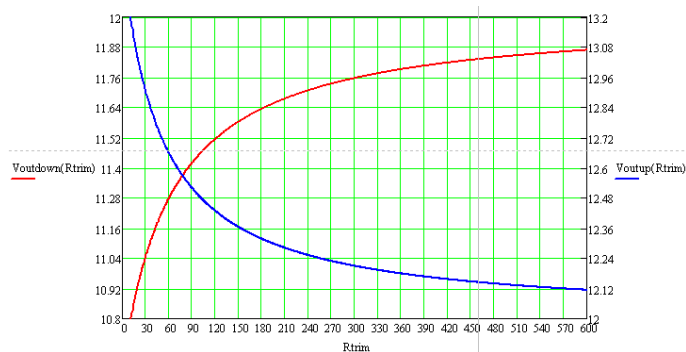
To decrease the output voltage set point, connect an external resistor between the TRIM pin and the Vout(+).

The maximum adjust range is $\pm 10\%$, the TRIM pin should be left open if this feature is not used.

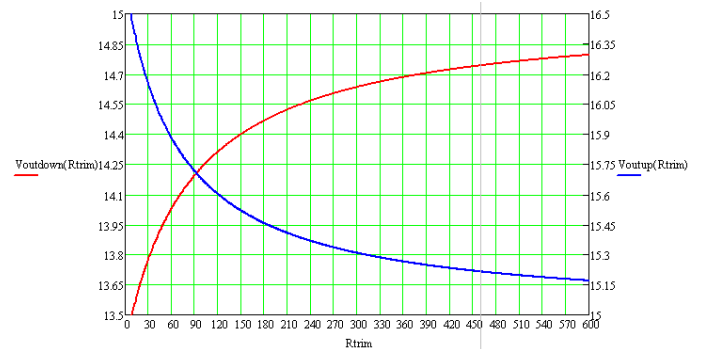
For 5V single output (Kohm):



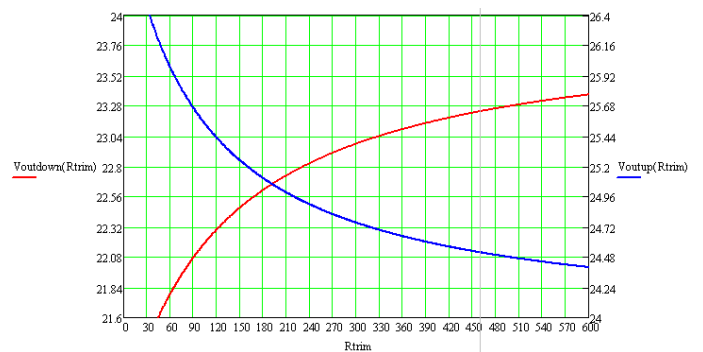
For 12V single output (Kohm):



For 15V single output (Kohm):



For 24V single output (Kohm):



For example:

When need trim up to 5.2V, then the external resistor should be 95.2Kohm between trim pin and Vout- pin.

When need trim down to 4.9V, then the external resistor should be 291.2Kohm between trim pin and Vout+ pin.

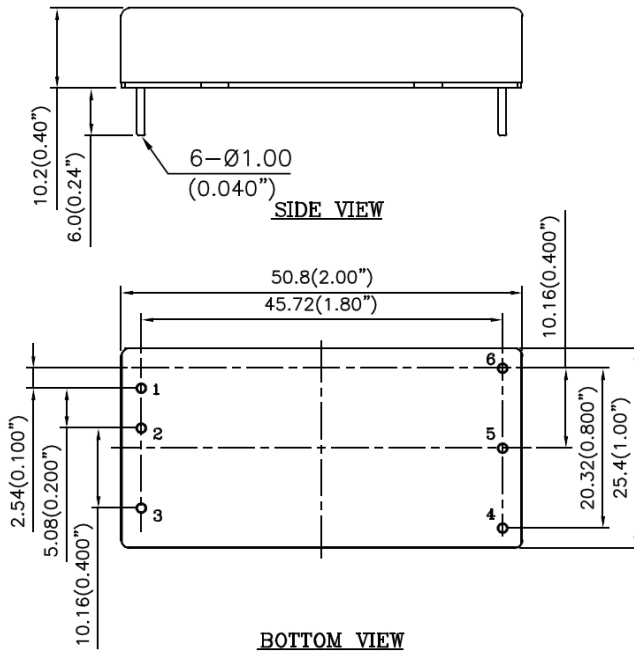
THERMAL CONSIDERATIONS

Thermal de-rating curve is a standard for customer to make thermal evaluation and make sure the module's components are operated under allowed temperature. The module's cooling condition is natural convection. In thermal de-rating curve, if we know the module's input voltage and output power we can find the allowed maximum ambient temperature.

The module's case temperature is a reference to make thermal evaluation. If the case temperature exceed the allowed maximum value, the module may probably have thermal issue.

Mechanical Drawing (without heat sink)

Mechanical Dimensions



Pin Connections

| Pin | Function |
|-----|----------|
| 1 | Vin+ |
| 2 | Vin- |
| 3 | On/off |
| 4 | Trim |
| 5 | Vout- |
| 6 | Vout+ |

Physical outline

Case Size: 50.8*25.4*10.2(2.0"*1.0"*0.4")

Case material: Al alloy, anodize black

Baseplate material: Non-conductive FR-4

Pin material: Brass; finish: Matte Tin plating and Nickel under plating

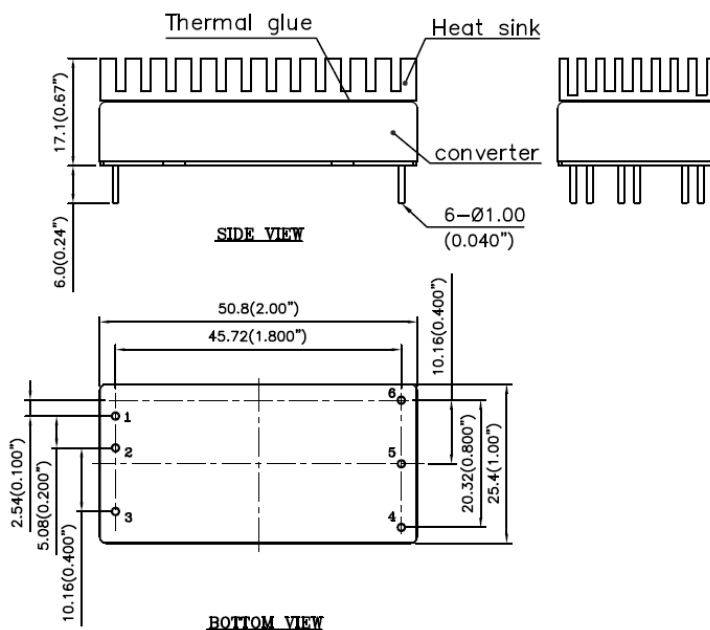
Pin length: refer part numbering system

Weight: 34grams

- All dimensions in mm (inches)
- Tolerance: X.X±0.5 (X.XX±0.02)
X.XX±0.25 (X.XXX±0.010)
- Pins Diameter : ±0.10(±0.004)

Mechanical Drawing (with heat sink)

Mechanical Dimensions



Physical Outline

| | |
|---|-----------------------|
| 1 | Heat sink |
| | Material: Al-6063 |
| | Finish: anodize black |
| | Weight: 10.3grams |
| 2 | Model weight: 46grams |

- All dimensions in mm (inches)
- Tolerance: X.X±0.5 (X.XX±0.02)
X.XX±0.25 (X.XXX±0.010)

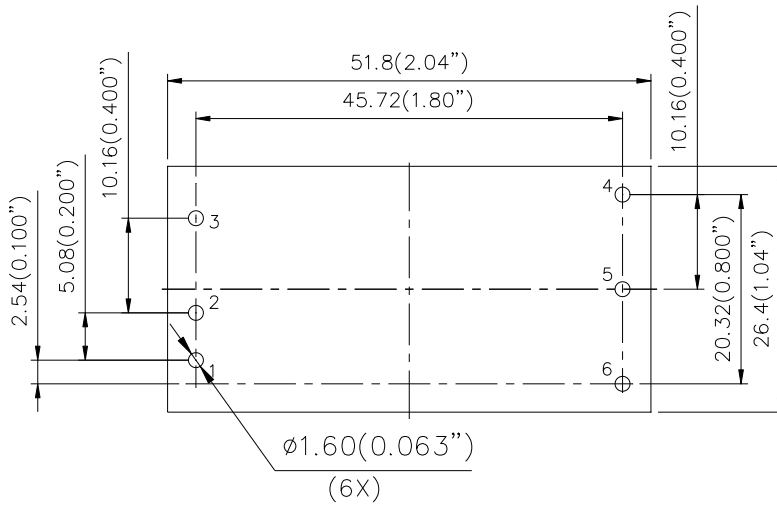
Note:

1. add heat sink to help heat dissipation and increase reliability of convert operating at high ambient temperature
2. please refer derating curve while upgrade the operating temperature of converter

Application notice:

For modules with through-hole pins, they are intended for wave soldering assembly onto system boards; please do not subject such modules through reflow temperature profile.

Recommended layout refer below



| Pin# | Function |
|------|----------|
| 1 | Vin+ |
| 2 | Vin- |
| 3 | ON/OFF |
| 4 | Trim |
| 5 | Vout- |
| 6 | Vout+ |

Part Numbering System

| S | 24 | S | P | 050 | 08 | P | D | F | A |
|-------------|---------------|------------------|-------------------|----------------|----------------|------------------------------|-------------------------------------|-----------------------------|--|
| Form factor | Input voltage | Number of output | Product series | Output voltage | Output current | On/off logic | Pin length | | Option Code |
| S | 24 - 9~36V | S - Single | P - Series Number | 050 - 5V | 08 - 8A | N - Negative P - Positive | D - 0.24" T - 0.22" R - 0.17" | F - RoHS 6/6 (Lead Free) | A - Standard. (with metal case) H - With heat sink |

CONTACT: www.deltaww.com/dcdc

Email: dcdc@deltaww.com

USA:

Telephone:
East Coast: 978-656-3993
West Coast: 510-668-5100
Fax: (978) 656 3964

Europe:

Phone: +31-20-655-0967
Fax: +31-20-655-0999

Asia & the rest of world:

Telephone: +886 3 4526107
ext 6220~6226
Fax: +886 3 4513485

WARRANTY

Delta offers a two (2) years limited warranty. Complete warranty information is listed on our web site or is available upon request from Delta.

Information furnished by Delta is believed to be accurate and reliable. However, no responsibility is assumed by Delta for its use, nor for any infringements of patents or other rights of third parties, which may result from its use. No license is granted by implication or otherwise under any patent or patent rights of Delta. Delta reserves the right to revise these specifications at any time, without notice.