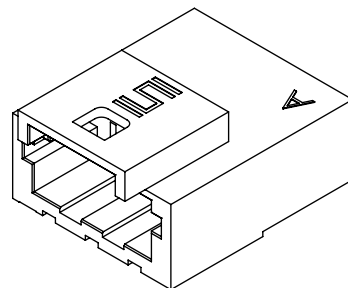
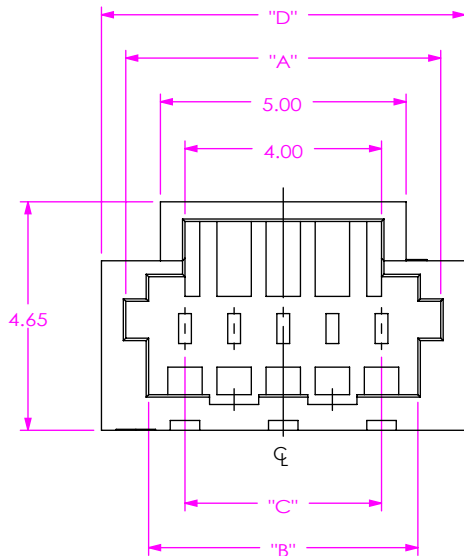


DO NOT
SCALE FROM
THIS PRINT



IST1-XX

No OF POSITIONS
-02 THRU -10
*-11 THRU *-20

* = NOT TOOLED

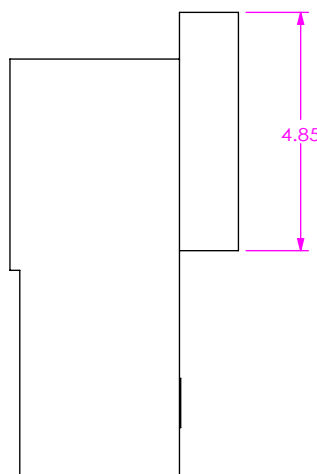
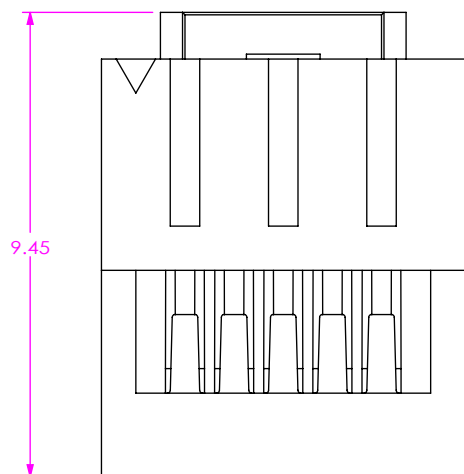
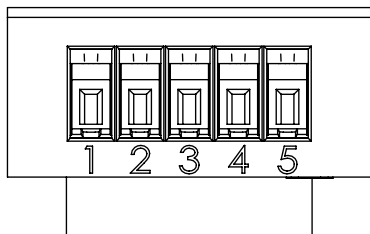


FIG 1
IST1-05 SHOWN

TABLE 1

No OF POS	"A"	"B"	"C"	"D"
-02***	3.41	2.48	1.00	4.40
-03***	4.41	3.48	2.00	5.40
-04***	5.41	4.48	3.00	6.40
-05	6.41	5.48	4.00	7.40
-06	7.41	6.48	5.00	8.40
-07	8.41	7.48	6.00	9.40
-08	9.41	8.48	7.00	10.40
-09	10.41	9.48	8.00	11.40
-10	11.41	10.48	9.00	12.40
*-11	12.41	11.48	10.00	13.40
*-12	13.41	12.48	11.00	14.40
*-13	14.41	13.48	12.00	15.40
*-14	15.41	14.48	13.00	16.40
*-15	16.41	15.48	14.00	17.40
*-16	17.41	16.48	15.00	18.40
*-17	18.41	17.48	16.00	19.40
*-18	19.41	18.48	17.00	20.40
*-19	20.41	19.48	18.00	21.40
*-20	21.41	20.48	19.00	22.40

(* = NOT TOOLED) (***) = SEE FIG 2)



NOTES:

1. PARTS TO BE BULK PACKAGED.

UNLESS OTHERWISE SPECIFIED,
DIMENSIONS ARE IN MILLIMETERS.

PROPRIETARY NOTE
THIS DOCUMENT CONTAINS CONFIDENTIAL AND PROPRIETARY INFORMATION AND ALL DESIGN, MANUFACTURING, REPRODUCTION, USE, PATENT RIGHTS AND SALES RIGHTS ARE EXPRESSLY RESERVED BY SAMTEC, INC. THIS DOCUMENT SHALL NOT BE DISCLOSED, IN WHOLE OR PART, TO ANY UNAUTHORIZED PERSON OR ENTITY NOR REPRODUCED, TRANSFERRED OR INCORPORATED IN ANY OTHER PROJECT IN ANY MANNER WITHOUT THE EXPRESS WRITTEN CONSENT OF SAMTEC, INC.



520 PARK EAST BLVD., NEW ALBANY, IN 47150
PHONE: 812-944-6733 FAX: 812-948-5047
e-Mail: info@SAMTEC.com code 55322

MATERIAL: DO NOT SCALE DRAWING SHEET SCALE: 2:1
NYLON 66
COLOR: LIGHT GREEN

DESCRIPTION:
1.00 MM PITCH IST1 BODY

DWG. NO.
IST1-XX

BY: JOE Z 02/28/2018 SHEET 1 OF 2

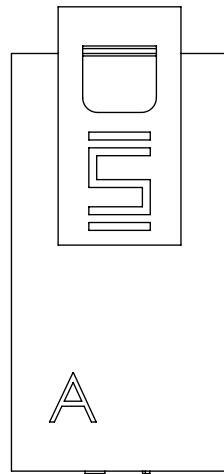
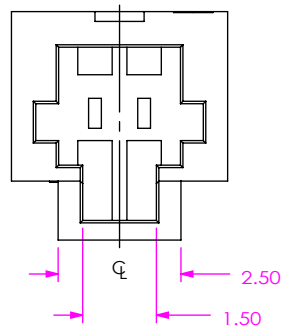


FIG 2
 IST1-02 SHOWN
 (DIFFERENT AS SHOWN, OTHERWISE SAME AS FIG 1)
 (FOR POSITIONS -02 THRU -04)

PROPRIETARY NOTE
 * THIS DOCUMENT CONTAINS CONFIDENTIAL AND PROPRIETARY INFORMATION AND ALL DESIGN, MANUFACTURING, REPRODUCTION, USE, PATENT RIGHTS AND SALES RIGHTS ARE EXPRESSLY RESERVED BY SAMTEC, INC. THIS DOCUMENT SHALL NOT BE DISCLOSED, IN WHOLE OR PART, TO ANY UNAUTHORIZED PERSON OR ENTITY NOR REPRODUCED, TRANSFERRED OR INCORPORATED IN ANY OTHER PROJECT IN ANY MANNER WITHOUT THE EXPRESS WRITTEN CONSENT OF SAMTEC, INC. *

samtec
 520 PARK EAST BLVD, NEW ALBANY, IN 47150
 PHONE: 812-944-6733 FAX: 812-948-5047
 e-Mail: info@SAMTEC.com code 55322

SHEET SCALE: 2:1

DESCRIPTION:
 1.00 MM PITCH IST1 BODY

DWG. NO.
IST1-XX

BY: JOE Z 02/28/2018 SHEET 2 OF 2