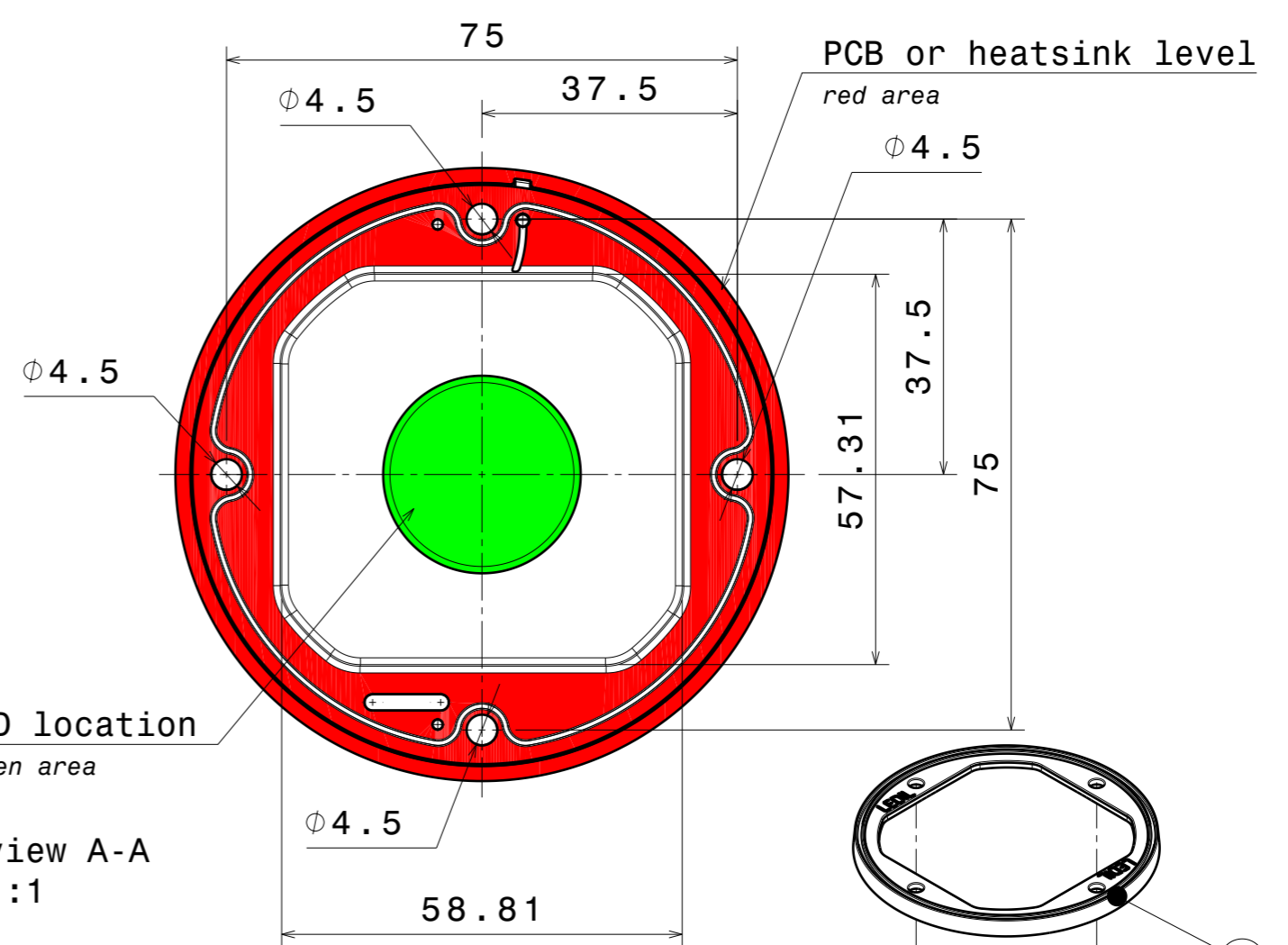


LED location
green area

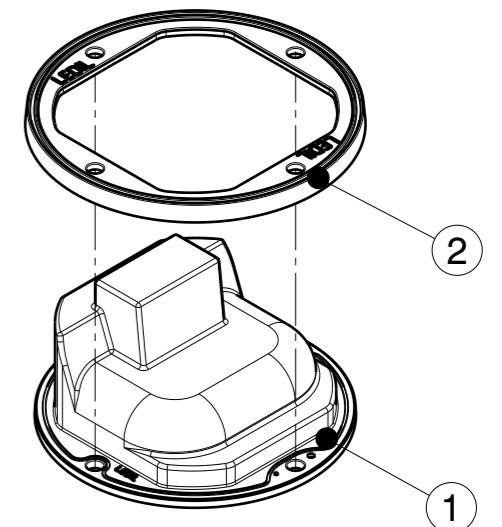
Section view A-A
Scale: 1:1



PCB or heatsink level
red area

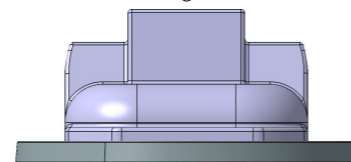
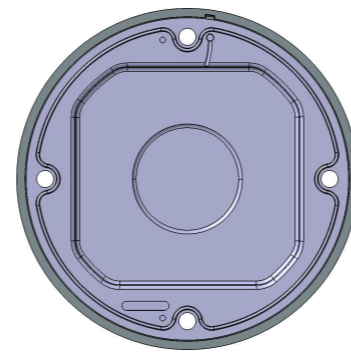
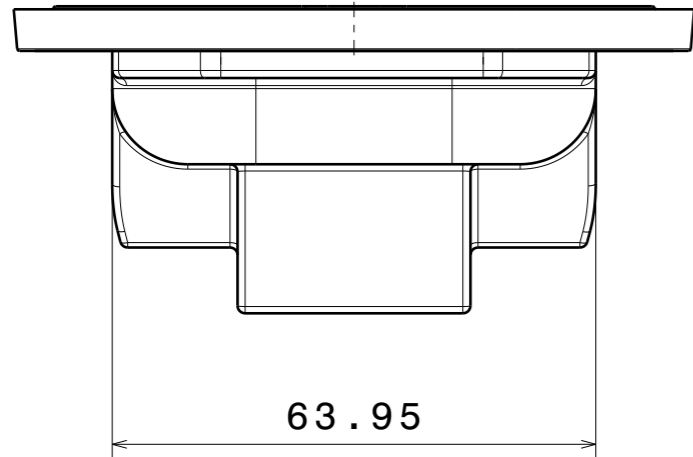
LED location
green area

Section view A-A
Scale: 1:1



Isometric view
Scale: 1:2

Light pattern direction



Code table:

PRODUCT	FRAME	FRAME COLOR
FN16441_STELLA-G2-T3	F13322_STELLA-FRAME	black
FN16479_STELLA-G2-T3	F14252_STELLA-FRAME-WHT	white

COMPONENTS

STELLA-G2-T3-Mechanicalmodel_Assembly

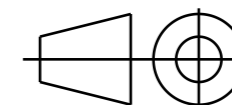
INDEX	PART	TYPE	MATERIAL	COLOR / COATING
1	F16440_STELLA-G2-T3_Mechanicalmodel	LENS	Silicone	CLEAR
2	See Code Table	FRAME	Plastic	See code table

MECHANICAL DRAWING

PRODUCT
See Code Table

Plastic moulding general tolerances according to DIN 16901-130 and applies if not otherwise shown in the drawing. Silicone moulding general tolerances according to ISO 3302-1 Class M3 and applies if not otherwise shown in the drawing.

FIRST ANGLE PROJECTION:



LEDiL®

This drawing is the property of LEDiL Oy. It may not be copied or otherwise distributed without prior written permission from LEDiL Oy.

SCALE 1:1

WEIGHT 53,38g

A3 SHEET 1/2

Notes

- PCB or heatsink level.
- LED location.
- Ensure LED fitting from a product specific 3D model available from www.ledil.com.
- For more details about installation please see LEDiL Installation Guide on www.ledil.com

4

3

2

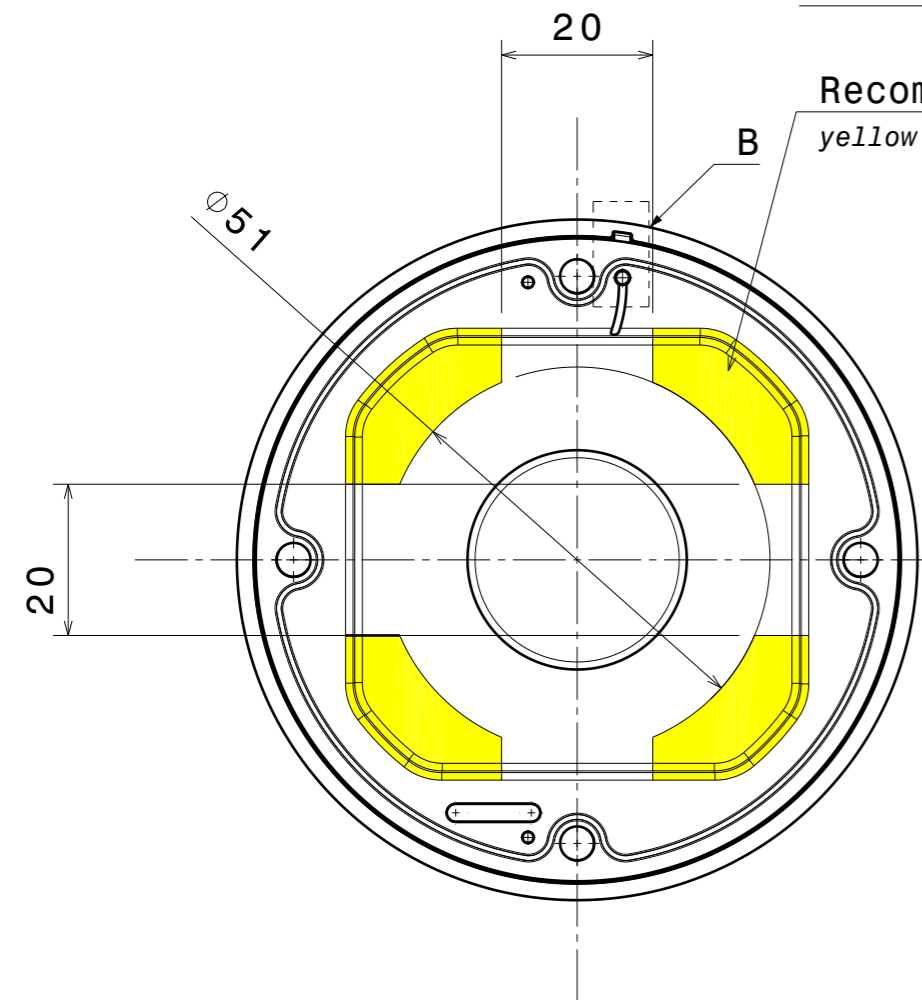
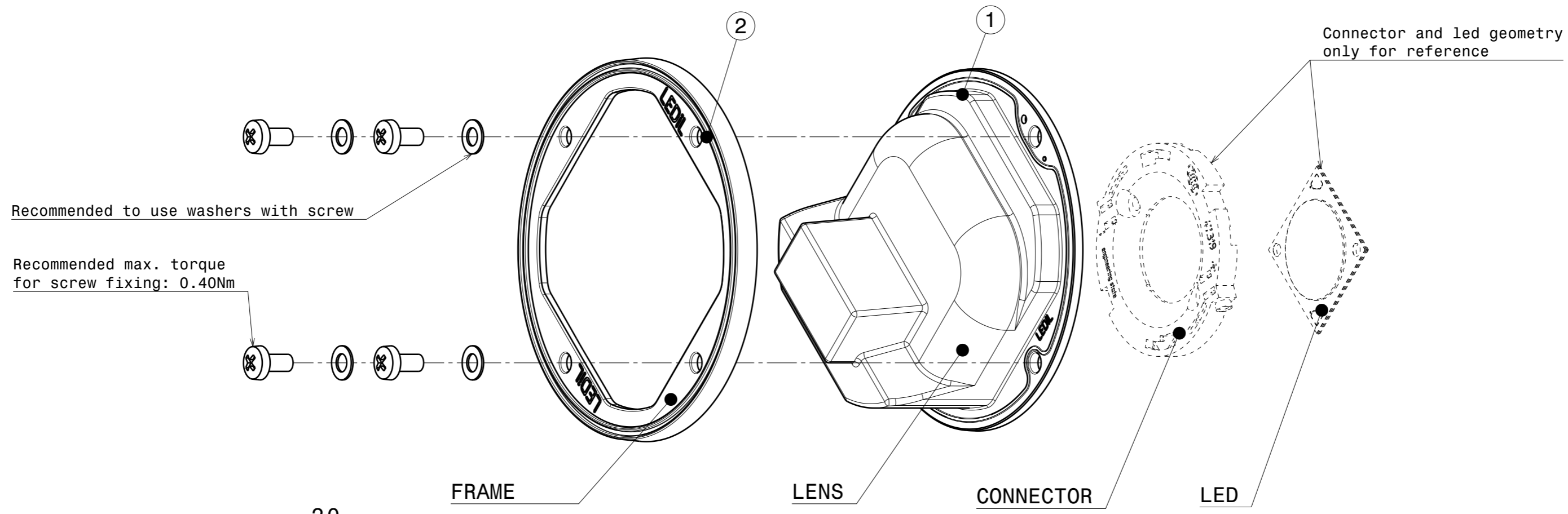
1

4

3

2

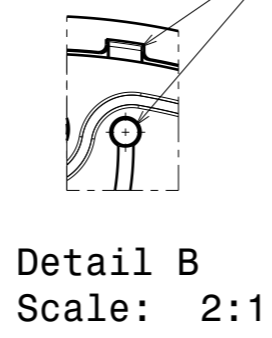
1



Recommended inlet area for wiring
yellow areas

Check suitability and design requirements with each connector

Channels in LENS and FRAME must be aligned to enable option for venting



Code Table:

PRODUCT	FRAME	COLOR
FN16441_STELLA-G2-T3	F13322_STELLA-FRAME	black
FN16479_STELLA-G2-T3	F14252_STELLA-FRAME-WHT	white

COMPONENTS

STELLA-G2-T3-Mechanicalmodel_Assembly

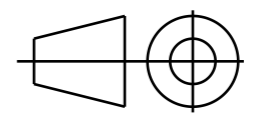
INDEX	PART	TYPE	MATERIAL	COLOR / COATING
1	F16440_STELLA-G2-T3_Mechanicalmodel	LENS	Silicone	CLEAR
2	See Code Table	FRAME	Plastic	See code table

MECHANICAL DRAWING

PRODUCT See Code Table

Plastic moulding general tolerances according to DIN 16901-130 and applies if not otherwise shown in the drawing. Silicone moulding general tolerances according to ISO 3302-1 Class M3 and applies if not otherwise shown in the drawing.

FIRST ANGLE PROJECTION:



LEDiL®

This drawing is the property of LEDiL Oy. It may not be copied or otherwise distributed without prior written permission from LEDiL Oy.

SCALE	1:1	WEIGHT	53,38g	A3	SHEET 2/2
-------	-----	--------	--------	----	-----------

Notes

Ensure LED fitting from a product specific 3D model available from www.ledil.com.
For more details about installation please see LEDiL Installation Guide on www.ledil.com