

CABLING

<TIPS>

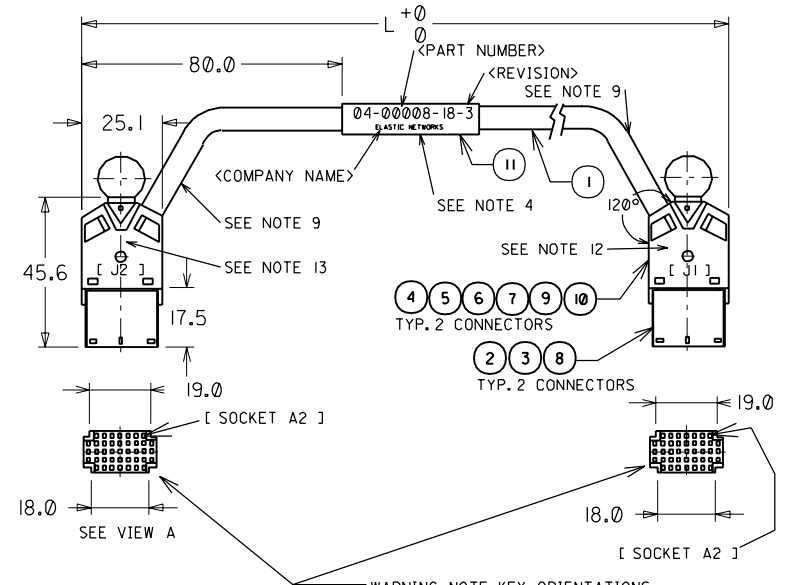
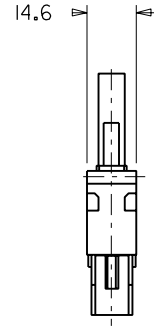
FROM CONN	FROM PIN NO.	WITH PAIR NO.	WITH WIRE COLOR	TO CONN	TO PIN NO.
J1	A2	T1	WHT/BLU	J2	A2
	D2	T2	WHT/ORG		D2
	A3	T3	WHT/GRN		A3
	D3	T4	WHT/BRN		D3
	A4	T5	WHT/SLT		A4
	D4	T6	RED/BLU		D4
	A6	T7	RED/ORG		A6
	D6	T8	RED/GRN		D6
	A7	T9	RED/BRN		A7
	D7	T10	RED/SLT		D7
	A8	T11	BLK/BLU		A8
	D8	T12	BLK/ORG		D8

<RINGS>

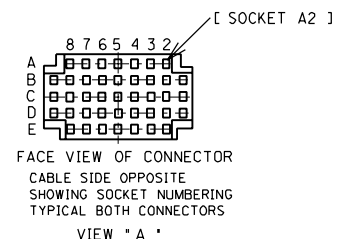
FROM CONN	FROM PIN NO.	WITH PAIR NO.	WITH WIRE COLOR	TO CONN	TO PIN NO.
J1	B2	R1	BLU/WHT	T2	B2
	E2	R2	ORG/WHT		E2
	B3	R3	GRN/WHT		B3
	E3	R4	BRN/WHT		E3
	B4	R5	SLT/WHT		B4
	E4	R6	BLU/RED		E4
	B6	R7	ORG/RED		B6
	E6	R8	GRN/RED		E6
	B7	R9	BRN/RED		B7
	E7	R10	STL/RED		E7
	B8	R11	BLU/BLK		B8
	E8	R12	ORG/BLK		E8

NOTES:

- UNLESS OTHERWISE SPECIFIED ALL DIMENSION ARE IN MILLIMETERS.
2 DECIMAL PLACES +/-0.254 ; ANGLES +/- °
- TO CONVERT INCHES TO MILLIMETERS USE 1 INCH= 25.40 MILLIMETERS
- CONNECTOR FACE IS KEYED BY DIMENSIONS SHOWN.
- LOCATE PRODUCT ID LABEL APROX. AS SHOWN, CABLE PART NUMBER, REVISION AND COMPANY NAME SHALL BE PRINTED ON LABEL AS SHOWN.
- UNASSIGNED
- UNASSIGNED
- CABLE ASSEMBLY SHALL BE 100% TESTED FOR SHORTCUTS AND CONTINUITY.
- UNASSIGNED
- APPLY WRAP AROUND LABEL ITEM II IN LOCATIONS SHOWN WITH CONNECTOR DESIGNATIONS STAMPED ON THE RESPECTIVE LABELS.
- USE HAND CRIMP TOOL FOR AWG 22-26, MOLEX PART NUMBER 69-008-1051 OR E01UV.
- SEE SEPARATE BILL OF MATERIAL E-85362-003
- APPLY LABEL ITEM II IN LOCATION SHOWN WITH THE FOLLOWING STAMPED ON LABEL: " RIGHT SIDE : FILTER "
- APPLY LABEL ITEM IN LOCATION SHOWN WITH THE FOLLOWING STAMPED ON LABEL: " RIGHT SIDE: MODEM "



MAT. NUMBER	L = (mm)
85362-0001	450
85362-0003	3500



FACE VIEW OF CONNECTOR
CABLE SIDE OPPOSITE
SHOWING SOCKET NUMBERING
TYPICAL BOTH CONNECTORS
VIEW "A"

WARNING: NOTE KEY ORIENTATIONS
SEE NOTE 3

EC NO. MC2001-0035 DRWN: KNoller 00/07/27 CHK: MF // // APPR: FB // //	QUALITY SYMBOLS MAJOR = CRITICAL = C =	GENERAL TOLERANCES: (UNLESS SPECIFIED) mm INCH 4 PLACES ±0. ±. 3 PLACES ±0. ±. 2 PLACES ±0. ±. 1 PLACE ±0. ±. ANGULAR: ± 1/2 °	SCALE : DRAWN BY & DATE DONDREJ 00/06/09 CHECKED BY & DATE KN // // APPROVED BY & DATE FB // //	DESIGN UNITS <input checked="" type="checkbox"/> mm <input type="checkbox"/> INCH	THIRD ANGLE PROJECTION 	DIMENSIONS: <input type="checkbox"/> mm <input type="checkbox"/> INCH <input checked="" type="checkbox"/> mm ONLY	SHT	REV
						TITLE: ASSY. CABLE. 5x7 ISU 2.5 TO 5x7 ISU 2.5 OMNIGRID		REVISE ON CAD ONLY
CAD FILENAME		MATERIAL NO. SEE CHART		DRAWING NO. SD-85362-001		SHEET NO. 1 OF 1		
DRAFT WHERE APPLICABLE MUST REMAIN WITHIN DIMENSIONS						THIS DRAWING CONTAINS INFORMATION THAT IS PROPRIETARY TO MOLEX INCORPORATED AND SHOULD NOT BE USED WITHOUT WRITTEN PERMISSION.		