



Product / Process Change Notification PCN

[10591657]

To: All active Customers
From: Jim DeVoogd james.devoogd@molex.com
cc:
Date April 26, 2013

Subject:

Tool addition to KK® Housing series 41695

Nature of Change:

Molex has built a new capacity tool to make KK® series 41695 series housings in the 2 thru 6 circuit sizes only. The parts from the new tool will look slightly different than parts from the current tool. See pictures attached.

Impact of change and risk analysis

There is no risk to the customers as form, fit, function will be unchanged.

Qualification reports: Qualification reports will be available after,
May 3, 2013

Sample availability: May 3, 2013

Identification and traceability for the introduction phase: No special marking on the packaging

Series / Family: 3.96mm (.156") pitch series 41695 KK housing

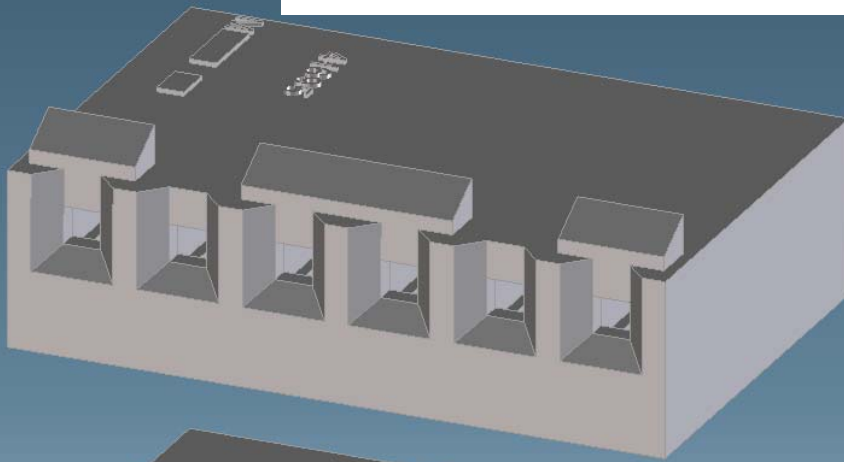
Part Numbers Affected:	9508020	9508041	9508063	9509053	416952005
	9508021	9508043	9509030	9509060	416952021
	9508023	9508050	9509033	9509063	416952022
	9508030	9508051	9509040	416950002	416952033
	9508031	9508053	9509043	416952001	
	9508033	9508060	9509044	416952002	
	9508040	9508061	9509050	416952004	

Product Description: KK® 396 Crimp Housing

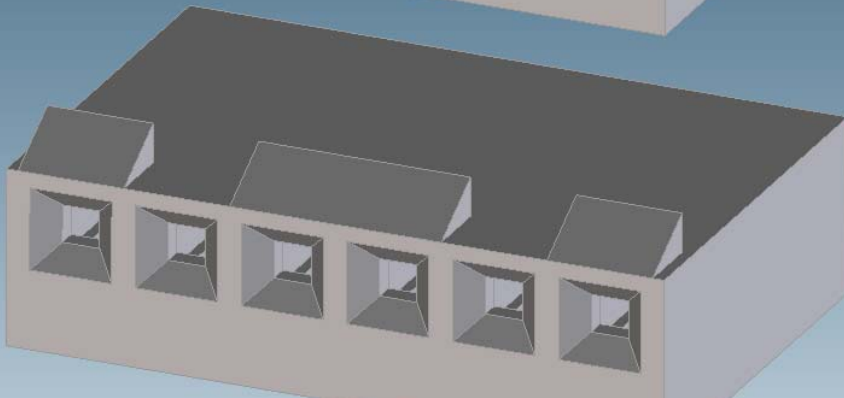
Product Image: See attached pictures of the minor changes to the parts.

Implementation date: May 10, 2013

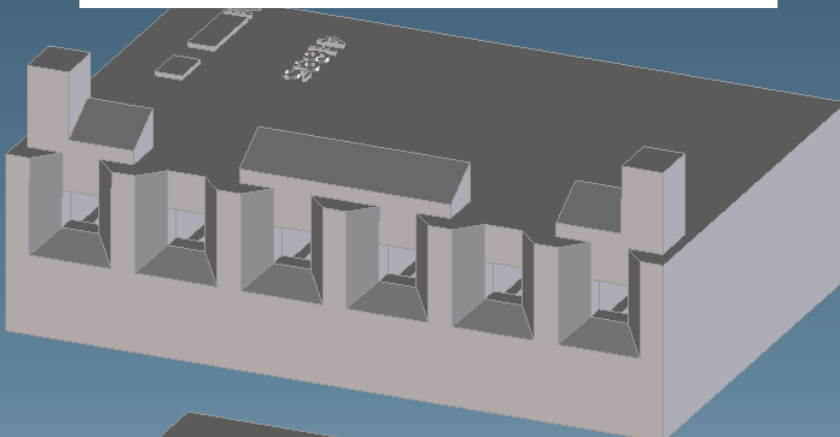
Print marking and mating face of parts from the new tool

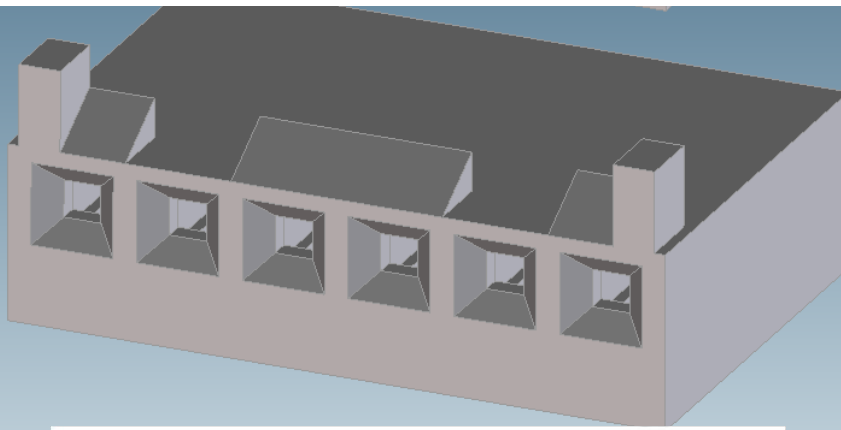


Mating face of parts from the current tool



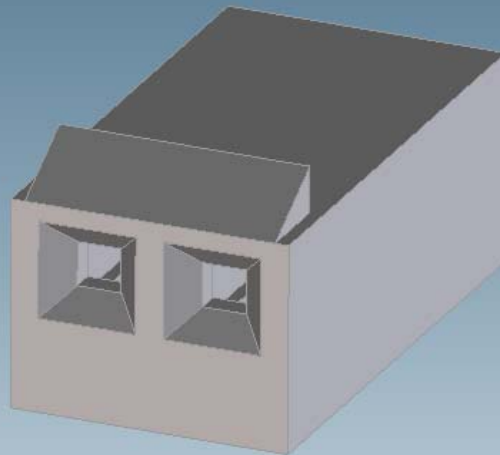
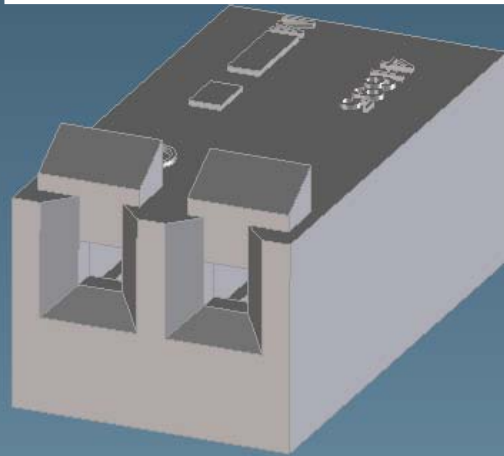
Ramps and polarization pegs on parts from the new tool





Ramps and polarization pegs on parts from the current tool

Two circuit ramps on parts from the new tool



Two circuit ramps on parts from the current tool