

# OUTSTANDING VISUAL PERFORMANCE

## DEPENDABLE ANALYSIS AND HIGH DEFINITION IMAGING

The Titan HD is a 1280 x 1024 resolution imager that allows thermographers to pinpoint overheating components and take accurate temperature measurements. Measures temperatures up to 1500 °C (2732 °F) targeting critical infrastructure and giving users dependable performance in extreme conditions. Provides up to 35 temperature analysis points to aid in data collection. Users can define isotherms, record annotations, enable alarming functions, and capture images at set intervals. Video streaming is available via USB Type-C or HDMI.

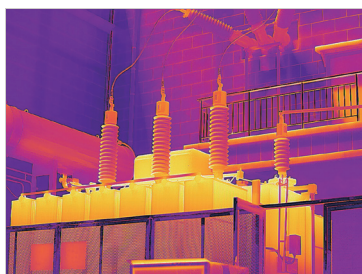


Titan HD



## BETTER VIEWING EXPERIENCE

The rotating viewfinder and tilting 5.5" (1920 x 1080) touch screen are designed to help thermographers image quickly and comfortably at any angle, including overhead or between narrow gaps. Prevents fatigue and is best for diagnosing temperature sensitive components in hard-to-reach areas.



## HI-RES THERMAL AND VISIBLE IMAGES

Provides 1.3MP, 1280 x 1024 high resolution thermal images. Captures visible images with 13 MP digital camera. Features manual adjustment for clear and precise focus. Features 4 image modes: picture-in-picture, visible, infrared and ICI Dual Vision for situational awareness and target location. 20 color palettes to enhance viewing and easily find hot spots. Save images to the provided MicroSD card.



## EASY TO USE

Hook points for straps ease wrist and arm tension and increase portability of the device. Use handheld or on a tripod. Perform analysis on the go. Utilize the Type-C or HDMI connectors to stream to an external device.



The Titan HD provides high temperature measuring up to 1500 °C (2732 °F). It is capable of collecting accurate radiometric data to within  $\pm 1$  °C ( $\pm 1.8$  °F) or  $\pm 1\%$  using up to 35 thermal analysis objects. It features a 13 MP visible camera. Manual focus provides clear 1280 x 1024 images to meet field and research requirements. Users can define isotherms, record annotations, and enable alarming functions. Stream media to an external device using the USB Type-C and HDMI interfaces.

## Features

- Wi-Fi and Bluetooth support
- Touchscreen, 5.5" color LCD
- Hot spot and cold spot tracing
- Up to 35 temperature analysis elements
- Customized color alarm isotherms
- High-temperature measuring
- Audible alarm settings
- Automatic/manual file naming
- Video streaming via USB Type-C or HDMI
- Predefined text annotation lists
- Voice annotation support

## Applications

- Electrical transmission lines
- Substation inspections
- Predictive maintenance
- Scientific research
- Critical equipment
- Petrochemical/Plant equipment
- Insulation inspections
- Air leakage/Energy Saving
- Building inspections
- Roof inspections
- HVAC/cold storage

## Accessories

- 256 GB Micro-SD card
- Flashlight (built-in)
- Microphone (built-in)
- 1/4"-20 tripod support (built-in)
- Neck strap
- Battery

## Specifications

- **Pixel Resolution:** 1280 x 1024
- **Accuracy:**  $\pm 1$  °C ( $\pm 1.8$  °F) or  $\pm 1\%$
- **Temperature Range:**
  - Standard: -20 °C to 150 °C (-4 °F to 302 °F);
  - Industrial: 150 °C to 800 °C (302 °F to 1472 °F)
  - Optional: 400 °C to 1500 °C (752 °F to 2732 °F)
- **Operation Range:** -20 °C to 50 °C (-4 °F to 131 °F)
- **Storage Range:** -40 °C to 70 °C (-40 °F to 158 °F)
- **Detector Array:** UFPA
- **Pixel Pitch:** 12  $\mu$ m
- **FOV:** 25° x 20°
- **IFOV:** 0.68 mrad
- **Focal Length:** 25 mm
- **Focus:** manual and automatic
- **Spectral Band:** 8  $\mu$ m to 14  $\mu$ m
- **Thermal Sensitivity (NETD):**
  - < (20 mK) 0.02 °C at 30 °C (86°F)
- **Frame Rate:** 30 Hz
- **Pixel Operability:** > 99 %
- **Shock/Vibration:** 25 G/2 G
- **Dimensions (without lens):**
  - 140 mm x 210 mm x 115 mm (L x W x H  $\pm 0.5$  mm)
  - (5.51" x 8.27" x 4.53" (L x W x H  $\pm 0.02$ "))
- **Weight (without lens):** 2000 g (4.41 lbs)
- **Battery:** Li-ion, rechargeable/replaceable
- **Operation Time:** 3 hours
- **Charging Time:** 3 hours
- **Interface:** USB Type-C, HDMI, SD Card
- **Video Format:** IRV or MP4 (without data)
- **Image Format:** IR JPG (with data) + visible JPG
- **Image Polarity:** 20 options
- **Image Modes:** IR, fusion (ICI Dual Vision), visible, picture-in-picture
- **Memory:** SD card (up to 2 TB)
- **Screen:** 5.5" color touch screen, 1920 x 1080
- **Viewfinder:** 0.39" OLED, 1920 x 1080
- **Brightness:** adjustable
- **Digital Camera:** 13 MP
- **Zoom:** 1x - 10x, continuous
- **Emissivity Correction:** 0.01 to 1.0
- **IP Rating:** IP54
- Audible and color alarm settings
- Laser support
- GPS support
- Text annotation lists
- Voice annotation support
- Wi-Fi and Bluetooth support