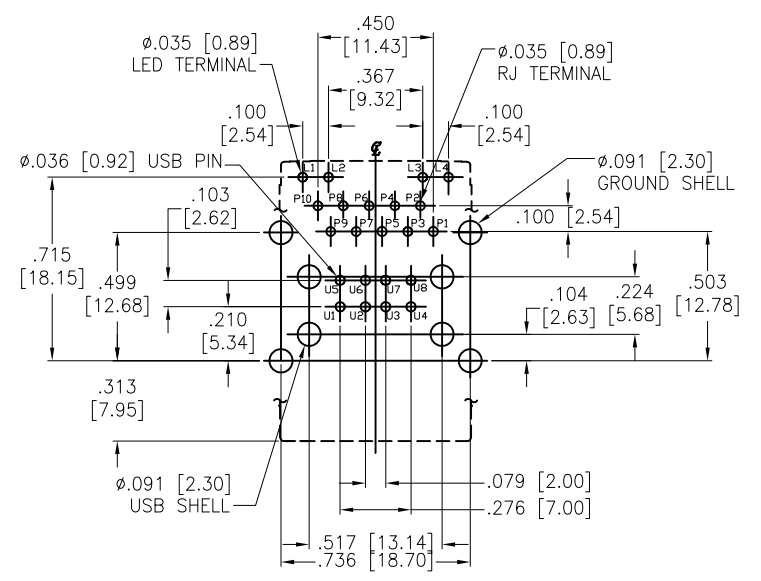
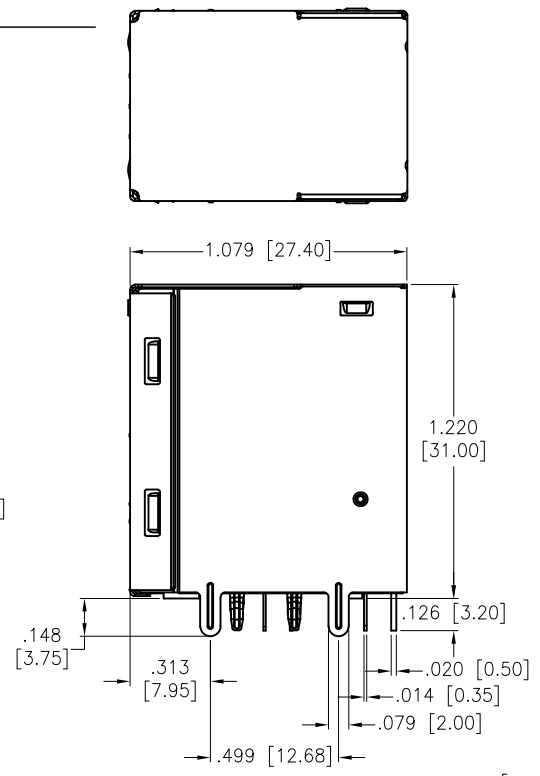
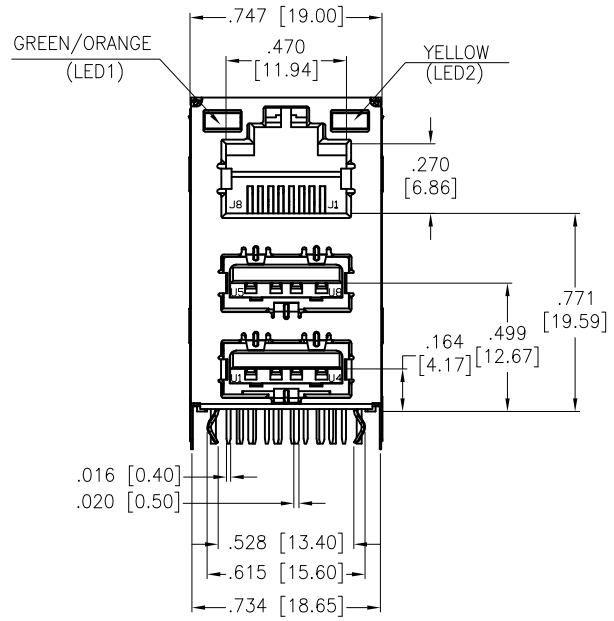
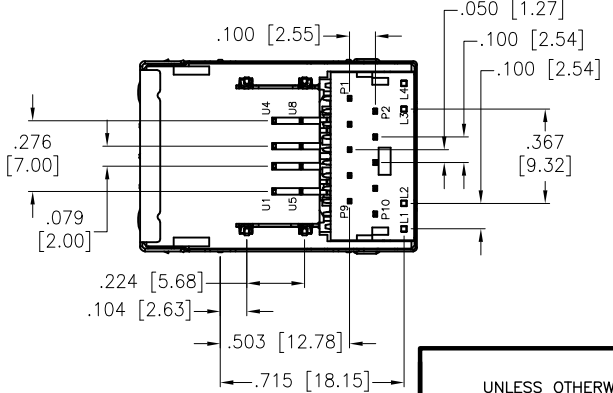


Rev	AWO #	Description	Date	Appr
-		RELEASED	12/12/17	

APPROVED: _____
DATE: _____ TITLE: _____



RECOMMENDED PCB LAYOUT



SPECIFICATIONS:
Material:
Insulator: Thermoplastic, rated UL 94V-0
Insulator color: Black
RJ Contacts: Phosphor Bronze
Solder Tail Terminal: Brass, Tin over Nickel plated
Shield: Stainless, Thickness 0.2mm, Pre-Soldering
RJ45 Contact Plating:
Gold over Nickel underplate on contact area,
Tin over Nickel underplate on solder tails
USB Contact Plating:
Gold over Nickel underplate on contact area,
Tin over Nickel underplate on tails
Electrical:
Insulation resistance: 500 Mohms min
Dielectric withstanding voltage: 1000 VAC for 1 minute
Temperature Rating:
Operating temperature: 0°C to +70°C
Environmental:
Lead free, RoHS compliant.



UNLESS OTHERWISE SPECIFIED ALL DIMENSIONS ARE INCHES [MM] TOLERANCES: EXCEPT AS NOTED		
INCHES	HOLES	
.X ± .10	Ø.X ± .10	
.XX ± .020	Ø.XX ± .015	
.XXX ± .015	Ø.XXX ± .010	
APPROVALS		DATE
DRAWN	AY	12/12/17
CHECKED	TY	12/12/17
APPROVED		

ADAM TECH INTERCONNECTS 909 Rahway Avenue, Union, NJ 07083
Phone: 908-687-5000 Fax: 908-687-5710

TITLE: **MODULAR JACK 8P8C & DUAL USB A 2.0 W/ LED1 GREEN/ORANGE, LED2 YELLOW**

SIZE	PART NO.	REV.
X	MTJ-DUSB-88JX1-FS-L29-M339Y	-
REF: S00101C	SCALE: NTS	SHEET 1 OF 2

6 5 4 3 2 1

D

D

C

C

B

B

A

A

6 5 4 3 2 1

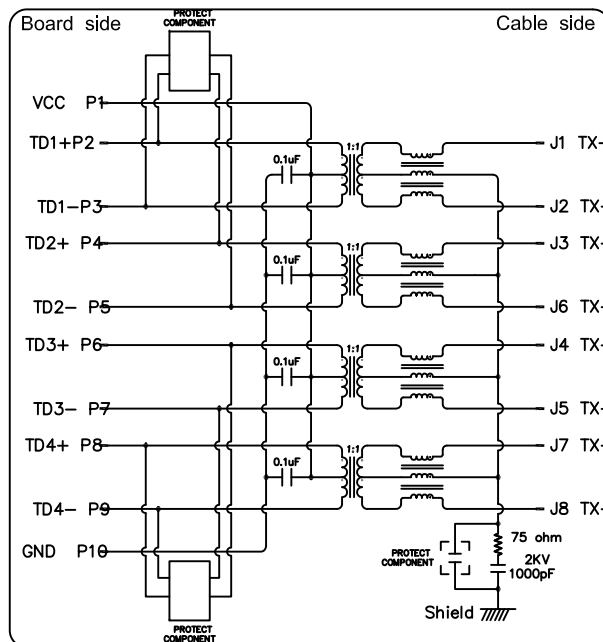
APPROVED: _____

DATE: _____ TITLE: _____

Rev	AWO #	Description	Date	Appr
-----	-------	-------------	------	------

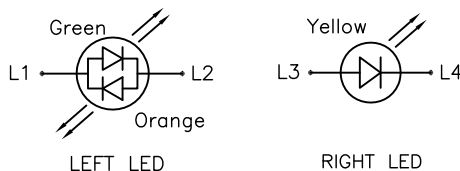
SEE SHT 1 OF 2 FOR REVISION

SCHEMATIC FOR RJ45:



ELECTRICAL CHARACTERISTICS :

- INSERTION LOSS :
 - 1~100 MHz -1.0dB MAX.
- RETURN LOSS(LOAD 100Ω) :
 - 1~30 MHz -18dB MIN
 - 30~60 MHz -16dB MIN
 - 60~80 MHz -12dB MIN
 - 80~100 MHz -10dB MIN
- COMMON MODE REJECTION
 - 1~100 MHz -30dB MIN
- CROSS TALK
 - 1~100 MHz -30dB MIN
- INDUCTANCE @ 100KHz, 0.1V, 8mA DC BIAS
 - (P2-P3),(P4-P5),(P6-P7),(P8-P9) : 350 uH MIN
- DCR
 - (J1-J2),(J3-J6),(J4-J5),(J7-J8) : 1.2 OHM MAX.
- HI-POT TEST
 - PCB SIDE TO CABLE SIDE : 1500VAC 60S OR 2250VDC 60S
- URNS RATION 100KHz
 - (P2-P3) : (J1-J2) = 1:1 ±%5
 - (P4-P5) : (J3-J6) = 1:1 ±%5
 - (P6-P7) : (J4-J5) = 1:1 ±%5
 - (P8-P9) : (J7-J8) = 1:1 ±%5
- ESD PROTECTION :
 - IEC 61000-4-2(ESD) 15KV(Air),8KV(Contact).
- SURGE PROTECTION :
 - IEC 61000-4-5(Lightning) (10/700uS)
 - Line to Line: 2KV Line to Ground: 6KV



UNLESS OTHERWISE SPECIFIED ALL DIMENSIONS ARE INCHES [MM] TOLERANCES: EXCEPT AS NOTED	
INCHES	HOLES
.X ± .10	Ø.X ± .10
.XX ± .020	Ø.XX ± .015
.XXX ± .015	Ø.XXX ± .010
APPROVALS	
DRAWN	AY 12/12/17
CHECKED	TY 12/12/17
APPROVED	

ADAM TECH
INTERCONNECTS

909 Rahway Avenue,
Union, NJ 07083
Phone: 908-687-5000
Fax: 908-687-5710

TITLE
MODULAR JACK 8P8C & DUAL USB A 2.0
W/ LED1 GREEN/ORANGE, LED2 YELLOW

SIZE	PART NO.	REV.
X	MTJ-DUSB-88JX1-FS-L29-M339Y	-
REF: S00101C	SCALE: NTS	SHEET 2 OF 2