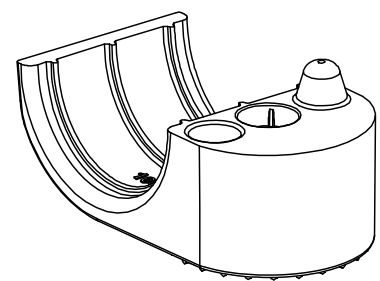
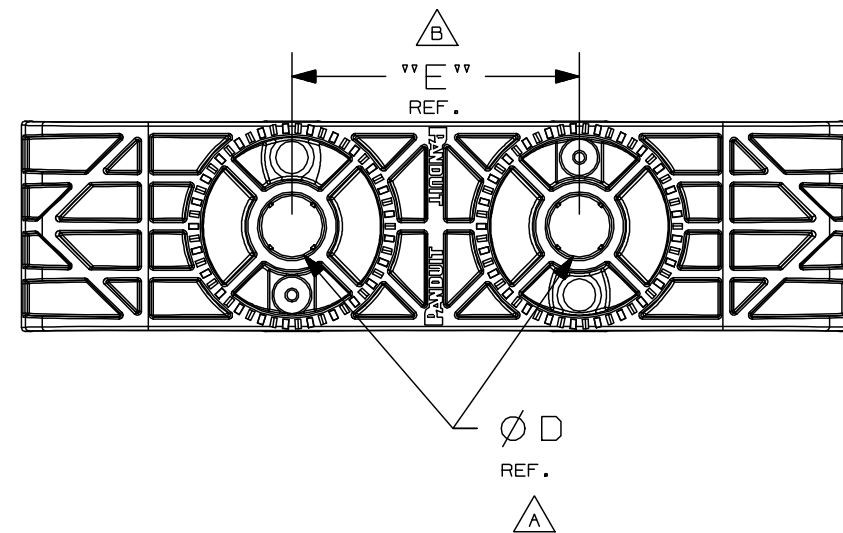
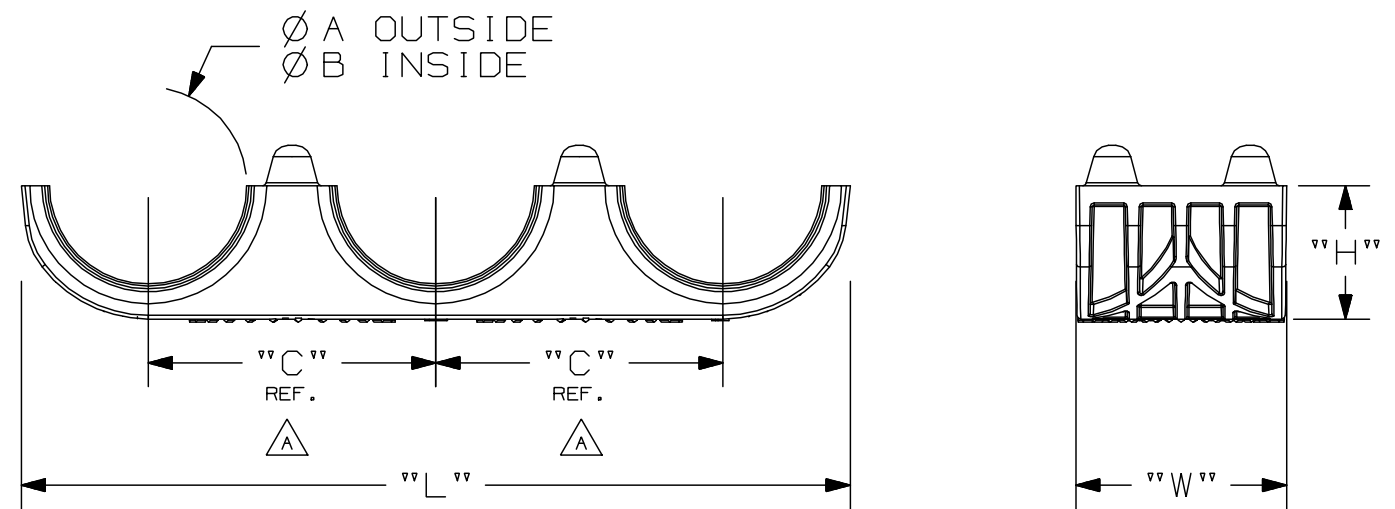


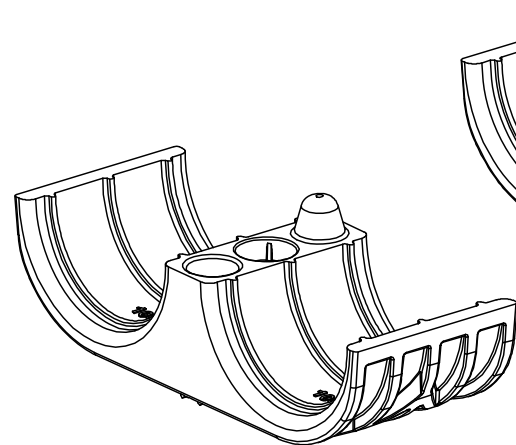
THIS COPY IS PROVIDED ON A RESTRICTED BASIS AND IS NOT TO BE USED IN ANY WAY DETRIMENTAL TO THE INTERESTS OF PANDUIT CORP.

PART NUMBER	"L"	"W"	"H"	Ø A	Ø B	C REF.	Ø D REF.	E REF.	WEIGHT grams/100pcs
CLC100X3S8**	4.3 [ 110 ]	1.1 [ 28 ]	0.7 [ 18 ]	1.11 [ 28.2 ]	1.03 [ 26.1 ]	1.5 [ 38 ]	0.32 [ 8 ]	1.5 (38)	1,748
CLC100X2S8**	2.8 [ 72 ]							N/A	1,071
CLC100X1S8**	1.9 [ 50 ]			N/A	896				
CLC88X3S8**	4.3 [ 110 ]			1.05 [ 26.7 ]	0.93 [ 23.7 ]			1.5 (38)	1,916
CLC88X2S8**	2.8 [ 72 ]							N/A	1,183
CLC88X1S8**	1.9 [ 50 ]			N/A	953				
CLC75X3S8**	4.3 [ 110 ]			0.94 [ 23.8 ]	0.83 [ 21.2 ]			1.5 (38)	2,114
CLC75X2S8**	2.8 [ 72 ]							N/A	1,315
CLC75X1S8**	1.9 [ 50 ]			N/A	1,018				
CLC62X3S8**	4.3 [ 110 ]			0.82 [ 20.7 ]	0.70 [ 17.7 ]			1.5 (38)	2,307
CLC62X2S8**	2.8 [ 72 ]	N/A	1,443						
CLC62X1S8**	1.9 [ 50 ]	N/A	1,083						

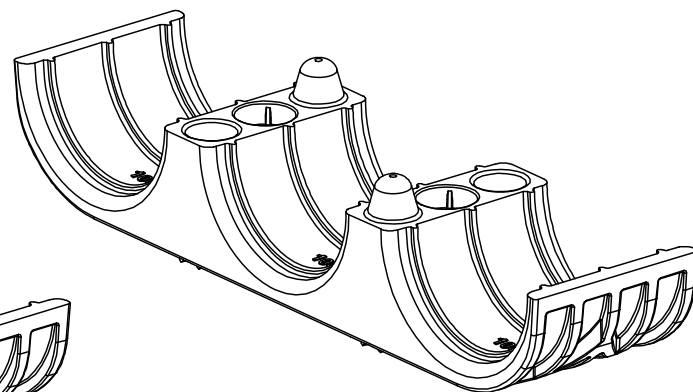
- NOTES:  
 1. MATERIAL: PA6.6 13% GF HEAT STABLE PER ASTM D4066, BLACK IN COLOR  
 2. FINISH: PLAIN  
 3. CONTINUOUS OPERATING TEMPERATURE: -40°F TO 275°F  
 4. QUANTITY OF ONE (1) PART IS AS SHOWN. QUANTITY OF TWO (2) PARTS NEEDED FOR A COMPLETE CLAMP.



CLC\*\*X1S8\*\*



CLC\*\*X2S8\*\*



CLC\*\*X3S8\*\*

REV	DATE	BY	CHK	APR	DESCRIPTION	ECN
03	3/3/22	DJSL	DAEI	ALP	C. UPDATED PART WEIGHTS	1004880/03
02	2/2/22	DJSL	DAEI	ALP	B. ADDED "E" DIMENSION	1004880/02
01	8/2/21	DJSL	DAEI	ALP	A. UPDATED DIMENSION AS REFERENCE	1004880/01
00	2/26/21	DJSL	LAH	ALP	DRAWING RELEASED	1004880/00

TITLE		CORRIGATED LOOM CLAMP	
ITEM REVISION NAME		CUSTOMER DRAWING	
DATASET FILE NAME		00875EAA/03	
UNLESS OTHERWISE SPECIFIED, DIMENSIONAL TOLERANCES ARE: IN [ mm ]		<b>PANDUIT</b> MATERIAL: PA 6.6 13% GLASS, HEAT STABLE DRAWING NUMBER: 00875EAA_DC	
.x ± .1 [ 2.54 ]      .xxx ± .005 [ .127 ] .xx ± .01 [ .25 ]      ANGLES ± 1°			
THIRD ANGLE PROJECTION		SCALE	
DRAWN BY		DATE	
DJSL		2/26/21	
CHK		SCALE	
LAH		FULL	
DRAWING NUMBER:		SHT 1 OF 1	
00875EAA_DC		B	