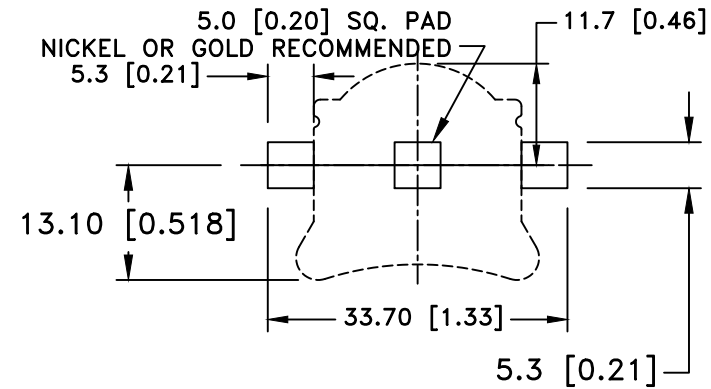
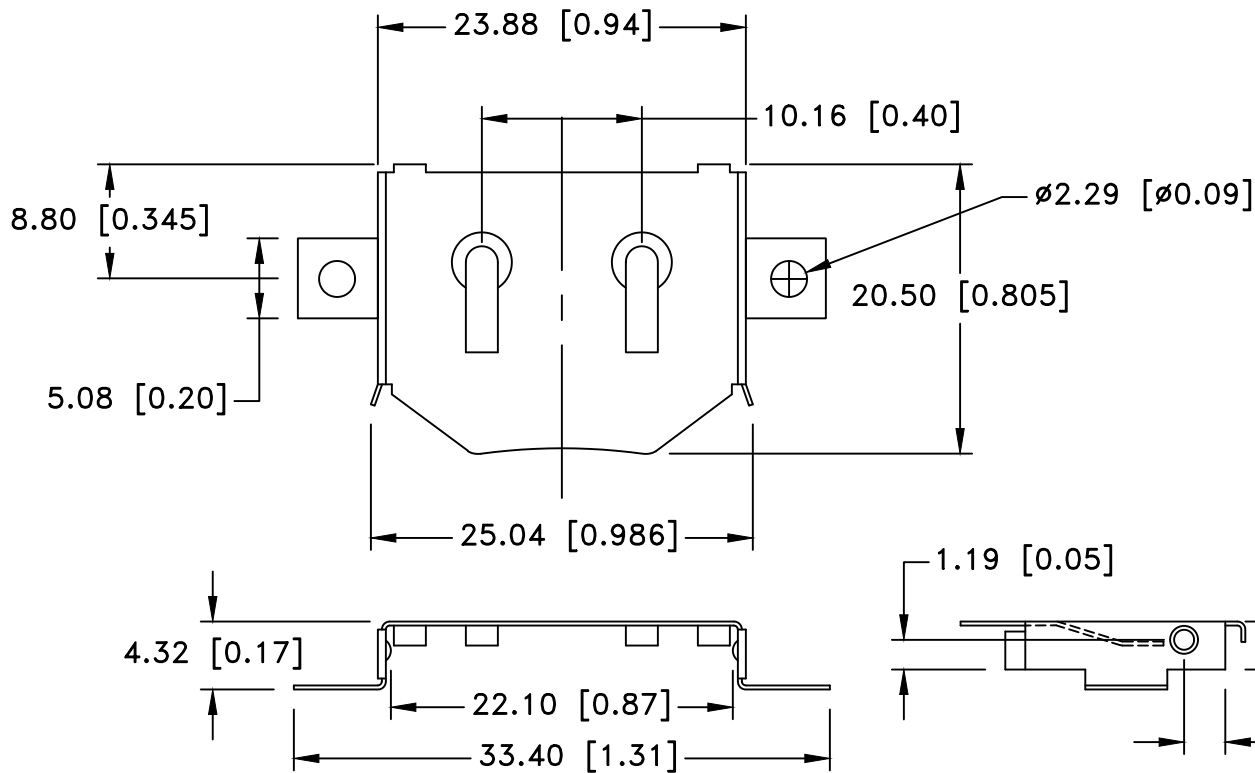


Date	SYM	REVISION RECORD	AUTH	DR.	CK.
06/16/17	C	ADDED INSULATOR PART NUMBER	T.B.	B.S.	
10/24/19	D	ADDED WEIGHT OF THE PART	T.B.	B.S.	




### PCB LAYOUT

### SPECIFICATION

- \* Contact : Phosphor Bronze C5191, Nickel Plated 80-150u thickness
- \* Vibration test: 10-50-10 hz swept in 60 seconds  
x,y,z direction: 1 hour each direction
- \* Result: no dislodgement of the cell or damage  
no discontinuity over 10 micro-seconds
- \* Shock test: half sine wave acceleration 150g.  
6 milli-seconds 3 shock pulses each direction per axis,  
total of 18 pulses
- \* Result: no evidence of physical damage
- \* ROHS COMPLIANT

Insulator Tray P/N BRX1-0003

Weight: 0.55g

Tolerance (Except as noted)	 <b>Memory Protection Devices, Inc</b> 200 Broad Hollow Road, Farmingdale, New York 11735		
decimal $\pm .5$ (.020)	Scale	Drawn By B.S.	
Fractional $\pm .8$ (.030)	Title CR2032 SURFACE MOUNT BATTERY RETAINER		
Angular $\pm 3^\circ$	Date 10/24/19	Drawing Number BRX1-2032-SM	
		Approved By T.B.	