

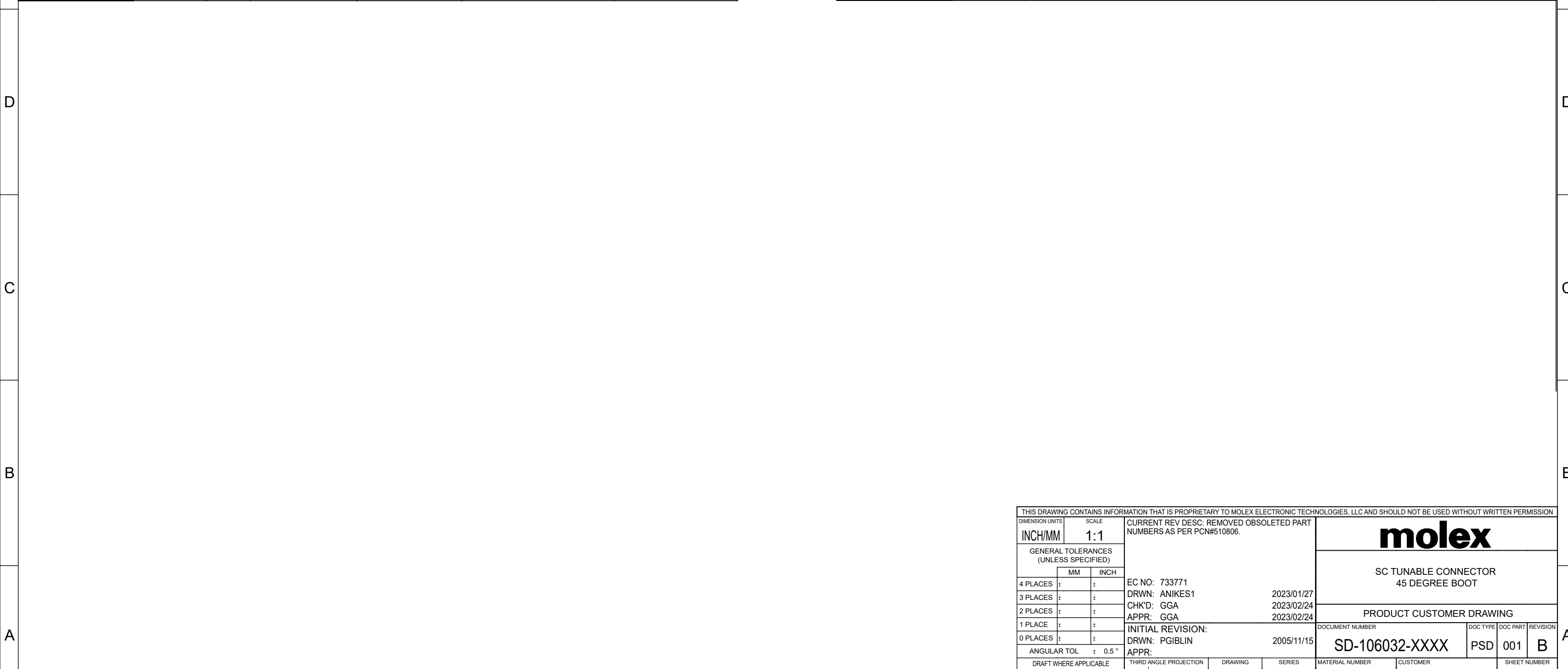
ISOMETRIC VIEW
SCALE 2:1

- NOTES:
 1. ALL DIMENSIONS ARE FOR REFERENCE ONLY.
 2. DUST CAP IS NOT SHOWN.

| | | | | | | | | | | | | |
|---|--|------------------------|--|--|--|-----------|--|--------------------------|--|-----------------------|----------|--------------|
| THIS DRAWING CONTAINS INFORMATION THAT IS PROPRIETARY TO MOLEX ELECTRONIC TECHNOLOGIES, LLC AND SHOULD NOT BE USED WITHOUT WRITTEN PERMISSION | | | | | | | | | | | | |
| DIMENSION UNITS INCH/MM | | SCALE 4:1 | | CURRENT REV DESC: REMOVED OBSOLETE PART NUMBERS AS PER PCN#510806. | | | | molex | | | | |
| GENERAL TOLERANCES (UNLESS SPECIFIED) | | | | EC NO: 733771 | | | | | | | | |
| | | | | DRWN: ANIKES1 2023/01/27 | | | | SC TUNABLE CONNECTOR | | | | |
| | | | | CHK'D: GGA 2023/02/24 | | | | 45 DEGREE BOOT | | | | |
| | | | | APPR: GGA 2023/02/24 | | | | PRODUCT CUSTOMER DRAWING | | | | |
| | | | | INITIAL REVISION: | | | | DOCUMENT NUMBER | | DOC TYPE | DOC PART | REVISION |
| | | | | DRWN: PGIBLIN 2005/11/15 | | | | SD-106032-XXXX | | PSD | 001 | B |
| | | | | APPR: IGUMIN 2005/11/29 | | | | MATERIAL NUMBER | | CUSTOMER | | SHEET NUMBER |
| ANGULAR TOL ± 0.5° | | THIRD ANGLE PROJECTION | | DRAWING | | SERIES | | SEE TABLE | | GENERAL MARKET 1 OF 2 | | |
| DRAFT WHERE APPLICABLE MUST REMAIN WITHIN DIMENSIONS | | THIRD ANGLE PROJECTION | | DRAWING | | SERIES | | MATERIAL NUMBER | | CUSTOMER | | |
| | | B-SIZE | | 106032 | | SEE TABLE | | GENERAL MARKET | | 1 OF 2 | | |

| 10 | 9 | 8 | 7 | 6 | | |
|---------------|----------------------------------|---------|------------|---------------|-------------------|-------------|
| CONNECTOR P/N | ∅D (μm) | ∅d (μm) | BOOT COLOR | HOUSING COLOR | CABLE ∅ (mm) | CABLE TYPE |
| 106032-2115 | 125.5 ⁺¹ ₀ | 1 | YELLOW | BLUE | 3 | SINGLE MODE |
| 106032-2125 | | | | | 2 AND 1.6 ZIPCORD | |
| 106032-2130 | | | | | 1.6 | |
| 106032-5115 | 126 ⁺¹ ₀ | 5 | BEIGE | BEIGE | 3 | MULTIMODE |
| 106032-5125 | | | | | 2 AND 1.6 ZIPCORD | |
| 106032-5135 | | | | | 1.6 | |
| 106032-0115 | 127 ⁺³ ₀ | 5 | BEIGE | BEIGE | 3 | MULTIMODE |
| 106032-0125 | | | | | 2 AND 1.6 ZIPCORD | |
| 106032-0130 | | | | | 1.6 | |

| 5 | 4 | 3 | 2 | 1 | | |
|---------------|----------------------------------|---------|------------|---------------|-------------------|-------------|
| CONNECTOR P/N | ∅D (μm) | ∅d (μm) | BOOT COLOR | HOUSING COLOR | CABLE ∅ (mm) | CABLE TYPE |
| 106032-3115 | 128 ⁺² ₀ | 3 | BEIGE | BEIGE | 3 | MULTIMODE |
| 106032-3125 | | | | | 2 AND 1.6 ZIPCORD | |
| 106032-3130 | | | | | 1.6 | |
| 106032-2145 | 125.5 ⁺¹ ₀ | 1 | WHITE | BLUE | 3 | SINGLE MODE |
| 106032-2165 | | | | | 2 AND 1.6 ZIPCORD | |
| 106032-2175 | | | | | 1.6 | |
| 106032-5195 | 126 ⁺¹ ₀ | 1 | WHITE | BLUE | 3 | SINGLE MODE |
| 106032-5165 | | | | | 2 AND 1.6 ZIPCORD | |
| 106032-5175 | | | | | 1.6 | |



| | | | | | | | | | |
|---|--|---------------------|------|--|--|-----------------|--|--|--|
| THIS DRAWING CONTAINS INFORMATION THAT IS PROPRIETARY TO MOLEX ELECTRONIC TECHNOLOGIES, LLC AND SHOULD NOT BE USED WITHOUT WRITTEN PERMISSION | | | | | | | | | |
| DIMENSION UNITS INCH/MM | | SCALE 1:1 | | CURRENT REV DESC: REMOVED OBSOLETE PART NUMBERS AS PER PCN#510806. | | | | molex | |
| GENERAL TOLERANCES (UNLESS SPECIFIED) | | | | EC NO: 733771 | | 2023/01/27 | | | |
| | | MM | INCH | DRWN: ANIKES1 | | 2023/02/24 | | SC TUNABLE CONNECTOR 45 DEGREE BOOT | |
| 4 PLACES ± | | | | CHK'D: GGA | | 2023/02/24 | | PRODUCT CUSTOMER DRAWING | |
| 3 PLACES ± | | | | APPR: GGA | | 2023/02/24 | | DOCUMENT NUMBER | |
| 2 PLACES ± | | | | INITIAL REVISION: | | 2005/11/15 | | SD-106032-XXXX | |
| 1 PLACE ± | | | | DRWN: PGIBLIN | | | | DOC TYPE DOC PART REVISION | |
| 0 PLACES ± | | | | APPR: | | | | PSD 001 B | |
| ANGULAR TOL ± 0.5° | | | | THIRD ANGLE PROJECTION | | DRAWING | | SHEET NUMBER | |
| DRAFT WHERE APPLICABLE MUST REMAIN WITHIN DIMENSIONS | | | | | | B-SIZE | | 2 OF 2 | |
| | | | | SERIES | | MATERIAL NUMBER | | CUSTOMER | |
| | | | | 106032 | | SEE TABLE | | GENERAL MARKET | |

| | | | | |
|-----------------|----|--------------|------------|----------|
| DOCUMENT STATUS | P1 | RELEASE DATE | 2023/02/24 | 12:55:34 |
|-----------------|----|--------------|------------|----------|