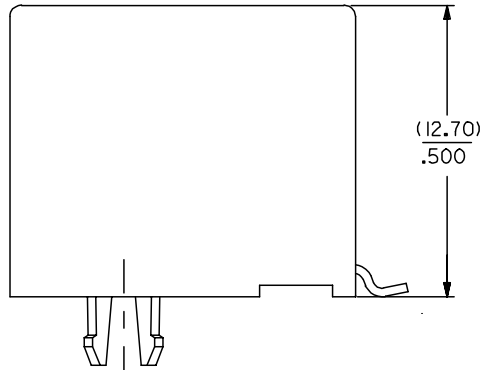


NOTES :

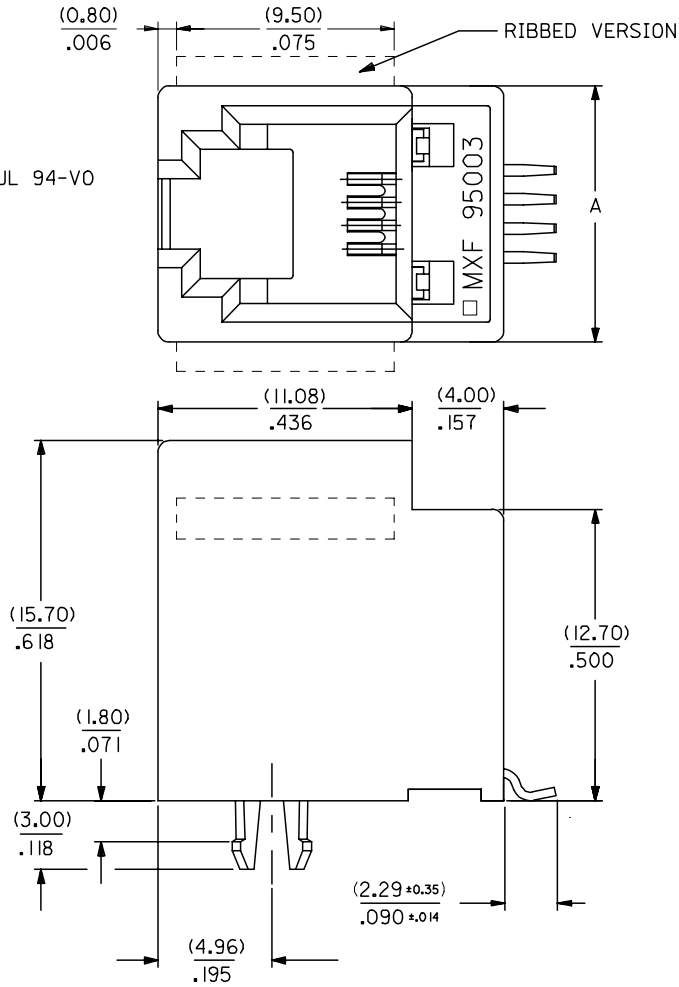
1- MATERIAL:

-HOUSING: POLYAMIDE 4/6 FIBER GLASS FILLED UL 94-V0
COLOR GREY OR BLACK.

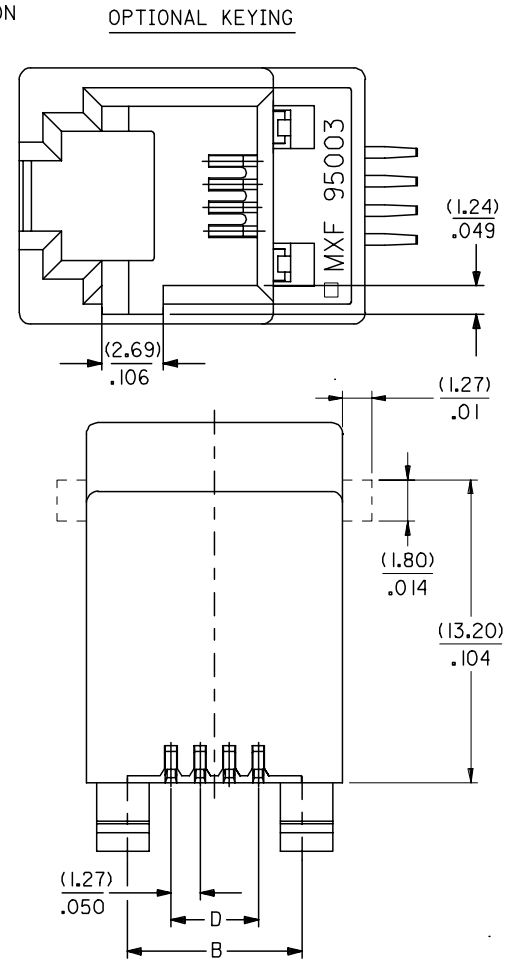
2- SEE OTHER NOTES SHEET 1.



SHORT VERSION



RIBBED VERSION



OPTIONAL KEYING

ENTER DESCRIPTION EC NO: MG2005-0119 DRAWN: KNOLLER 2004/10/06 CHK'D: CARABET 2004/10/06 APPR: KNOLLER 2004/10/11	QUALITY SYMBOLS ▽=0 ∇=0	GENERAL TOLERANCES (UNLESS SPECIFIED)		DIMENSION STYLE MM/IN	SCALE 5:1	DESIGN UNITS METRIC	THIRD ANGLE PROJECTION		
		4 PLACES ± --- ± ---	3 PLACES ± --- ± .006	2 PLACES ± 0.15 ± .010	1 PLACE ± 0.25 ± ---	ANGULAR ± .5 °	DRAWN BY DATE GP 95/05/16		
		DRAFT WHERE APPLICABLE MUST REMAIN WITHIN DIMENSIONS				CHECKED BY DATE			
		APPROVED BY DATE				TITLE LOW PROFILE T/E JACK (SMT VERSION)			
K	REV	MATERIAL NO. SEE SHT. 4, 5		DOCUMENT NO. SDA-95003-F		SHEET NO. 2 OF 6			
SIZE A3				THIS DRAWING CONTAINS INFORMATION THAT IS PROPRIETARY TO MOLEX INCORPORATED AND SHOULD NOT BE USED WITHOUT WRITTEN PERMISSION					

