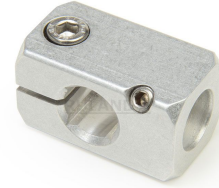
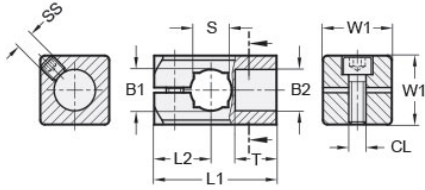




MT16/16-CC90-A

Ruland T-Connector Mini-Clamp, Thru Holes 16mmx16mm, Length 45.0mm, Aluminum




Description

Ruland MT16/16-CC90-A is a 90 degree connector with a thru hole for 16mm round tube, blind hole for 16mm round tube, and 45.0mm overall length. It is designed to fit on Ruland tubes and flange bolt bases that begin with MT16. MT16/16-CC90-A is aluminum and screws are 304 stainless steel for use in most industrial applications. This 90 degree connector clamp is commonly used to support tubes for mounting sensors, screens, reflectors, plexiglass machine guards, and other industrial components. The blind hole reduces complication in assembly and limits the possibility of a mistake being made by inserting a tube too far into the connector for it to function properly. The thru hole allows designers flexibility to reposition the clamp or tube as needed. MT15:16:20-ALK-M6-25 adjustable clamping lever can be used in place of standard clamp hardware for rapid repositioning of the tube or connector without the need for tools. MT16/16-CC90-A is manufactured by Otto Ganter, inventoried by Ruland, and RoHS3 compliant.

Product Specifications

Thru Hole 1 Diameter B1	16 mm	Thru Hole 2 Diameter B2	16 mm
Thru Hole Tolerance	+0.11/-0 mm	Body Length L1	45 mm
Edge To Center L2	20 mm	Screw To Edge LS	11 mm
Hole Depth T	16 mm	Width & Height W1	25 mm
Clamp Screw CL	M6	Set Screw SS	M6
Weight (lbs)	0.121800	Material Specification	Aluminum
Manufacturer	JW Winco/ Otto Ganter	UPC	634529231975
Country of Origin	Germany	Tariff Code	7609.00.0000
UNSPC	31162908		

Note 1 Performance ratings are for guidance only. The user must determine suitability for a particular application.

Prop 65  **WARNING** This product can expose you to the chemical Nickel (metallic), known to the State of California to cause cancer. For more information go to www.P65Warnings.ca.gov.